



# HAYES VILLAGE



---

A VIBRANT NEW COMMUNITY IN A HISTORIC LOCATION

---





**TURYAP**<sup>®</sup>  
UK

---

HAYES VILLAGE

---



## Say hello to Hayes Village

Imagine an idyllic location that's steeped in local heritage, with an evolving high street just a walk away and the bright lights of central London within easy reach. Imagine a light, contemporary apartment where the Grand Union Canal is on your doorstep and history is hidden in the walls. Imagine making Hayes Village your home.

We're proud to introduce a range of one, two and three-bedroom apartments in a buzzing new residential quarter that's

bursting with local history. An exciting development located in the iconic former Nestlé factory site, Hayes Village is surrounded by parklands and transport links, making it the perfect place for growing families and city commuters alike.

With easy access to local amenities, quick connections to Heathrow and a vibrant village-like feel at its heart, you could soon be soaking up everything this cosmopolitan community has to offer. Now, imagine that.

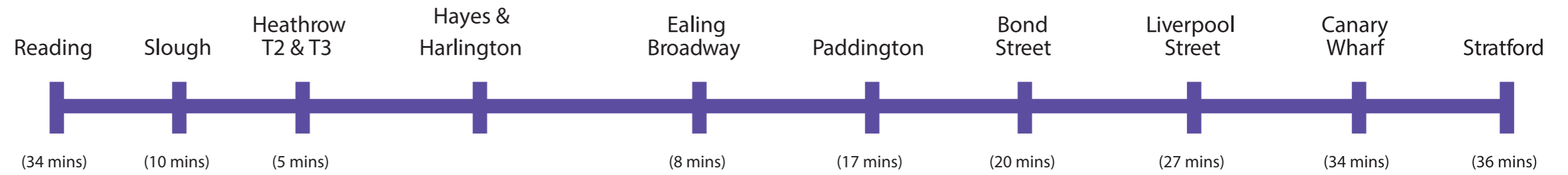




## Better connected than ever before

Whether you're looking to cut down your commute or escape to your favourite holiday destination more easily, Hayes Village provides quick links to both central London, Heathrow and further afield. Nestled in the Borough of Hillingdon, the

development is 13 miles west of central London, and just an 8 minute walk from Hayes & Harlington station (Zone 5). And once the Elizabeth line opens, Hayes will be better connected than ever before.



Elizabeth line travel times are approximate and only applicable once launched.  
Source: [www.crossrail.co.uk/route/](http://www.crossrail.co.uk/route/)



Hayes & Harlington station\*

\*Source Crossrail Limited. CGI shows architects' impression of Hayes & Harlington station following construction of new ticket hall and other planned improvements to the station. Date of completion TBC.

## An exciting new residential quarter in Hayes

A historic site re-envisioned, Hayes Village is an exciting new development of over 1,000 homes at the former site of the Nestlé factory. With expansive green space, including play areas, allotments and a running track planned for the site, these homes will suit young professionals, growing families and downsizers alike.

Original features from the Nestlé factory, including one of the listed art deco style buildings, will be lovingly woven into the fabric of Hayes Village.

You'll also benefit from fantastic transport connections into central London, outstanding schools in close proximity, and a vibrant local community.

Most homes also have their own outdoor space, in addition to the expansive communal gardens that all residents can enjoy, the expansive communal gardens, making living here just that little bit more luxurious. And should you need it, parking will also be available to some apartments.





## Airy interiors finished to perfection

Whether you choose a studio, one, two or three-bedroom apartment, you'll enjoy a home filled with light and style. Open-plan living areas feature floor-to-ceiling glazing allowing natural light to flood in, while kitchens are equipped with a full range of modern appliances, making cooking and entertaining a pleasure. Contemporary bathrooms

and en suites, complete with stylish fittings in white and chrome, are finished with attractive ceramic wall tiling.

Most homes have their own private balcony or terrace, providing an outdoor extension of your living space, allowing you to enjoy the calm environment of this new residential community.







## A welcoming and well-connected place to be

Hayes is a welcoming, well-connected corner of west London. With plenty of amenities within easy reach, including a high street, library, Asda Superstore, cinema and sports centre, you'll never be short of ways to spend your weekends or enjoy your evenings.

And, if education is a consideration, you'll find a range of schools for all ages, nearby. Hayes Park School, is just a short drive from Hayes Village.



Cranford Park

## Popular places to explore

If you're a fan of retail therapy, you'll find over 80 shops, as well as a range of restaurants, at Ealing Broadway – an eight-minute train ride away – and over 400 shops and services at Westfield White City – just 32 minutes by public transport. Better still, the Pavilion in Uxbridge and the traditional, open-air Southall Market – home to food, clothes, antiques and electronics' stalls – are also close by.

For those who love the great outdoors, what better way to spend the weekend than exploring the nature this neighbourhood has to offer at Cranford Park or Minet Country Park, both less than 10 minutes away. What's more, one of the last surviving country estates in London, Osterley Park and House, is within easy reach of the development.

Hayes' very own Beck Theatre, which hosts a range of the finest local, national and international companies and performers in its 600-seat venue, is less than a 10-minute drive from the development. What's more, nestled in Barra Hall Park, you'll find Barra Hall Open Air Theatre – which you can also reach in less than 10 minutes from Hayes Village.

If you're keen to venture a little further out, the wonderful riverside town of Windsor is just over 30 minutes away by train.

## Amenities

Most homes have private outdoor space

Landscaped communal gardens

Access to canal-side area

Planned retail space

Bike storage space

Car parking available\*

Running track

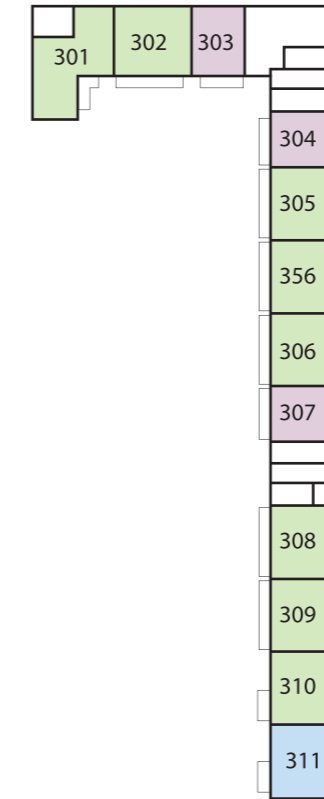
\* For selected homes at an additional cost.



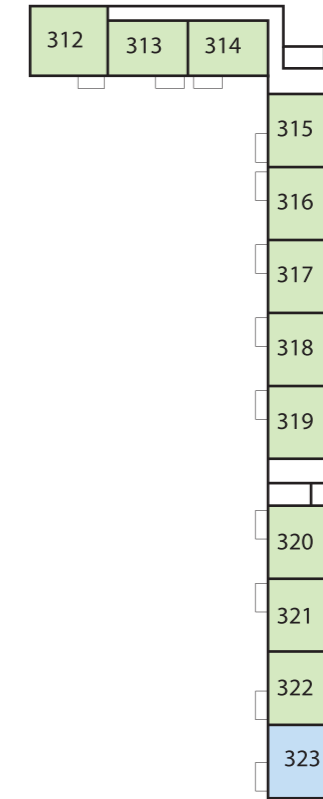
## Thornton Apartments

- One-bedroom apartments
- Two-bedroom apartments
- Three-bedroom apartments

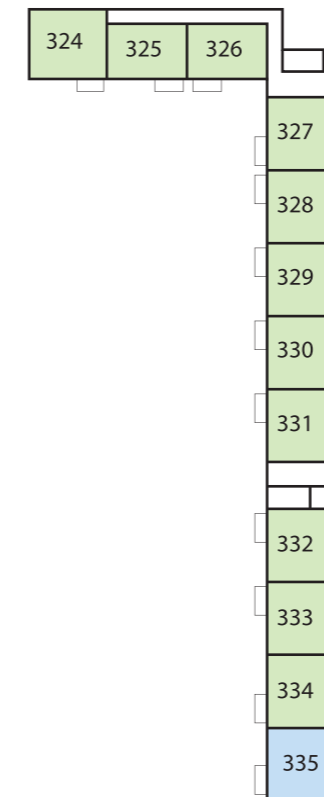
### Ground



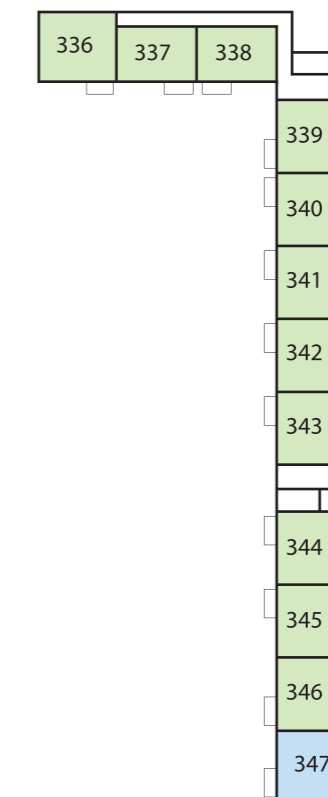
### Level 1



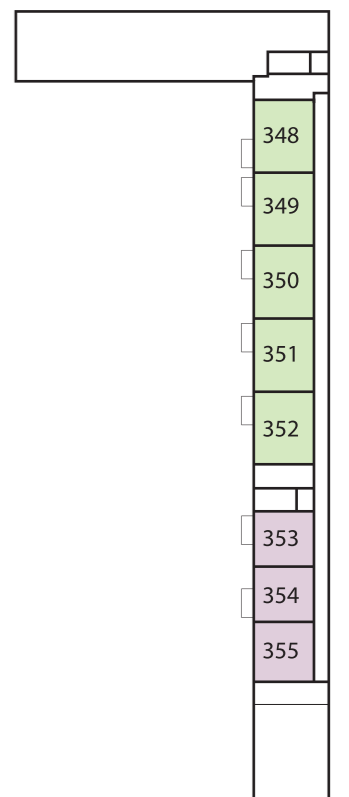
### Level 2



### Level 3

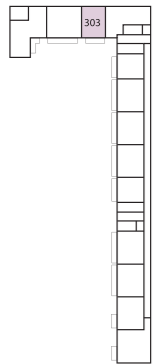
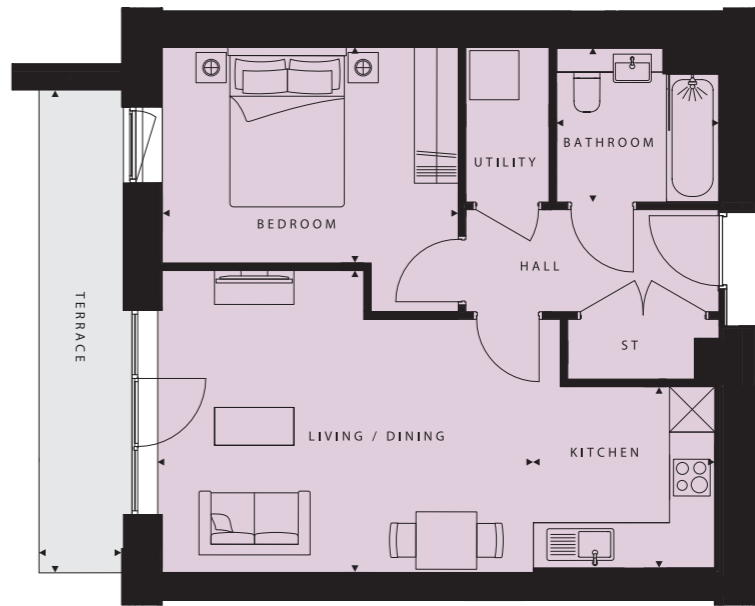
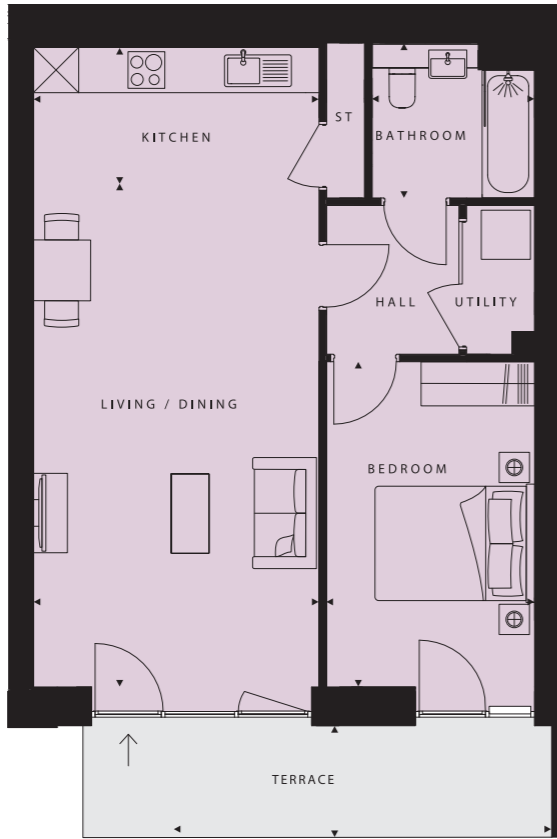
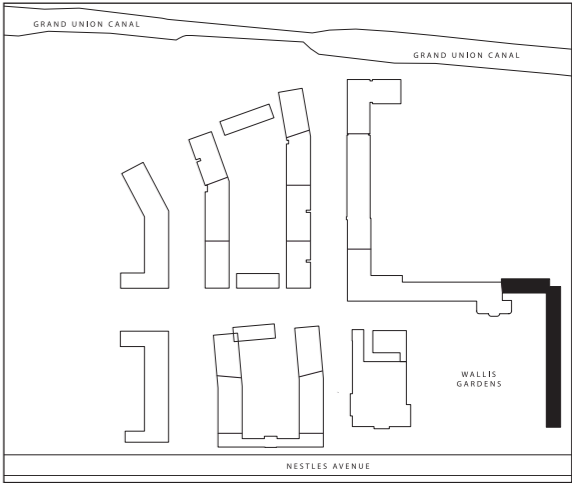
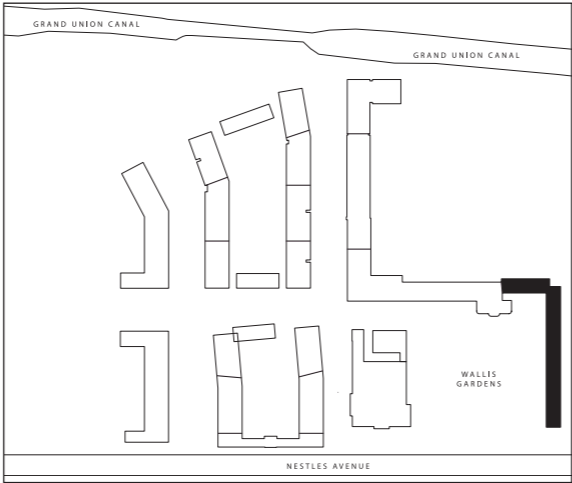


### Level 4



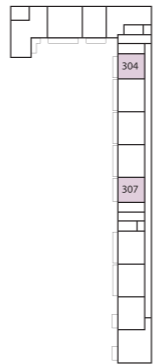
# Thornton Apartments

## 1 bedroom apartment



Ground Floor

<b>PLOT 303 (0)</b>
Living/Dining 21'8" x 12'3" (6661 x 3779mm)
Kitchen 12'3" x 5'9" (3779 x 1800mm)
Bedroom 14'1" x 9'1" (4303 x 2784mm)
Bathroom 7'1" x 6'9" (2150 x 2050mm)
<b>TOTAL AREA</b> 621.7 sq ft (57.8 sq m)
Terrace 16'4" x 4'9" (5000 x 1515mm)

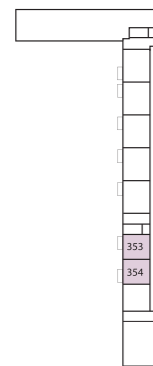
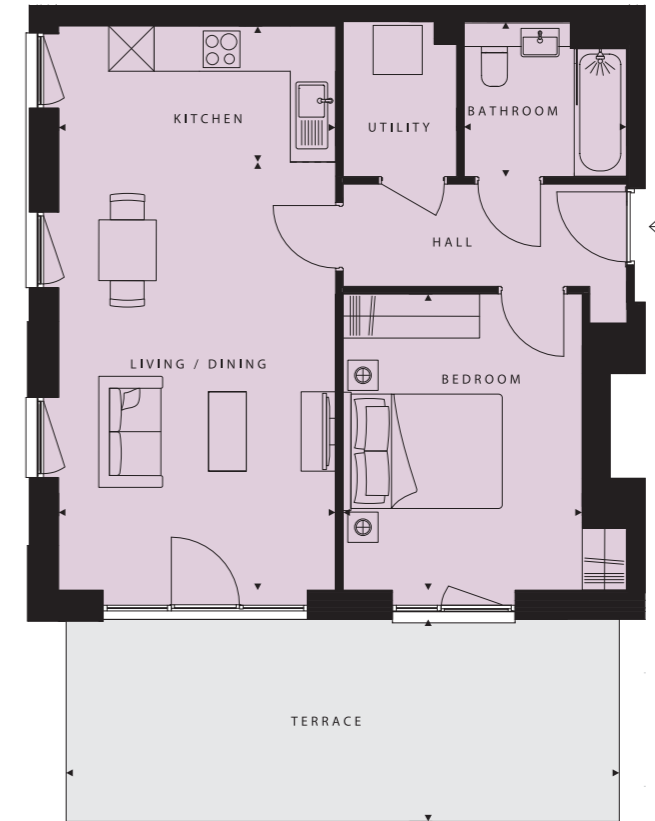
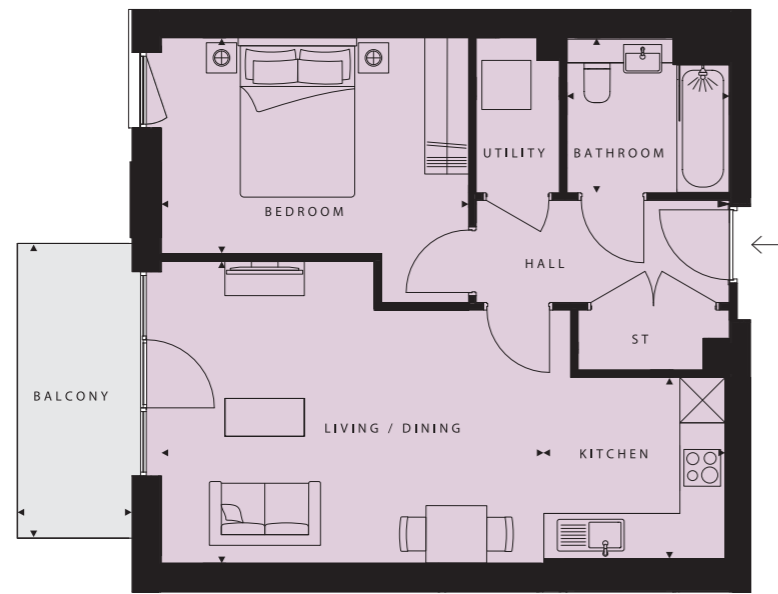
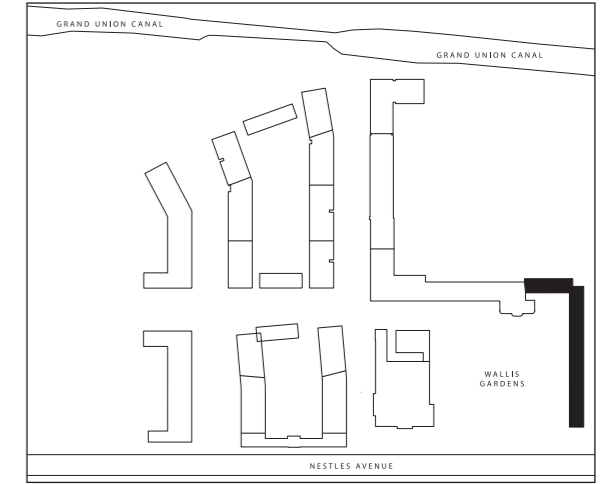
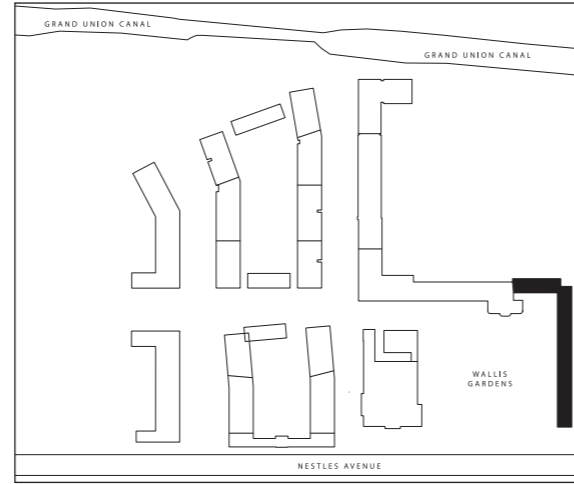


Ground Floor

<b>PLOT 304 (0), 307 (0)</b>
Living/Dining 16'1" x 13'11" (4908 x 3995mm)
Kitchen 7'8" x 7'8" (2400 x 2400mm)
Bedroom 12'8" x 9'3" (3914 x 2855mm)
Bathroom 7'1" x 6'9" (2150 x 2050mm)
<b>TOTAL AREA</b> 557.4 sq ft (51.8 sq m)
Terrace 20'8" x 3'5" (6350 x 1090mm)

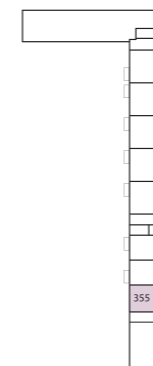
# Thornton Apartments

## 1 bedroom apartment



Level 4

PLOT 353 (4), 354 (4)	
Living/Dining	16'5" x 13'1" (5055 x 3995mm)
Kitchen	7'8" x 7'8" (2400 x 2400mm)
Bedroom	13'3" x 9'3" (4063 x 2855mm)
Bathroom	7'1" x 5'1" (2150 x 2050mm)
<b>TOTAL AREA</b>	<b>566.9 sq ft (52.7 sq m)</b>
Balcony	12'7" x 4'9" (3880 x 1515mm)

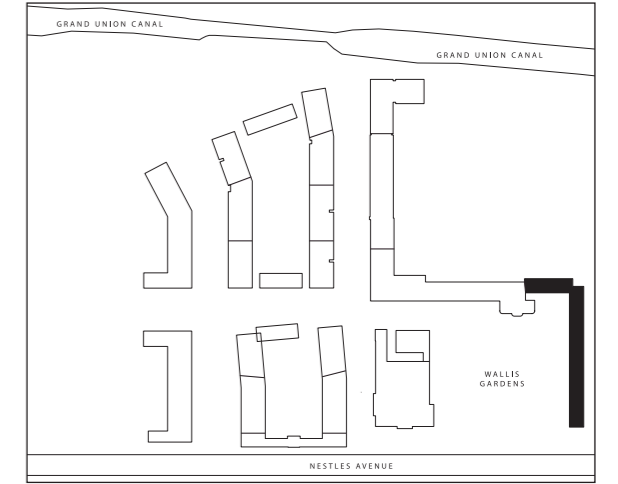
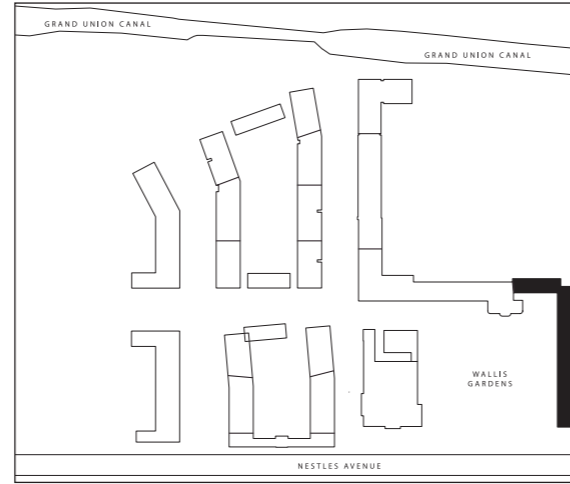


Level 4

PLOT 355 (4)	
Living/Dining	18'5" x 12'0" (5663 x 3663mm)
Kitchen	12'0" x 5'9" (3663 x 1800mm)
Bedroom	12'8" x 10'3" (3918 x 3160mm)
Bathroom	7'1" x 6'9" (2150 x 2050mm)
<b>TOTAL AREA</b>	<b>608.3 sq ft (56.5 sq m)</b>
Terrace	24'0" x 8'7" (7316 x 2672mm)

# Thornton Apartments

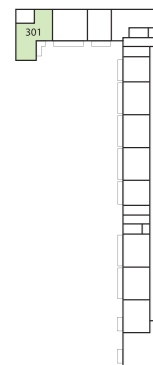
## 2 bedroom apartment



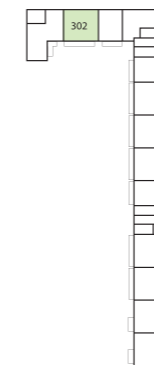
- PLOT 301 (0)
- Living/Dining  
21'8" x 15'8" (6661 x 4838mm)
- Kitchen  
15'8" x 5'9" (4838 x 1800mm)
- Bedroom 1  
11'7" x 11'1" (3590 x 3387mm)
- En suite  
7'1" x 5'1" (2150 x 1550mm)
- Bedroom 2  
12'7" x 10'6" (3880 x 3237mm)
- Bathroom  
7'1" x 6'8" (2150 x 2036mm)
- TOTAL AREA  
1040.7 sq ft (96.7 sq m)
- Terrace  
14'3" x 7'1" (4360 x 2180mm)



- PLOT 302 (0)
- Living/Dining  
20'5" x 13'0" (6269 x 3990mm)
- Kitchen  
12'7" x 7'1" (3874 x 2192mm)
- Bedroom 1  
20'5" x 9'2" (6269 x 2850mm)
- En suite  
7'1" x 5'1" (2150 x 1550mm)
- Bedroom 2  
15'0" x 9'3" (4574 x 2857mm)
- Bathroom  
7'1" x 6'9" (2150 x 2050mm)
- TOTAL AREA  
924.8 sq ft (85.9 sq m)
- Terrace  
26'0" x 5'0" (7950 x 1500mm)



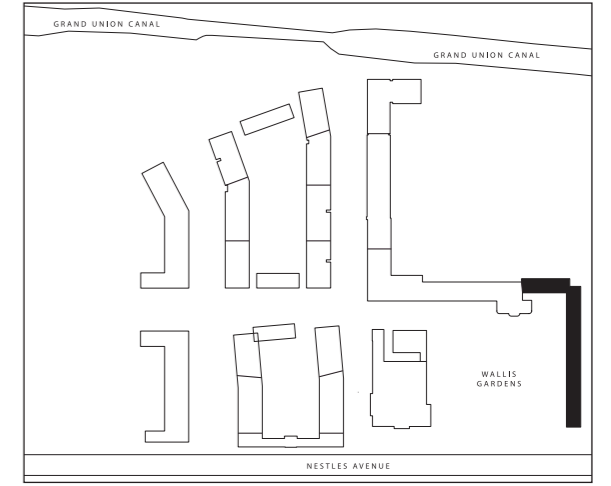
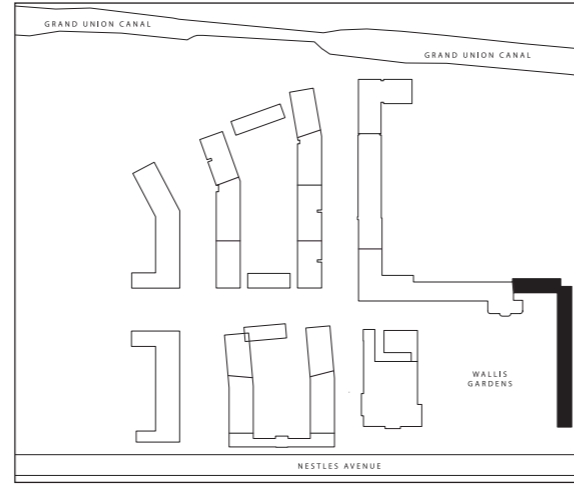
Ground Floor



Ground Floor

# Thornton Apartments

## 2 bedroom apartment



PLOT 305 (0), 306 (0), 308 (0),  
309 (0), 356 (0)

Living/Dining  
16'1" x 11'3" (4906 x 3466mm)

Kitchen  
9'6" x 7'8" (2944 x 2400mm)

Bedroom 1  
16'7" x 9'0" (5114 x 2764mm)

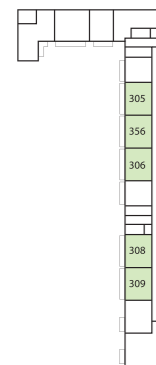
En suite  
7'1" x 5'1" (2150 x 1550mm)

Bedroom 2  
11'7" x 9'3" (3580 x 2848mm)

Bathroom  
7'1" x 6'9" (2150 x 2050mm)

TOTAL AREA  
741.6 sq ft (68.9 sq m)

Terrace  
30'5" x 3'5" (9324 x 1090mm)



Ground Floor



PLOT 310 (0)

Living/Dining  
16'0" x 11'2" (4906 x 3416mm)

Kitchen  
9'6" x 7'8" (2944 x 2400mm)

Bedroom 1  
14'8" x 9'2" (4525 x 2814mm)

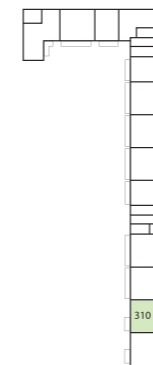
En suite  
7'1" x 5'1" (2150 x 1550mm)

Bedroom 2  
11'7" x 9'3" (3580 x 2850mm)

Bathroom  
7'1" x 6'9" (2150 x 2050mm)

TOTAL AREA  
729.5 sq ft (67.8 sq m)

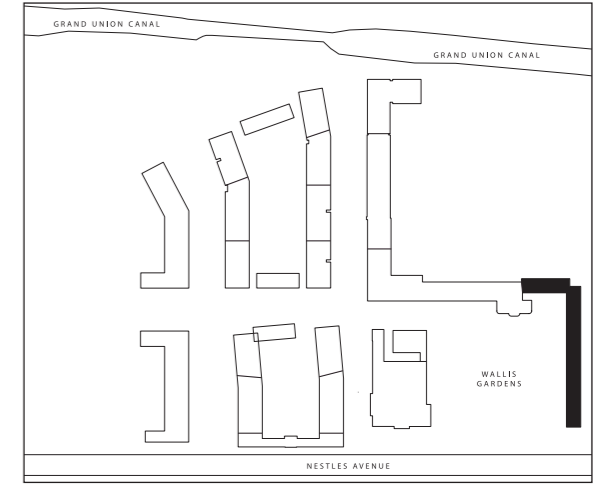
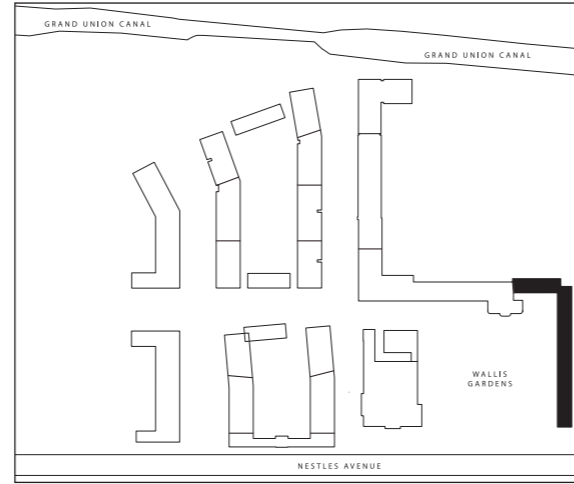
Terrace  
12'7" x 4'9" (3880 x 1515mm)



Ground Floor

# Thornton Apartments

## 2 bedroom apartment



PLOT 312 (1), 324 (2), 336 (3)

Living/Dining  
18'0" x 13'7" (5493 x 4198mm)

Kitchen  
9'8" x 5'9" (2998 x 1800mm)

Bedroom 1  
21'3" x 9'0" (6519 x 2750mm)

En suite  
7'1" x 5'1" (2150 x 1550mm)

Bedroom 2  
14'0" x 9'0" (4278 x 2750mm)

Bathroom  
7'1" x 6'9" (2150 x 2050mm)

TOTAL AREA  
946.6 sq ft (87.9 sq m)

Balcony  
11'4" x 4'9" (3500 x 1515mm)

PLOT 313 (1), 325 (2), 337 (3)

Living/Dining  
16'4" x 12'5" (5019 x 3814mm)

Kitchen  
12'5" x 5'9" (3814 x 1800mm)

Bedroom 1  
13'1" x 10'9" (4008 x 3330mm)

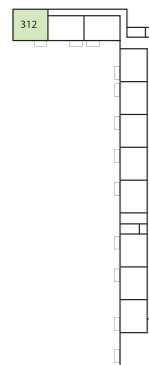
En suite  
7'1" x 5'1" (2150 x 1550mm)

Bedroom 2  
11'1" x 9'4" (3387 x 2884mm)

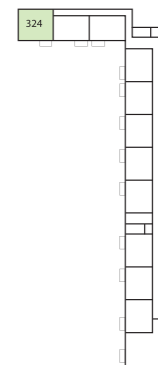
Bathroom  
7'1" x 6'9" (2150 x 2050mm)

TOTAL AREA  
756.8 sq ft (70.3 sq m)

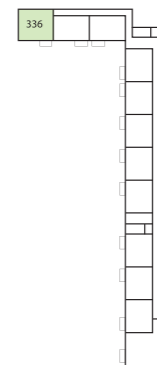
Balcony  
12'7" x 4'9" (3880 x 1515mm)



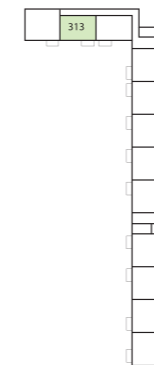
Level 1



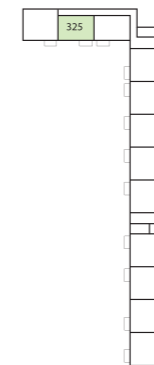
Level 2



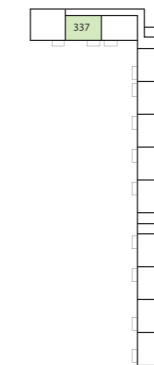
Level 3



Level 1



Level 2

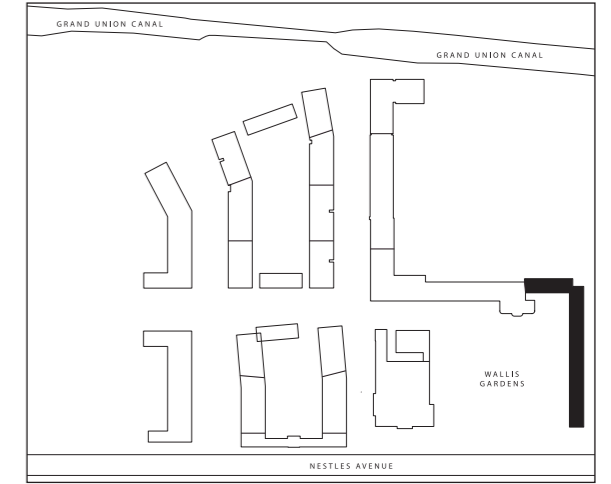
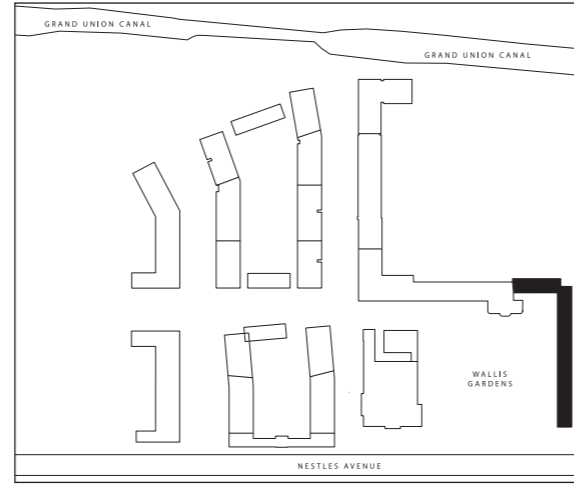


Level 3



# Thornton Apartments

## 2 bedroom apartment



Level 1

Level 2

Level 3

PLOT 314 (1), 326 (2), 338 (3)

Living/Dining  
16'4" x 12'5" (5019 x 3814mm)

Kitchen  
12'5" x 5'9" (3814 x 1800mm)

Bedroom 1  
15'1" x 9'0" (4627 x 2750mm)

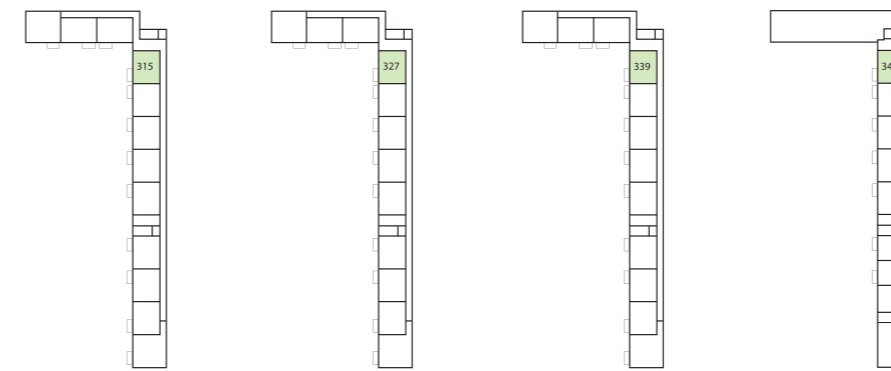
En suite  
7'1" x 5'1" (2150 x 1550mm)

Bedroom 2  
11'4" x 9'9" (3479 x 3021mm)

Bathroom  
7'1" x 6'9" (2150 x 2050mm)

TOTAL AREA  
767.4 sq ft (71.3 sq m)

Balcony  
12'7" x 4'9" (3880 x 1515mm)



Level 1

Level 2

Level 3

Level 4

PLOT 315 (1), 327 (2), 339 (3), 348 (4)

Living/Dining  
16'5" x 11'3" (5055 x 3466mm)

Kitchen  
9'6" x 7'8" (2944 x 2400mm)

Bedroom 1  
17'2" x 9'0" (5263 x 2764mm)

En suite  
7'1" x 5'1" (2150 x 1550mm)

Bedroom 2  
12'2" x 9'3" (3729 x 2848mm)

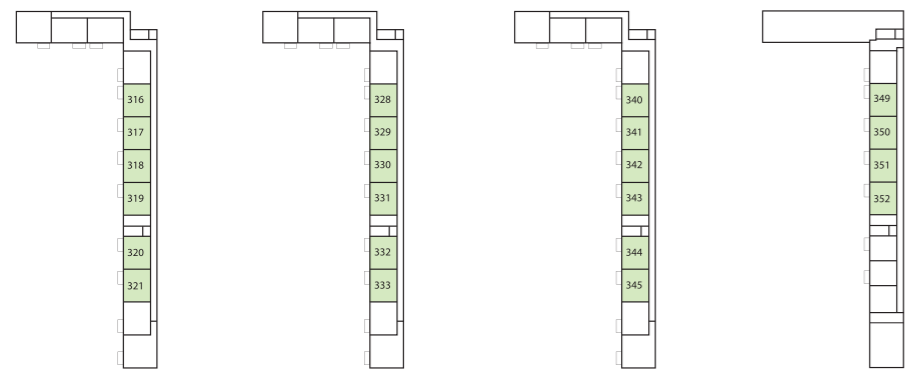
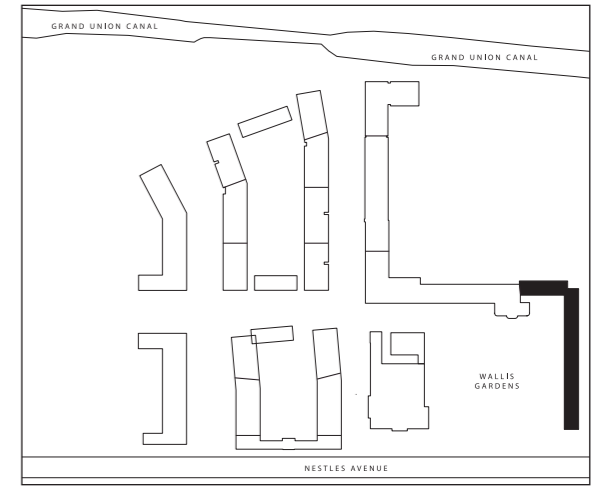
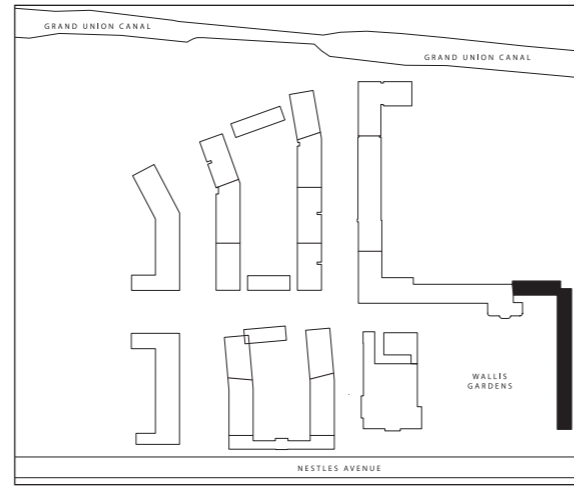
Bathroom  
7'1" x 6'9" (2150 x 2050mm)

TOTAL AREA  
757.0 sq ft (70.3 sq m)

Balcony  
12'7" x 4'9" (3880 x 1515mm)

# Thornton Apartments

## 2 bedroom apartment



Level 1      Level 2      Level 3      Level 4

PLOT 316 (1), 317 (1), 318 (1),  
319 (1), 320 (1), 321 (1), 328 (2),  
329 (2), 330 (2), 331 (2), 332 (2),  
333 (2), 340 (3), 341 (3), 342 (3),  
343 (3), 344 (3), 345 (3), 349 (4),  
350 (4), 351 (4), 352 (4)

Living/Dining  
16'5" x 11'3" (5055 x 3466mm)

Kitchen  
9'6" x 7'8" (2944 x 2400mm)

Bedroom 1  
17'2" x 9'0" (5263 x 2764mm)

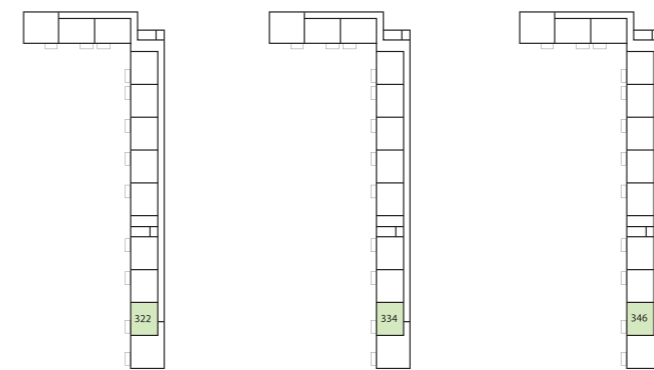
En suite  
7'1" x 5'1" (2150 x 1550mm)

Bedroom 2  
12'2" x 9'3" (3729 x 2848mm)

Bathroom  
7'1" x 6'9" (2150 x 2050mm)

TOTAL AREA  
757.0 sq ft (70.3 sq m)

Balcony  
12'7" x 4'9" (3880 x 1515mm)



Level 1      Level 2      Level 3

PLOT 322 (1), 334 (2), 346 (3)

Living/Dining  
16'5" x 11'2" (5055 x 3414mm)

Kitchen  
9'6" x 7'8" (2942 x 2400mm)

Bedroom 1  
15'3" x 9'2" (4674 x 2814mm)

En suite  
7'1" x 5'1" (2150 x 1550mm)

Bedroom 2  
12'2" x 9'3" (3729 x 2850mm)

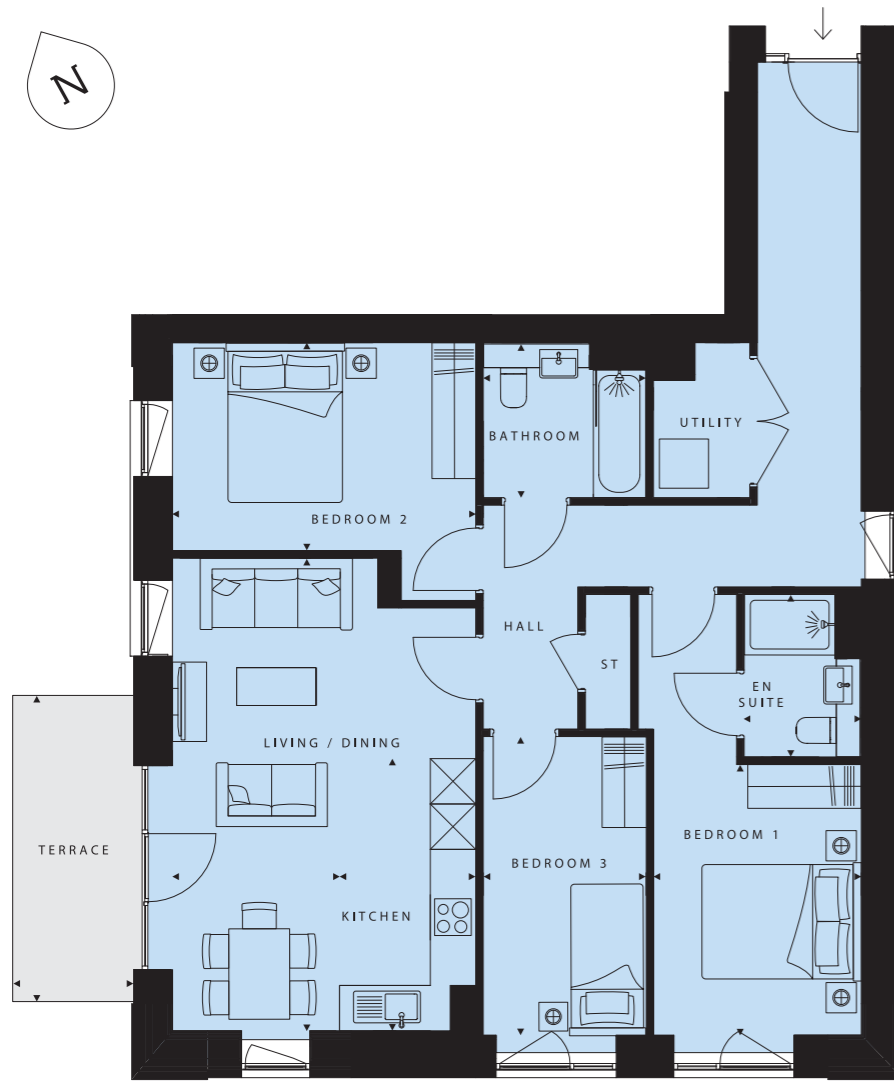
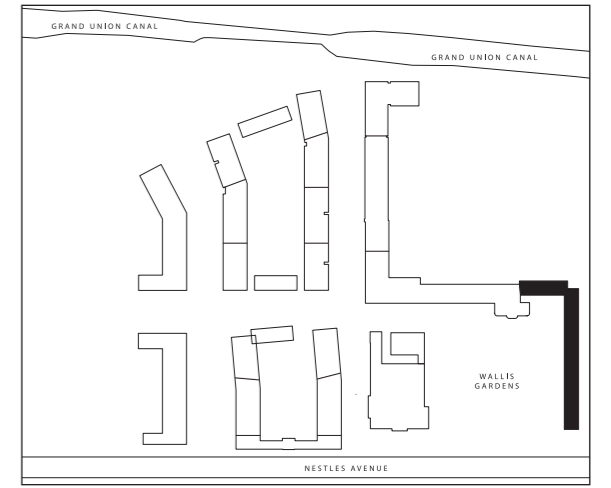
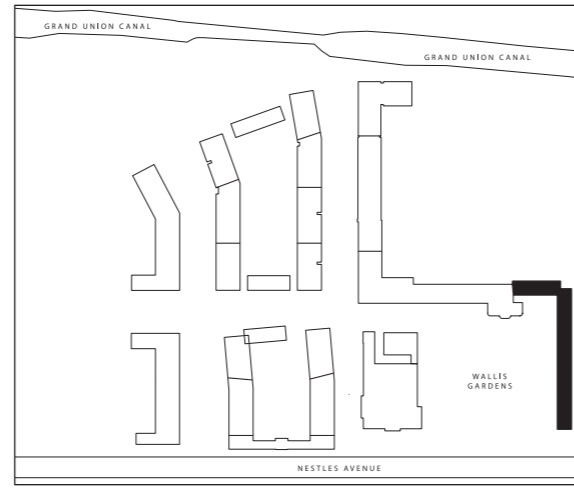
Bathroom  
7'1" x 6'9" (2150 x 2050mm)

TOTAL AREA  
745.4 sq ft (69.3 sq m)

Balcony  
12'7" x 4'9" (3880 x 1515mm)

# Thornton Apartments

## 3 bedroom apartment



PLOT 311 (0)

---

Living/Dining  
20'5" x 7'2" (6253 x 2210mm)

---

Kitchen  
11'8" x 5'9" (3600 x 1800mm)

---

Bedroom 1  
11'7" x 9'0" (3580 x 2750mm)

---

En suite  
7'1" x 5'1" (2150 x 1550mm)

---

Bedroom 2  
13'1" x 9'0" (4010 x 2750mm)

---

Bedroom 3  
12'9" x 7'0" (3950 x 2154mm)

---

Bathroom  
7'1" x 6'9" (2150 x 2050mm)

---

TOTAL AREA  
979.6 sq ft (91.0 sq m)

---

Terrace  
13'2" x 5'2" (4050 x 1600mm)



PLOT 323 (1), 335 (2), 347 (3)

---

Living/Dining  
21'2" x 7'8" (6485 x 2389mm)

---

Kitchen  
11'8" x 5'9" (3600 x 1800mm)

---

Bedroom 1  
11'8" x 9'4" (3600 x 2871mm)

---

En suite  
7'1" x 5'1" (2150 x 1550mm)

---

Bedroom 2  
13'7" x 9'0" (4189 x 2750mm)

---

Bedroom 3  
13'0" x 7'0" (3971 x 2150mm)

---

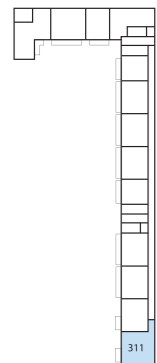
Bathroom  
7'1" x 6'9" (2150 x 2050mm)

---

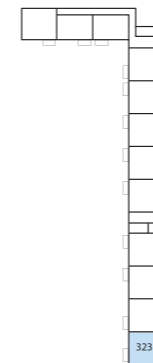
TOTAL AREA  
1034.6 sq ft (96.1 sq m)

---

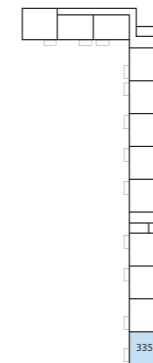
Balcony  
12'7" x 4'9" (3880 x 1515mm)



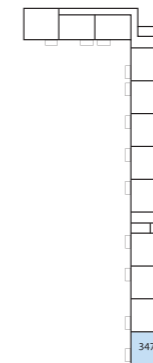
Ground Floor



Level 1



Level 2



Level 3

# Specification

## Kitchen

Individually designed handleless kitchens with soft close doors and drawers

Matching worktops and upstands

Stainless steel bowl sink and chrome tap

Fully integrated appliances including combi oven, hood, ceramic hob, dishwasher and fridge/freezer

Spotlight lighting

## Bathroom

White hand wash basin

Toilet with soft close pan

White bath with bath screen

White freestanding shower tray (where applicable)

White heated towel rail

Ceramic wall tiles

Ceramic floor tiles

Shaver socket

Spotlight lighting

## En suite

White hand wash basin

Toilet with soft close pan

White bath with bath screen (where applicable)

White freestanding shower tray (where applicable)

White heated towel rail

Ceramic wall tiles

Ceramic floor tiles

Shaver socket

Spotlight lighting

## General

Video door entry

BT TV/Sky+/FM connectivity in living area

Fibre broadband connectivity

Pendant lighting in hallway, living area and bedrooms

Flooring finishes available at an additional cost – please speak to a Sales Adviser for more information

## Bedrooms

TV connectivity

Communal areas and facilities

Lifts to all floors

Entrance foyer within each block

Car parking\*



\* Car parking will be available for selected homes at an additional cost

CGIs are indicative and for illustrative purposes only. Includes optional upgrades available at additional cost.



**TURYAP<sup>®</sup>**  
UK