



**HIGH STREET
QUARTER**
HOUSLOW



A VIBRANT NEW RESIDENTIAL QUARTER





WELCOME TO
HIGH STREET QUARTER
HOUSLOW

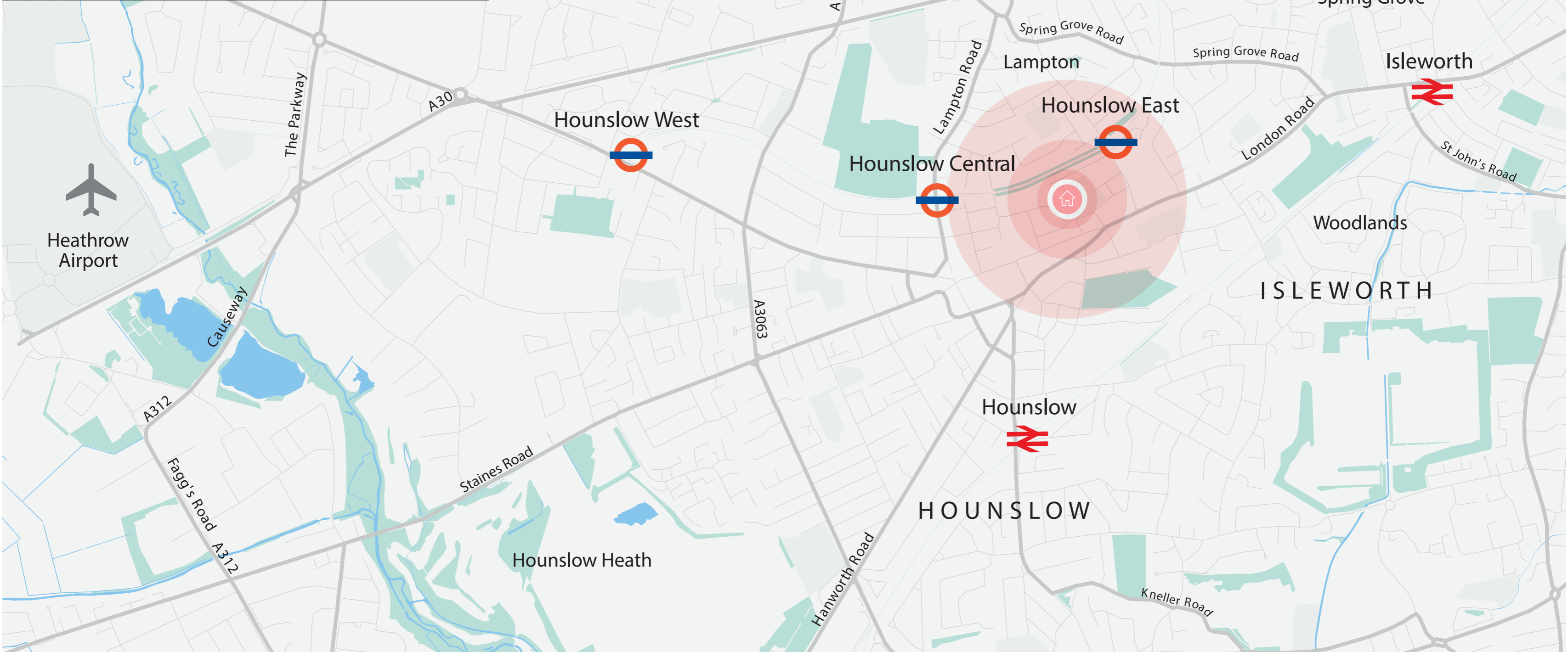
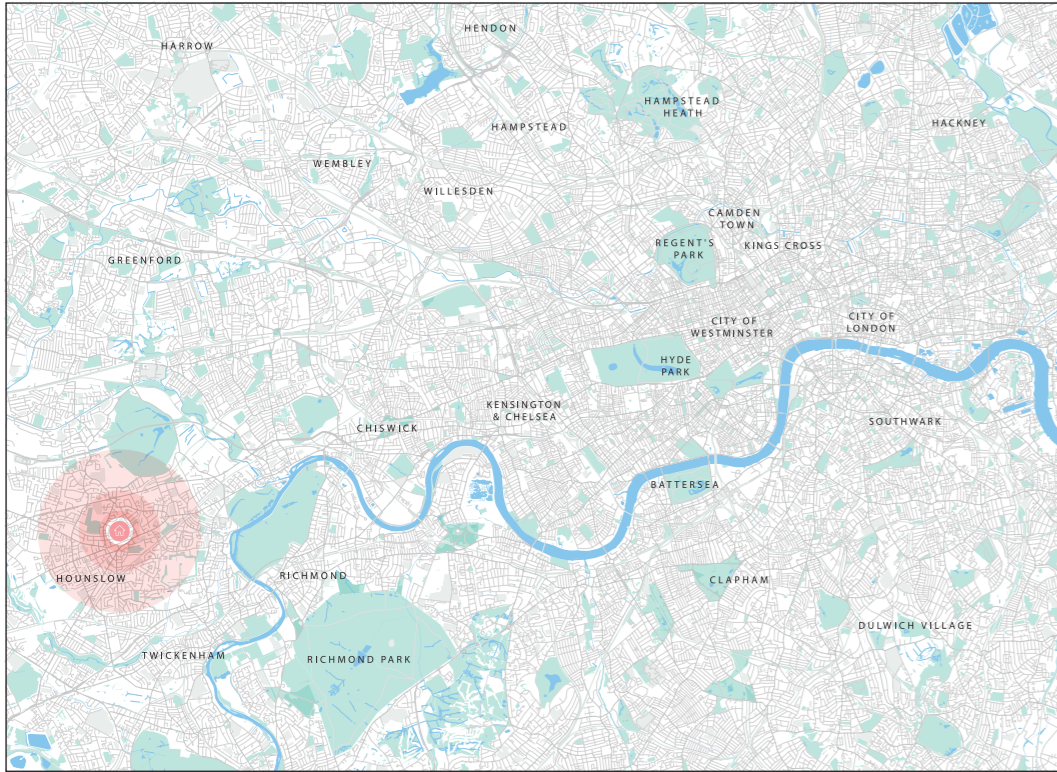


Be at the heart of it

Imagine coming home to your own bright, contemporary apartment. A place designed for modern living, where community matters, and you are part of it.

High Street Quarter Hounslow is an exciting new development, located in Hounslow town centre. Built around a public square with shops, restaurants, cafés and a Cineworld, it will offer a wealth of amenities on your doorstep.

This pristine pedestrianised development will provide a range of one, two and three-bedroom apartments, all with their own private outdoor space. Living at High Street Quarter Hounslow will offer you the perfect opportunity to enjoy a cosmopolitan lifestyle, right in the heart of a buzzing new residential quarter.



A London town with an exciting future

High Street Quarter Hounslow is situated in the London Borough of Hounslow, just a stone's throw away from public transport links to central London and Heathrow Airport.

This pristine new development will extend the town's main high street and improve – and add to – local amenities. A wide-ranging regeneration programme will be ongoing in the area, helping to transform it into a diverse, cosmopolitan town centre community.

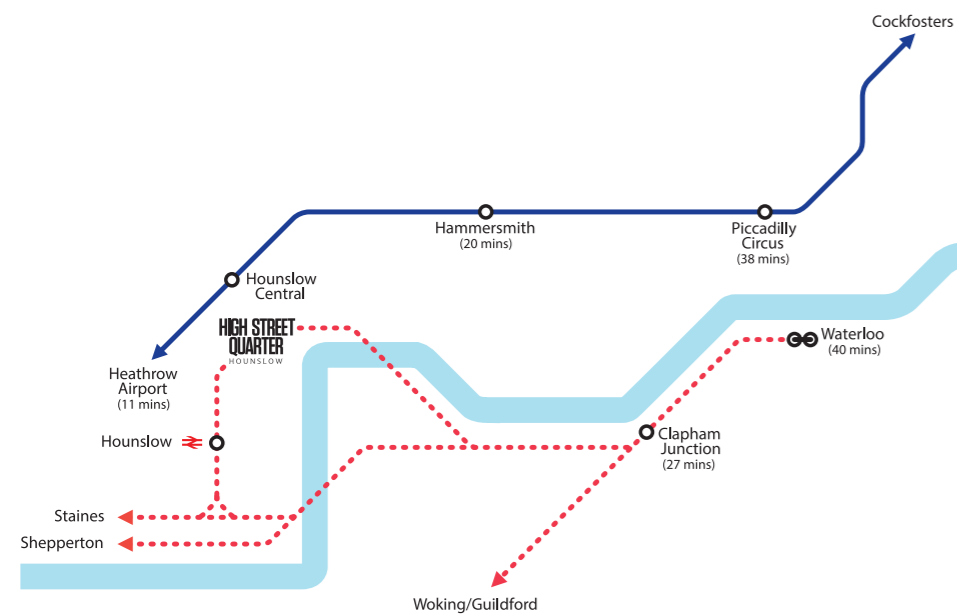


The best of London within easy reach

Getting around couldn't be easier. Hounslow has a wealth of transport options and offers easy access to Heathrow Airport, central London and further afield. High Street Quarter Hounslow will be a five-minute walk away from Hounslow East Tube station,

making central London accessible in around 35 minutes and Heathrow in less than 20 minutes. The development will be served by the Piccadilly line and National Rail, and the M25 is just 25 minutes away by car.

By foot	
5-minute walk to Hounslow East (Piccadilly line)	15 minutes to Richmond station
7-minute walk to Hounslow Central (Piccadilly line)	27 minutes to Clapham Junction
7-minute walk to Hounslow West (Piccadilly line)	33 minutes to Vauxhall
12-minute walk to Hounslow rail station (South West trains)	40 minutes to Waterloo
By Tube (from Hounslow East Tube)	
37 minutes to Green Park	16-minute drive to Twickenham
41 minutes to Paddington	20-minute drive to Richmond Park
45 minutes to Oxford Street	25-minute drive to the M25
50 minutes to Kings Cross St Pancras	27-minute drive to Kingston upon Thames
56 minutes to Bank	
To London airports	
Heathrow	19 minutes by car or 16 minutes by Tube
Gatwick	52 minutes by car or 1 hour 15 minutes by train



Travel times are approximate. Sources: tfl.gov.uk and maps.google.com



Treaty Centre, Hounslow



Richmond riverside

An exciting residential quarter coming to the heart of Hounslow

Along with a number of other partners, Barratt London is working with the London Borough of Hounslow to help deliver a masterplan for the area. A number of regeneration projects will act as a catalyst for change and to attract further investment into the area. High Street Quarter Hounslow will help to transform the town centre with new high-quality housing and communal facilities.

In addition to new homes, High Street Quarter Hounslow will include plenty of public space, which will be filled with shops, restaurants, event space and a brand new multiplex Cineworld. The result will be a thriving and cosmopolitan central location for you to call home.

The development has been designed to maximise private and communal space – all homes will have their own terrace or balcony and communal gardens will provide attractive outdoor space for residents.

Underground car parking will be available for most two and three-bedroom homes, with a number of electric car charging points. Over 200 cycle spaces will also be available in the underground car park for residents.





Airy interiors finished to perfection

Whether you choose a one, two or three-bedroom apartment, you'll enjoy a home filled with light and style. Open-plan living areas feature floor-to-ceiling glazing allowing natural light to flood in, while kitchens are equipped with a full range of modern appliances, making cooking and entertaining a pleasure. Contemporary bathrooms

and en suites, complete with stylish fittings in white and chrome, are finished with attractive ceramic wall tiling.

All homes have their own private balcony or terrace, providing an outdoor extension of your living space, allowing you to enjoy the buzzing atmosphere of Hounslow town centre.





Great shopping and dining on your doorstep

Hounslow is a diverse and rapidly growing community with a wide range of eateries, attractions, museums and parks. You will find there's something for everyone, whatever you like doing.

For a bit of retail therapy there's the Treaty Centre and the High Street.

With a wide range of drinking and dining options, including cafés, restaurants and bars, you'll never be stuck for choice. Local favourites include Takaa Tak, Indian Relish, Sangeetha, Folvark and Cafe Restaurante Moniz.

If you are a culture fan, The Arts Centre is a short walk away.

Popular places to explore

Fill your weekends visiting some of the other local attractions nearby.

Syon House and Park is one of the last great houses of London. Situated in beautiful countryside, it's just a ten-minute drive or short bus journey away.

One of the city's finest, Richmond Park is a National Nature Reserve and the largest of London's eight Royal Parks. You could be at this perfect location for leisurely walks and wildlife spotting in just 25 minutes by car.

A great day out for the whole family is the fascinating London Museum of Water and Steam. This collection of magnificent steam and pumping engines is just up the road in Brentford.

If you love rugby, you'll love Twickenham. Home to Twickenham Stadium and the World Rugby Museum, this pretty riverside town is well worth a visit, and only 15 minutes away by car.

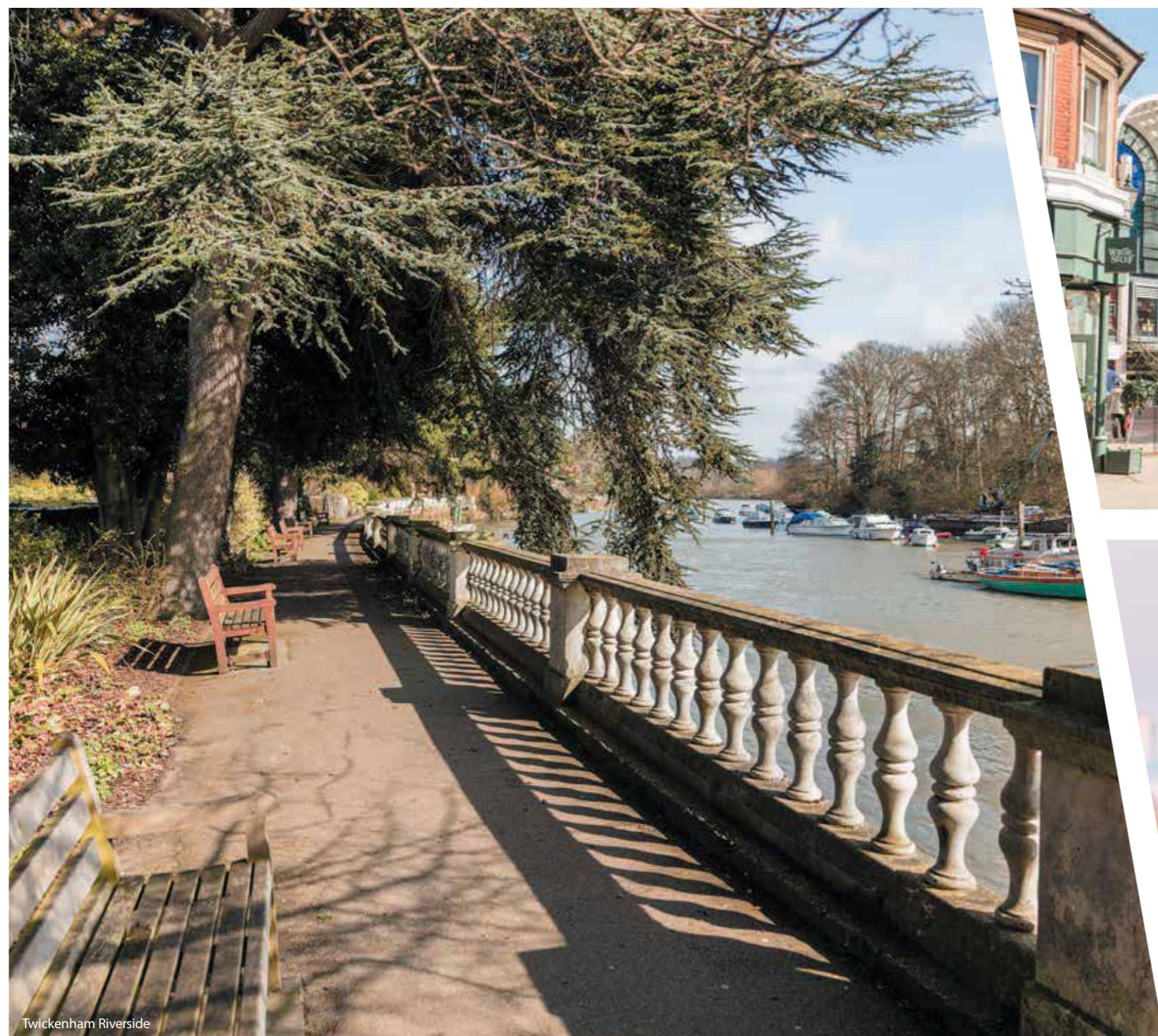
For even more shopping options, Kingston upon Thames is easily reachable by car or public transport. Home to over 500 stores, two shopping centres and a bustling market place, it's the perfect place to shop 'til you drop. A hub for art and culture, you'll find there's something for everyone here, making it a great day out for all the family.



Syon House, Isleworth



Twickenham Rugby Stadium



Twickenham Riverside



Kingston Town Centre



Richmond Park



Site plan

High Street Quarter Hounslow is well positioned for a contemporary lifestyle, with a busy high street, entertainment and plenty to do right on the doorstep. This vibrant, multicultural town centre has something

to suit everyone, with great Tube, rail and road connections, 'outstanding' schools within walking distance, cultural attractions and plenty of green spaces close by.

- 1 Level 1 residents' communal garden
- 2 Level 4 residents' communal garden



Syon Apartments

Floor plates

One-bedroom apartments
 Two-bedroom apartments
 Three-bedroom apartments
 Shared Ownership

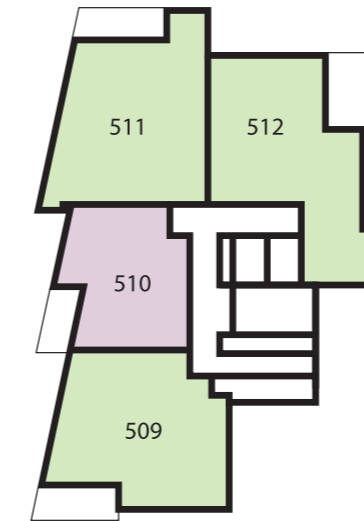
Level 1



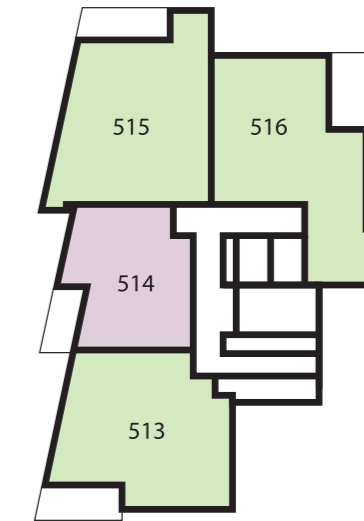
Level 2



Level 7



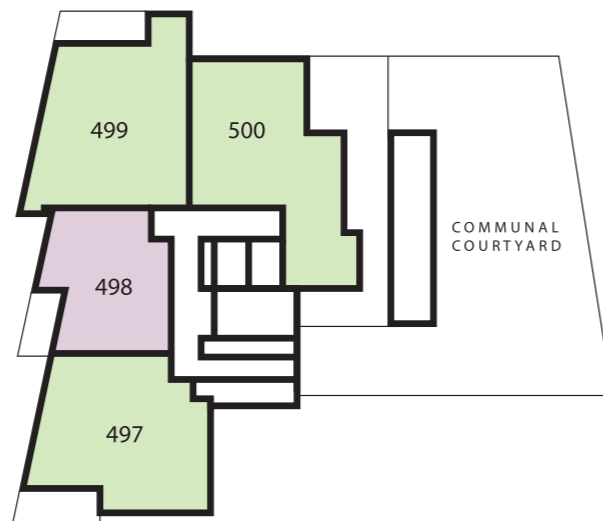
Level 8



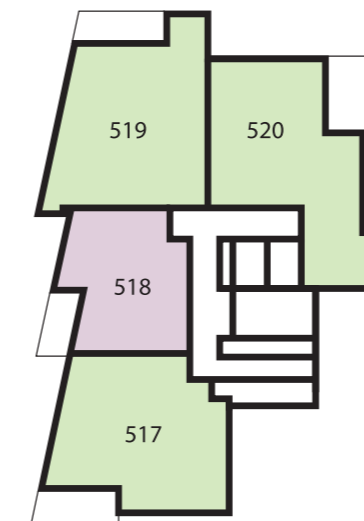
Level 3



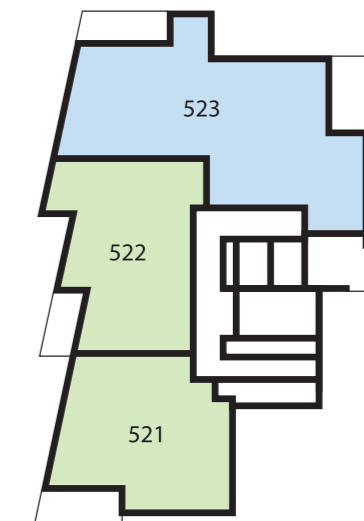
Level 4



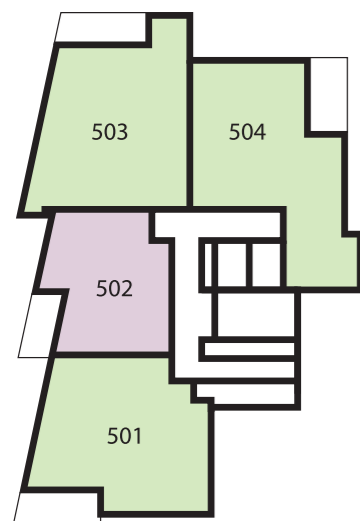
Level 9



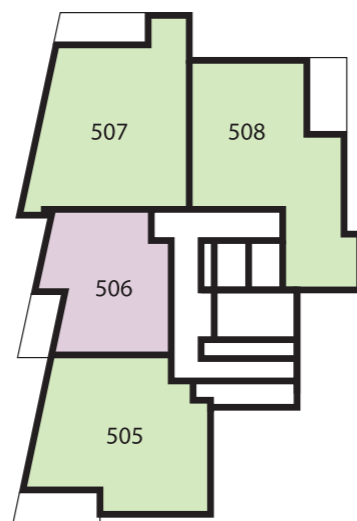
Level 10



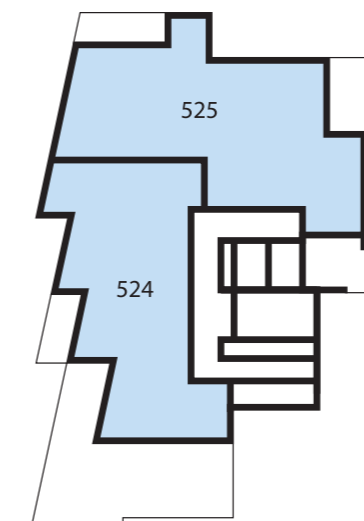
Level 5



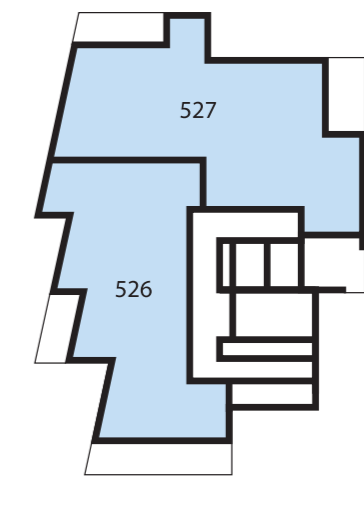
Level 6



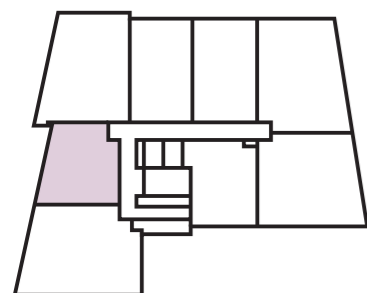
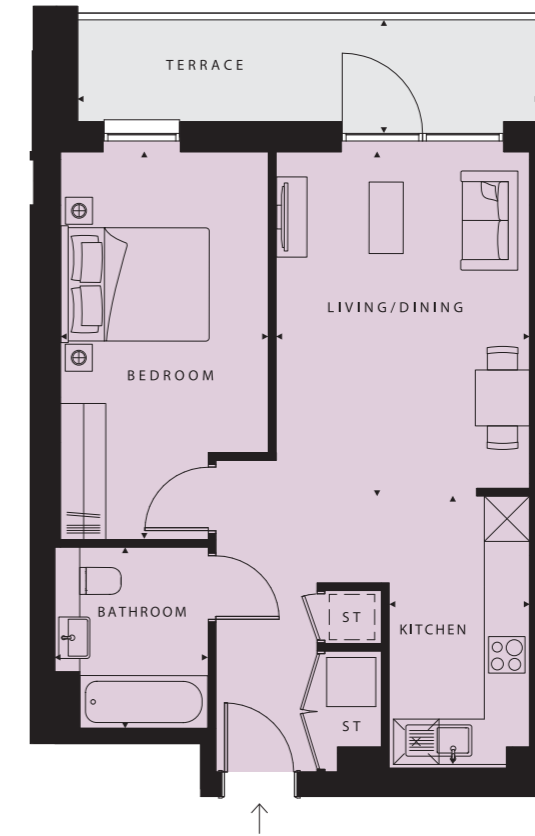
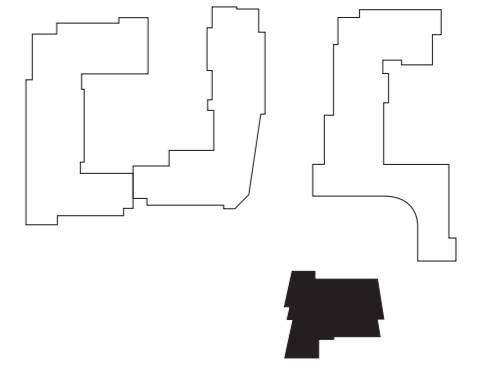
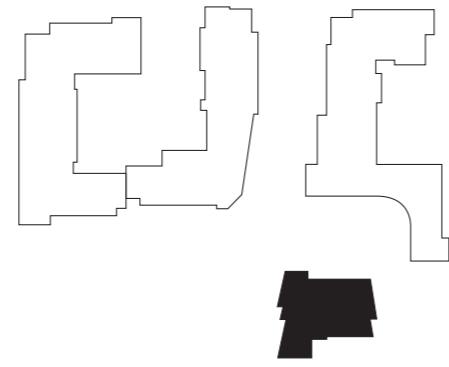
Level 11



Level 12



Syon Apartments
1 bedroom
apartment



PLOT 474 (1)

Kitchen
10'4" x 5'9" (3160 x 1750mm)

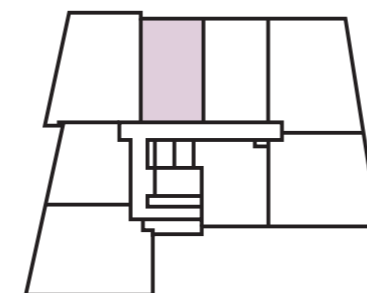
Living/Dining
13'7" x 13'4" (4145 x 4060mm)

Bedroom
12'7" x 11'11" (3840 x 3635mm)

Bathroom
7'10" x 6'8" (2400 x 2030mm)

TOTAL AREA
528 sq ft (49.0 sq m)

Terrace
13'6" x 4'9" (4104 x 1450mm)



PLOT 476 (1)

Kitchen
11'8" x 6'1" (3550 x 1860mm)

Living/Dining
14'11" x 11'0" (4555 x 3355mm)

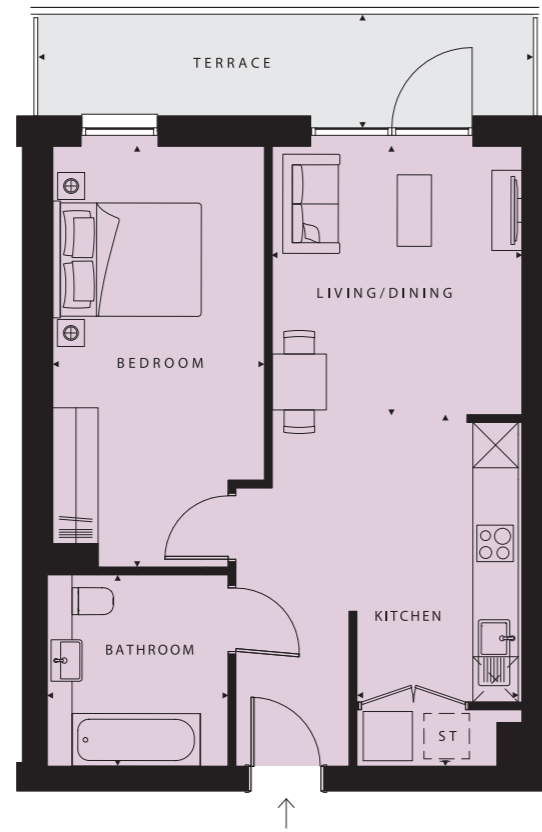
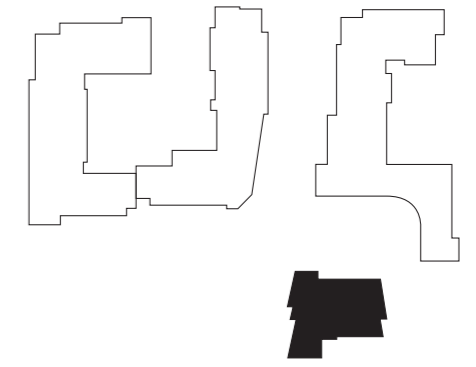
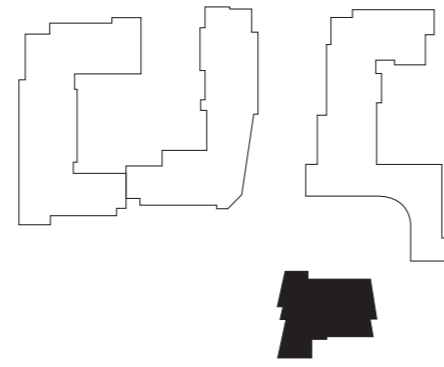
Bedroom
16'10" x 9'0" (5130 x 2750mm)

Bathroom
7'10" x 6'8" (2400 x 2030mm)

TOTAL AREA
531 sq ft (49.4 sq m)

Terrace
20'1" x 4'11" (6129 x 1486mm)

Syon Apartments
1 bedroom
apartment



PLOT 477 (1)

Kitchen
15'3" x 7'0" (4650 x 2135mm)

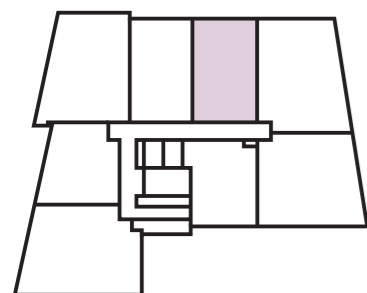
Living/Dining
11'8" x 10'10" (3555 x 3305mm)

Bedroom
18'3" x 9'2" (5570 x 2800mm)

Bathroom
8'4" x 7'10" (2535 x 2395mm)

TOTAL AREA
546 sq ft (50.7 sq m)

Terrace
21'6" x 4'11" (6555 x 1502mm)



PLOT 482 (2), 490 (3), 498 (4),
502 (5), 506 (6), 510 (7),
514 (8), 518 (9)

Kitchen
10'4" x 5'9" (3161 x 1750mm)

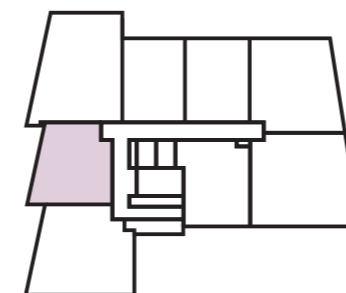
Living/Dining
13'7" x 13'4" (4145 x 4060mm)

Bedroom
12'7" x 11'11" (3840 x 3630mm)

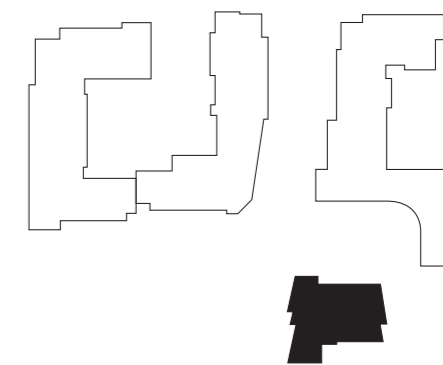
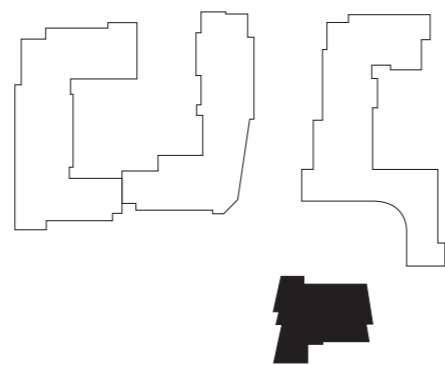
Bathroom
7'10" x 6'8" (2400 x 2030mm)

TOTAL AREA
529 sq ft (49.1 sq m)

Balcony
12'11" x 5'0" (3925 x 1524mm)



Syon Apartments
1 bedroom
apartment



PLOT 484 (2)

Kitchen
11'8" x 5'11" (3550 x 1810mm)

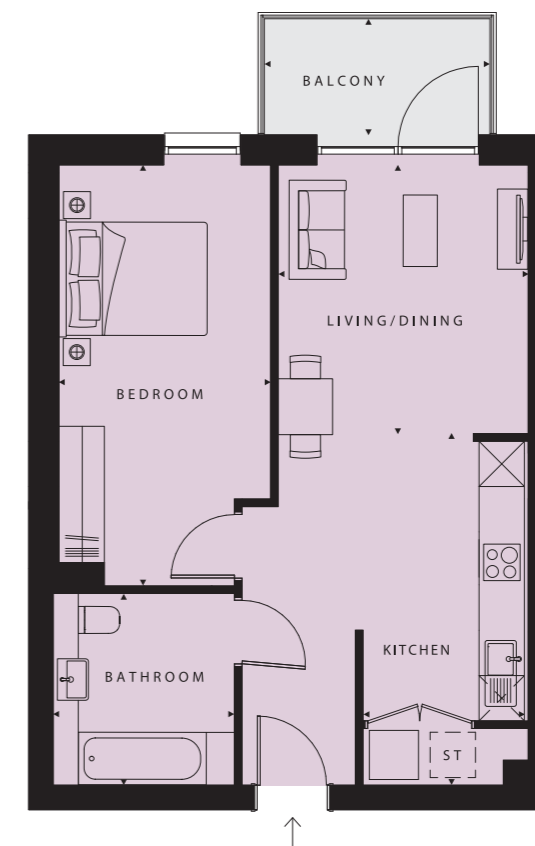
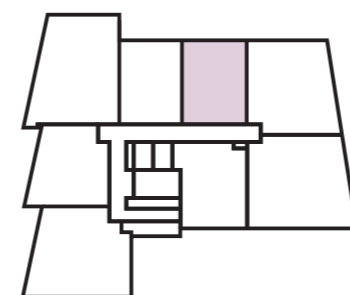
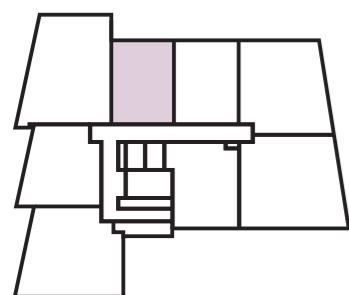
Living/Dining
14'11" x 11'0" (4550 x 3355mm)

Bedroom
16'10" x 9'0" (5125 x 2750mm)

Bathroom
7'10" x 6'8" (2400 x 2030mm)

TOTAL AREA
533 sq ft (49.5 sq m)

Balcony
9'10" x 5'0" (2985 x 1536mm)



PLOT 485 (2)

Kitchen
15'3" x 7'0" (4650 x 2135mm)

Living/Dining
11'8" x 10'10" (3550 x 3305mm)

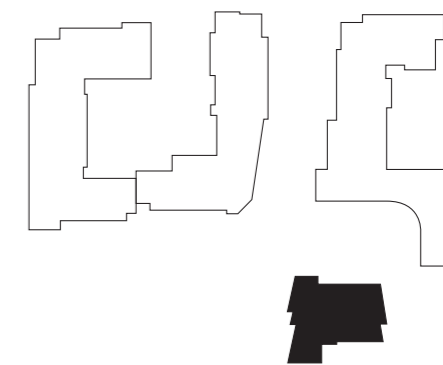
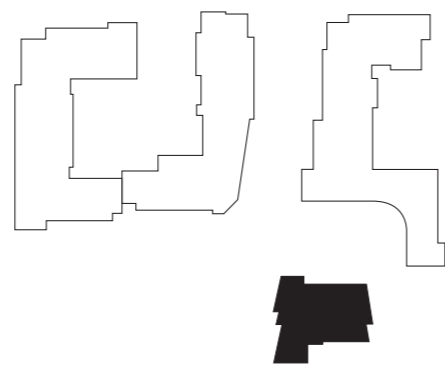
Bedroom
18'3" x 9'2" (5557 x 2800mm)

Bathroom
8'4" x 7'10" (2535 x 2395mm)

TOTAL AREA
546 sq ft (50.7 sq m)

Balcony
9'9" x 5'0" (2982 x 1536mm)

Syon Apartments
1 bedroom
apartment



PLOT 492 (3)

Kitchen
11'8" x 6'1" (3550 x 1860mm)

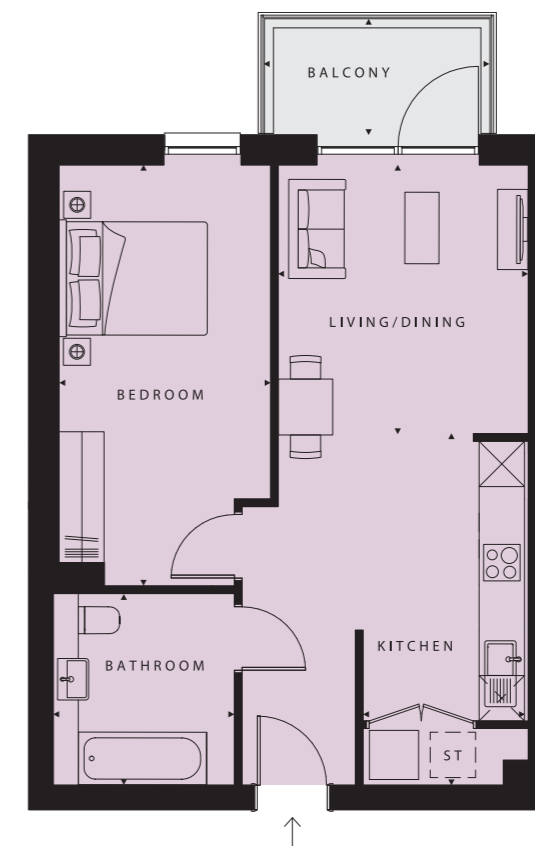
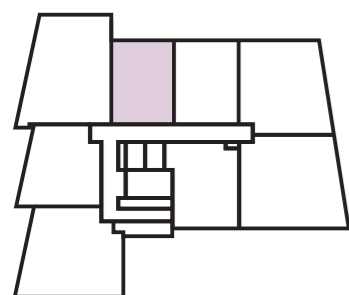
Living/Dining
14'11" x 11'0" (4550 x 3355mm)

Bedroom
16'10" x 9'0" (5125 x 2750mm)

Bathroom
7'10" x 6'8" (2400 x 2030mm)

TOTAL AREA
533 sq ft (49.5 sq m)

Balcony
9'9" x 5'1" (2980 x 1550mm)



PLOT 493 (3)

Kitchen
15'3" x 7'0" (4650 x 2135mm)

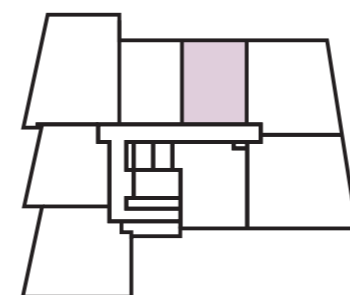
Living/Dining
11'8" x 10'10" (3550 x 3305mm)

Bedroom
18'3" x 9'2" (5565 x 2800mm)

Bathroom
8'4" x 7'10" (2535 x 2395mm)

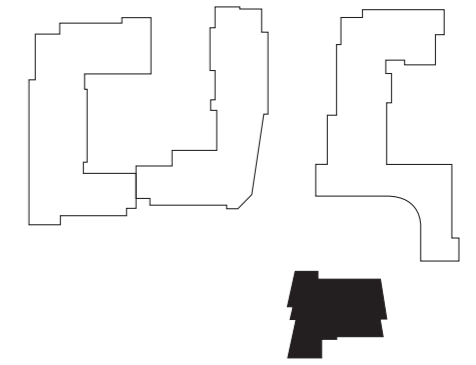
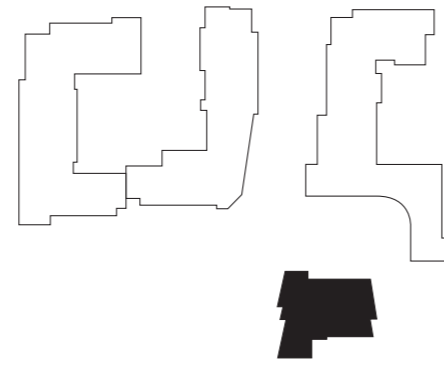
TOTAL AREA
546 sq ft (50.8 sq m)

Balcony
9'9" x 5'0" (2982 x 1536mm)

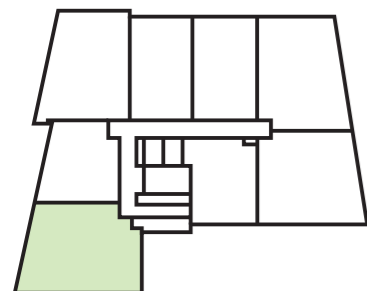


Syon Apartments

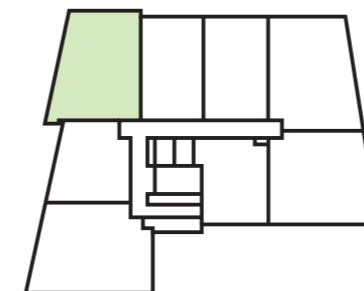
2 bedroom apartment



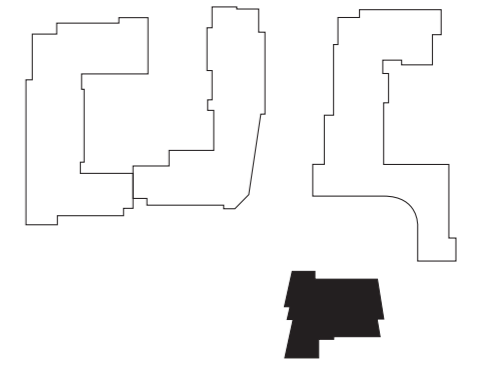
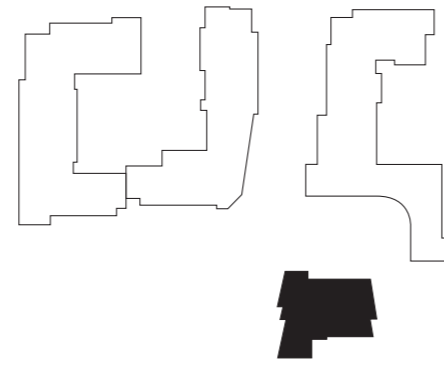
PLOT 473 (1)
Kitchen 10'0" x 6'3" (3045 x 1905mm)
Living/Dining 17'0" x 12'4" (5185 x 3770mm)
Bedroom 1 15'8" x 9'0" (4785 x 2750mm)
En suite 7'10" x 6'2" (2400 x 1890mm)
Bedroom 2 15'6" x 9'3" (4715 x 2810mm)
Bathroom 7'10" x 6'8" (2400 x 2030mm)
TOTAL AREA 778 sq ft (72.3 sq m)
Terrace 1 18'10" x 5'11" (5730 x 1791mm)
Terrace 2 28'11" x 3'5" (8810 x 1045mm)



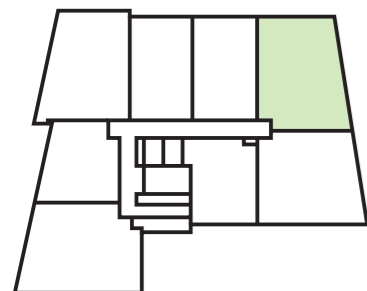
PLOT 475 (1), 483 (2), 491 (3), 499 (4), 503 (5), 507 (6), 511 (7), 515 (8), 519 (9)
Kitchen 13'6" x 6'0" (4125 x 1840mm)
Living/Dining 17'2" x 11'6" (5225 x 3518mm)
Bedroom 1 17'3" x 9'0" (5250 x 2750mm)
En suite 7'10" x 6'2" (2400 x 1890mm)
Bedroom 2 13'8" x 9'0" (4160 x 2750mm)
Bathroom 7'10" x 6'8" (2400 x 2030mm)
TOTAL AREA 806 sq ft (74.9 sq m)
Balcony 14'3" x 5'0" (4349 x 1519mm)



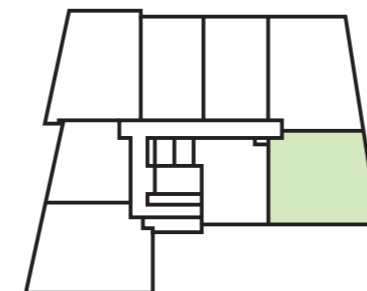
Syon Apartments
2 bedroom
apartment



PLOT 478 (1)
Kitchen 10'0" x 8'0" (3050 x 2450mm)
Living/Dining 18'0" x 10'7" (5475 x 3220mm)
Bedroom 1 16'7" x 10'0" (5050 x 3060mm)
En suite 7'10" x 6'3" (2400 x 1895mm)
Bedroom 2 15'9" x 9'0" (4799 x 2750mm)
Bathroom 7'10" x 6'8" (2400 x 2030mm)
TOTAL AREA 815 sq ft (75.7 sq m)
Terrace 24'7" x 4'9" (7500 x 1457mm)

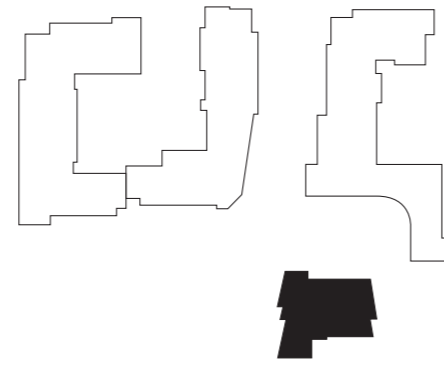


PLOT 479 (1)
Kitchen 9'11" x 8'0" (3020 x 2450mm)
Living/Dining 18'8" x 10'6" (5680 x 3200mm)
Bedroom 1 18'3" x 9'9" (5575 x 2975mm)
En suite 7'10" x 6'3" (2400 x 1895mm)
Bedroom 2 13'3" x 9'0" (4040 x 2750mm)
Bathroom 7'10" x 6'8" (2400 x 2030mm)
TOTAL AREA 809 sq ft (75.2 sq m)
Terrace 18'3" x 5'3" (5560 x 1610mm)



Syon Apartments

2 bedroom apartment



PLOT 481 (2), 489 (3), 497 (4),
501 (5), 505 (6), 509 (7),
513 (8), 517 (9), 521 (10)

Kitchen
10'0" x 6'3" (3042 x 1905mm)

Living/Dining
17'0" x 12'9" (5185 x 3898 mm)

Bedroom 1
15'8" x 9'0" (4780 x 2750mm)

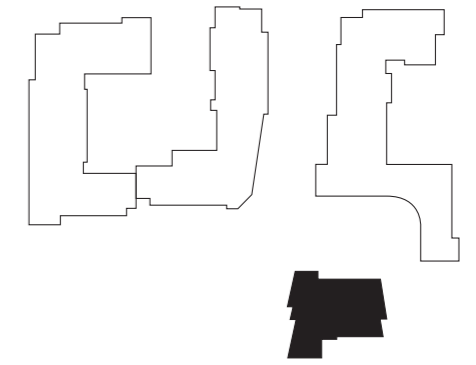
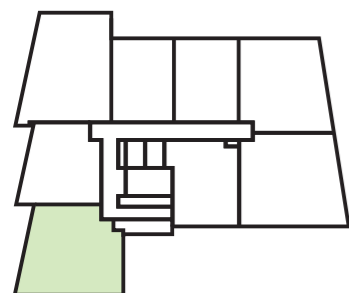
En suite
7'10" x 6'2" (2400 x 1890mm)

Bedroom 2
15'5" x 9'3" (4710 x 2810mm)

Bathroom
7'10" x 6'8" (2400 x 2030mm)

TOTAL AREA
778 sq ft (72.3 sq m)

Balcony
14'7" x 5'10" (4454 x 1772mm)



PLOT 486 (2)

Kitchen
10'0" x 8'0" (3050 x 2450mm)

Living/Dining
17'6" x 10'7" (5340 x 3220mm)

Bedroom 1
16'0" x 10'0" (4885 x 3060mm)

En suite
7'10" x 6'3" (2400 x 1895mm)

Bedroom 2
15'6" x 9'0" (4719 x 2750mm)

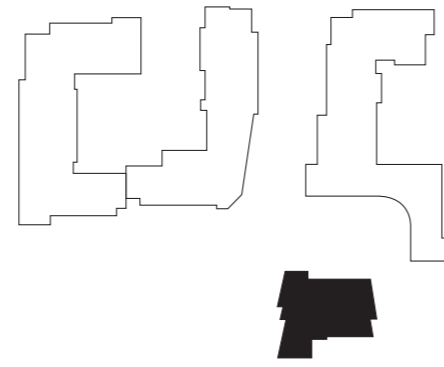
Bathroom
7'10" x 6'8" (2400 x 2030mm)

TOTAL AREA
812 sq ft (75.5 sq m)

Balcony
14'3" x 5'1" (4332 x 1550mm)



Syon Apartments
2 bedroom
apartment



PLOT 487 (2)

Kitchen
9'11" x 8'0" (3020 x 2450mm)

Living/Dining
18'8" x 10'6" (5701 x 3200mm)

Bedroom 1
17'11" x 9'9" (5459 x 2975mm)

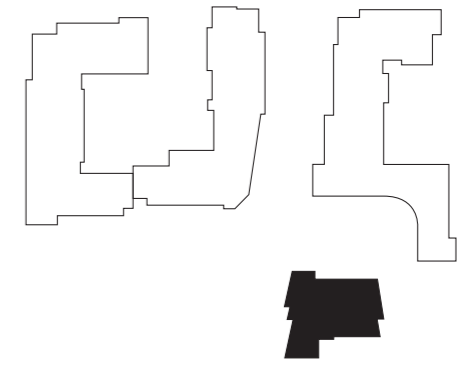
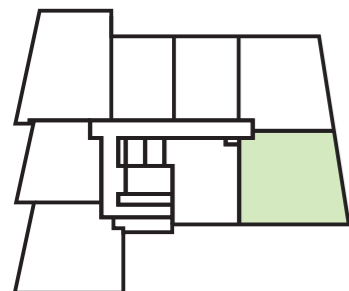
En suite
7'10" x 6'3" (2400 x 1895mm)

Bedroom 2
13'0" x 9'0" (3970 x 2750mm)

Bathroom
7'10" x 6'8" (2400 x 2030mm)

TOTAL AREA
810 sq ft (75.3 sq m)

Balcony
19'7" x 5'1" (5970 x 1550mm)



PLOT 494 (3)

Kitchen
10'0" x 8'0" (3045 x 2450mm)

Living/Dining
17'6" x 10'7" (5340 x 3215mm)

Bedroom 1
16'3" x 10'0" (4951 x 3060mm)

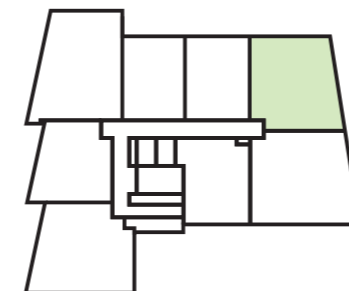
En suite
7'10" x 6'3" (2400 x 1895mm)

Bedroom 2
15'8" x 9'0" (4785 x 2750mm)

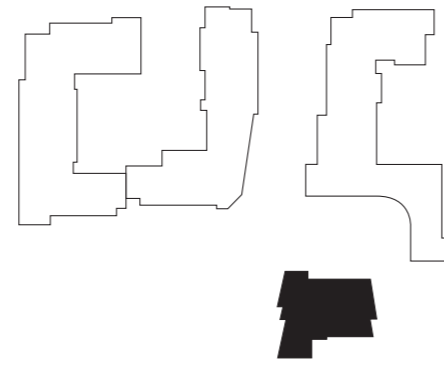
Bathroom
7'10" x 6'8" (2400 x 2030mm)

TOTAL AREA
816 sq ft (75.8 sq m)

Balcony
14'3" x 5'0" (4332 x 1536mm)



Syon Apartments
2 bedroom
apartment



PLOT 495 (3)

Kitchen
9'11" x 8'0" (3020 x 2450mm)

Living/Dining
18'7" x 10'6" (5656 x 3200mm)

Bedroom 1
18'0" x 9'9" (5485 x 2975mm)

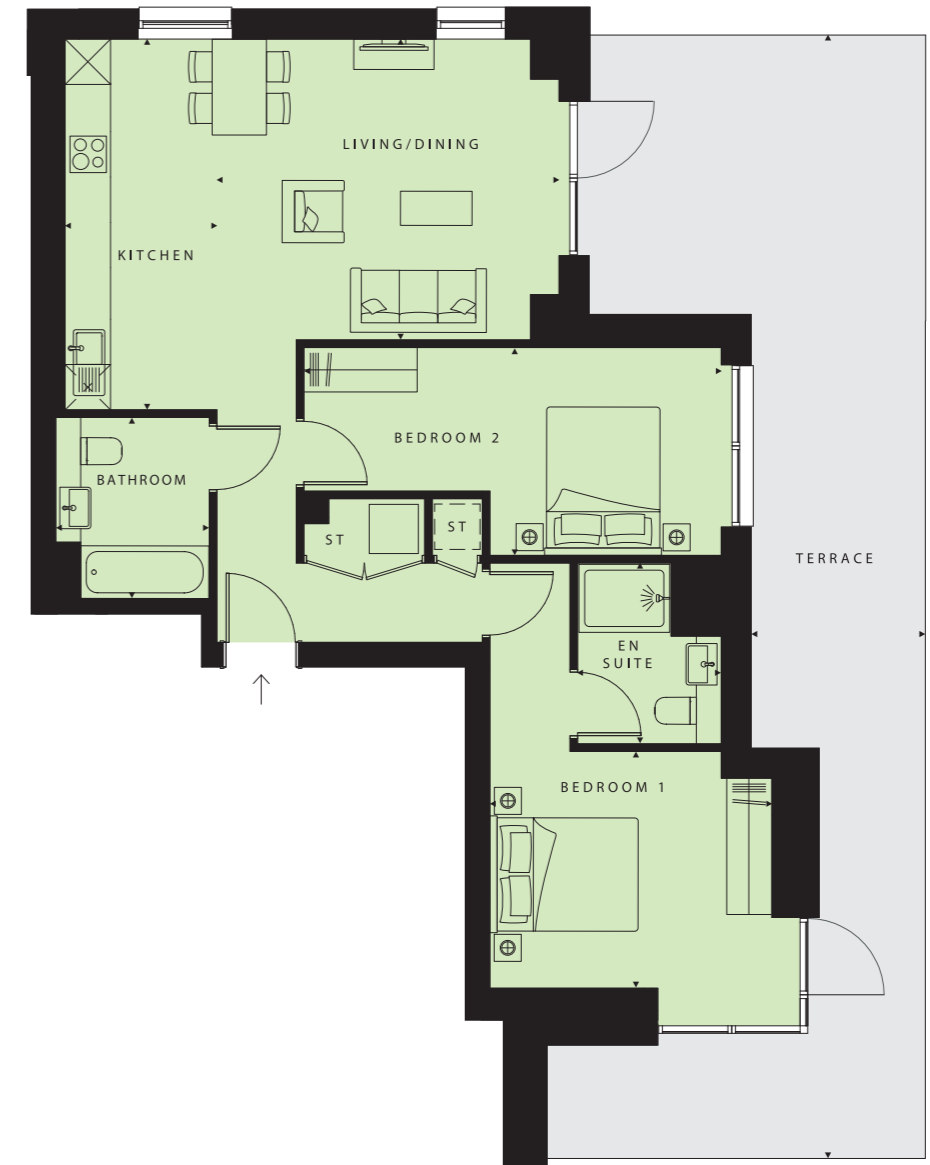
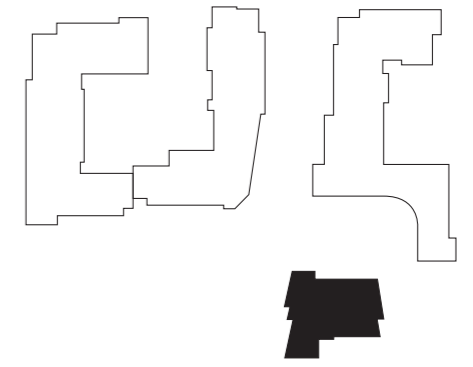
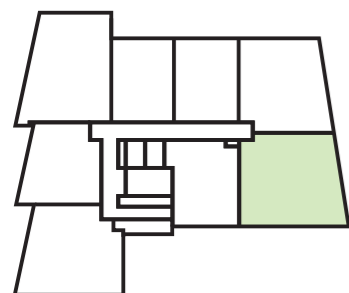
En suite
7'10" x 6'3" (2400 x 1895mm)

Bedroom 2
13'0" x 9'0" (3970 x 2750mm)

Bathroom
7'10" x 6'8" (2400 x 2030mm)

TOTAL AREA
810 sq ft (75.3 sq m)

Balcony
19'7" x 5'1" (5970 x 1550mm)



PLOT 500 (4)

Kitchen
16'1" x 6'7" (4905 x 2005mm)

Living/Dining
14'10" x 13'1" (4525 x 3980mm)

Bedroom 1
12'3" x 10'3" (3730 x 3132mm)

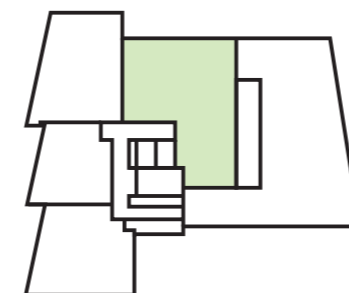
En suite
7'10" x 6'3" (2400 x 1900mm)

Bedroom 2
18'1" x 9'0" (5515 x 2750mm)

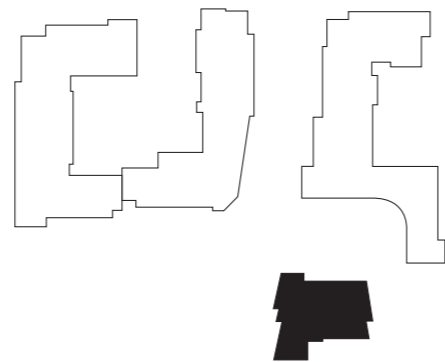
Bathroom
7'10" x 6'8" (2400 x 2030mm)

TOTAL AREA
812 sq ft (75.4 sq m)

Terrace
48'9" x 7'7" (14861 x 2301mm)



Syon Apartments
2 bedroom
apartment



PLOT 504 (5), 508 (6), 512 (7),
516 (8), 520 (9)

Kitchen
16'1" x 6'7" (4905 x 2005mm)

Living/Dining
14'10" x 13'1" (4525 x 3980mm)

Bedroom 1
12'3" x 10'3" (3730 x 3132mm)

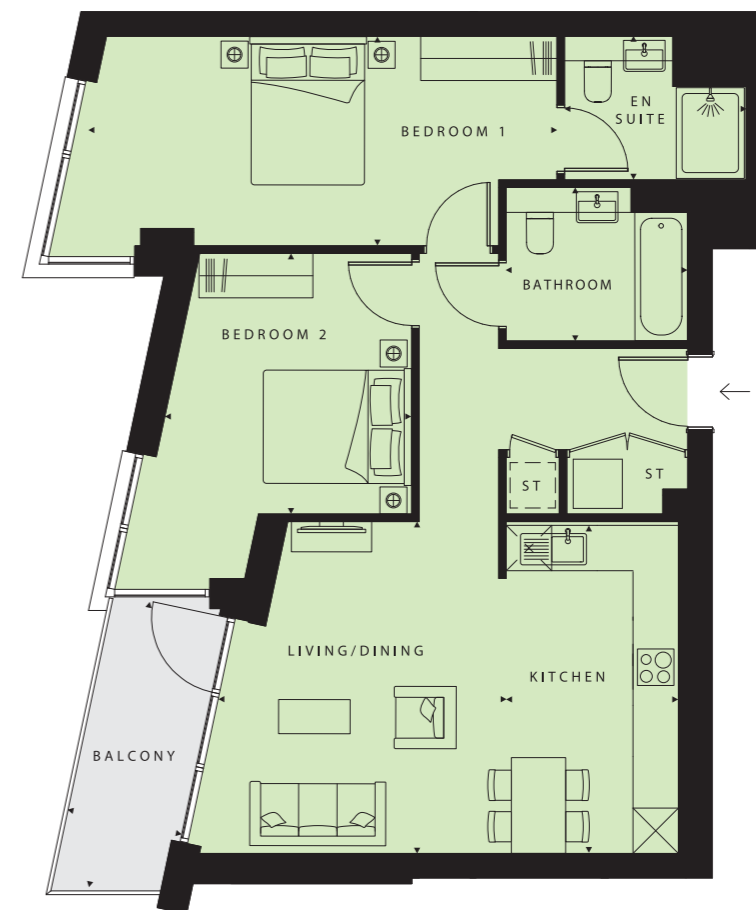
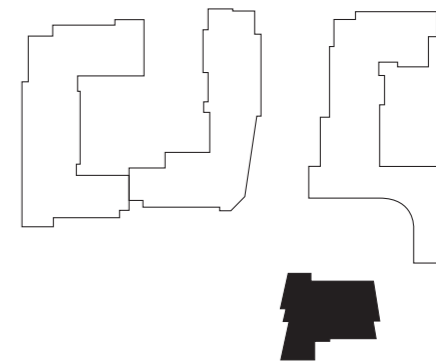
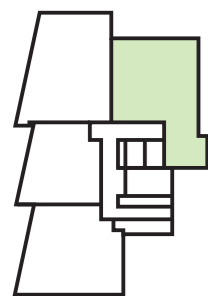
En suite
7'10" x 6'3" (2400 x 1900mm)

Bedroom 2
18'1" x 9'0" (5515 x 2750mm)

Bathroom
7'10" x 6'8" (2400 x 2030mm)

TOTAL AREA
812 sq ft (75.4 sq m)

Balcony
12'6" x 5'2" (3813 x 1573mm)



PLOT 522 (10)

Kitchen
14'3" x 7'6" (4341 x 2275mm)

Living/Dining
14'5" x 12'5" (4390 x 3784mm)

Bedroom 1
20'4" x 9'0" (6190 x 2750mm)

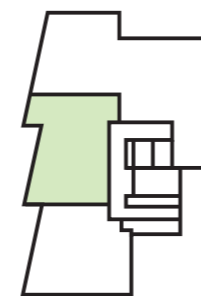
En suite
7'10" x 6'3" (2400 x 1900mm)

Bedroom 2
11'4" x 10'8" (3448 x 3260mm)

Bathroom
7'10" x 6'8" (2400 x 2030mm)

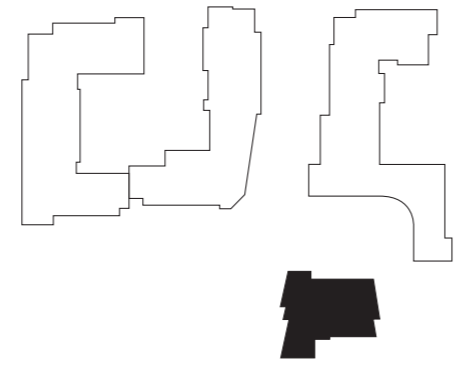
TOTAL AREA
796 sq ft (74.0 sq m)

Balcony
12'8" x 5'1" (3850 x 1537mm)

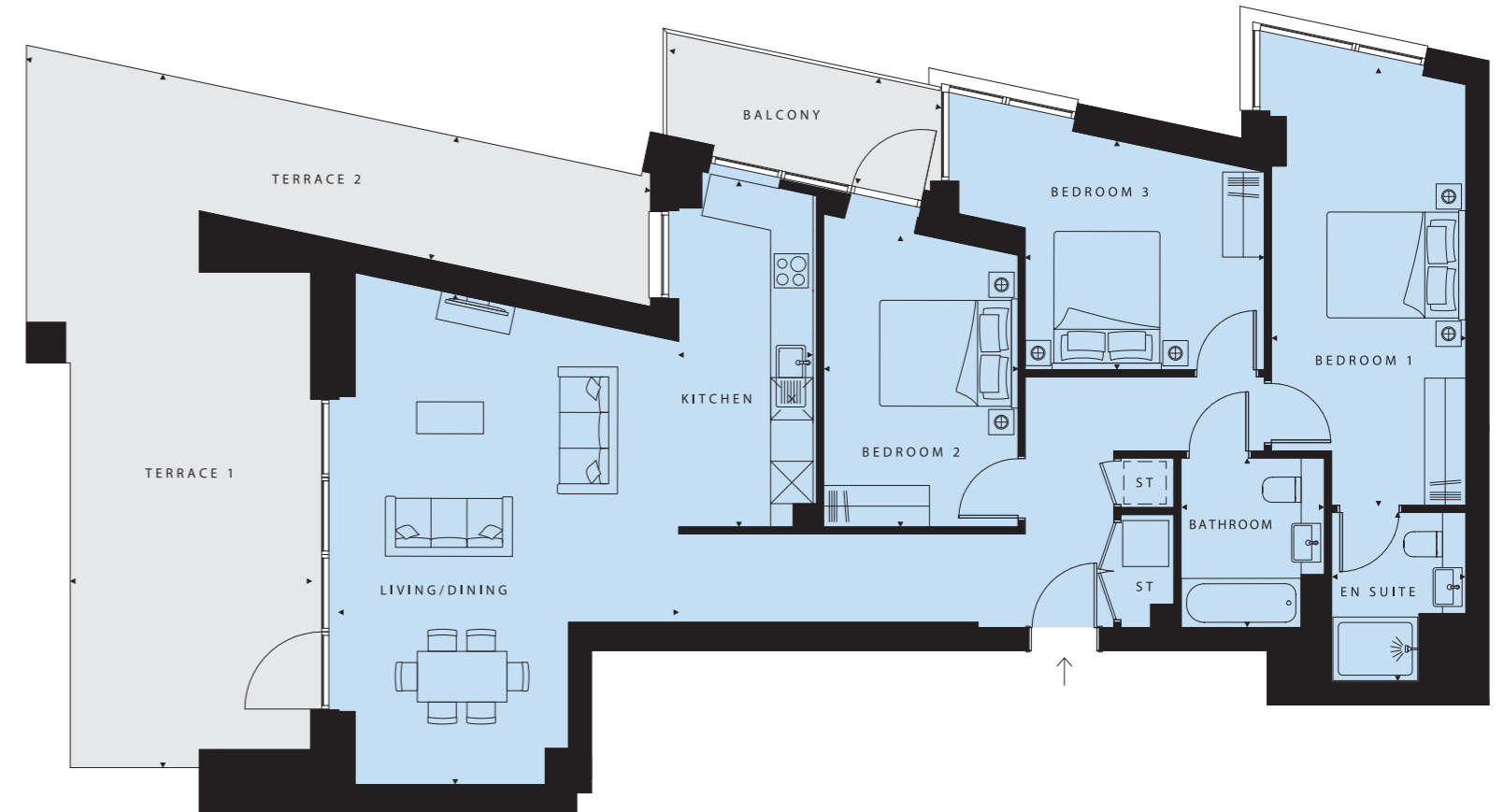
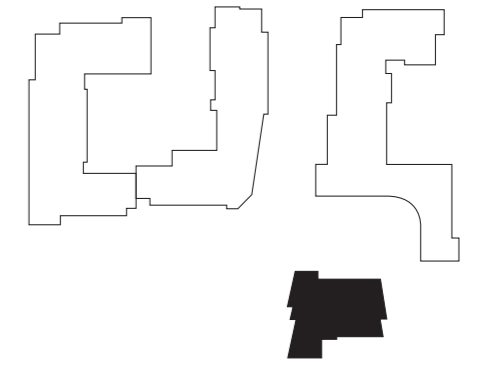
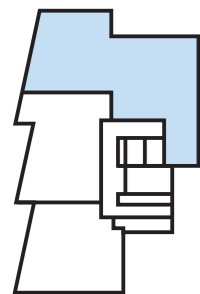


Syon Apartments

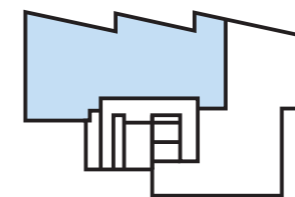
3 bedroom apartment



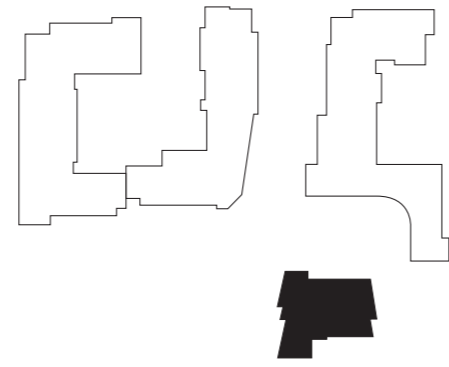
PLOT 523 (10), 525 (11), 527 (12)	Bedroom 3 13'9" x 9'0" (4185 x 2750mm)
Kitchen 9'4" x 9'3" (2842 x 2825mm)	Bathroom 7'10" x 6'8" (2400 x 2030mm)
Living/Dining 23'4" x 18'9" (7105 x 5705mm)	TOTAL AREA 1254 sq ft (116.5 sq m)
Bedroom 1 17'6" x 15'5" (5342 x 4700mm)	Balcony 1 14'0" x 4'5" (4275 x 1347mm)
En suite 8'4" x 8'4" (2535 x 2530mm)	Balcony 2 12'6" x 5'2" (3812 x 1572mm)
Bedroom 2 13'4" x 11'1" (4055 x 3380mm)	Terrace 13'0" x 8'5" (3972 x 2572mm)



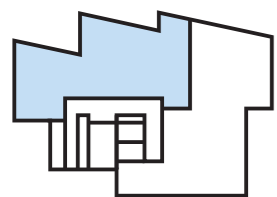
PLOT 524 (11)	
Kitchen 16'1" x 6'3" (4895 x 1893mm)	Bathroom 7'10" x 6'8" (2400 x 2030mm)
Living/Dining 22'10" x 15'9" (6953 x 4805mm)	TOTAL AREA 1120 sq ft (104.1 sq m)
Bedroom 1 20'4" x 9'0" (6190 x 2750mm)	Balcony 12'11" x 5'0" (3925 x 1524mm)
En suite 7'10" x 6'3" (2400 x 1900mm)	Terrace 1 32'2" x 11'3" (9813 x 3418mm)
Bedroom 2 13'6" x 9'0" (4125 x 2750mm)	Terrace 2 29'7" x 5'11" (9017 x 1799mm)
Bedroom 3 11'1" x 10'8" (3385 x 3240mm)	



Syon Apartments
3 bedroom
apartment



PLOT 526 (12)	
Kitchen 15'11" x 6'5" (4860 x 1950mm)	Bedroom 3 11'1" x 10'8" (3385 x 3240mm)
Living/Dining 22'9" x 16'3" (6943 x 4948mm)	Bathroom 7'11" x 6'8" (2420 x 2030mm)
Bedroom 1 20'4" x 9'0" (6190 x 2750mm)	TOTAL AREA 1120 sq ft (104.1 sq m)
En suite 7'10" x 6'3" (2400 x 1900mm)	Balcony 1 22'1" x 4'11" (6735 x 1503mm)
Bedroom 2 13'6" x 9'0" (4125 x 2750mm)	Balcony 2 12'10" x 5'0" (3903 x 1524mm)



Specification

Kitchen

Individually designed German kitchens with soft-close doors and drawers

Matching worktops and full-height upstands

Under-cabinet lighting

Stainless steel single bowl sink and chrome tap to one-bedroom apartments

Stainless steel 1½ bowl sink and chrome tap to two and three-bedroom apartments

Fully integrated Zanussi appliances including single oven, ceramic hob, dishwasher and fridge freezer

Electrolux hood

Bathroom

Ideal Standard brassware

White semi-recessed wash hand basin

Back-to-wall WC pan with soft-close WC seat

Concealed cistern and dual flushplate

White bath

Chrome-hinged bathscreen

Heated towel rail

Ceramic wall tiles

En suite

Ideal Standard brassware

White semi-recessed wash hand basin

Back to wall WC pan with softclose WC seat

Concealed cistern and dual flushplate

White shower tray

Chrome shower doors

Heated towel rail

Shaver socket

Ceramic wall tiles

General

BT TV/Sky+/FM connectivity to living area

Downlighters to kitchen and bathrooms

Ceiling pendants to hallway, living area and bedrooms

Fibre broadband connectivity

Flooring finishes available at an additional cost – please speak to a Sales Adviser for more information

Bedrooms

BT TV/FM connectivity

Communal areas and facilities

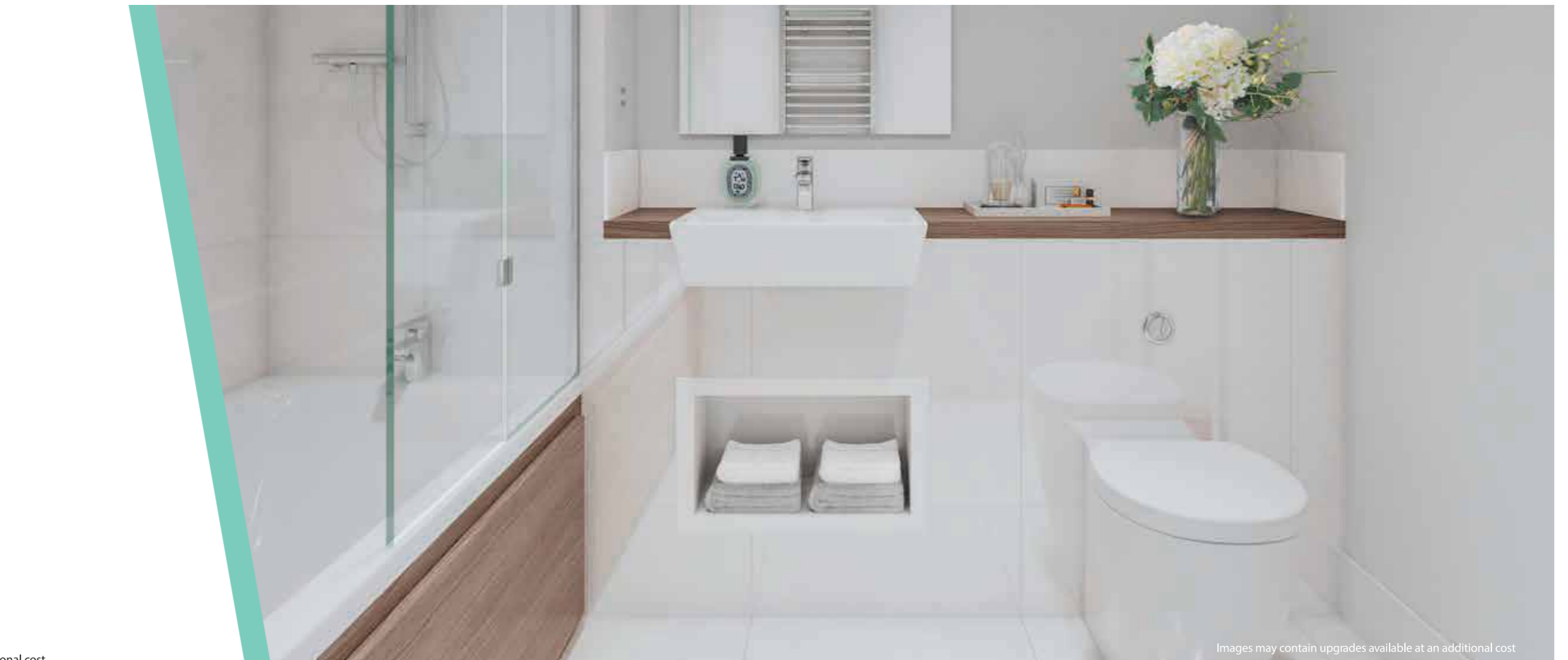
CCTV security system coverage across all residential buildings and entrances

Car parking available*

Lifts to all floors

Interior-designed entrance foyer

Shops, restaurants and a Cineworld within development (from 2020)



* Car parking will be available from autumn 2019 for selected two and three-bedroom homes at an additional cost

Images may contain upgrades available at an additional cost



TURYAP[®]
UK