

# HORNSEY PARK PLACE



**TURYAP**<sup>®</sup>  
UK

08



Computer-generated image of Hornsey Park Place and the podium garden is indicative only and subject to change

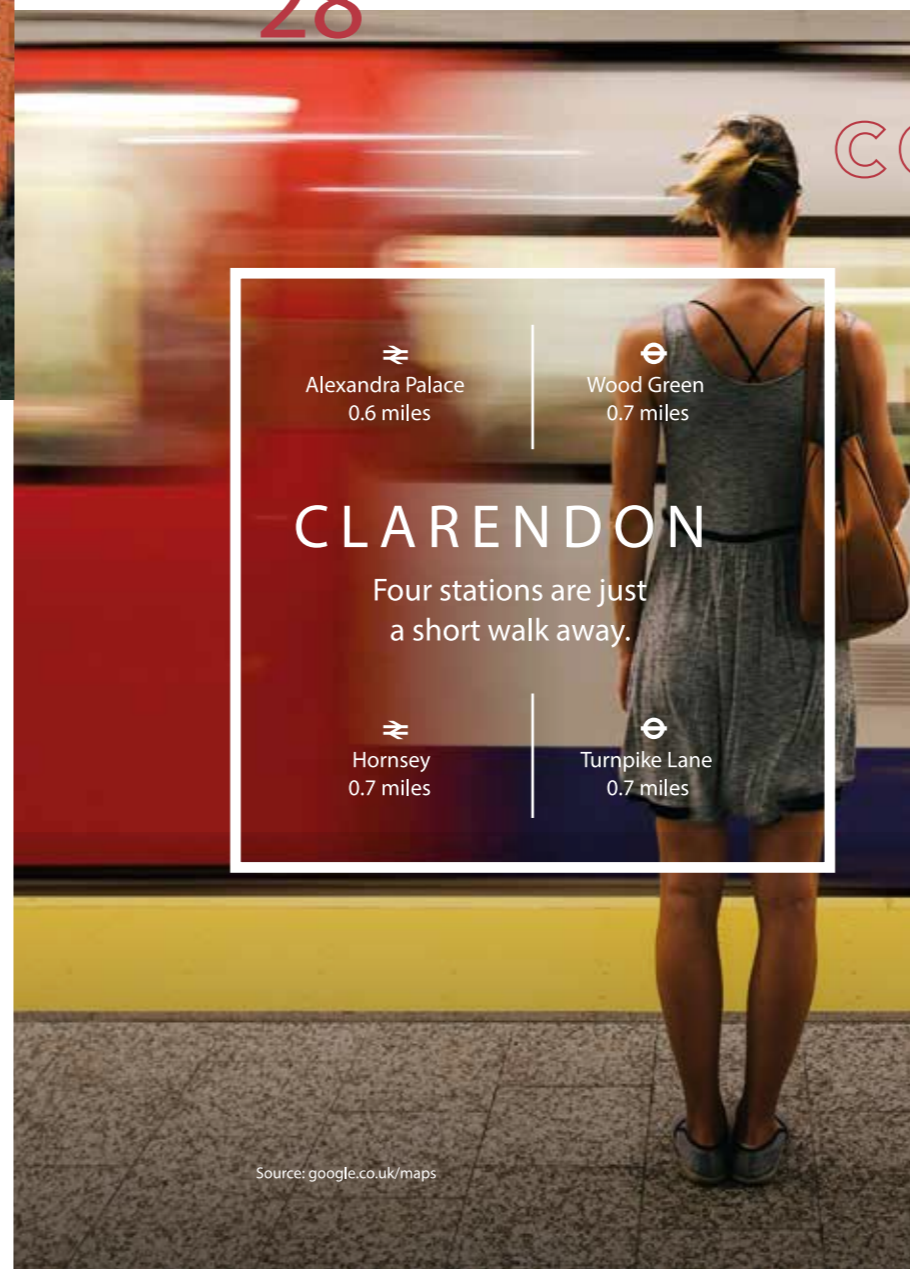
WELCOME TO CLARENDON, A 12 ACRE NEW CITY VILLAGE



Computer-generated image of Hornsey Park is indicative only and subject to planning

18

28



CONTENTS

Alexandra Palace 0.6 miles | Wood Green 0.7 miles

**CLARENDON**

Four stations are just a short walk away.

Hornsey 0.7 miles | Turnpike Lane 0.7 miles

Source: google.co.uk/maps

40



Computer-generated image of concierge wall detail

- 04 — 13  
A new city village  
A vibrant neighbourhood with a creative mind and a green heart.
- 14 — 21  
A place to belong  
A city village retreat for residents to relax and enjoy.
- 22 — 29  
Well connected  
Four stations just a short walk away with connections to the best of London's cultural and leisure destinations.

- 30 — 31  
Education  
Easy access to world-class colleges and universities.
- 32 — 39  
Meet the Neighbours  
Innovative shops, eateries, art and fitness spaces.
- 40 — 43  
Better Living  
Residents' facilities designed to make life better.
- 44 — 55  
A place to call home  
Comfort with contemporary finishes.
- 56 — 59  
Inside your home  
Sophisticated materials and colour palettes.
- 60 — 61  
Site Plan  
A new city village.
- 62 — 91  
Floorplates  
Find your perfect home.
- 92 — 95  
St William and the Berkeley Group  
Creating places where people belong.
- 96  
Contact details  
Come and see us.

# A NEW CITY VILLAGE



The City

London Eye

West End

Bond Street

Finsbury Park

Crouch End

Hornsey

Turnpike Lane

**CLARENDON**

Muswell Hill

Alexandra Park

Alexandra Palace

Wood Green

Alexandra Palace

### THE ARCHITECT'S VIEW

“Clarendon is a fascinating project for Panter Hudspith – offering us the opportunity to transform a brownfield site into a thriving and cohesive neighbourhood, creating a new urban village in North London.

The scheme will establish a diverse place with nature and landscape at its heart, where collections of homes are set within a network of sociable public and private spaces - numerous pocket parks, Hornsey Park, Moselle Walk and a vibrant

public square come together to form a richly landscaped environment knitted into its context.

Both the layout of the scheme and the architecture have been shaped and inspired by the site's historic use, the Moselle River and the characterful detailing of the brickwork in the nearby conservation area Noel Park. When complete, the extensive work space facilities will help to nurture diverse young businesses, contributing towards a sustainable and balanced community for new and existing residents. These

spaces have been carefully integrated into the masterplan, alongside shops, bars and restaurants, flexible events spaces, crèche and gym to create a truly successful new village.

Clarendon has the combination of being a distinct location in its own right, offering easy access to great transport links whilst being just a short walk to the glorious parkland at Alexandra Palace.”

Gareth Hunter,  
Panter Hudspith Architects

Hornsey Park Place

GREEN SPACES, WATER FEATURES AND A VIBRANT PUBLIC SQUARE COME TOGETHER TO FORM A RICHLY LANDSCAPED ENVIRONMENT



Computer-generated image of Hornsey Park Place and the podium garden is indicative only and subject to change

HORNSEY PARK PLACE OCCUPIES A CENTRAL POSITION IN CLARENDON. OVERLOOKING HORNSEY PARK, WITH SOME FANTASTIC ELEVATED VIEWS OF ALEXANDRA PARK AND CENTRAL LONDON.

There is a choice of 169 suites, one, two and three-bedroom apartments available with a range of three interior design styles to choose from - 'Gallery', 'Park' and 'Town Square'. Each of these styles offers a unique expression of the tones and materials of the area's industrial heritage and new parkland setting.

The exterior features of Hornsey Park Place are a complementary coloured brick facade, with metal railed balconies. The building's crisp corners integrate recessed balconies providing discreet

private outside space. Residents will enjoy exclusive use of a spacious south/west facing podium garden, whilst being adjacent to the western end of Hornsey Park with its beautiful trees and water feature.

Clarendon is ideally located to explore the local area and beyond. A short stroll through the park leads up to Wood Green's high street, and the nearest train and tube stations are just a short walk away.

Hornsey Park Place is the first opportunity to enjoy living at Clarendon, a brand new city village with a park at its heart.

A NEW CITY VILLAGE

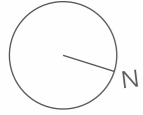
London is a city of exciting interconnected villages. London's newest city village Clarendon is set to become a vibrant neighbourhood for creative opportunities among green pockets.

Clarendon's architecture is a contemporary interpretation of London's classic brick homes, incorporating yellow and red brick and generous elongated windows.

Elegantly simple balconies, afford private spaces to enjoy. Architecturally designed brick detailing adds texture and visual coherence between buildings.



Computer-generated image of the 24-hour concierge and café at Hornsey Park Place, indicative only and subject to change



01

**Hornsey Park Place**  
A collection of 169 suites, 1, 2 and 3-bedroom apartments.

02

**Hornsey Park**  
Lawns framed by orchard style planting and gentle flowing water features.

03

**Hornsey Park**  
Spacious lawns with a central water feature inspired by the gas holder heritage.

04

**Hornsey Park**  
The largest part of the park with timber style play area set within evergreen woodland planting.

05

**Moselle Walk**  
An informal space with wilder planting designed to connect Hornsey Park with Brook Road.

06

**Public Square**  
A new town square with shops, bars and restaurants and space for events and farmers markets.

07

**Pocket parks**  
Parklets with thoughtful planting and informal seating.

For illustration purposes only, not to scale



# HORNSEY PARK

A VERDANT ONE ACRE  
PARK WEAVES THROUGH  
THE HEART OF CLARENDON  
PROVIDING GENEROUS  
GREEN SPACES TO RELAX,  
PLAY AND ENJOY.



Computer-generated image of the orchard style planting at Hornsey Park, indicative only and subject to change





THE LANDSCAPE VISION

“We wanted Clarendon residents to hear birdsong and be able to pick an apple from a tree. People will feel enveloped by the rich planting that changes with the seasons. We wanted to make it easy for people to meet up with their neighbours, and provide a tempting variety of places for play and exercise.

Our landscape-led vision makes strong connections to the authentic memory of the site and to nature, from nooks of green to new habitat for the song thrush, with planting informed by local ancient woodland.

Clarendon will be a lovely place to enjoy a lazy Sunday coffee in the mid-morning sun, or a drink at dusk by the water's edge.”

Andrew Harland,  
LDA Design, Landscape Architects

PEOPLE WILL  
FEEL ENVELOPED  
BY THE RICH  
PLANTING THAT  
CHANGES WITH  
THE SEASONS.

St William, part of the Berkeley Group, is known for rejuvenating redundant land to create places where people desire to live. Clarendon features a rich array of multiple parklets, play areas and walks with a centrepiece park. Imaginative planting includes apple trees and diverse planting found in the communal gardens.

The green spaces at Clarendon, designed by LDA Design, evolve and change with the seasons. The parkland is dotted with verdant ferns, colourful wildflowers and shady trees interspersed with winding paths.





The design of Hornsey Park has drawn on the history and culture of the area to create a space that is vibrant and sociable. Part of the former gas holder has been retained to create a beautiful water feature with natural planting and walkways that connect to the decked seating area.

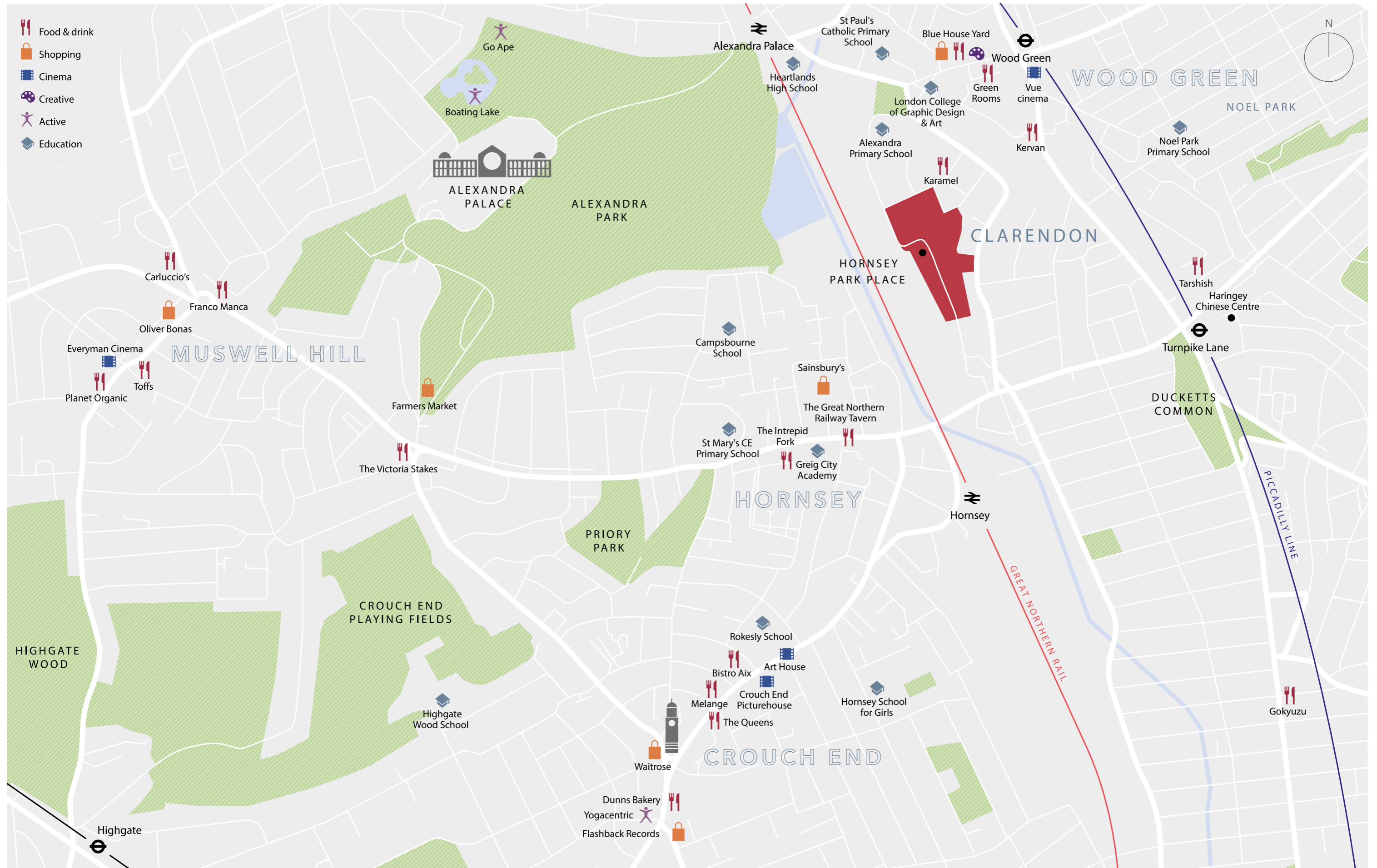
Computer-generated image of Hornsey Park is indicative only and subject to planning



RESIDENTS AT HORNSEY PARK PLACE WILL HAVE ACCESS TO THE PODIUM, A PRIVATE AND SPACIOUS SOUTH/WEST-FACING GARDEN DESIGNED FOR RESIDENTS TO UNWIND AND RELAX.

Computer-generated image of Podium garden at Hornsey Park Place, indicative only and subject to change.

Wi-Fi available in the podium gardens



# NEXT TO 196 ACRES OF PARKLAND



Computer-generated image of Hornsey Park Place from the 11th floor overlooking Alexandra Park and Palace, indicative only and subject to change



# LONDON CALLING

The best of London's cultural and leisure destinations are within easy reach, from Old Street, Islington and King's Cross to Moorgate in the heart of the City's financial district. All less than 20 minutes away.

The City of London



01



02



03



04

- 01 Granary Square
- 02 Google headquarters, King's Cross
- 03 King's Cross railway station
- 04 The Barbican Centre
- 05 Carluccio's restaurant, Upper Street, Islington
- 06 Boxpark, Shoreditch

King's Cross has been transformed in the past five years, creating a new home for Central St Martins Fashion and Art College and a new cultural centre at King's Place. Surrounding the rejuvenated station are places to relax and discover, like the chic stores of Coal Drops Yard and great restaurants and bars around Granary Square. King's Cross St Pancras Station also boasts rapid links to continental Europe via Eurostar, and high-speed services to destinations across the UK.

From its gritty beginnings, Old Street has become the home of emerging talent in fashion, technology, design, entertainment, food and drink. Cocktail bars are hidden

down side streets and secret staircases, while luxurious bistros, global restaurants and boutiques full of cutting-edge fashion and design line the streets.

From Highbury and Islington, there are green spaces at Highbury Fields and along the New River Walk, or gigs at the famed Union Chapel, while independent stores and restaurants sit alongside bars and theatres. Meanwhile, a 20 minute train ride from Hornsey takes you to Moorgate which offers direct access to the heart of the City of London, as well as the iconic Barbican Cultural Centre, with its innovative theatre, music, art and dance programmes.





05



06





  
 Alexandra Palace  
 0.6 miles

  
 Wood Green  
 0.7 miles

# CLARENDON

Four stations are just  
a short walk away.

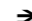



  
 Hornsey  
 0.7 miles

  
 Turnpike Lane  
 0.7 miles



### Walk

From Hornsey Park Place

- Alexandra Park  
10 mins
- |
- 
- Hornsey  
12 mins
- |
- 
- Alexandra Palace  
12 mins
- |
- Sainsbury's Hornsey  
13 mins
- |
- 
- Wood Green  
14 mins
- |
- 
- Turnpike Lane  
14 mins



### Bike

From Hornsey Park Place

- Alexandra Park  
3 mins
- |
- Green Lanes  
4 mins
- |
- Crouch End High Street  
9 mins
- |
- Alexandra Palace  
12 mins
- |
- Muswell Hill Broadway  
14 mins
- |
- Highgate Woods  
18 mins



### Road

From Hornsey Park Place

- Green Lanes  
5 mins
- |
- Crouch End High Street  
7 mins
- |
- Muswell Hill Broadway  
10 mins
- |
- Highgate Woods  
11 mins
- |
- Camden Town  
29 mins



### Tube


Piccadilly Line  
from Wood Green

-   
King's Cross St Pancras  
14 mins
- |
- Covent Garden  
21 mins
- |
- Leicester Square  
22 mins
- |
- 
- Farringdon  
23 mins
- |
- Knightsbridge  
28 mins
- |
- 
- Paddington  
31 mins



### Rail

Rail from  
Hornsey

- Finsbury Park  
4 mins
- |
- Highbury & Islington  
10 mins
- |
-   
King's Cross St Pancras  
16 mins
- |
- Old Street  
16 mins
- |
- Moorgate  
20 mins



### Air

By road from  
Hornsey Park Place

- City Airport  
46 mins
- |
- London Luton  
52 mins
- |
- Heathrow  
56 mins
- |
- London Stansted  
57 mins

Source: [google.co.uk/maps](https://www.google.co.uk/maps), [tfl.gov.uk](https://www.tfl.gov.uk) and [nationalrail.co.uk](https://www.nationalrail.co.uk)





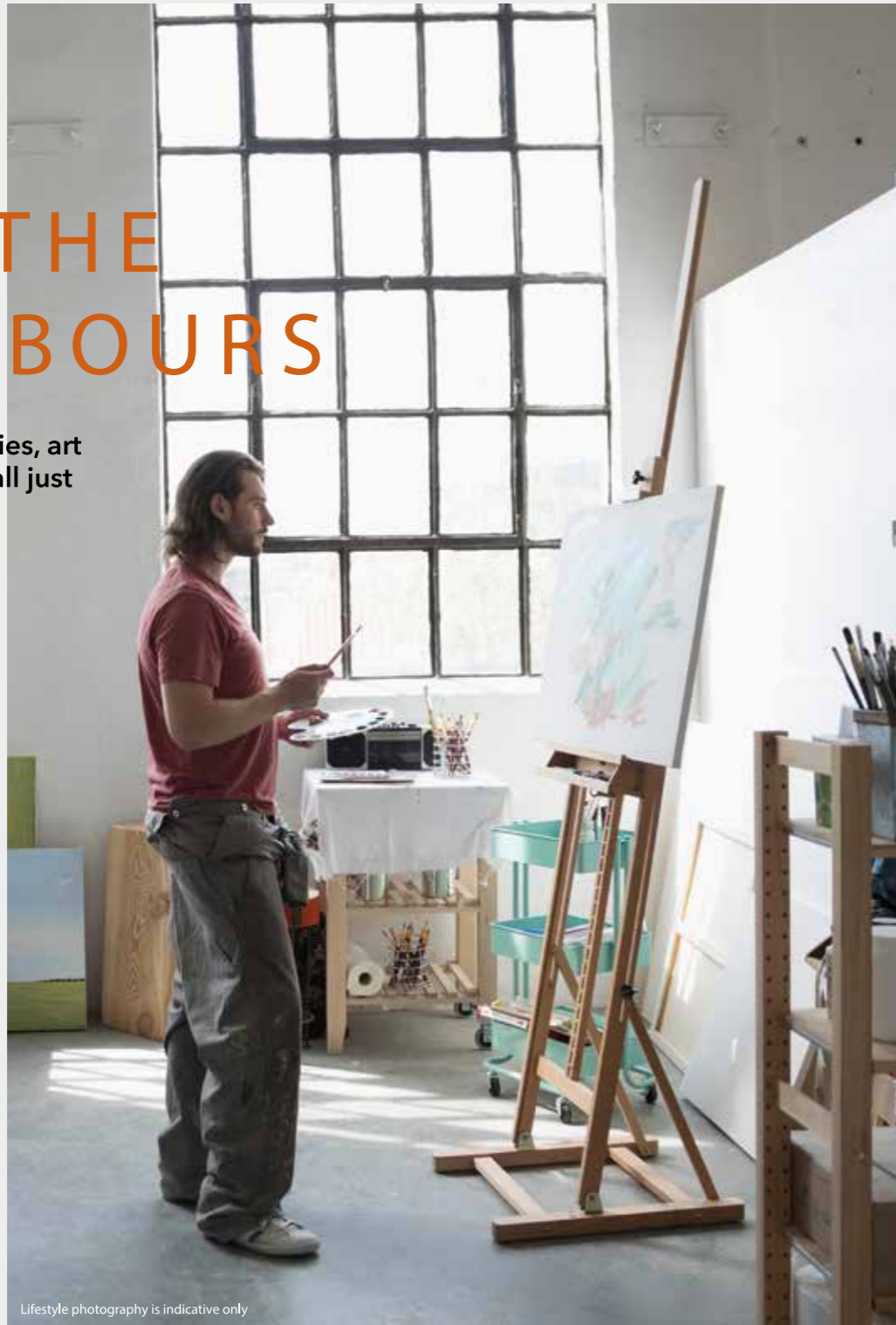
- 01 Studio spaces for artists
- 02 Street Feast
- 03 Gymnasium
- 04 Goodwin & Goodwin sign makers

# MEET THE NEIGHBOURS

Innovative shops, eateries, art and fitness spaces are all just a few minutes away.

Masterminded by social entrepreneur Nick Hartwright, Clarendon Yards is North London's newest hub for culture, creativity and flavour.

Hartwright's Mill Co. helps emerging creative businesses to grow by providing affordable places for them to build their futures. Across London, Mill Co. operates 200,000 sq ft of workspace, studio and hospitality space, providing a springboard for over 150 creative businesses. Hartwright founded the Green Rooms, a hotel in Wood Green for people working in the arts, whilst elsewhere in the city he has transformed an underused Dalston community centre into a home for art and culture.



Lifestyle photography is indicative only

01



02



04



Lifestyle photography is indicative only

03

Working with St William, Mill Co. is transforming part of the former industrial land of Clarendon into a centre for innovation and culture. Clarendon Yards plans to deliver businesses such as a street food market, open-air bar, microbrewery, allotments for local residents, events and performance spaces, plus over 40,000 sq ft of maker spaces, workshops and studios for creative start-ups.

Some of the businesses already in discussion to take space at Clarendon include art development charity College Arts and CrossFit. In addition, already in situ are creative sign-makers Goodwin and Goodwin and independent book distributors Turnaround.

Clarendon Yards with its carefully chosen range of bars, restaurants, fitness and culture spaces aims to offer great experiences to everyone.



01



03



02



04

## CROUCH END

A leafy neighbourhood that's refined without being pretentious, much loved by families, artists and professionals. Independent restaurants and cafés abound, along with local festivals, an arthouse cinema, delicatessens, specialist food shops and galleries.

- 01 Clock Tower
- 02 Gail's Bakery
- 03 Crouch End Picturehouse
- 04 Haberdashery Café



01



03

## HORNSEY

Located just 12 minutes walk from Hornsey Park Place, Hornsey is an up-and-coming Victorian suburb with shops, bars and restaurants for every taste. From florists such as Bloomers and vintage stores such as Mishka, there is an array of neighbourhood eateries, cosy coffee shops and great pubs in this popular local suburb.

- 01 Alexandra Park
- 02 Dog Gone Fabulous
- 03 Great Northern Railway Tavern
- 04 The Intrepid Fork café



02



04



## ALEXANDRA PALACE

An iconic palace with expansive views over London and surrounded by 196 acres of parkland. Home to famous firework displays, must-see gigs and fascinating events, the beloved 'Ally Pally' has been providing the best in leisure and entertainment to Londoners for 155 years.

A £26.7M RESTORATION PROGRAMME IS BREATHING NEW LIFE INTO THIS ICONIC PALACE.





01



02



03

## MUSWELL HILL

A cosy enclave above the city, Muswell Hill has many charms and spectacular views towards the City. Its village atmosphere is popular with families and informs every specialist store, independent book shop, local restaurant and craft beer pub. Muswell Hill also has plenty of green spaces perfect for a quiet stroll.

- 01 Everyman Cinema
- 02 Muswell Hill Bookshop
- 03 Highgate Woods

## WOOD GREEN

Home to one of the UK's longest high streets, Wood Green offers popular shops, restaurants and entertainment. Multiplex cinemas, a mall packed with favourite brands, a host of spacious gastropubs make this a down-to-earth area for quick errands or casual outings.

Over the next 10 years Wood Green is undergoing some exciting changes including improvements to the shopping mall and new cycle routes.

- 01 Basketball court
- 02 Kervan Sofrasi Restaurant
- 03 Tarshish Restaurant & Bar
- 04 The Green Rooms



01



03



02



04

# BETTER LIVING

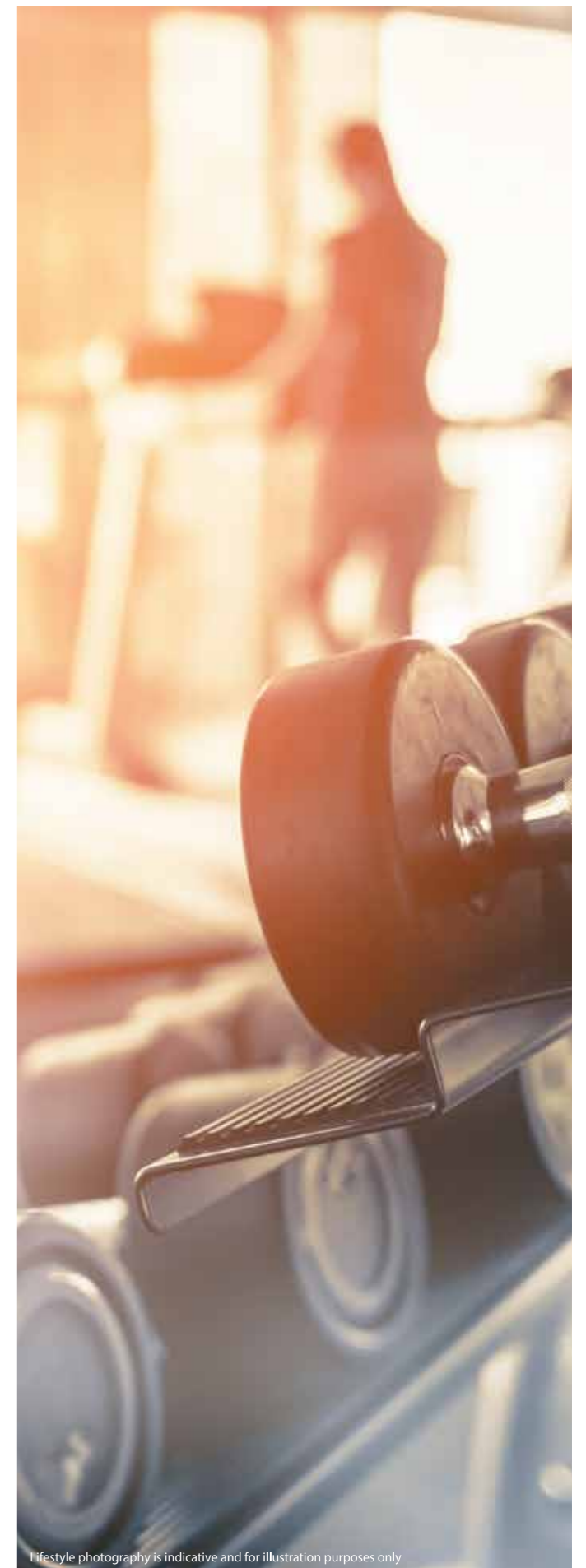
Residents' facilities at Clarendon are designed to make life easier and residents at Hornsey Park Place are perfectly positioned to enjoy the superb range of facilities on offer. The 24-hour concierge service provides answers for queries from the unusual to the everyday, while the residents' lounge offers flexible space to relax, work or entertain.

Well-being is fundamental to life at Clarendon, from the wealth of green spaces in the public parks and private gardens to the fitness offerings in future phases. These will include gyms, residents' pool and spa facilities.



THE LOBBY AREA IS INSPIRED BY THE GAS HOLDERS THAT ONCE OCCUPIED THE SITE, WITH A METAL STRUCTURE THAT FRAMES THE RECEPTION.

Some facilities will not be available until later phases. Computer-generated image and lifestyle photography is indicative only and subject to change



Lifestyle photography is indicative and for illustration purposes only



Some facilities will not be available until later phases.  
Lifestyle photography is indicative only



Some facilities will not be available until later phases.  
Lifestyle photography of swimming pool is indicative only.

REJUVENATING  
HEALTH AND  
WELLNESS  
FACILITIES

While the brick exterior echoes traditional architecture, the interiors are focused on modern living. Comfort and efficiency blend with luxury touches such as geometric tiling, bespoke kitchen ironmongery and sleek kitchen cabinets. Thoughtful design has created airy bedrooms, relaxing bathrooms and social living and dining spaces, while some apartments enjoy dual aspect, with views over gardens, parklands and London's cityscape.











Computer-generated image of the Park kitchen is indicative only and subject to change. Specification and colour choices are subject to the build stage

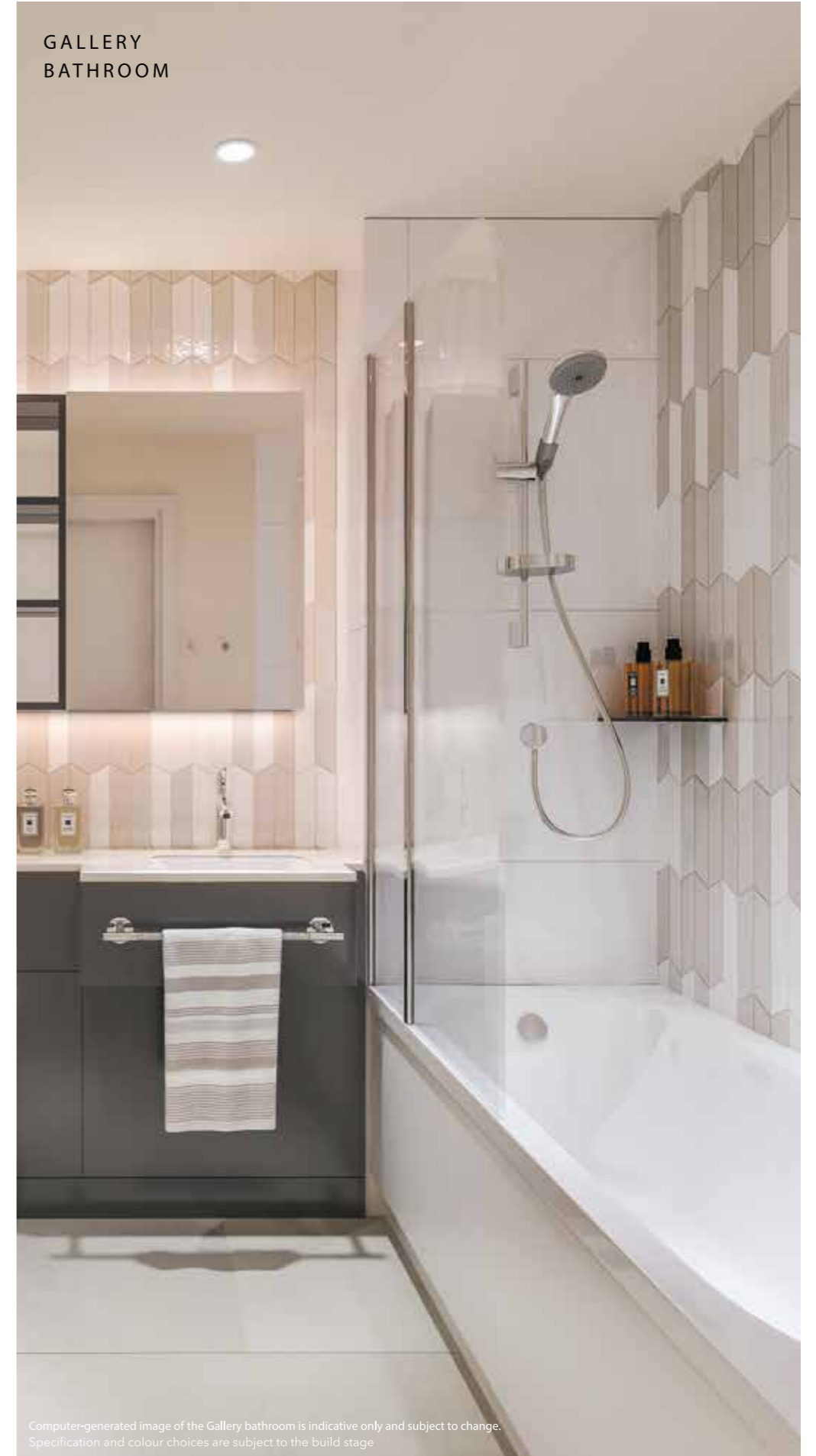


GALLERY  
KITCHEN



Computer-generated image of the Gallery kitchen is indicative only and subject to change. Specification and colour choices are subject to the build stage

GALLERY  
BATHROOM



Computer-generated image of the Gallery bathroom is indicative only and subject to change. Specification and colour choices are subject to the build stage



Computer-generated image is indicative only and subject to change

01



Computer-generated image is indicative only and subject to change

02

# SPECIFICATION

## KITCHEN\*

Excellent specification with interior designed fitted kitchens available in three palette options\*\*

Bespoke cupboard handles

Utensil hanging rail

Feature lighting to underside of wall units and tiled splash back between worktop and wall units

- Fully integrated appliances including:
- Single oven with black glass finish (to 1 and 2 bedroom apartments only)
  - Microwave oven with black glass finish (to 1 and 2 bedroom apartments only)
  - Combi oven-microwave (to suites)

- Touch control induction hob with 4 zones
- Full height fridge/freezer and dishwasher
- Fully integrated extractor hood

Freestanding washer/dryer located in utility cupboard

Composite stone worktops with undermounted 1.5 bowl stainless steel sink (1 bowl sink to suites) and Hansgrohe monobloc tap

Bespoke joinery to kitchen with feature shelving units

Breakfast bar/island unit and pendant lights available as customer upgrade\*

- 01 Suite living area
- 02 Two Bed Master Bedroom



01



02



03

- 01 Balcony
- 02 Timber effect flooring
- 03 Gallery bathroom wall tiles
- 04 Park bathroom

Computer-generated images are indicative only and subject to change

**BATHROOM\***

Tiled floor and wet walls, available in three palette options\*\*

Feature tile to vanity splashback and one bath/shower wall\*\*

Bespoke designed vanity unit with composite stone top

Mirrored cabinet with feature lighting

Undermounted white ceramic basin with polished chrome Hansgrohe feature tap

White WC with concealed cistern and polished chrome dual flush button

White bath with glass shower screen, Hansgrohe shower, wall mounted mixer and bath filler (where bath shown on floorplan)

White shower tray with sliding glass door, Hansgrohe shower and wall mounted mixer (where shower shown on floorplan)

Shaver socket integrated in cabinet

Chrome heated towel rail

Glass shelf to shower

Chrome toilet roll holder, robe hooks and towel bar on vanity unit

**ELECTRICS/LIGHTING**

Satin chrome finish to visible kitchen sockets

White switch and sockets to other locations

USB socket in bedrooms, living room and kitchen

Provision for SkyQ to the living room and master bedroom

High and low level HDMI to reception and master bedroom

High level TV point to living room and master bedroom

LED downlights to kitchen/dining/living room, bathroom/en-suite, hall and master bedroom

Pendant lights to second and third bedrooms

Provision for feature pendant lighting to kitchen breakfast bar\*

Lighting to utility and coat cupboards

Video door entry system

Entrance to apartment building cores via electronic access control

Entrance to car park via electronic access control

CCTV to car park and external communal areas

**WALL & FLOOR FINISHES**

Off-white painted internal walls and ceilings

Timber effect flooring to hall, kitchen/living room and coat cupboard\*

Tiled floor to utility cupboard

Carpet to all bedrooms\*

**COAT CUPBOARDS**

High level shelf with hanging rail and light

**WARDROBE**

Fitted wardrobe to master bedrooms with sliding doors, high level shelf, hanging rail and LED strip lighting

Optional upgrade to second bedroom\*

**DOORS & JOINERY**

Timber effect entry door and architrave with multi-point locking system, latch and spy hole

Satin white painted internal doors, skirting, and architraves

Satin stainless steel ironmongery throughout

**HEATING/VENTILATION**

Radiators throughout

Electric underfloor heating in bathrooms and en-suites

Communal heating system

Mechanical Extract Ventilation (MEV)

**COMMUNAL AREAS**

Interior designed communal areas

Movement controlled lighting to all corridors

Carpet to corridors

**CUSTOMER UPGRADES**

Bespoke breakfast bar/island unit to kitchen\*

Pendant light over breakfast bar/island unit\*

Built in wardrobe to second bedrooms\*

Laminate floor finish to bedrooms\*

\*Where applicable and layout depending.

\*\* Palette options are subject to the build stage at time of reservation.

Your attention is drawn to the fact that it may not be possible to provide the branded products as referred to in the specification.



04

# SITE PLAN



**HORNSEY  
PARK  
PLACE**

Key

Clarendon Yards Cultural Quarter (Temporary use)

24-hour concierge

Residents' facilities, lounge, swimming pool, gym & spa (Subject to planning, location to be confirmed)

Residents' gym (Location may change)

Creche

Information Centre opening in 2019

Incorporates affordable housing

Energy Centre in basement (future phase)

Hornsey Park Place is the first phase, all other buildings are future phases

Site map for illustration purposes only and not to scale



Computer-generated image of the concierge is indicative only and subject to change



Image depicts pool at Woodberry Down, indicative only and subject to change



Lifestyle and computer-generated images are indicative only

GROUND FLOOR AND CONCIERGE



- Lobby & 24-hour concierge
- Sales & marketing suite

Floorplans are for approximate measurements only. Measurements may vary within a tolerance of 5%. The dimensions are not intended to be used for carpet sizes, appliance sizes or items of furniture. Furniture shown is not included. Car parking space arrangement subject to change.







- ◀▶ Measurement points
- Suite apartment
- One bed apartment
- Two bed apartment
- Sales & marketing suite
- W Fitted wardrobe
- [W] Optional wardrobe
- W/D Washer/dryer
- U Utility cupboard
- C Coat cupboard

Floorplans are for approximate measurements only. Measurements may vary within a tolerance of 5%. The dimensions are not intended to be used for carpet sizes, appliance sizes or items of furniture. Furniture shown is not included.



**APARTMENT 12**  
TWO BEDROOM, TYPE 12

- Living / Dining  
4.59 x 4.41 m / 15'1" x 14'6"
- Kitchen  
2.81 x 2.25 m / 9'3" x 7'4"
- Master Bedroom  
3.26 x 3.04 m / 10'8" x 10'0"
- Bedroom 2  
2.80 x 4.64 m / 9'2" x 15'3"
- Total Internal Area**  
72.5 sq m / 780.6 sq ft
- Balcony  
4.44 x 1.64 m / 14'7" x 5'5"
- Total Balcony Area**  
7.1 sq m / 75.9 sq ft

**APARTMENT 13**  
TWO BEDROOM, TYPE 13

- Living Room  
4.35 x 3.11 m / 14'3" x 10'2"
- Kitchen / Dining  
4.04 x 2.74 m / 13'3" x 9'0"
- Master Bedroom  
3.20 x 4.60 m / 10'6" x 15'1"
- Bedroom 2  
2.80 x 3.23 m / 9'2" x 10'7"
- Total Internal Area**  
70.7 sq m / 760.5 sq ft
- Balcony  
4.25 x 1.58 m / 13'11" x 5'2"
- Total Balcony Area**  
6.9 sq m / 74.8 sq ft

**APARTMENT 14**  
TWO BEDROOM, TYPE 14

- Living / Dining  
3.91 x 4.05 m / 12'10" x 13'3"
- Kitchen  
3.66 x 2.20 m / 12'0" x 7'2"
- Master Bedroom  
2.90 x 4.48 m / 9'6" x 14'8"
- Bedroom 2  
3.81 x 2.74 m / 12'6" x 9'0"
- Total Internal Area**  
70.1 sq m / 754.9 sq ft
- Balcony  
4.35 x 1.54 m / 14'4" x 5'1"
- Total Balcony Area**  
6.6 sq m / 70.9 sq ft

**APARTMENT 4**  
TWO BEDROOM, TYPE 1

- Living Room  
3.66 x 3.88 m / 12'0" x 12'9"
- Kitchen  
2.93 x 2.29 m / 9'7" x 7'6"
- Master Bedroom  
2.75 x 5.66 m / 9'0" x 18'7"
- Bedroom 2  
2.75 x 3.61 m / 9'0" x 11'10"
- Total Internal Area**  
69.4 sq m / 747.5 sq ft
- Balcony  
2.95 x 2.19 m / 9'8" x 7'2"
- Total Balcony Area**  
6.5 sq m / 69.5 sq ft

**APARTMENT 5**  
ONE BEDROOM, TYPE 2

- Living / Dining  
4.35 x 3.54 m / 14'3" x 11'7"
- Kitchen  
3.15 x 3.54 m / 10'4" x 11'7"
- Master Bedroom  
4.38 x 3.06 m / 14'4" x 10'0"
- Total Internal Area**  
52.3 sq m / 563.3 sq ft
- Balcony  
3.60 x 1.50 m / 11'10" x 4'11"
- Total Balcony Area**  
5.1 sq m / 54.8 sq ft

**APARTMENT 6**  
ONE BEDROOM, TYPE 3A

- Living / Dining  
4.17 x 3.87 m / 13'8" x 12'8"
- Kitchen  
2.17 x 3.50 m / 7'1" x 11'6"
- Master Bedroom  
2.85 x 5.35 m / 9'4" x 17'6"
- Total Internal Area**  
53.1 sq m / 572.1 sq ft
- Balcony  
3.07 x 1.66 m / 10'1" x 5'5"
- Total Balcony Area**  
5.0 sq m / 53.5 sq ft

**APARTMENT 7**  
TWO BEDROOM, TYPE 7A

- Living / Dining  
3.46 x 4.43 m / 11'4" x 14'6"
- Kitchen  
2.54 x 2.80 m / 8'4" x 9'2"
- Master Bedroom  
2.76 x 4.87 m / 9'0" x 16'0"
- Bedroom 2  
2.55 x 3.32 m / 8'4" x 10'11"
- Total Internal Area**  
65.1 sq m / 700.2 sq ft
- Terrace  
3.66 x 1.72 m / 12'0" x 5'7"
- Total Terrace Area**  
6.0 sq m / 64.5 sq ft

**APARTMENT 8**  
SUITE, TYPE 8A

- Living / Dining  
3.33 x 3.17 m / 10'11" x 10'5"
- Kitchen  
3.33 x 3.48 m / 10'11" x 11'5"
- Bedroom  
2.27 x 3.75 m / 7'5" x 12'4"
- Total Internal Area**  
41.6 sq m / 447.9 sq ft
- Terrace  
3.61 x 1.41 m / 11'10" x 4'0"
- Total Terrace Area**  
5.0 sq m / 53.8 sq ft

**APARTMENT 9**  
ONE BEDROOM, TYPE 9

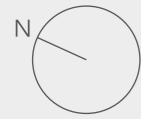
- Living / Dining  
3.73 x 4.06 m / 12'3" x 13'4"
- Kitchen  
3.73 x 3.40 m / 12'3" x 11'2"
- Master Bedroom  
3.27 x 4.31 m / 10'9" x 14'2"
- Total Internal Area**  
54.7 sq m / 588.6 sq ft
- Terrace  
3.71 x 1.50 m / 12'2" x 4'11"
- Total Terrace Area**  
5.3 sq m / 57.2 sq ft

**APARTMENT 10**  
ONE BEDROOM, TYPE 10A

- Living / Dining  
4.88 x 2.88 m / 16'0" x 9'5"
- Kitchen  
5.20 x 2.39 m / 17'1" x 7'10"
- Master Bedroom  
3.27 x 6.35 m / 10'9" x 20'10"
- Total Internal Area**  
58.9 sq m / 634.1 sq ft
- Terrace  
3.29 x 1.63 m / 10'9" x 5'4"
- Total Terrace Area**  
5.1 sq m / 54.8 sq ft

**APARTMENT 11**  
TWO BEDROOM, TYPE 11

- Living Room  
3.70 x 3.38 m / 12'2" x 11'1"
- Kitchen / Dining  
3.72 x 2.39 m / 12'2" x 7'10"
- Master Bedroom  
2.74 x 4.67 m / 9'0" x 15'4"
- Bedroom 2  
2.52 x 3.59 m / 8'3" x 11'9"
- Total Internal Area**  
63.9 sq m / 688.1 sq ft
- Terrace  
2.57 x 2.54 m / 8'5" x 8'4"
- Total Terrace Area**  
6.3 sq m / 68.2 sq ft



26

27

28

15

16

17

18

19

23

22

21

20

24

25

- ◄► Measurement points
- W Fitted wardrobe
- [W] Optional wardrobe
- W/D Washer/dryer
- U Utility cupboard
- C Coat cupboard

Floorplans are for approximate measurements only. Measurements may vary within a tolerance of 5%. The dimensions are not intended to be used for carpet sizes, appliance sizes or items of furniture. Furniture shown is not included.



**APARTMENT 25**  
TWO BEDROOM, TYPE 11

Living Room	3.70 x 3.38 m / 12'2" x 11'1"
Kitchen / Dining	3.72 x 2.39 m / 12'2" x 7'10"
Master Bedroom	2.74 x 4.67 m / 9'0" x 15'4"
Bedroom 2	2.52 x 3.59 m / 8'3" x 11'9"
<b>Total Internal Area</b>	<b>63.9 sq m / 688.1 sq ft</b>
Balcony	2.57 x 2.54 m / 8'5" x 8'4"
<b>Total Balcony Area</b>	<b>6.3 sq m / 68.2 sq ft</b>

**APARTMENT 26**  
TWO BEDROOM, TYPE 12A

Living / Dining	4.59 x 4.41 m / 15'1" x 14'6"
Kitchen	2.81 x 2.26 m / 9'3" x 7'5"
Master Bedroom	3.26 x 3.04 m / 10'8" x 10'0"
Bedroom 2	2.80 x 4.64 m / 9'2" x 15'3"
<b>Total Internal Area</b>	<b>72.5 sq m / 780.6 sq ft</b>
Balcony	4.44 x 1.64 m / 14'7" x 5'5"
<b>Total Balcony Area</b>	<b>7.1 sq m / 75.9 sq ft</b>

**APARTMENT 27**  
TWO BEDROOM, TYPE 13A

Living Room	4.35 x 3.11 m / 14'3" x 10'2"
Kitchen / Dining	4.04 x 2.74 m / 13'3" x 9'0"
Master Bedroom	3.18 x 4.60 m / 10'5" x 15'1"
Bedroom 2	2.80 x 3.23 m / 9'2" x 10'7"
<b>Total Internal Area</b>	<b>70.7 sq m / 760.5 sq ft</b>
Balcony	4.25 x 1.58 m / 13'11" x 5'2"
<b>Total Balcony Area</b>	<b>7.0 sq m / 75.6 sq ft</b>

**APARTMENT 28**  
TWO BEDROOM, TYPE 14A

Living / Dining	3.98 x 4.06 m / 13'1" x 13'4"
Kitchen	3.66 x 3.32 m / 12'0" x 10'11"
Master Bedroom	2.90 x 4.55 m / 9'6" x 14'11"
Bedroom 2	3.81 x 2.81 m / 12'6" x 9'3"
<b>Total Internal Area</b>	<b>70.9 sq m / 762.8 sq ft</b>
Balcony	4.36 x 1.54 m / 14'4" x 5'1"
<b>Total Balcony Area</b>	<b>6.4 sq m / 68.4 sq ft</b>

**APARTMENT 21**  
TWO BEDROOM, TYPE 7

Living / Dining	3.46 x 4.43 m / 11'4" x 14'6"
Kitchen	2.54 x 2.80 m / 8'4" x 9'2"
Master Bedroom	2.76 x 4.87 m / 9'0" x 16'0"
Bedroom 2	2.55 x 3.32 m / 8'4" x 10'11"
<b>Total Internal Area</b>	<b>65.1 sq m / 700.2 sq ft</b>
Balcony	2.98 x 2.20 m / 9'9" x 7'3"
<b>Total Balcony Area</b>	<b>6.3 sq m / 68.0 sq ft</b>

**APARTMENT 22**  
SUITE, TYPE 8

Living / Dining	3.33 x 3.17 m / 10'11" x 10'5"
Kitchen	3.33 x 3.48 m / 10'11" x 11'5"
Bedroom	2.27 x 3.75 m / 7'5" x 12'4"
<b>Total Internal Area</b>	<b>41.6 sq m / 447.9 sq ft</b>
Balcony	3.21 x 1.52 m / 10'6" x 5'0"
<b>Total Balcony Area</b>	<b>5.0 sq m / 54.0 sq ft</b>

**APARTMENT 19,**  
TWO BEDROOM, TYPE 5

Living / Dining	3.01 x 4.70 m / 9'11" x 15'5"
Kitchen	2.16 x 3.85 m / 7'1" x 12'8"
Master Bedroom	2.98 x 4.67 m / 9'9" x 15'4"
Bedroom 2	3.29 x 3.68 m / 10'10" x 12'1"
<b>Total Internal Area</b>	<b>69.5 sq m / 748.0 sq ft</b>
Balcony	1.77 x 4.32 m / 5'10" x 14'2"
<b>Total Balcony Area</b>	<b>7.3 sq m / 78.1 sq ft</b>

**APARTMENT 20**  
TWO BEDROOM, TYPE 6

Living Room	4.03 x 2.98 m / 13'3" x 9'9"
Kitchen / Dining	4.36 x 3.11 m / 14'4" x 10'2"
Master Bedroom	3.04 x 3.04 m / 10'0" x 10'0"
Bedroom 2	2.75 x 3.61 m / 9'0" x 11'10"
<b>Total Internal Area</b>	<b>68.9 sq m / 742.0 sq ft</b>
Balcony	3.06 x 2.21 m / 10'1" x 7'3"
<b>Total Balcony Area</b>	<b>6.4 sq m / 68.4 sq ft</b>

**APARTMENT 15**  
TWO BEDROOM, TYPE 1A

Living / Dining	3.66 x 3.84 m / 12'0" x 12'7"
Kitchen	2.93 x 2.33 m / 9'7" x 7'8"
Master Bedroom	2.75 x 3.36 m / 9'0" x 11'0"
Bedroom 2	2.73 x 3.36 m / 8'11" x 11'0"
<b>Total Internal Area</b>	<b>68.8 sq m / 740.3 sq ft</b>
Balcony	2.94 x 2.19 m / 9'8" x 7'2"
<b>Total Balcony Area</b>	<b>6.5 sq m / 69.5 sq ft</b>

**APARTMENT 16**  
ONE BEDROOM, TYPE 2A

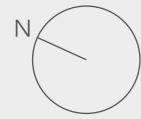
Living / Dining	3.54 x 4.35 m / 11'7" x 14'3"
Kitchen	3.54 x 3.15 m / 11'7" x 10'4"
Master Bedroom	2.83 x 4.38 m / 9'3" x 14'4"
<b>Total Internal Area</b>	<b>52.3 sq m / 563.3 sq ft</b>
Balcony	3.60 x 1.50 m / 11'10" x 4'11"
<b>Total Balcony Area</b>	<b>5.1 sq m / 54.8 sq ft</b>

**APARTMENT 17**  
SUITE, TYPE 3

Living / Dining	3.31 x 3.18 m / 10'10" x 10'5"
Kitchen	3.31 x 3.34 m / 10'10" x 10'11"
Bedroom	2.29 x 3.81 m / 7'6" x 12'6"
<b>Total Internal Area</b>	<b>41.0 sq m / 441.9 sq ft</b>
Balcony	3.06 x 1.66 m / 10'0" x 5'6"
<b>Total Balcony Area</b>	<b>5.0 sq m / 53.5 sq ft</b>

**APARTMENT 18**  
ONE BEDROOM, TYPE 4

Living Room	4.05 x 3.92 m / 13'3" x 12'10"
Kitchen / Dining	4.05 x 3.10 m / 13'3" x 10'2"
Master Bedroom	3.15 x 3.71 m / 10'4" x 12'2"
<b>Total Internal Area</b>	<b>51.8 sq m / 557.3 sq ft</b>
Balcony	3.60 x 1.49 m / 11'11" x 4'10"
<b>Total Balcony Area</b>	<b>5.4 sq m / 58.2 sq ft</b>



- ◄► Measurement points
- W Fitted wardrobe
- [W] Optional wardrobe
- W/D Washer/dryer
- U Utility cupboard
- C Coat cupboard

Floorplans are for approximate measurements only. Measurements may vary within a tolerance of 5%. The dimensions are not intended to be used for carpet sizes, appliance sizes or items of furniture. Furniture shown is not included.



**APARTMENT 39**  
TWO BEDROOM, TYPE 11

Living Room	3.70 x 3.38 m / 12'2" x 11'1"
Kitchen / Dining	3.72 x 2.39 m / 12'2" x 7'10"
Master Bedroom	2.74 x 4.67 m / 9'0" x 15'4"
Bedroom 2	2.52 x 3.59 m / 8'3" x 11'9"
<b>Total Internal Area</b>	<b>63.9 sq m / 688.1 sq ft</b>
Balcony	2.57 x 2.54 m / 8'5" x 8'4"
<b>Total Balcony Area</b>	<b>6.3 sq m / 68.2 sq ft</b>

**APARTMENT 40**  
TWO BEDROOM, TYPE 12

Living / Dining	4.59 x 4.41 m / 15'1" x 14'6"
Kitchen	2.81 x 2.25 m / 9'3" x 7'4"
Master Bedroom	3.26 x 3.04 m / 10'8" x 10'0"
Bedroom 2	2.80 x 4.64 m / 9'2" x 15'3"
<b>Total Internal Area</b>	<b>72.5 sq m / 780.6 sq ft</b>
Balcony	4.44 x 1.64 m / 14'7" x 5'5"
<b>Total Balcony Area</b>	<b>7.1 sq m / 75.9 sq ft</b>

**APARTMENT 41**  
TWO BEDROOM, TYPE 13

Living Room	4.35 x 3.11 m / 14'3" x 10'2"
Kitchen / Dining	4.04 x 2.74 m / 13'3" x 9'0"
Master Bedroom	3.20 x 4.60 m / 10'6" x 15'1"
Bedroom 2	2.80 x 3.23 m / 9'2" x 10'7"
<b>Total Internal Area</b>	<b>70.7 sq m / 760.5 sq ft</b>
Balcony	4.25 x 1.58 m / 13'11" x 5'2"
<b>Total Balcony Area</b>	<b>6.9 sq m / 74.8 sq ft</b>

**APARTMENT 42**  
TWO BEDROOM, TYPE 14A

Living / Dining	3.98 x 4.06 m / 13'1" x 13'4"
Kitchen	3.66 x 3.32 m / 12'0" x 10'11"
Master Bedroom	2.90 x 4.55 m / 9'6" x 14'11"
Bedroom 2	3.81 x 2.81 m / 12'6" x 9'3"
<b>Total Internal Area</b>	<b>70.9 sq m / 762.8 sq ft</b>
Balcony	4.36 x 1.54 m / 14'4" x 5'1"
<b>Total Balcony Area</b>	<b>6.4 sq m / 68.4 sq ft</b>

**APARTMENT 35**  
TWO BEDROOM, TYPE 7

Living / Dining	3.46 x 4.43 m / 11'4" x 14'6"
Kitchen	2.54 x 2.80 m / 8'4" x 9'2"
Master Bedroom	2.76 x 4.87 m / 9'0" x 16'0"
Bedroom 2	2.55 x 3.32 m / 8'4" x 10'11"
<b>Total Internal Area</b>	<b>65.1 sq m / 700.2 sq ft</b>
Balcony	2.98 x 2.20 m / 9'9" x 7'3"
<b>Total Balcony Area</b>	<b>6.3 sq m / 68.0 sq ft</b>

**APARTMENT 36**  
SUITE, TYPE 8

Living / Dining	3.33 x 3.17 m / 10'11" x 10'5"
Kitchen	3.33 x 3.48 m / 10'11" x 11'5"
Bedroom	2.27 x 3.75 m / 7'5" x 12'4"
<b>Total Internal Area</b>	<b>41.6 sq m / 447.9 sq ft</b>
Balcony	3.21 x 1.52 m / 10'6" x 5'0"
<b>Total Balcony Area</b>	<b>5.0 sq m / 54.0 sq ft</b>

**APARTMENT 37**  
ONE BEDROOM, TYPE 9

Living / Dining	3.73 x 4.06 m / 12'3" x 13'4"
Kitchen	3.73 x 3.40 m / 12'3" x 11'2"
Master Bedroom	3.27 x 4.31 m / 10'9" x 14'2"
<b>Total Internal Area</b>	<b>54.7 sq m / 588.6 sq ft</b>
Balcony	3.71 x 1.50 m / 12'2" x 4'11"
<b>Total Balcony Area</b>	<b>5.3 sq m / 57.2 sq ft</b>

**APARTMENT 38**  
TWO BEDROOM, TYPE 10

Living / Dining	4.51 x 3.50 m / 14'9" x 11'6"
Kitchen	3.60 x 2.20 m / 11'10" x 7'3"
Master Bedroom	3.43 x 3.27 m / 11'3" x 10'9"
Bedroom 2	3.67 x 2.77 m / 12'0" x 9'1"
<b>Total Internal Area</b>	<b>71.7 sq m / 772.2 sq ft</b>
Balcony	3.19 x 2.27 m / 10'6" x 7'6"
<b>Total Balcony Area</b>	<b>7.3 sq m / 78.6 sq ft</b>

**APARTMENT 33**  
TWO BEDROOM, TYPE 5

Living / Dining	3.01 x 4.70 m / 9'11" x 15'5"
Kitchen	2.16 x 3.85 m / 7'1" x 12'8"
Master Bedroom	2.98 x 4.67 m / 9'9" x 15'4"
Bedroom 2	3.29 x 3.68 m / 10'10" x 12'1"
<b>Total Internal Area</b>	<b>69.5 sq m / 748.0 sq ft</b>
Balcony	1.77 x 4.32 m / 5'10" x 14'2"
<b>Total Balcony Area</b>	<b>7.3 sq m / 78.1 sq ft</b>

**APARTMENT 34**  
TWO BEDROOM, TYPE 6

Living Room	4.03 x 2.98 m / 13'3" x 9'9"
Kitchen / Dining	4.36 x 3.11 m / 14'4" x 10'2"
Master Bedroom	3.04 x 3.04 m / 10'0" x 10'0"
Bedroom 2	2.75 x 3.61 m / 9'0" x 11'10"
<b>Total Internal Area</b>	<b>68.9 sq m / 742.0 sq ft</b>
Balcony	3.06 x 2.21 m / 10'1" x 7'3"
<b>Total Balcony Area</b>	<b>6.4 sq m / 68.4 sq ft</b>

**APARTMENT 29**  
TWO BEDROOM, TYPE 1B

Living / Dining	3.66 x 3.84 m / 12'0" x 12'7"
Kitchen	2.93 x 2.33 m / 9'7" x 7'8"
Master Bedroom	2.75 x 3.36 m / 9'0" x 11'0"
Bedroom 2	2.75 x 3.36 m / 9'0" x 11'0"
<b>Total Internal Area</b>	<b>68.8 sq m / 740.3 sq ft</b>
Balcony	2.94 x 2.19 m / 9'8" x 7'2"
<b>Total Balcony Area</b>	<b>6.5 sq m / 69.5 sq ft</b>

**APARTMENT 30**  
ONE BEDROOM, TYPE 2B

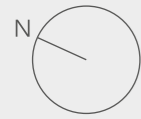
Living / Dining	4.35 x 3.54 m / 14'3" x 11'7"
Kitchen	3.15 x 3.54 m / 10'4" x 11'7"
Master Bedroom	4.38 x 3.06 m / 14'4" x 10'0"
<b>Total Internal Area</b>	<b>52.3 sq m / 563.3 sq ft</b>
Balcony	3.60 x 1.50 m / 11'10" x 4'11"
<b>Total Balcony Area</b>	<b>5.1 sq m / 54.8 sq ft</b>

**APARTMENT 31**  
SUITE, TYPE 3

Living / Dining	3.31 x 3.18 m / 10'10" x 10'5"
Kitchen	3.31 x 3.34 m / 10'10" x 10'11"
Bedroom	2.29 x 3.81 m / 7'6" x 12'6"
<b>Total Internal Area</b>	<b>41.0 sq m / 441.9 sq ft</b>
Balcony	3.06 x 1.66 m / 10'0" x 5'6"
<b>Total Balcony Area</b>	<b>5.0 sq m / 53.5 sq ft</b>

**APARTMENT 32**  
ONE BEDROOM, TYPE 4

Living Room	4.05 x 3.92 m / 13'3" x 12'10"
Kitchen / Dining	4.05 x 3.10 m / 13'3" x 10'2"
Master Bedroom	3.15 x 3.71 m / 10'4" x 12'2"
<b>Total Internal Area</b>	<b>51.8 sq m / 557.3 sq ft</b>
Balcony	3.60 x 1.49 m / 11'11" x 4'10"
<b>Total Balcony Area</b>	<b>5.4 sq m / 58.2 sq ft</b>



54

55

56

43

44

45

46

47

51

50

49

48

52

53

- ◄► Measurement points
- W Fitted wardrobe
- [W] Optional wardrobe
- W/D Washer/dryer
- U Utility cupboard
- C Coat cupboard

- Suite apartment
- One bed apartment
- Two bed apartment

Floorplans are for approximate measurements only. Measurements may vary within a tolerance of 5%. The dimensions are not intended to be used for carpet sizes, appliance sizes or items of furniture. Furniture shown is not included.



**APARTMENT 53**  
TWO BEDROOM, TYPE 11

Living Room	3.70 x 3.38 m / 12'2" x 11'1"
Kitchen / Dining	3.72 x 2.39 m / 12'2" x 7'10"
Master Bedroom	2.74 x 4.67 m / 9'0" x 15'4"
Bedroom 2	2.52 x 3.59 m / 8'3" x 11'9"
<b>Total Internal Area</b>	<b>63.9 sq m / 688.1 sq ft</b>
Balcony	2.57 x 2.54 m / 8'5" x 8'4"
<b>Total Balcony Area</b>	<b>6.3 sq m / 68.2 sq ft</b>

**APARTMENT 54**  
TWO BEDROOM, TYPE 12A

Living / Dining	4.59 x 4.41 m / 15'1" x 14'6"
Kitchen	2.81 x 2.26 m / 9'3" x 7'5"
Master Bedroom	3.26 x 3.04 m / 10'8" x 10'0"
Bedroom 2	2.80 x 4.64 m / 9'2" x 15'3"
<b>Total Internal Area</b>	<b>72.5 sq m / 780.6 sq ft</b>
Balcony	4.44 x 1.64 m / 14'7" x 5'5"
<b>Total Balcony Area</b>	<b>7.1 sq m / 75.9 sq ft</b>

**APARTMENT 55**  
TWO BEDROOM, TYPE 13A

Living Room	4.35 x 3.11 m / 14'3" x 10'2"
Kitchen / Dining	4.04 x 2.74 m / 13'3" x 9'0"
Master Bedroom	3.18 x 4.60 m / 10'5" x 15'1"
Bedroom 2	2.80 x 3.23 m / 9'2" x 10'7"
<b>Total Internal Area</b>	<b>70.7 sq m / 760.5 sq ft</b>
Balcony	4.25 x 1.58 m / 13'11" x 5'2"
<b>Total Balcony Area</b>	<b>7.0 sq m / 75.6 sq ft</b>

**APARTMENT 56**  
TWO BEDROOM, TYPE 14A

Living / Dining	3.98 x 4.06 m / 13'1" x 13'4"
Kitchen	3.66 x 3.32 m / 12'0" x 10'11"
Master Bedroom	2.90 x 4.55 m / 9'6" x 14'11"
Bedroom 2	3.81 x 2.81 m / 12'6" x 9'3"
<b>Total Internal Area</b>	<b>70.9 sq m / 762.8 sq ft</b>
Balcony	4.36 x 1.54 m / 14'4" x 5'1"
<b>Total Balcony Area</b>	<b>6.4 sq m / 68.4 sq ft</b>

**APARTMENT 49**  
TWO BEDROOM, TYPE 7

Living / Dining	3.46 x 4.43 m / 11'4" x 14'6"
Kitchen	2.54 x 2.80 m / 8'4" x 9'2"
Master Bedroom	2.76 x 4.87 m / 9'0" x 16'0"
Bedroom 2	2.55 x 3.32 m / 8'4" x 10'11"
<b>Total Internal Area</b>	<b>65.1 sq m / 700.2 sq ft</b>
Balcony	2.98 x 2.20 m / 9'9" x 7'3"
<b>Total Balcony Area</b>	<b>6.3 sq m / 68.0 sq ft</b>

**APARTMENT 50**  
SUITE, TYPE 8

Living / Dining	3.33 x 3.17 m / 10'11" x 10'5"
Kitchen	3.33 x 3.48 m / 10'11" x 11'5"
Bedroom	2.27 x 3.75 m / 7'5" x 12'4"
<b>Total Internal Area</b>	<b>41.6 sq m / 447.9 sq ft</b>
Balcony	3.21 x 1.52 m / 10'6" x 5'0"
<b>Total Balcony Area</b>	<b>5.0 sq m / 54.0 sq ft</b>

**APARTMENT 51**  
ONE BEDROOM, TYPE 9

Living / Dining	3.73 x 4.06 m / 12'3" x 13'4"
Kitchen	3.73 x 3.40 m / 12'3" x 11'2"
Master Bedroom	3.27 x 4.31 m / 10'9" x 14'2"
<b>Total Internal Area</b>	<b>54.7 sq m / 588.6 sq ft</b>
Balcony	3.71 x 1.50 m / 12'2" x 4'11"
<b>Total Balcony Area</b>	<b>5.3 sq m / 57.2 sq ft</b>

**APARTMENT 52**  
TWO BEDROOM, TYPE 10

Living / Dining	4.51 x 3.50 m / 14'9" x 11'6"
Kitchen	3.60 x 2.20 m / 11'10" x 7'3"
Master Bedroom	3.43 x 3.27 m / 11'3" x 10'9"
Bedroom 2	3.67 x 2.77 m / 12'0" x 9'1"
<b>Total Internal Area</b>	<b>71.7 sq m / 772.2 sq ft</b>
Balcony	3.19 x 2.27 m / 10'6" x 7'6"
<b>Total Balcony Area</b>	<b>7.3 sq m / 78.6 sq ft</b>

**APARTMENT 47**  
TWO BEDROOM, TYPE 5

Living / Dining	3.01 x 4.70 m / 9'11" x 15'5"
Kitchen	2.16 x 3.85 m / 7'1" x 12'8"
Master Bedroom	2.98 x 4.67 m / 9'9" x 15'4"
Bedroom 2	3.29 x 3.68 m / 10'10" x 12'1"
<b>Total Internal Area</b>	<b>69.5 sq m / 748.0 sq ft</b>
Balcony	1.77 x 4.32 m / 5'10" x 14'2"
<b>Total Balcony Area</b>	<b>7.3 sq m / 78.1 sq ft</b>

**APARTMENT 48**  
TWO BEDROOM, TYPE 6

Living Room	4.03 x 2.98 m / 13'3" x 9'9"
Kitchen / Dining	4.36 x 3.11 m / 14'4" x 10'2"
Master Bedroom	3.04 x 3.04 m / 10'0" x 10'0"
Bedroom 2	2.75 x 3.61 m / 9'0" x 11'10"
<b>Total Internal Area</b>	<b>68.9 sq m / 742.0 sq ft</b>
Balcony	3.06 x 2.21 m / 10'1" x 7'3"
<b>Total Balcony Area</b>	<b>6.4 sq m / 68.4 sq ft</b>

**APARTMENT 43**  
TWO BEDROOM, TYPE 1A

Living / Dining	3.66 x 3.84 m / 12'0" x 12'7"
Kitchen	2.93 x 2.33 m / 9'7" x 7'8"
Master Bedroom	2.75 x 3.36 m / 9'0" x 11'0"
Bedroom 2	2.73 x 3.36 m / 8'11" x 11'0"
<b>Total Internal Area</b>	<b>68.8 sq m / 740.3 sq ft</b>
Balcony	2.94 x 2.19 m / 9'8" x 7'2"
<b>Total Balcony Area</b>	<b>6.5 sq m / 69.5 sq ft</b>

**APARTMENT 44**  
ONE BEDROOM, TYPE 2A

Living / Dining	3.54 x 4.35 m / 11'7" x 14'3"
Kitchen	3.54 x 3.15 m / 11'7" x 10'4"
Master Bedroom	2.83 x 4.38 m / 9'3" x 14'4"
<b>Total Internal Area</b>	<b>52.3 sq m / 563.3 sq ft</b>
Balcony	3.60 x 1.50 m / 11'10" x 4'11"
<b>Total Balcony Area</b>	<b>5.1 sq m / 54.8 sq ft</b>

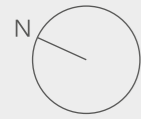
**APARTMENT 45**  
SUITE, TYPE 3

Living / Dining	3.31 x 3.18 m / 10'10" x 10'5"
Kitchen	3.31 x 3.34 m / 10'10" x 10'11"
Bedroom	2.29 x 3.81 m / 7'6" x 12'6"
<b>Total Internal Area</b>	<b>41.0 sq m / 441.9 sq ft</b>
Balcony	3.06 x 1.66 m / 10'0" x 5'6"
<b>Total Balcony Area</b>	<b>5.0 sq m / 53.5 sq ft</b>

**APARTMENT 46**  
ONE BEDROOM, TYPE 4

Living Room	4.05 x 3.92 m / 13'3" x 12'10"
Kitchen / Dining	4.05 x 3.10 m / 13'3" x 10'2"
Master Bedroom	3.15 x 3.71 m / 10'4" x 12'2"
<b>Total Internal Area</b>	<b>51.8 sq m / 557.3 sq ft</b>
Balcony	3.60 x 1.49 m / 11'11" x 4'10"
<b>Total Balcony Area</b>	<b>5.4 sq m / 58.2 sq ft</b>

FLOOR 05



- ◄► Measurement points
- W Fitted wardrobe
- [W] Optional wardrobe
- W/D Washer/dryer
- U Utility cupboard
- C Coat cupboard

- Suite apartment
- One bed apartment
- Two bed apartment

Floorplans are for approximate measurements only. Measurements may vary within a tolerance of 5%. The dimensions are not intended to be used for carpet sizes, appliance sizes or items of furniture. Furniture shown is not included.



**APARTMENT 67**  
TWO BEDROOM, TYPE 11

Living Room	3.70 x 3.38 m / 12'2" x 11'1"
Kitchen / Dining	3.72 x 2.39 m / 12'2" x 7'10"
Master Bedroom	2.74 x 4.67 m / 9'0" x 15'4"
Bedroom 2	2.52 x 3.59 m / 8'3" x 11'9"
<b>Total Internal Area</b>	<b>63.9 sq m / 688.1 sq ft</b>
Balcony	2.57 x 2.54 m / 8'5" x 8'4"
<b>Total Balcony Area</b>	<b>6.3 sq m / 68.2 sq ft</b>

**APARTMENT 68**  
TWO BEDROOM, TYPE 23

Living / Dining	3.30 x 4.26 m / 10'10" x 14'0"
Kitchen	3.08 x 2.88 m / 10'1" x 9'5"
Master Bedroom	3.01 x 3.04 m / 9'10" x 10'0"
Bedroom 2	3.33 x 3.69 m / 10'11" x 12'1"
<b>Total Internal Area</b>	<b>72.8 sq m / 783.5 sq ft</b>
Balcony	1.53 x 4.54 m / 5'0" x 14'11"
<b>Total Balcony Area</b>	<b>6.7 sq m / 72.1 sq ft</b>

**APARTMENT 69**  
TWO BEDROOM, TYPE 24

Living Room	4.35 x 3.26 m / 14'3" x 10'8"
Kitchen / Dining	4.04 x 2.59 m / 13'3" x 8'6"
Master Bedroom	3.00 x 4.90 m / 9'10" x 16'1"
Bedroom 2	3.00 x 3.53 m / 9'10" x 11'7"
<b>Total Internal Area</b>	<b>70.7 sq m / 760.6 sq ft</b>
Balcony	1.66 x 4.32 m / 5'5" x 14'2"
<b>Total Balcony Area</b>	<b>7.0 sq m / 75.6 sq ft</b>

**APARTMENT 70**  
TWO BEDROOM, TYPE 14A

Living / Dining	3.98 x 4.06 m / 13'1" x 13'4"
Kitchen	3.66 x 3.32 m / 12'0" x 10'11"
Master Bedroom	2.90 x 4.55 m / 9'6" x 14'11"
Bedroom 2	3.81 x 2.81 m / 12'6" x 9'3"
<b>Total Internal Area</b>	<b>70.9 sq m / 762.8 sq ft</b>
Balcony	4.36 x 1.54 m / 14'4" x 5'1"
<b>Total Balcony Area</b>	<b>6.4 sq m / 68.4 sq ft</b>

**APARTMENT 63**  
TWO BEDROOM, TYPE 7

Living / Dining	3.46 x 4.43 m / 11'4" x 14'6"
Kitchen	2.54 x 2.80 m / 8'4" x 9'2"
Master Bedroom	2.76 x 4.87 m / 9'0" x 16'0"
Bedroom 2	2.55 x 3.32 m / 8'4" x 10'11"
<b>Total Internal Area</b>	<b>65.1 sq m / 700.2 sq ft</b>
Balcony	2.98 x 2.20 m / 9'9" x 7'3"
<b>Total Balcony Area</b>	<b>6.3 sq m / 68.0 sq ft</b>

**APARTMENT 64**  
SUITE, TYPE 8

Living / Dining	3.33 x 3.17 m / 10'11" x 10'5"
Kitchen	3.33 x 3.48 m / 10'11" x 11'5"
Bedroom	2.27 x 3.75 m / 7'5" x 12'4"
<b>Total Internal Area</b>	<b>41.6 sq m / 447.9 sq ft</b>
Balcony	3.21 x 1.52 m / 10'6" x 5'0"
<b>Total Balcony Area</b>	<b>5.0 sq m / 54.0 sq ft</b>

**APARTMENT 65**  
ONE BEDROOM, TYPE 9

Living / Dining	3.73 x 4.06 m / 12'3" x 13'4"
Kitchen	3.73 x 3.40 m / 12'3" x 11'2"
Master Bedroom	3.27 x 4.31 m / 10'9" x 14'2"
<b>Total Internal Area</b>	<b>54.7 sq m / 588.6 sq ft</b>
Balcony	3.71 x 1.50 m / 12'2" x 4'11"
<b>Total Balcony Area</b>	<b>5.3 sq m / 57.2 sq ft</b>

**APARTMENT 66**  
TWO BEDROOM, TYPE 10

Living / Dining	4.51 x 3.50 m / 14'9" x 11'6"
Kitchen	3.60 x 2.20 m / 11'10" x 7'3"
Master Bedroom	3.43 x 3.27 m / 11'3" x 10'9"
Bedroom 2	3.67 x 2.77 m / 12'0" x 9'1"
<b>Total Internal Area</b>	<b>71.7 sq m / 772.2 sq ft</b>
Balcony	3.19 x 2.27 m / 10'6" x 7'6"
<b>Total Balcony Area</b>	<b>7.3 sq m / 78.6 sq ft</b>

**APARTMENT 61**  
TWO BEDROOM, TYPE 5A

Living Room	3.30 x 4.24 m / 10'10" x 13'11"
Kitchen / Dining	3.28 x 2.24 m / 10'9" x 7'4"
Master Bedroom	2.98 x 4.88 m / 9'9" x 16'0"
Bedroom 2	3.28 x 3.85 m / 10'9" x 12'8"
<b>Total Internal Area</b>	<b>70.0 sq m / 753.1 sq ft</b>
Balcony	3.64 x 1.87 m / 11'11" x 6'2"
<b>Total Balcony Area</b>	<b>6.6 sq m / 70.5 sq ft</b>

**APARTMENT 62**  
TWO BEDROOM, TYPE 6

Living Room	4.03 x 2.98 m / 13'3" x 9'9"
Kitchen / Dining	4.36 x 3.11 m / 14'4" x 10'2"
Master Bedroom	3.04 x 3.04 m / 10'0" x 10'0"
Bedroom 2	2.75 x 3.61 m / 9'0" x 11'10"
<b>Total Internal Area</b>	<b>68.9 sq m / 742.0 sq ft</b>
Balcony	3.06 x 2.21 m / 10'1" x 7'3"
<b>Total Balcony Area</b>	<b>6.4 sq m / 68.4 sq ft</b>

**APARTMENT 57**  
TWO BEDROOM, TYPE 1B

Living / Dining	3.66 x 3.84 m / 12'0" x 12'7"
Kitchen	2.93 x 2.33 m / 9'7" x 7'8"
Master Bedroom	2.75 x 3.36 m / 9'0" x 11'0"
Bedroom 2	2.75 x 3.36 m / 9'0" x 11'0"
<b>Total Internal Area</b>	<b>68.8 sq m / 740.3 sq ft</b>
Balcony	2.94 x 2.19 m / 9'8" x 7'2"
<b>Total Balcony Area</b>	<b>6.5 sq m / 69.5 sq ft</b>

**APARTMENT 58**  
ONE BEDROOM, TYPE 2B

Living / Dining	4.35 x 3.54 m / 14'3" x 11'7"
Kitchen	3.15 x 3.54 m / 10'4" x 11'7"
Master Bedroom	4.38 x 3.06 m / 14'4" x 10'0"
<b>Total Internal Area</b>	<b>52.3 sq m / 563.3 sq ft</b>
Balcony	3.60 x 1.50 m / 11'10" x 4'11"
<b>Total Balcony Area</b>	<b>5.1 sq m / 54.8 sq ft</b>

**APARTMENT 59**  
SUITE, TYPE 3

Living / Dining	3.31 x 3.18 m / 10'10" x 10'5"
Kitchen	3.31 x 3.34 m / 10'10" x 10'11"
Bedroom	2.29 x 3.81 m / 7'6" x 12'6"
<b>Total Internal Area</b>	<b>41.0 sq m / 441.9 sq ft</b>
Balcony	3.06 x 1.66 m / 10'0" x 5'6"
<b>Total Balcony Area</b>	<b>5.0 sq m / 53.5 sq ft</b>

**APARTMENT 60**  
ONE BEDROOM, TYPE 4

Living Room	4.05 x 3.92 m / 13'3" x 12'10"
Kitchen / Dining	4.05 x 3.10 m / 13'3" x 10'2"
Master Bedroom	3.15 x 3.71 m / 10'4" x 12'2"
<b>Total Internal Area</b>	<b>51.8 sq m / 557.3 sq ft</b>
Balcony	3.60 x 1.49 m / 11'11" x 4'10"
<b>Total Balcony Area</b>	<b>5.4 sq m / 58.2 sq ft</b>



- ◄► Measurement points
- W Fitted wardrobe
- [W] Optional wardrobe
- W/D Washer/dryer
- U Utility cupboard
- C Coat cupboard

Floorplans are for approximate measurements only. Measurements may vary within a tolerance of 5%. The dimensions are not intended to be used for carpet sizes, appliance sizes or items of furniture. Furniture shown is not included.



**APARTMENT 81**  
TWO BEDROOM, TYPE 11

Living Room	3.70 x 3.38 m / 12'2" x 11'1"
Kitchen / Dining	3.72 x 2.39 m / 12'2" x 7'10"
Master Bedroom	2.74 x 4.67 m / 9'0" x 15'4"
Bedroom 2	2.52 x 3.59 m / 8'3" x 11'9"
<b>Total Internal Area</b>	<b>63.9 sq m / 688.1 sq ft</b>
Balcony	2.57 x 2.54 m / 8'5" x 8'4"
<b>Total Balcony Area</b>	<b>6.3 sq m / 68.2 sq ft</b>

**APARTMENT 82**  
TWO BEDROOM, TYPE 23A

Living Room	3.33 x 4.26 m / 10'11" x 14'0"
Kitchen	3.05 x 2.87 m / 10'0" x 9'5"
Master Bedroom	3.01 x 3.04 m / 9'10" x 10'0"
Bedroom 2	3.33 x 3.69 m / 10'11" x 12'1"
<b>Total Internal Area</b>	<b>72.8 sq m / 783.5 sq ft</b>
Balcony	1.53 x 4.54 m / 5'0" x 14'11"
<b>Total Balcony Area</b>	<b>6.7 sq m / 72.1 sq ft</b>

**APARTMENT 83**  
TWO BEDROOM, TYPE 24A

Living Room	4.35 x 3.29 m / 14'3" x 10'9"
Kitchen / Dining	4.04 x 2.58 m / 13'3" x 8'6"
Master Bedroom	3.00 x 4.90 m / 9'10" x 16'1"
Bedroom 2	3.00 x 3.53 m / 9'10" x 11'7"
<b>Total Internal Area</b>	<b>70.7 sq m / 760.6 sq ft</b>
Balcony	1.66 x 4.32 m / 5'5" x 14'2"
<b>Total Balcony Area</b>	<b>7.0 sq m / 75.6 sq ft</b>

**APARTMENT 84**  
TWO BEDROOM, TYPE 14A

Living / Dining	3.98 x 4.06 m / 13'1" x 13'4"
Kitchen	3.66 x 3.32 m / 12'0" x 10'11"
Master Bedroom	2.90 x 4.55 m / 9'6" x 14'11"
Bedroom 2	3.81 x 2.81 m / 12'6" x 9'3"
<b>Total Internal Area</b>	<b>70.9 sq m / 762.8 sq ft</b>
Balcony	4.36 x 1.54 m / 14'4" x 5'1"
<b>Total Balcony Area</b>	<b>6.4 sq m / 68.4 sq ft</b>

**APARTMENT 77**  
TWO BEDROOM, TYPE 7

Living / Dining	3.46 x 4.43 m / 11'4" x 14'6"
Kitchen	2.54 x 2.80 m / 8'4" x 9'2"
Master Bedroom	2.76 x 4.87 m / 9'0" x 16'0"
Bedroom 2	2.55 x 3.32 m / 8'4" x 10'11"
<b>Total Internal Area</b>	<b>65.1 sq m / 700.2 sq ft</b>
Balcony	2.98 x 2.20 m / 9'9" x 7'3"
<b>Total Balcony Area</b>	<b>6.3 sq m / 68.0 sq ft</b>

**APARTMENT 78**  
SUITE, TYPE 8

Living / Dining	3.33 x 3.17 m / 10'11" x 10'5"
Kitchen	3.33 x 3.48 m / 10'11" x 11'5"
Bedroom	2.27 x 3.75 m / 7'5" x 12'4"
<b>Total Internal Area</b>	<b>41.6 sq m / 447.9 sq ft</b>
Balcony	3.21 x 1.52 m / 10'6" x 5'0"
<b>Total Balcony Area</b>	<b>5.0 sq m / 54.0 sq ft</b>

**APARTMENT 79**  
ONE BEDROOM, TYPE 9

Living / Dining	3.73 x 4.06 m / 12'3" x 13'4"
Kitchen	3.73 x 3.40 m / 12'3" x 11'2"
Master Bedroom	3.27 x 4.31 m / 10'9" x 14'2"
<b>Total Internal Area</b>	<b>54.7 sq m / 588.6 sq ft</b>
Balcony	3.71 x 1.50 m / 12'2" x 4'11"
<b>Total Balcony Area</b>	<b>5.3 sq m / 57.2 sq ft</b>

**APARTMENT 80**  
TWO BEDROOM, TYPE 10

Living / Dining	4.51 x 3.50 m / 14'9" x 11'6"
Kitchen	3.60 x 2.20 m / 11'10" x 7'3"
Master Bedroom	3.43 x 3.27 m / 11'3" x 10'9"
Bedroom 2	3.67 x 2.77 m / 12'0" x 9'1"
<b>Total Internal Area</b>	<b>71.7 sq m / 772.2 sq ft</b>
Balcony	3.19 x 2.27 m / 10'6" x 7'6"
<b>Total Balcony Area</b>	<b>7.3 sq m / 78.6 sq ft</b>

**APARTMENT 75**  
TWO BEDROOM, TYPE 5A

Living Room	3.30 x 4.24 m / 10'10" x 13'11"
Kitchen / Dining	3.28 x 2.24 m / 10'9" x 7'4"
Master Bedroom	2.98 x 4.88 m / 9'9" x 16'0"
Bedroom 2	3.28 x 3.85 m / 10'9" x 12'8"
<b>Total Internal Area</b>	<b>70.0 sq m / 753.1 sq ft</b>
Balcony	3.64 x 1.87 m / 11'11" x 6'2"
<b>Total Balcony Area</b>	<b>6.6 sq m / 70.5 sq ft</b>

**APARTMENT 76**  
TWO BEDROOM, TYPE 6

Living Room	4.03 x 2.98 m / 13'3" x 9'9"
Kitchen / Dining	4.36 x 3.11 m / 14'4" x 10'2"
Master Bedroom	3.04 x 3.04 m / 10'0" x 10'0"
Bedroom 2	2.75 x 3.61 m / 9'0" x 11'10"
<b>Total Internal Area</b>	<b>68.9 sq m / 742.0 sq ft</b>
Balcony	3.06 x 2.21 m / 10'1" x 7'3"
<b>Total Balcony Area</b>	<b>6.4 sq m / 68.4 sq ft</b>

**APARTMENT 71**  
TWO BEDROOM, TYPE 1A

Living / Dining	3.66 x 3.84 m / 12'0" x 12'7"
Kitchen	2.93 x 2.33 m / 9'7" x 7'8"
Master Bedroom	2.75 x 3.36 m / 9'0" x 11'0"
Bedroom 2	2.73 x 3.36 m / 8'11" x 11'0"
<b>Total Internal Area</b>	<b>68.8 sq m / 740.3 sq ft</b>
Balcony	2.94 x 2.19 m / 9'8" x 7'2"
<b>Total Balcony Area</b>	<b>6.5 sq m / 69.5 sq ft</b>

**APARTMENT 72**  
ONE BEDROOM, TYPE 2A

Living / Dining	3.54 x 4.35 m / 11'7" x 14'3"
Kitchen	3.54 x 3.15 m / 11'7" x 10'4"
Master Bedroom	2.83 x 4.38 m / 9'3" x 14'4"
<b>Total Internal Area</b>	<b>52.3 sq m / 563.3 sq ft</b>
Balcony	3.60 x 1.50 m / 11'10" x 4'11"
<b>Total Balcony Area</b>	<b>5.1 sq m / 54.8 sq ft</b>

**APARTMENT 73**  
SUITE, TYPE 3

Living / Dining	3.31 x 3.18 m / 10'10" x 10'5"
Kitchen	3.31 x 3.34 m / 10'10" x 10'11"
Bedroom	2.29 x 3.81 m / 7'6" x 12'6"
<b>Total Internal Area</b>	<b>41.0 sq m / 441.9 sq ft</b>
Balcony	3.06 x 1.66 m / 10'0" x 5'6"
<b>Total Balcony Area</b>	<b>5.0 sq m / 53.5 sq ft</b>

**APARTMENT 74**  
ONE BEDROOM, TYPE 4

Living Room	4.05 x 3.92 m / 13'3" x 12'10"
Kitchen / Dining	4.05 x 3.10 m / 13'3" x 10'2"
Master Bedroom	3.15 x 3.71 m / 10'4" x 12'2"
<b>Total Internal Area</b>	<b>51.8 sq m / 557.3 sq ft</b>
Balcony	3.60 x 1.49 m / 11'11" x 4'10"
<b>Total Balcony Area</b>	<b>5.4 sq m / 58.2 sq ft</b>



- ◄► Measurement points
- W Fitted wardrobe
- [W] Optional wardrobe
- W/D Washer/dryer
- U Utility cupboard
- C Coat cupboard

Floorplans are for approximate measurements only. Measurements may vary within a tolerance of 5%. The dimensions are not intended to be used for carpet sizes, appliance sizes or items of furniture. Furniture shown is not included.



**APARTMENT 95**  
TWO BEDROOM, TYPE 11

Living Room	3.70 x 3.38 m / 12'2" x 11'1"
Kitchen / Dining	3.72 x 2.39 m / 12'2" x 7'10"
Master Bedroom	2.74 x 4.67 m / 9'0" x 15'4"
Bedroom 2	2.52 x 3.59 m / 8'3" x 11'9"
<b>Total Internal Area</b>	<b>63.9 sq m / 688.1 sq ft</b>
Balcony	2.57 x 2.54 m / 8'5" x 8'4"
<b>Total Balcony Area</b>	<b>6.3 sq m / 68.2 sq ft</b>

**APARTMENT 96**  
TWO BEDROOM, TYPE 23

Living / Dining	3.30 x 4.26 m / 10'10" x 14'0"
Kitchen	3.08 x 2.88 m / 10'1" x 9'5"
Master Bedroom	3.01 x 3.04 m / 9'10" x 10'0"
Bedroom 2	3.33 x 3.69 m / 10'11" x 12'1"
<b>Total Internal Area</b>	<b>72.8 sq m / 783.5 sq ft</b>
Balcony	1.53 x 4.54 m / 5'0" x 14'11"
<b>Total Balcony Area</b>	<b>6.7 sq m / 72.1 sq ft</b>

**APARTMENT 97**  
TWO BEDROOM, TYPE 24

Living Room	4.35 x 3.26 m / 14'3" x 10'8"
Kitchen / Dining	4.04 x 2.59 m / 13'3" x 8'6"
Master Bedroom	3.00 x 4.90 m / 9'10" x 16'1"
Bedroom 2	3.00 x 3.53 m / 9'10" x 11'7"
<b>Total Internal Area</b>	<b>70.7 sq m / 760.6 sq ft</b>
Balcony	1.66 x 4.32 m / 5'5" x 14'2"
<b>Total Balcony Area</b>	<b>7.0 sq m / 75.6 sq ft</b>

**APARTMENT 98**  
TWO BEDROOM, TYPE 14A

Living / Dining	3.98 x 4.06 m / 13'1" x 13'4"
Kitchen	3.66 x 3.32 m / 12'0" x 10'11"
Master Bedroom	2.90 x 4.55 m / 9'6" x 14'11"
Bedroom 2	3.81 x 2.81 m / 12'6" x 9'3"
<b>Total Internal Area</b>	<b>70.9 sq m / 762.8 sq ft</b>
Balcony	4.36 x 1.54 m / 14'4" x 5'1"
<b>Total Balcony Area</b>	<b>6.4 sq m / 68.4 sq ft</b>

**APARTMENT 91**  
TWO BEDROOM, TYPE 7

Living / Dining	3.46 x 4.43 m / 11'4" x 14'6"
Kitchen	2.54 x 2.80 m / 8'4" x 9'2"
Master Bedroom	2.76 x 4.87 m / 9'0" x 16'0"
Bedroom 2	2.55 x 3.32 m / 8'4" x 10'11"
<b>Total Internal Area</b>	<b>65.1 sq m / 700.2 sq ft</b>
Balcony	2.98 x 2.20 m / 9'9" x 7'3"
<b>Total Balcony Area</b>	<b>6.3 sq m / 68.0 sq ft</b>

**APARTMENT 92**  
SUITE, TYPE 8

Living / Dining	3.33 x 3.17 m / 10'11" x 10'5"
Kitchen	3.33 x 3.48 m / 10'11" x 11'5"
Bedroom	2.27 x 3.75 m / 7'5" x 12'4"
<b>Total Internal Area</b>	<b>41.6 sq m / 447.9 sq ft</b>
Balcony	3.21 x 1.52 m / 10'6" x 5'0"
<b>Total Balcony Area</b>	<b>5.0 sq m / 54.0 sq ft</b>

**APARTMENT 93**  
ONE BEDROOM, TYPE 9

Living / Dining	3.73 x 4.06 m / 12'3" x 13'4"
Kitchen	3.73 x 3.40 m / 12'3" x 11'2"
Master Bedroom	3.27 x 4.31 m / 10'9" x 14'2"
<b>Total Internal Area</b>	<b>54.7 sq m / 588.6 sq ft</b>
Balcony	3.71 x 1.50 m / 12'2" x 4'11"
<b>Total Balcony Area</b>	<b>5.3 sq m / 57.2 sq ft</b>

**APARTMENT 94**  
TWO BEDROOM, TYPE 10

Living / Dining	4.51 x 3.50 m / 14'9" x 11'6"
Kitchen	3.60 x 2.20 m / 11'10" x 7'3"
Master Bedroom	3.43 x 3.27 m / 11'3" x 10'9"
Bedroom 2	3.67 x 2.77 m / 12'0" x 9'1"
<b>Total Internal Area</b>	<b>71.7 sq m / 772.2 sq ft</b>
Balcony	3.19 x 2.27 m / 10'6" x 7'6"
<b>Total Balcony Area</b>	<b>7.3 sq m / 78.6 sq ft</b>

**APARTMENT 89**  
TWO BEDROOM, TYPE 5A

Living Room	3.30 x 4.24 m / 10'10" x 13'11"
Kitchen / Dining	3.28 x 2.24 m / 10'9" x 7'4"
Master Bedroom	2.98 x 4.88 m / 9'9" x 16'0"
Bedroom 2	3.28 x 3.85 m / 10'9" x 12'8"
<b>Total Internal Area</b>	<b>70.0 sq m / 753.1 sq ft</b>
Balcony	3.64 x 1.87 m / 11'11" x 6'2"
<b>Total Balcony Area</b>	<b>6.6 sq m / 70.5 sq ft</b>

**APARTMENT 90**  
TWO BEDROOM, TYPE 6

Living Room	4.03 x 2.98 m / 13'3" x 9'9"
Kitchen / Dining	4.36 x 3.11 m / 14'4" x 10'2"
Master Bedroom	3.04 x 3.04 m / 10'0" x 10'0"
Bedroom 2	2.75 x 3.61 m / 9'0" x 11'10"
<b>Total Internal Area</b>	<b>68.9 sq m / 742.0 sq ft</b>
Balcony	3.06 x 2.21 m / 10'1" x 7'3"
<b>Total Balcony Area</b>	<b>6.4 sq m / 68.4 sq ft</b>

**APARTMENT 85**  
TWO BEDROOM, TYPE 1B

Living / Dining	3.66 x 3.84 m / 12'0" x 12'7"
Kitchen	2.93 x 2.33 m / 9'7" x 7'8"
Master Bedroom	2.75 x 3.36 m / 9'0" x 11'0"
Bedroom 2	2.75 x 3.36 m / 9'0" x 11'0"
<b>Total Internal Area</b>	<b>68.8 sq m / 740.3 sq ft</b>
Balcony	2.94 x 2.19 m / 9'8" x 7'2"
<b>Total Balcony Area</b>	<b>6.5 sq m / 69.5 sq ft</b>

**APARTMENT 86**  
ONE BEDROOM, TYPE 2B

Living / Dining	4.35 x 3.54 m / 14'3" x 11'7"
Kitchen	3.15 x 3.54 m / 10'4" x 11'7"
Master Bedroom	4.38 x 3.06 m / 14'4" x 10'0"
<b>Total Internal Area</b>	<b>52.3 sq m / 563.3 sq ft</b>
Balcony	3.60 x 1.50 m / 11'10" x 4'11"
<b>Total Balcony Area</b>	<b>5.1 sq m / 54.8 sq ft</b>

**APARTMENT 87**  
SUITE, TYPE 3

Living / Dining	3.31 x 3.18 m / 10'10" x 10'5"
Kitchen	3.31 x 3.34 m / 10'10" x 10'11"
Bedroom	2.29 x 3.81 m / 7'6" x 12'6"
<b>Total Internal Area</b>	<b>41.0 sq m / 441.9 sq ft</b>
Balcony	3.06 x 1.66 m / 10'0" x 5'6"
<b>Total Balcony Area</b>	<b>5.0 sq m / 53.5 sq ft</b>

**APARTMENT 88**  
ONE BEDROOM, TYPE 4

Living Room	4.05 x 3.92 m / 13'3" x 12'10"
Kitchen / Dining	4.05 x 3.10 m / 13'3" x 10'2"
Master Bedroom	3.15 x 3.71 m / 10'4" x 12'2"
<b>Total Internal Area</b>	<b>51.8 sq m / 557.3 sq ft</b>
Balcony	3.60 x 1.49 m / 11'11" x 4'10"
<b>Total Balcony Area</b>	<b>5.4 sq m / 58.2 sq ft</b>



110

111

112

99

100

101

102

103

107

106

105

104

108

109

- ◄► Measurement points
- W Fitted wardrobe
- [W] Optional wardrobe
- W/D Washer/dryer
- U Utility cupboard
- C Coat cupboard

Floorplans are for approximate measurements only. Measurements may vary within a tolerance of 5%. The dimensions are not intended to be used for carpet sizes, appliance sizes or items of furniture. Furniture shown is not included.



**APARTMENT 109**  
TWO BEDROOM, TYPE 11

Living Room	3.70 x 3.38 m / 12'2" x 11'1"
Kitchen / Dining	3.72 x 2.39 m / 12'2" x 7'10"
Master Bedroom	2.74 x 4.67 m / 9'0" x 15'4"
Bedroom 2	2.52 x 3.59 m / 8'3" x 11'9"
<b>Total Internal Area</b>	<b>63.9 sq m / 688.1 sq ft</b>
Balcony	2.57 x 2.54 m / 8'5" x 8'4"
<b>Total Balcony Area</b>	<b>6.3 sq m / 68.2 sq ft</b>

**APARTMENT 110**  
TWO BEDROOM, TYPE 23A

Living Room	3.33 x 4.26 m / 10'11" x 14'0"
Kitchen	3.05 x 2.87 m / 10'0" x 9'5"
Master Bedroom	3.01 x 3.04 m / 9'10" x 10'0"
Bedroom 2	3.33 x 3.69 m / 10'11" x 12'1"
<b>Total Internal Area</b>	<b>72.8 sq m / 783.5 sq ft</b>
Balcony	1.53 x 4.54 m / 5'0" x 14'11"
<b>Total Balcony Area</b>	<b>6.7 sq m / 72.1 sq ft</b>

**APARTMENT 111**  
TWO BEDROOM, TYPE 24A

Living Room	4.35 x 3.29 m / 14'3" x 10'9"
Kitchen / Dining	4.04 x 2.58 m / 13'3" x 8'6"
Master Bedroom	3.00 x 4.90 m / 9'10" x 16'1"
Bedroom 2	3.00 x 3.53 m / 9'10" x 11'7"
<b>Total Internal Area</b>	<b>70.7 sq m / 760.6 sq ft</b>
Balcony	1.66 x 4.32 m / 5'5" x 14'2"
<b>Total Balcony Area</b>	<b>7.0 sq m / 75.6 sq ft</b>

**APARTMENT 112**  
TWO BEDROOM, TYPE 14A

Living / Dining	3.98 x 4.06 m / 13'1" x 13'4"
Kitchen	3.66 x 3.32 m / 12'0" x 10'11"
Master Bedroom	2.90 x 4.55 m / 9'6" x 14'11"
Bedroom 2	3.81 x 2.81 m / 12'6" x 9'3"
<b>Total Internal Area</b>	<b>70.9 sq m / 762.8 sq ft</b>
Balcony	4.36 x 1.54 m / 14'4" x 5'1"
<b>Total Balcony Area</b>	<b>6.4 sq m / 68.4 sq ft</b>

**APARTMENT 105**  
TWO BEDROOM, TYPE 7

Living / Dining	3.46 x 4.43 m / 11'4" x 14'6"
Kitchen	2.54 x 2.80 m / 8'4" x 9'2"
Master Bedroom	2.76 x 4.87 m / 9'0" x 16'0"
Bedroom 2	2.55 x 3.32 m / 8'4" x 10'11"
<b>Total Internal Area</b>	<b>65.1 sq m / 700.2 sq ft</b>
Balcony	2.98 x 2.20 m / 9'9" x 7'3"
<b>Total Balcony Area</b>	<b>6.3 sq m / 68.0 sq ft</b>

**APARTMENT 106**  
SUITE, TYPE 8

Living / Dining	3.33 x 3.17 m / 10'11" x 10'5"
Kitchen	3.33 x 3.48 m / 10'11" x 11'5"
Bedroom	2.27 x 3.75 m / 7'5" x 12'4"
<b>Total Internal Area</b>	<b>41.6 sq m / 447.9 sq ft</b>
Balcony	3.21 x 1.52 m / 10'6" x 5'0"
<b>Total Balcony Area</b>	<b>5.0 sq m / 54.0 sq ft</b>

**APARTMENT 107**  
ONE BEDROOM, TYPE 9

Living / Dining	3.73 x 4.06 m / 12'3" x 13'4"
Kitchen	3.73 x 3.40 m / 12'3" x 11'2"
Master Bedroom	3.27 x 4.31 m / 10'9" x 14'2"
<b>Total Internal Area</b>	<b>54.7 sq m / 588.6 sq ft</b>
Balcony	3.71 x 1.50 m / 12'2" x 4'11"
<b>Total Balcony Area</b>	<b>5.3 sq m / 57.2 sq ft</b>

**APARTMENT 108**  
TWO BEDROOM, TYPE 10

Living / Dining	4.51 x 3.50 m / 14'9" x 11'6"
Kitchen	3.60 x 2.20 m / 11'10" x 7'3"
Master Bedroom	3.43 x 3.27 m / 11'3" x 10'9"
Bedroom 2	3.67 x 2.77 m / 12'0" x 9'1"
<b>Total Internal Area</b>	<b>71.7 sq m / 772.2 sq ft</b>
Balcony	3.19 x 2.27 m / 10'6" x 7'6"
<b>Total Balcony Area</b>	<b>7.3 sq m / 78.6 sq ft</b>

**APARTMENT 103**  
TWO BEDROOM, TYPE 5A

Living Room	3.30 x 4.24 m / 10'10" x 13'11"
Kitchen / Dining	3.28 x 2.24 m / 10'9" x 7'4"
Master Bedroom	2.98 x 4.88 m / 9'9" x 16'0"
Bedroom 2	3.28 x 3.85 m / 10'9" x 12'8"
<b>Total Internal Area</b>	<b>70.0 sq m / 753.1 sq ft</b>
Balcony	3.64 x 1.87 m / 11'11" x 6'2"
<b>Total Balcony Area</b>	<b>6.6 sq m / 70.5 sq ft</b>

**APARTMENT 104**  
TWO BEDROOM, TYPE 6

Living Room	4.03 x 2.98 m / 13'3" x 9'9"
Kitchen / Dining	4.36 x 3.11 m / 14'4" x 10'2"
Master Bedroom	3.04 x 3.04 m / 10'0" x 10'0"
Bedroom 2	2.75 x 3.61 m / 9'0" x 11'10"
<b>Total Internal Area</b>	<b>68.9 sq m / 742.0 sq ft</b>
Balcony	3.06 x 2.21 m / 10'1" x 7'3"
<b>Total Balcony Area</b>	<b>6.4 sq m / 68.4 sq ft</b>

**APARTMENT 99**  
TWO BEDROOM, TYPE 1A

Living / Dining	3.66 x 3.84 m / 12'0" x 12'7"
Kitchen	2.93 x 2.33 m / 9'7" x 7'8"
Master Bedroom	2.75 x 3.36 m / 9'0" x 11'0"
Bedroom 2	2.73 x 3.36 m / 8'11" x 11'0"
<b>Total Internal Area</b>	<b>68.8 sq m / 740.3 sq ft</b>
Balcony	2.94 x 2.19 m / 9'8" x 7'2"
<b>Total Balcony Area</b>	<b>6.5 sq m / 69.5 sq ft</b>

**APARTMENT 100**  
ONE BEDROOM, TYPE 2A

Living / Dining	3.54 x 4.35 m / 11'7" x 14'3"
Kitchen	3.54 x 3.15 m / 11'7" x 10'4"
Master Bedroom	2.83 x 4.38 m / 9'3" x 14'4"
<b>Total Internal Area</b>	<b>52.3 sq m / 563.3 sq ft</b>
Balcony	3.60 x 1.50 m / 11'10" x 4'11"
<b>Total Balcony Area</b>	<b>5.1 sq m / 54.8 sq ft</b>

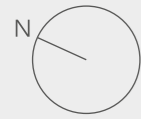
**APARTMENT 101**  
SUITE, TYPE 3

Living / Dining	3.31 x 3.18 m / 10'10" x 10'5"
Kitchen	3.31 x 3.34 m / 10'10" x 10'11"
Bedroom	2.29 x 3.81 m / 7'6" x 12'6"
<b>Total Internal Area</b>	<b>41.0 sq m / 441.9 sq ft</b>
Balcony	3.06 x 1.66 m / 10'0" x 5'6"
<b>Total Balcony Area</b>	<b>5.0 sq m / 53.5 sq ft</b>

**APARTMENT 102**  
ONE BEDROOM, TYPE 4

Living Room	4.05 x 3.92 m / 13'3" x 12'10"
Kitchen / Dining	4.05 x 3.10 m / 13'3" x 10'2"
Master Bedroom	3.15 x 3.71 m / 10'4" x 12'2"
<b>Total Internal Area</b>	<b>51.8 sq m / 557.3 sq ft</b>
Balcony	3.60 x 1.49 m / 11'11" x 4'10"
<b>Total Balcony Area</b>	<b>5.4 sq m / 58.2 sq ft</b>





124

125

126

113

114

115

116

117

121

120

119

118

122

- ◄► Measurement points
- W Fitted wardrobe
- [W] Optional wardrobe
- W/D Washer/dryer
- U Utility cupboard
- C Coat cupboard

Floorplans are for approximate measurements only. Measurements may vary within a tolerance of 5%. The dimensions are not intended to be used for carpet sizes, appliance sizes or items of furniture. Furniture shown is not included.



**APARTMENT 123**  
TWO BEDROOM, TYPE 11

Living Room	3.70 x 3.38 m / 12'2" x 11'1"
Kitchen / Dining	3.72 x 2.39 m / 12'2" x 7'10"
Master Bedroom	2.74 x 4.67 m / 9'0" x 15'4"
Bedroom 2	2.52 x 3.59 m / 8'3" x 11'9"
<b>Total Internal Area</b>	<b>63.9 sq m / 688.1 sq ft</b>
Balcony	2.57 x 2.54 m / 8'5" x 8'4"
<b>Total Balcony Area</b>	<b>6.3 sq m / 68.2 sq ft</b>

**APARTMENT 124**  
TWO BEDROOM, TYPE 23

Living / Dining	3.30 x 4.26 m / 10'10" x 14'0"
Kitchen	3.08 x 2.88 m / 10'1" x 9'5"
Master Bedroom	3.01 x 3.04 m / 9'10" x 10'0"
Bedroom 2	3.33 x 3.69 m / 10'11" x 12'1"
<b>Total Internal Area</b>	<b>72.8 sq m / 783.5 sq ft</b>
Balcony	1.53 x 4.54 m / 5'0" x 14'11"
<b>Total Balcony Area</b>	<b>6.7 sq m / 72.1 sq ft</b>

**APARTMENT 125**  
TWO BEDROOM, TYPE 24

Living Room	4.35 x 3.26 m / 14'3" x 10'8"
Kitchen / Dining	4.04 x 2.59 m / 13'3" x 8'6"
Master Bedroom	3.00 x 4.90 m / 9'10" x 16'1"
Bedroom 2	3.00 x 3.53 m / 9'10" x 11'7"
<b>Total Internal Area</b>	<b>70.7 sq m / 760.6 sq ft</b>
Balcony	1.66 x 4.32 m / 5'5" x 14'2"
<b>Total Balcony Area</b>	<b>7.0 sq m / 75.6 sq ft</b>

**APARTMENT 126**  
TWO BEDROOM, TYPE 14A

Living / Dining	3.98 x 4.06 m / 13'1" x 13'4"
Kitchen	3.66 x 3.32 m / 12'0" x 10'11"
Master Bedroom	2.90 x 4.55 m / 9'6" x 14'11"
Bedroom 2	3.81 x 2.81 m / 12'6" x 9'3"
<b>Total Internal Area</b>	<b>70.9 sq m / 762.8 sq ft</b>
Balcony	4.36 x 1.54 m / 14'4" x 5'1"
<b>Total Balcony Area</b>	<b>6.4 sq m / 68.4 sq ft</b>

**APARTMENT 119**  
TWO BEDROOM, TYPE 7

Living / Dining	3.46 x 4.43 m / 11'4" x 14'6"
Kitchen	2.54 x 2.80 m / 8'4" x 9'2"
Master Bedroom	2.76 x 4.87 m / 9'0" x 16'0"
Bedroom 2	2.55 x 3.32 m / 8'4" x 10'11"
<b>Total Internal Area</b>	<b>65.1 sq m / 700.2 sq ft</b>
Balcony	2.98 x 2.20 m / 9'9" x 7'3"
<b>Total Balcony Area</b>	<b>6.3 sq m / 68.0 sq ft</b>

**APARTMENT 120**  
SUITE, TYPE 8

Living / Dining	3.33 x 3.17 m / 10'11" x 10'5"
Kitchen	3.33 x 3.48 m / 10'11" x 11'5"
Bedroom	2.27 x 3.75 m / 7'5" x 12'4"
<b>Total Internal Area</b>	<b>41.6 sq m / 447.9 sq ft</b>
Balcony	3.21 x 1.52 m / 10'6" x 5'0"
<b>Total Balcony Area</b>	<b>5.0 sq m / 54.0 sq ft</b>

**APARTMENT 121**  
ONE BEDROOM, TYPE 9

Living / Dining	3.73 x 4.06 m / 12'3" x 13'4"
Kitchen	3.73 x 3.40 m / 12'3" x 11'2"
Master Bedroom	3.27 x 4.31 m / 10'9" x 14'2"
<b>Total Internal Area</b>	<b>54.7 sq m / 588.6 sq ft</b>
Balcony	3.71 x 1.50 m / 12'2" x 4'11"
<b>Total Balcony Area</b>	<b>5.3 sq m / 57.2 sq ft</b>

**APARTMENT 122**  
TWO BEDROOM, TYPE 10

Living / Dining	4.51 x 3.50 m / 14'9" x 11'6"
Kitchen	3.60 x 2.20 m / 11'10" x 7'3"
Master Bedroom	3.43 x 3.27 m / 11'3" x 10'9"
Bedroom 2	3.67 x 2.77 m / 12'0" x 9'1"
<b>Total Internal Area</b>	<b>71.7 sq m / 772.2 sq ft</b>
Balcony	3.19 x 2.27 m / 10'6" x 7'6"
<b>Total Balcony Area</b>	<b>7.3 sq m / 78.6 sq ft</b>

**APARTMENT 117**  
TWO BEDROOM, TYPE 5A

Living Room	3.30 x 4.24 m / 10'10" x 13'11"
Kitchen / Dining	3.28 x 2.24 m / 10'9" x 7'4"
Master Bedroom	2.98 x 4.88 m / 9'9" x 16'0"
Bedroom 2	3.28 x 3.85 m / 10'9" x 12'8"
<b>Total Internal Area</b>	<b>70.0 sq m / 753.1 sq ft</b>
Balcony	3.64 x 1.87 m / 11'11" x 6'2"
<b>Total Balcony Area</b>	<b>6.6 sq m / 70.5 sq ft</b>

**APARTMENT 118**  
TWO BEDROOM, TYPE 6

Living Room	4.03 x 2.98 m / 13'3" x 9'9"
Kitchen / Dining	4.36 x 3.11 m / 14'4" x 10'2"
Master Bedroom	3.04 x 3.04 m / 10'0" x 10'0"
Bedroom 2	2.75 x 3.61 m / 9'0" x 11'10"
<b>Total Internal Area</b>	<b>68.9 sq m / 742.0 sq ft</b>
Balcony	3.06 x 2.21 m / 10'1" x 7'3"
<b>Total Balcony Area</b>	<b>6.4 sq m / 68.4 sq ft</b>

**APARTMENT 113**  
TWO BEDROOM, TYPE 1B

Living / Dining	3.66 x 3.84 m / 12'0" x 12'7"
Kitchen	2.93 x 2.33 m / 9'7" x 7'8"
Master Bedroom	2.75 x 3.36 m / 9'0" x 11'0"
Bedroom 2	2.75 x 3.36 m / 9'0" x 11'0"
<b>Total Internal Area</b>	<b>68.8 sq m / 740.3 sq ft</b>
Balcony	2.94 x 2.19 m / 9'8" x 7'2"
<b>Total Balcony Area</b>	<b>6.5 sq m / 69.5 sq ft</b>

**APARTMENT 114,**  
ONE BEDROOM, TYPE 2B

Living / Dining	4.35 x 3.54 m / 14'3" x 11'7"
Kitchen	3.15 x 3.54 m / 10'4" x 11'7"
Master Bedroom	4.38 x 3.06 m / 14'4" x 10'0"
<b>Total Internal Area</b>	<b>52.3 sq m / 563.3 sq ft</b>
Balcony	3.60 x 1.50 m / 11'10" x 4'11"
<b>Total Balcony Area</b>	<b>5.1 sq m / 54.8 sq ft</b>

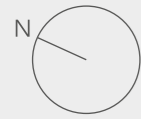
**APARTMENT 115**  
SUITE, TYPE 3

Living / Dining	3.31 x 3.18 m / 10'10" x 10'5"
Kitchen	3.31 x 3.34 m / 10'10" x 10'11"
Bedroom	2.29 x 3.81 m / 7'6" x 12'6"
<b>Total Internal Area</b>	<b>41.0 sq m / 441.9 sq ft</b>
Balcony	3.06 x 1.66 m / 10'0" x 5'6"
<b>Total Balcony Area</b>	<b>5.0 sq m / 53.5 sq ft</b>

**APARTMENT 116**  
ONE BEDROOM, TYPE 4

Living Room	4.05 x 3.92 m / 13'3" x 12'10"
Kitchen / Dining	4.05 x 3.10 m / 13'3" x 10'2"
Master Bedroom	3.15 x 3.71 m / 10'4" x 12'2"
<b>Total Internal Area</b>	<b>51.8 sq m / 557.3 sq ft</b>
Balcony	3.60 x 1.49 m / 11'11" x 4'10"
<b>Total Balcony Area</b>	<b>5.4 sq m / 58.2 sq ft</b>

FLOOR 10



138

139

140

127

128

129

130

131

135

134

133

132

136

137

- ◄► Measurement points
- W Fitted wardrobe
- [W] Optional wardrobe
- W/D Washer/dryer
- U Utility cupboard
- C Coat cupboard

Floorplans are for approximate measurements only. Measurements may vary within a tolerance of 5%. The dimensions are not intended to be used for carpet sizes, appliance sizes or items of furniture. Furniture shown is not included.



**APARTMENT 137**  
TWO BEDROOM, TYPE 11

Living Room	3.70 x 3.38 m / 12'2" x 11'1"
Kitchen / Dining	3.72 x 2.39 m / 12'2" x 7'10"
Master Bedroom	2.74 x 4.67 m / 9'0" x 15'4"
Bedroom 2	2.52 x 3.59 m / 8'3" x 11'9"
<b>Total Internal Area</b>	<b>63.9 sq m / 688.1 sq ft</b>
Balcony	2.57 x 2.54 m / 8'5" x 8'4"
<b>Total Balcony Area</b>	<b>6.3 sq m / 68.2 sq ft</b>

**APARTMENT 138**  
TWO BEDROOM, TYPE 23A

Living Room	3.33 x 4.26 m / 10'11" x 14'0"
Kitchen	3.05 x 2.87 m / 10'0" x 9'5"
Master Bedroom	3.01 x 3.04 m / 9'10" x 10'0"
Bedroom 2	3.33 x 3.69 m / 10'11" x 12'1"
<b>Total Internal Area</b>	<b>72.8 sq m / 783.5 sq ft</b>
Balcony	1.53 x 4.54 m / 5'0" x 14'11"
<b>Total Balcony Area</b>	<b>6.7 sq m / 72.1 sq ft</b>

**APARTMENT 139**  
TWO BEDROOM, TYPE 24A

Living Room	4.35 x 3.29 m / 14'3" x 10'9"
Kitchen / Dining	4.04 x 2.58 m / 13'3" x 8'6"
Master Bedroom	3.00 x 4.90 m / 9'10" x 16'1"
Bedroom 2	3.00 x 3.53 m / 9'10" x 11'7"
<b>Total Internal Area</b>	<b>70.7 sq m / 760.6 sq ft</b>
Balcony	1.66 x 4.32 m / 5'5" x 14'2"
<b>Total Balcony Area</b>	<b>7.0 sq m / 75.6 sq ft</b>

**APARTMENT 140**  
TWO BEDROOM, TYPE 14A

Living / Dining	3.98 x 4.06 m / 13'1" x 13'4"
Kitchen	3.66 x 3.32 m / 12'0" x 10'11"
Master Bedroom	2.90 x 4.55 m / 9'6" x 14'11"
Bedroom 2	3.81 x 2.81 m / 12'6" x 9'3"
<b>Total Internal Area</b>	<b>70.9 sq m / 762.8 sq ft</b>
Balcony	4.36 x 1.54 m / 14'4" x 5'1"
<b>Total Balcony Area</b>	<b>6.4 sq m / 68.4 sq ft</b>

**APARTMENT 133**  
TWO BEDROOM, TYPE 7

Living / Dining	3.46 x 4.43 m / 11'4" x 14'6"
Kitchen	2.54 x 2.80 m / 8'4" x 9'2"
Master Bedroom	2.76 x 4.87 m / 9'0" x 16'0"
Bedroom 2	2.55 x 3.32 m / 8'4" x 10'11"
<b>Total Internal Area</b>	<b>65.1 sq m / 700.2 sq ft</b>
Balcony	2.98 x 2.20 m / 9'9" x 7'3"
<b>Total Balcony Area</b>	<b>6.3 sq m / 68.0 sq ft</b>

**APARTMENT 134**  
SUITE, TYPE 8

Living / Dining	3.33 x 3.17 m / 10'11" x 10'5"
Kitchen	3.33 x 3.48 m / 10'11" x 11'5"
Bedroom	2.27 x 3.75 m / 7'5" x 12'4"
<b>Total Internal Area</b>	<b>41.6 sq m / 447.9 sq ft</b>
Balcony	3.21 x 1.52 m / 10'6" x 5'0"
<b>Total Balcony Area</b>	<b>5.0 sq m / 54.0 sq ft</b>

**APARTMENT 135**  
ONE BEDROOM, TYPE 9

Living / Dining	3.73 x 4.06 m / 12'3" x 13'4"
Kitchen	3.73 x 3.40 m / 12'3" x 11'2"
Master Bedroom	3.27 x 4.31 m / 10'9" x 14'2"
<b>Total Internal Area</b>	<b>54.7 sq m / 588.6 sq ft</b>
Balcony	3.71 x 1.50 m / 12'2" x 4'11"
<b>Total Balcony Area</b>	<b>5.3 sq m / 57.2 sq ft</b>

**APARTMENT 136**  
TWO BEDROOM, TYPE 10

Living / Dining	4.51 x 3.50 m / 14'9" x 11'6"
Kitchen	3.60 x 2.20 m / 11'10" x 7'3"
Master Bedroom	3.43 x 3.27 m / 11'3" x 10'9"
Bedroom 2	3.67 x 2.77 m / 12'0" x 9'1"
<b>Total Internal Area</b>	<b>71.7 sq m / 772.2 sq ft</b>
Balcony	3.19 x 2.27 m / 10'6" x 7'6"
<b>Total Balcony Area</b>	<b>7.3 sq m / 78.6 sq ft</b>

**APARTMENT 131**  
TWO BEDROOM, TYPE 5B

Living Room	3.35 x 4.24 m / 11'0" x 13'11"
Kitchen / Dining	2.97 x 2.24 m / 9'9" x 7'4"
Master Bedroom	3.31 x 3.18 m / 10'10" x 10'5"
Bedroom 2	3.23 x 3.85 m / 10'7" x 12'8"
<b>Total Internal Area</b>	<b>69.1 sq m / 743.4 sq ft</b>
Balcony	3.64 x 1.87 m / 11'11" x 6'2"
<b>Total Balcony Area</b>	<b>6.6 sq m / 70.5 sq ft</b>

**APARTMENT 132**  
TWO BEDROOM, TYPE 6

Living Room	4.03 x 2.98 m / 13'3" x 9'9"
Kitchen / Dining	4.36 x 3.11 m / 14'4" x 10'2"
Master Bedroom	3.04 x 3.04 m / 10'0" x 10'0"
Bedroom 2	2.75 x 3.61 m / 9'0" x 11'10"
<b>Total Internal Area</b>	<b>68.9 sq m / 742.0 sq ft</b>
Balcony	3.06 x 2.21 m / 10'1" x 7'3"
<b>Total Balcony Area</b>	<b>6.4 sq m / 68.4 sq ft</b>

**APARTMENT 127**  
TWO BEDROOM, TYPE 1A

Living / Dining	3.66 x 3.84 m / 12'0" x 12'7"
Kitchen	2.93 x 2.33 m / 9'7" x 7'8"
Master Bedroom	2.75 x 3.36 m / 9'0" x 11'0"
Bedroom 2	2.73 x 3.36 m / 8'11" x 11'0"
<b>Total Internal Area</b>	<b>68.8 sq m / 740.3 sq ft</b>
Balcony	2.94 x 2.19 m / 9'8" x 7'2"
<b>Total Balcony Area</b>	<b>6.5 sq m / 69.5 sq ft</b>

**APARTMENT 128**  
ONE BEDROOM, TYPE 2A

Living / Dining	3.54 x 4.35 m / 11'7" x 14'3"
Kitchen	3.54 x 3.15 m / 11'7" x 10'4"
Master Bedroom	2.83 x 4.38 m / 9'3" x 14'4"
<b>Total Internal Area</b>	<b>52.3 sq m / 563.3 sq ft</b>
Balcony	3.60 x 1.50 m / 11'10" x 4'11"
<b>Total Balcony Area</b>	<b>5.1 sq m / 54.8 sq ft</b>

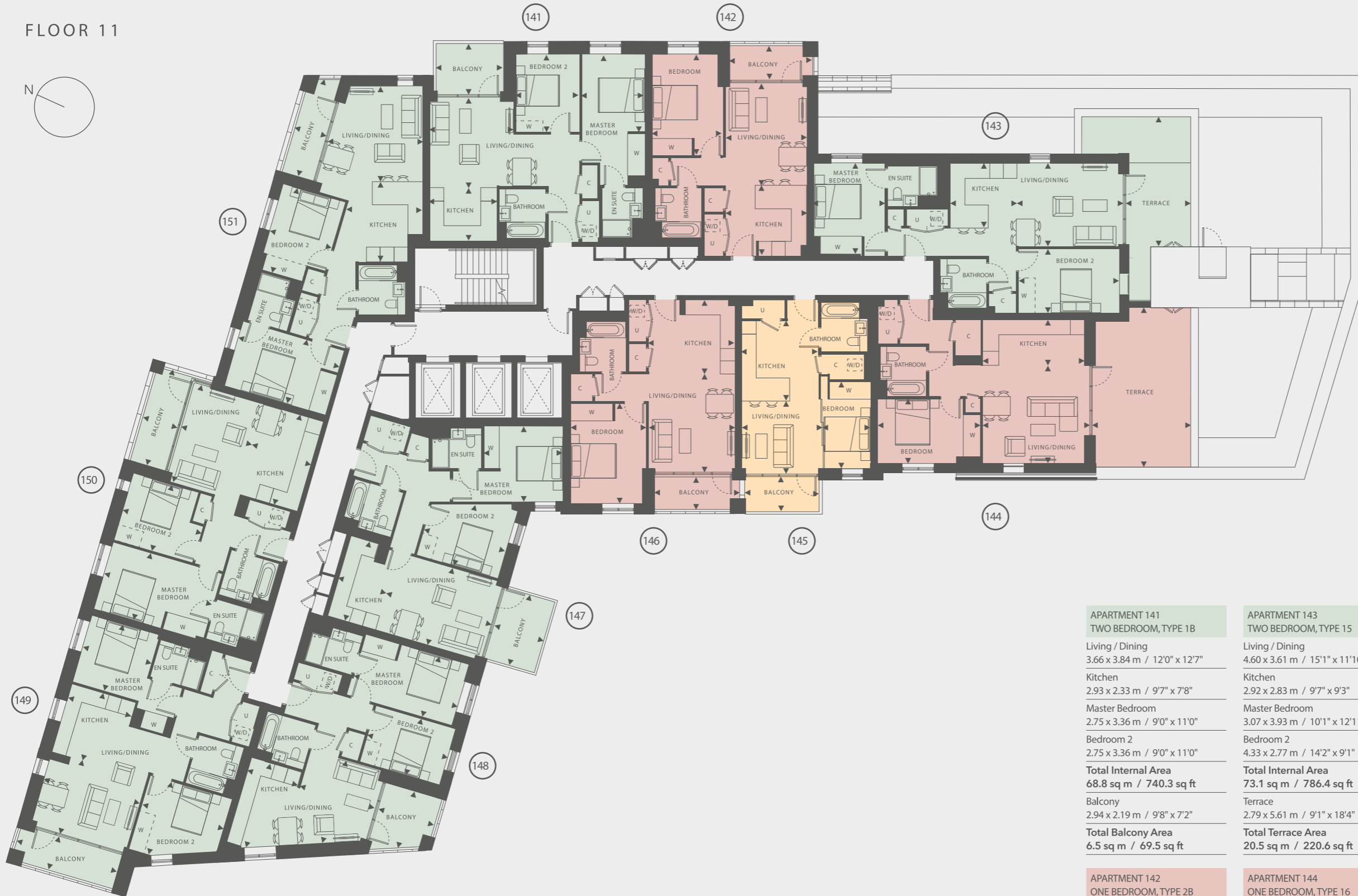
**APARTMENT 129**  
SUITE, TYPE 3

Living / Dining	3.31 x 3.18 m / 10'10" x 10'5"
Kitchen	3.31 x 3.34 m / 10'10" x 10'11"
Bedroom	2.29 x 3.81 m / 7'6" x 12'6"
<b>Total Internal Area</b>	<b>41.0 sq m / 441.9 sq ft</b>
Balcony	3.06 x 1.66 m / 10'0" x 5'6"
<b>Total Balcony Area</b>	<b>5.0 sq m / 53.5 sq ft</b>

**APARTMENT 130**  
ONE BEDROOM, TYPE 4

Living Room	4.05 x 3.92 m / 13'3" x 12'10"
Kitchen / Dining	4.05 x 3.10 m / 13'3" x 10'2"
Master Bedroom	3.15 x 3.71 m / 10'4" x 12'2"
<b>Total Internal Area</b>	<b>51.8 sq m / 557.3 sq ft</b>
Balcony	3.60 x 1.49 m / 11'11" x 4'10"
<b>Total Balcony Area</b>	<b>5.4 sq m / 58.2 sq ft</b>

FLOOR 11



- ◄► Measurement points
- W Fitted wardrobe
- [W] Optional wardrobe
- W/D Washer/dryer
- U Utility cupboard
- C Coat cupboard

Floorplans are for approximate measurements only. Measurements may vary within a tolerance of 5%. The dimensions are not intended to be used for carpet sizes, appliance sizes or items of furniture. Furniture shown is not included.



**APARTMENT 148**  
TWO BEDROOM, TYPE 11

Living Room	3.70 x 3.38 m / 12'2" x 11'1"
Kitchen / Dining	3.72 x 2.39 m / 12'2" x 7'10"
Master Bedroom	2.74 x 4.67 m / 9'0" x 15'4"
Bedroom 2	2.52 x 3.59 m / 8'3" x 11'9"
<b>Total Internal Area</b>	<b>63.9 sq m / 688.1 sq ft</b>
Balcony	2.57 x 2.54 m / 8'5" x 8'4"
<b>Total Balcony Area</b>	<b>6.3 sq m / 68.2 sq ft</b>

**APARTMENT 149**  
TWO BEDROOM, TYPE 23

Living / Dining	3.30 x 4.26 m / 10'10" x 14'0"
Kitchen	3.08 x 2.88 m / 10'1" x 9'5"
Master Bedroom	3.01 x 3.04 m / 9'10" x 10'0"
Bedroom 2	3.33 x 3.69 m / 10'11" x 12'1"
<b>Total Internal Area</b>	<b>72.8 sq m / 783.5 sq ft</b>
Balcony	1.53 x 4.54 m / 5'0" x 14'11"
<b>Total Balcony Area</b>	<b>6.7 sq m / 72.1 sq ft</b>

**APARTMENT 150**  
TWO BEDROOM, TYPE 24

Living Room	4.35 x 3.26 m / 14'3" x 10'8"
Kitchen / Dining	4.04 x 2.59 m / 13'3" x 8'6"
Master Bedroom	3.00 x 4.90 m / 9'10" x 16'1"
Bedroom 2	3.00 x 3.53 m / 9'10" x 11'7"
<b>Total Internal Area</b>	<b>70.7 sq m / 760.6 sq ft</b>
Balcony	1.66 x 4.32 m / 5'5" x 14'2"
<b>Total Balcony Area</b>	<b>7.0 sq m / 75.6 sq ft</b>

**APARTMENT 151**  
TWO BEDROOM, TYPE 14A

Living / Dining	3.98 x 4.06 m / 13'1" x 13'4"
Kitchen	3.66 x 3.32 m / 12'0" x 10'11"
Master Bedroom	2.90 x 4.55 m / 9'6" x 14'11"
Bedroom 2	3.81 x 2.81 m / 12'6" x 9'3"
<b>Total Internal Area</b>	<b>70.9 sq m / 762.8 sq ft</b>
Balcony	4.36 x 1.54 m / 14'4" x 5'1"
<b>Total Balcony Area</b>	<b>6.4 sq m / 68.4 sq ft</b>

**APARTMENT 145**  
SUITE, TYPE 8

Living / Dining	3.33 x 3.17 m / 10'11" x 10'5"
Kitchen	3.33 x 3.48 m / 10'11" x 11'5"
Bedroom	2.27 x 3.75 m / 7'5" x 12'4"
<b>Total Internal Area</b>	<b>41.6 sq m / 447.9 sq ft</b>
Balcony	3.21 x 1.52 m / 10'6" x 5'0"
<b>Total Balcony Area</b>	<b>5.0 sq m / 54.0 sq ft</b>

**APARTMENT 146**  
ONE BEDROOM, TYPE 9

Living / Dining	3.73 x 4.06 m / 12'3" x 13'4"
Kitchen	3.73 x 3.40 m / 12'3" x 11'2"
Master Bedroom	3.27 x 4.31 m / 10'9" x 14'2"
<b>Total Internal Area</b>	<b>54.7 sq m / 588.6 sq ft</b>
Balcony	3.71 x 1.50 m / 12'2" x 4'11"
<b>Total Balcony Area</b>	<b>5.3 sq m / 57.2 sq ft</b>

**APARTMENT 147**  
TWO BEDROOM, TYPE 10

Living / Dining	4.51 x 3.50 m / 14'9" x 11'6"
Kitchen	3.60 x 2.20 m / 11'10" x 7'3"
Master Bedroom	3.43 x 3.27 m / 11'3" x 10'9"
Bedroom 2	3.67 x 2.77 m / 12'0" x 9'1"
<b>Total Internal Area</b>	<b>71.7 sq m / 772.2 sq ft</b>
Balcony	3.19 x 2.27 m / 10'6" x 7'6"
<b>Total Balcony Area</b>	<b>7.3 sq m / 78.6 sq ft</b>

**APARTMENT 141**  
TWO BEDROOM, TYPE 1B

Living / Dining	3.66 x 3.84 m / 12'0" x 12'7"
Kitchen	2.93 x 2.33 m / 9'7" x 7'8"
Master Bedroom	2.75 x 3.36 m / 9'0" x 11'0"
Bedroom 2	2.75 x 3.36 m / 9'0" x 11'0"
<b>Total Internal Area</b>	<b>68.8 sq m / 740.3 sq ft</b>
Balcony	2.94 x 2.19 m / 9'8" x 7'2"
<b>Total Balcony Area</b>	<b>6.5 sq m / 69.5 sq ft</b>

**APARTMENT 142**  
ONE BEDROOM, TYPE 2B

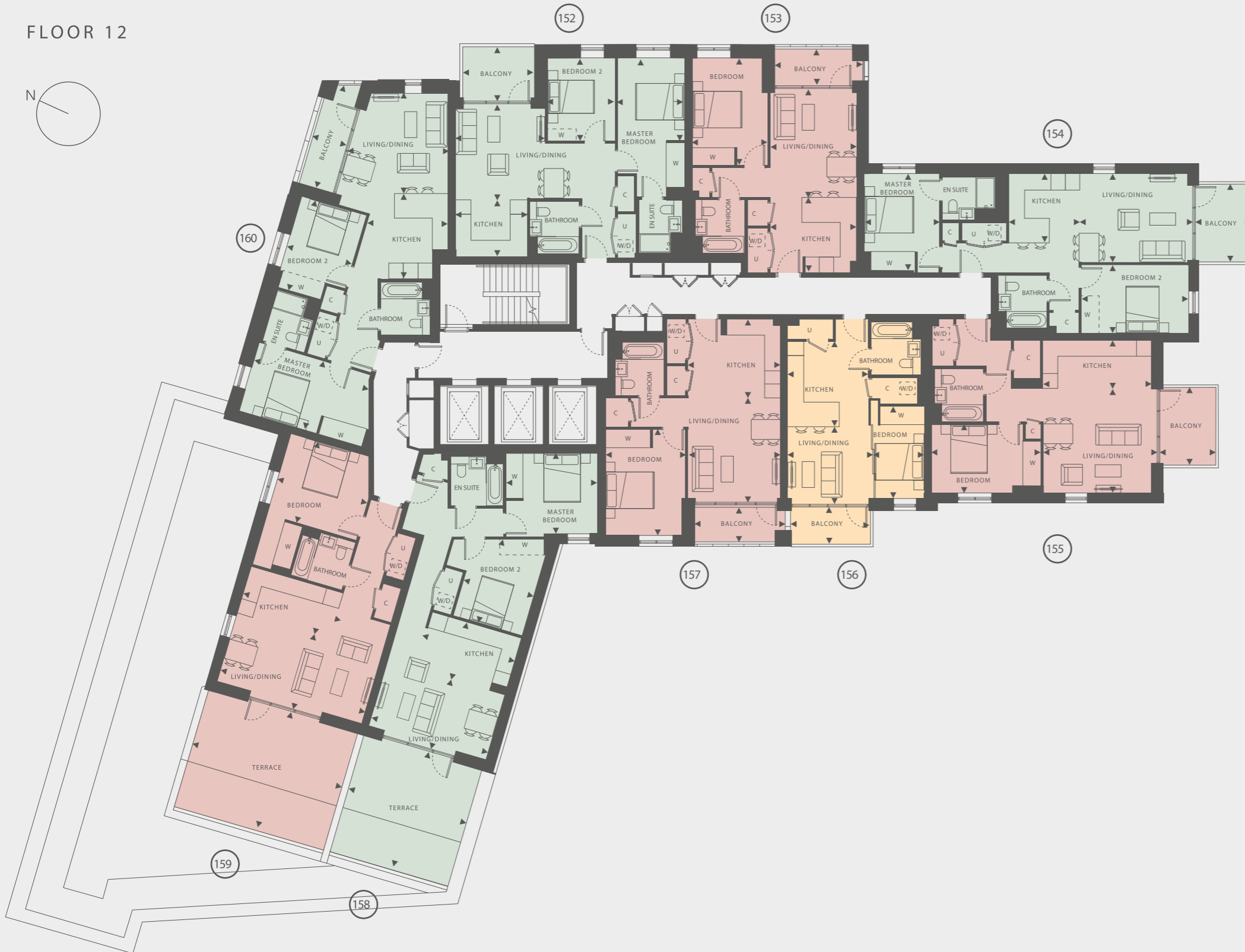
Living / Dining	4.35 x 3.54 m / 14'3" x 11'7"
Kitchen	3.15 x 3.54 m / 10'4" x 11'7"
Master Bedroom	4.38 x 3.06 m / 14'4" x 10'0"
<b>Total Internal Area</b>	<b>52.3 sq m / 563.3 sq ft</b>
Balcony	3.60 x 1.50 m / 11'10" x 4'11"
<b>Total Balcony Area</b>	<b>5.1 sq m / 54.8 sq ft</b>

**APARTMENT 143**  
TWO BEDROOM, TYPE 15

Living / Dining	4.60 x 3.61 m / 15'1" x 11'10"
Kitchen	2.92 x 2.83 m / 9'7" x 9'3"
Master Bedroom	3.07 x 3.93 m / 10'1" x 12'11"
Bedroom 2	4.33 x 2.77 m / 14'2" x 9'1"
<b>Total Internal Area</b>	<b>73.1 sq m / 786.4 sq ft</b>
Terrace	2.79 x 5.61 m / 9'1" x 18'4"
<b>Total Terrace Area</b>	<b>20.5 sq m / 220.6 sq ft</b>

**APARTMENT 144**  
ONE BEDROOM, TYPE 16

Living / Dining	4.64 x 4.28 m / 15'3" x 14'1"
Kitchen	4.38 x 1.95 m / 14'4" x 6'5"
Master Bedroom	4.46 x 2.80 m / 14'8" x 9'2"
<b>Total Internal Area</b>	<b>58.5 sq m / 629.6 sq ft</b>
Terrace	4.24 x 6.84 m / 13'11" x 22'5"
<b>Total Terrace Area</b>	<b>27.8 sq m / 299.2 sq ft</b>



- ◄► Measurement points
- W Fitted wardrobe
- [W] Optional wardrobe
- W/D Washer/dryer
- U Utility cupboard
- C Coat cupboard

- Suite apartment
- One bed apartment
- Two bed apartment

Floorplans are for approximate measurements only. Measurements may vary within a tolerance of 5%. The dimensions are not intended to be used for carpet sizes, appliance sizes or items of furniture. Furniture shown is not included.



**APARTMENT 152**  
TWO BEDROOM, TYPE 1A

Living / Dining	3.66 x 3.84 m / 12'0" x 12'7"
Kitchen	2.93 x 2.33 m / 9'7" x 7'8"
Master Bedroom	2.75 x 3.36 m / 9'0" x 11'0"
Bedroom 2	2.73 x 3.36 m / 8'11" x 11'0"
<b>Total Internal Area</b>	<b>68.8 sq m / 740.3 sq ft</b>
Balcony	2.94 x 2.19 m / 9'8" x 7'2"
<b>Total Balcony Area</b>	<b>6.5 sq m / 69.5 sq ft</b>

**APARTMENT 153**  
ONE BEDROOM, TYPE 2A

Living / Dining	3.54 x 4.35 m / 11'7" x 14'3"
Kitchen	3.54 x 3.15 m / 11'7" x 10'4"
Master Bedroom	2.83 x 4.38 m / 9'3" x 14'4"
<b>Total Internal Area</b>	<b>52.3 sq m / 563.3 sq ft</b>
Balcony	3.60 x 1.50 m / 11'10" x 4'11"
<b>Total Balcony Area</b>	<b>5.1 sq m / 54.8 sq ft</b>

**APARTMENT 154**  
TWO BEDROOM, TYPE 15A

Living / Dining	4.60 x 3.61 m / 15'1" x 11'10"
Kitchen	2.92 x 2.83 m / 9'7" x 9'3"
Master Bedroom	3.07 x 3.93 m / 10'1" x 12'11"
Bedroom 2	4.33 x 2.77 m / 14'2" x 9'1"
<b>Total Internal Area</b>	<b>73.1 sq m / 786.4 sq ft</b>
Balcony	2.33 x 3.19 m / 7'8" x 10'6"
<b>Total Balcony Area</b>	<b>7.3 sq m / 78.6 sq ft</b>

**APARTMENT 158**  
TWO BEDROOM, TYPE 17

Living / Dining	4.96 x 3.32 m / 16'3" x 10'11"
Kitchen	2.08 x 3.86 m / 6'10" x 12'8"
Master Bedroom	3.75 x 3.27 m / 12'4" x 10'9"
Bedroom 2	2.91 x 3.70 m / 9'7" x 12'2"
<b>Total Internal Area</b>	<b>69.6 sq m / 748.7 sq ft</b>
Terrace	5.12 x 4.94 m / 16'9" x 16'2"
<b>Total Terrace Area</b>	<b>25.0 sq m / 269.0 sq ft</b>

**APARTMENT 155**  
ONE BEDROOM, TYPE 16A

Living Room	4.64 x 4.26 m / 15'3" x 14'0"
Kitchen	4.38 x 1.96 m / 14'4" x 6'5"
Master Bedroom	4.46 x 2.80 m / 14'8" x 9'2"
<b>Total Internal Area</b>	<b>58.5 sq m / 629.5 sq ft</b>
Balcony	2.34 x 3.19 m / 7'8" x 10'6"
<b>Total Balcony Area</b>	<b>7.3 sq m / 78.6 sq ft</b>

**APARTMENT 156**  
SUITE, TYPE 8

Living / Dining	3.33 x 3.17 m / 10'11" x 10'5"
Kitchen	3.33 x 3.48 m / 10'11" x 11'5"
Bedroom	2.27 x 3.75 m / 7'5" x 12'4"
<b>Total Internal Area</b>	<b>41.6 sq m / 447.9 sq ft</b>
Balcony	3.21 x 1.52 m / 10'6" x 5'0"
<b>Total Balcony Area</b>	<b>5.0 sq m / 54.0 sq ft</b>

**APARTMENT 159**  
ONE BEDROOM, TYPE 18

Living / Dining	6.13 x 3.18 m / 20'1" x 10'5"
Kitchen	1.93 x 3.93 m / 6'4" x 12'11"
Master Bedroom	3.79 x 3.42 m / 12'5" x 11'3"
<b>Total Internal Area</b>	<b>59.9 sq m / 645.0 sq ft</b>
Terrace	5.12 x 6.17 m / 16'9" x 20'2"
<b>Total Terrace Area</b>	<b>31.1 sq m / 334.7 sq ft</b>

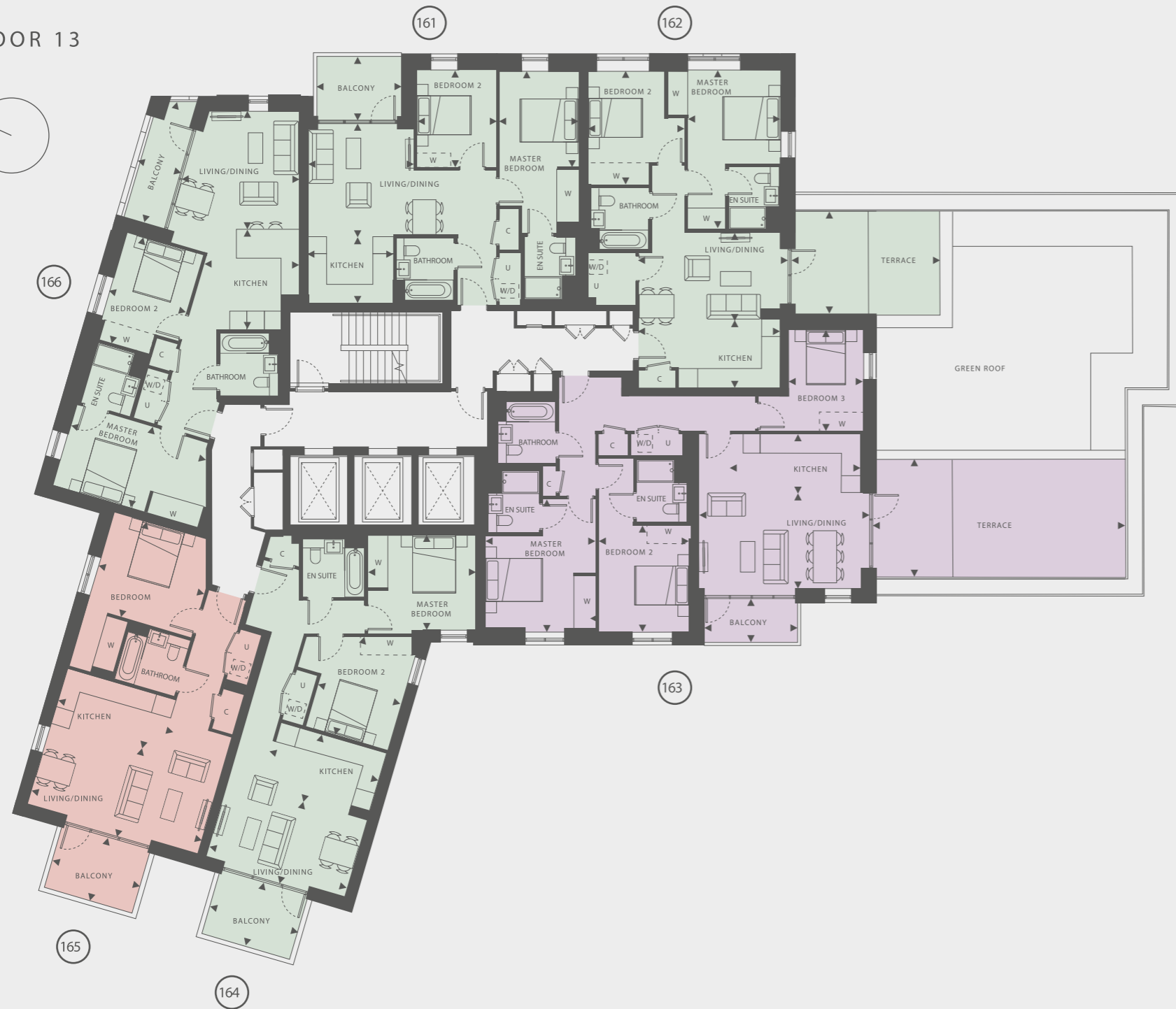
**APARTMENT 157**  
ONE BEDROOM, TYPE 9

Living / Dining	3.73 x 4.06 m / 12'3" x 13'4"
Kitchen	3.73 x 3.40 m / 12'3" x 11'2"
Master Bedroom	3.27 x 4.31 m / 10'9" x 14'2"
<b>Total Internal Area</b>	<b>54.7 sq m / 588.6 sq ft</b>
Balcony	3.71 x 1.50 m / 12'2" x 4'11"
<b>Total Balcony Area</b>	<b>5.3 sq m / 57.2 sq ft</b>

**APARTMENT 160**  
TWO BEDROOM, TYPE 14B

Living / Dining	3.91 x 4.05 m / 12'10" x 13'3"
Kitchen	3.66 x 3.18 m / 12'0" x 10'5"
Master Bedroom	2.90 x 4.71 m / 9'6" x 15'5"
Bedroom 2	3.81 x 2.76 m / 12'6" x 9'0"
<b>Total Internal Area</b>	<b>72.4 sq m / 779.5 sq ft</b>
Balcony	4.35 x 1.54 m / 14'4" x 5'1"
<b>Total Balcony Area</b>	<b>6.4 sq m / 68.4 sq ft</b>

FLOOR 13



- One bed apartment
- Two bed apartment
- Three bed apartment

- ◄► Measurement points
- W Fitted wardrobe
- [W] Optional wardrobe
- W/D Washer/dryer
- U Utility cupboard
- C Coat cupboard

Floorplans are for approximate measurements only. Measurements may vary within a tolerance of 5%. The dimensions are not intended to be used for carpet sizes, appliance sizes or items of furniture. Furniture shown is not included.



**APARTMENT 163**  
THREE BEDROOM, TYPE 19

Living / Dining  
5.87 x 3.55 m / 19'3" x 11'8"

Kitchen  
4.21 x 2.03 m / 13'10" x 6'8"

Master Bedroom  
3.82 x 3.19 m / 12'6" x 10'6"

Bedroom 2  
3.19 x 3.70 m / 10'5" x 12'2"

Bedroom 3  
2.57 x 3.51 m / 8'5" x 11'6"

**Total Internal Area**  
**104.4 sq m / 1124.7 sq ft**

Balcony  
3.23 x 1.52 m / 10'7" x 5'0"

**Total Balcony Area**  
**5.00 sq m / 53.99 sq ft**

Terrace  
8.77 x 4.03 m / 28'9" x 13'2"

**Total Terrace Area**  
**35.2 sq m / 378.8 sq ft**

Balcony  
2.33 x 3.19 m / 7'8" x 10'6"

**Total Balcony Area**  
**7.3 sq m / 78.6 sq ft**

**APARTMENT 165**  
ONE BEDROOM, TYPE 18A

Living / Dining  
6.13 x 3.18 m / 20'1" x 10'5"

Kitchen  
1.93 x 3.93 m / 6'4" x 12'11"

Master Bedroom  
3.78 x 3.42 m / 12'5" x 11'3"

**Total Internal Area**  
**59.9 sq m / 644.3 sq ft**

Balcony  
2.33 x 3.19 m / 7'8" x 10'6"

**Total Balcony Area**  
**7.3 sq m / 78.6 sq ft**

**APARTMENT 161**  
TWO BEDROOM, TYPE 1B

Living / Dining  
3.66 x 3.84 m / 12'0" x 12'7"

Kitchen  
2.93 x 2.33 m / 9'7" x 7'8"

Master Bedroom  
2.75 x 3.36 m / 9'0" x 11'0"

Bedroom 2  
2.75 x 3.36 m / 9'0" x 11'0"

**Total Internal Area**  
**68.8 sq m / 740.3 sq ft**

Balcony  
2.94 x 2.19 m / 9'8" x 7'2"

**Total Balcony Area**  
**6.5 sq m / 69.5 sq ft**

**APARTMENT 162**  
TWO BEDROOM, TYPE 25

Living / Dining  
5.15 x 3.04 m / 16'11" x 10'0"

Kitchen  
2.33 x 4.89 m / 7'8" x 16'0"

Master Bedroom  
3.21 x 5.52 m / 10'6" x 18'1"

Bedroom 2  
3.37 x 3.14 m / 11'1" x 10'4"

**Total Internal Area**  
**68.8 sq m / 740.0 sq ft**

Terrace  
5.19 x 3.53 m / 17'0" x 11'6"

**Total Terrace Area**  
**18.1 sq m / 194.8 sq ft**

**APARTMENT 164**  
TWO BEDROOM, TYPE 17A

Living / Dining  
4.98 x 3.32 m / 16'4" x 10'11"

Kitchen  
2.08 x 3.86 m / 6'10" x 12'8"

Master Bedroom  
3.74 x 3.24 m / 12'3" x 10'8"

Bedroom 2  
2.93 x 3.44 m / 9'7" x 11'3"

**Total Internal Area**  
**69.5 sq m / 747.8 sq ft**

Balcony  
3.19 x 2.34 m / 10'6" x 7'8"

**Total Balcony Area**  
**7.3 sq m / 78.6 sq ft**

**APARTMENT 166**  
TWO BEDROOM, TYPE 14B

Living / Dining  
3.91 x 4.05 m / 12'10" x 13'3"

Kitchen  
3.66 x 3.18 m / 12'0" x 10'5"

Master Bedroom  
2.90 x 4.71 m / 9'6" x 15'5"

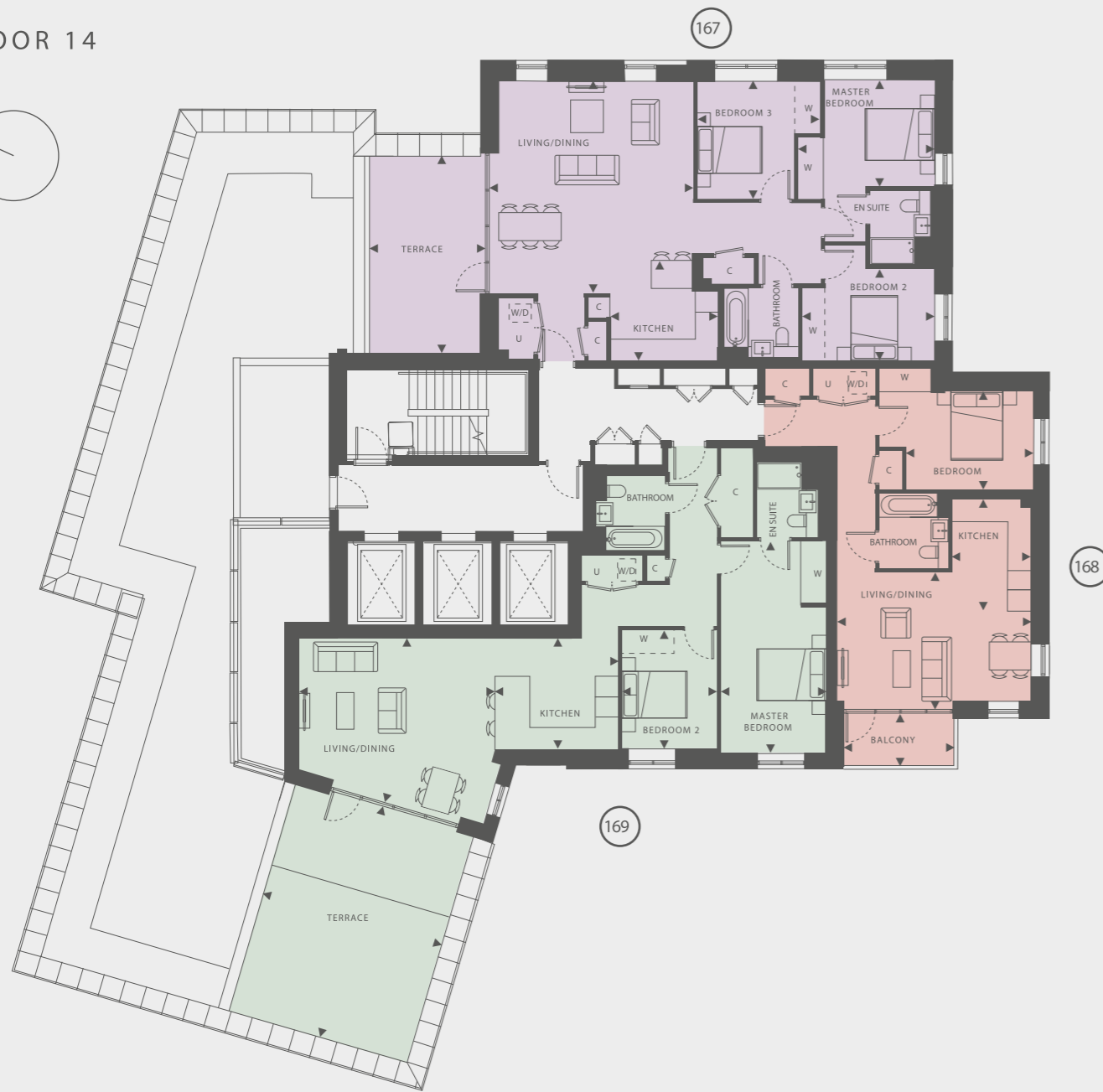
Bedroom 2  
3.81 x 2.76 m / 12'6" x 9'0"

**Total Internal Area**  
**72.4 sq m / 779.5 sq ft**

Balcony  
4.35 x 1.54 m / 14'4" x 5'1"

**Total Balcony Area**  
**6.4 sq m / 68.4 sq ft**

FLOOR 14



- One bed apartment
- Two bed apartment
- Three bed apartment

- ◄► Measurement points
- W Fitted wardrobe
- [W] Optional wardrobe
- W/D Washer/dryer
- U Utility cupboard
- C Coat cupboard

Floorplans are for approximate measurements only. Measurements may vary within a tolerance of 5%. The dimensions are not intended to be used for carpet sizes, appliance sizes or items of furniture. Furniture shown is not included.



**APARTMENT 167**  
THREE BEDROOM, TYPE 20

Living / Dining	5.90 x 5.94 m / 19'4" x 19'6"
Kitchen	3.16 x 3.10 m / 10'4" x 10'2"
Master Bedroom	3.96 x 3.09 m / 13'0" x 10'1"
Bedroom 2	3.82 x 2.68 m / 12'6" x 8'9"
Bedroom 3	3.57 x 3.40 m / 11'8" x 11'2"
<b>Total Internal Area</b>	<b>102.8 sq m / 1106.5 sq ft</b>
Terrace	3.30 x 5.84 m / 10'9" x 19'1"
<b>Total Terrace Area</b>	<b>19.0 sq m / 204.5 sq ft</b>

**APARTMENT 168**  
ONE BEDROOM, TYPE 21

Living / Dining	5.59 x 3.97 m / 18'4" x 13'0"
Kitchen	3.32 x 2.26 m / 10'11" x 7'5"
Master Bedroom	3.67 x 2.85 m / 12'0" x 9'4"
<b>Total Internal Area</b>	<b>57.5 sq m / 619.0 sq ft</b>
Balcony	3.23 x 1.52 m / 10'7" x 5'0"
<b>Total Balcony Area</b>	<b>5.0 sq m / 54.0 sq ft</b>

**APARTMENT 169**  
TWO BEDROOM, TYPE 22

Living / Dining	5.68 x 4.86 m / 18'7" x 15'11"
Kitchen	3.55 x 3.24 m / 11'8" x 10'8"
Master Bedroom	3.00 x 6.11 m / 9'10" x 20'1"
Bedroom 2	2.75 x 3.42 m / 9'0" x 11'3"
<b>Total Internal Area</b>	<b>94.4 sq m / 1015.6 sq ft</b>
Terrace	6.91 x 5.37 m / 22'8" x 17'7"
<b>Total Terrace Area</b>	<b>36.9 sq m / 397.1 sq ft</b>



FIRST LIFE,  
THEN SPACES,  
THEN BUILDINGS.



# ST WILLIAM- LANDSCAPES FOR LIVING

**St William is a joint venture between the Berkeley Group and National Grid. Our vision is to develop sites that have been closed to the public for decades and reconnect them to the community.**

We want the places built by St William to be renowned for the quality of their landscape and the open space. The term 'landscape' comes from two words meaning 'to shape a place where people belong'.

That idea inspires our approach.

The space between buildings is where you create a community and somewhere that is sociable, sustainable and safe. We believe beautiful landscaped open spaces give room to breathe, and sit in harmony with our vision for the carefully considered architecture and thoughtfully designed interiors throughout our developments. To pioneer a landscape led approach to urban developments is hugely important to us. We truly believe these spaces between the buildings are as important as the buildings themselves, where one's well-being within that space can be emphasised through positive design. Backed by the strength and expertise of National Grid and the Berkeley Group, St William will regenerate sites at the heart of communities across London and the South of England, creating homes for people to enjoy.

- 01 Kidbrooke Village, Berkeley Homes
- 02 Roehampton House, St James
- 03 Woodberry Down, Berkeley Homes