



ROYAL ARSENAL RIVERSIDE

ROYAL BOROUGH OF GREENWICH, LONDON

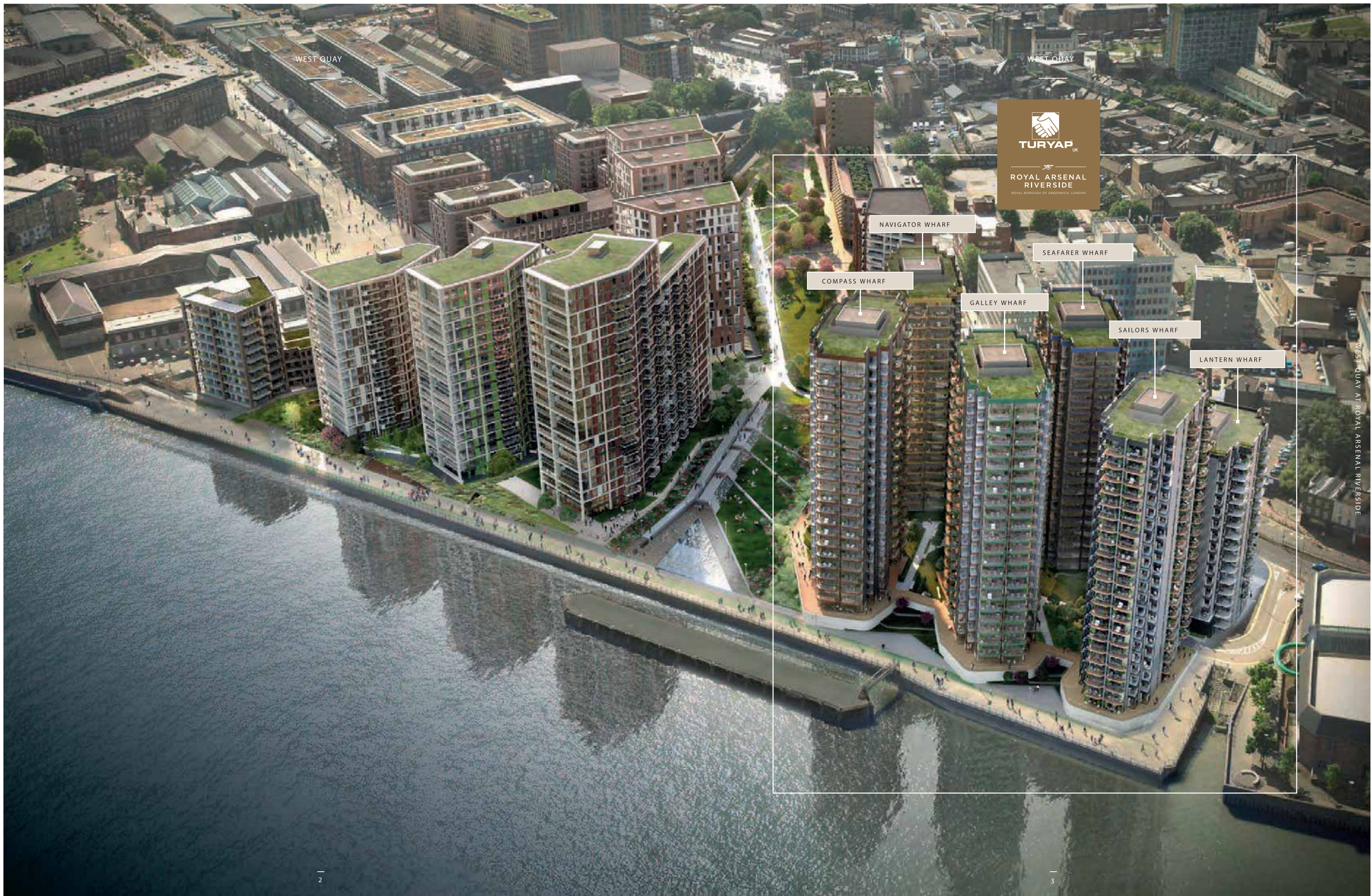


TURYAP[®]
UK



TURYAP[®]
UK





WEST QUAY

WEST QUAY



TURYP
UK

ROYAL ARSENAL
RIVERSIDE
ROYAL BOROUGH OF GREENWICH, LONDON

NAVIGATOR WHARF

SEAFARER WHARF

COMPASS WHARF

GALLEY WHARF

SAILORS WHARF

LANTERN WHARF

WEST QUAY AT ROYAL ARSENAL RIVERSIDE

WEST QUAY

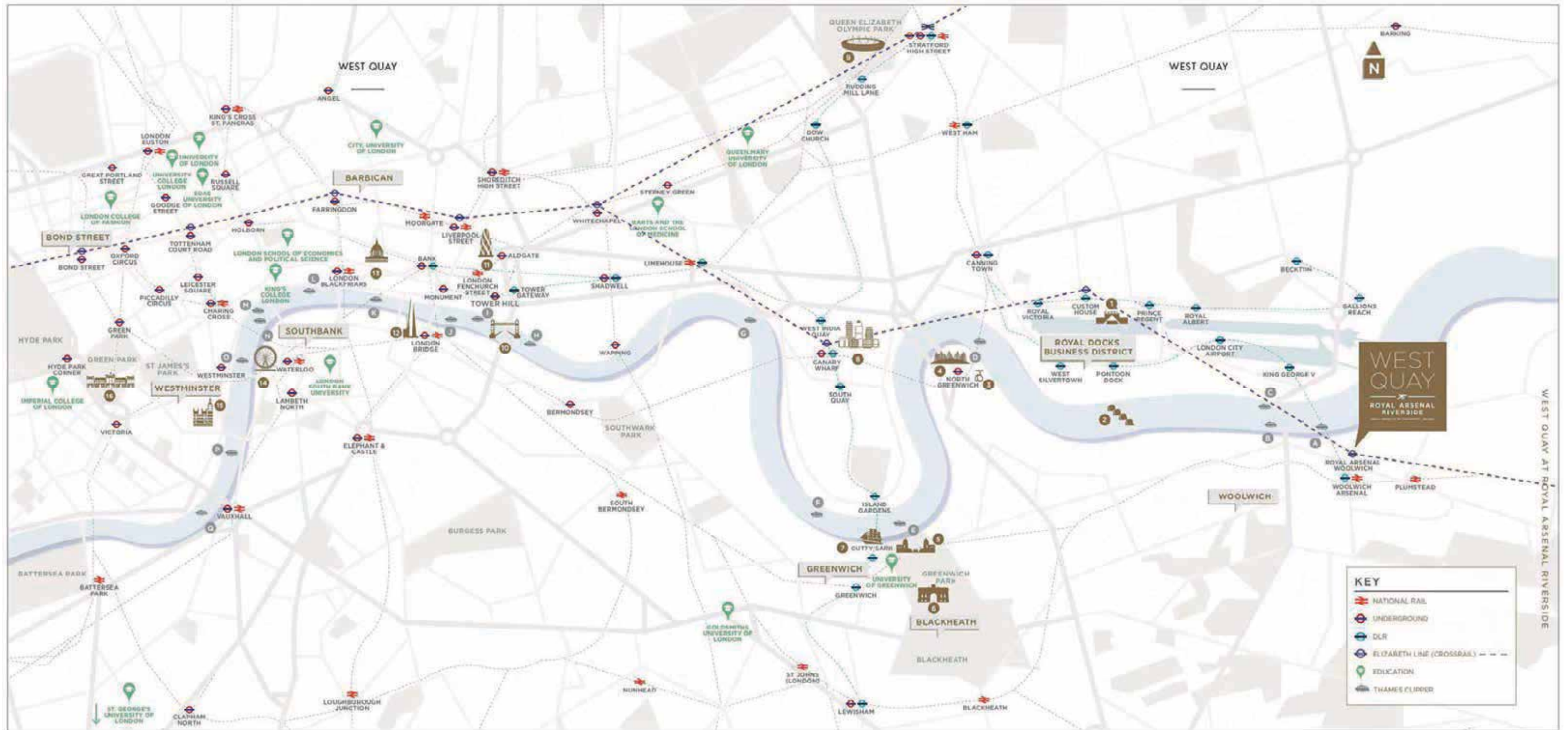
MINUTES FROM CANARY WHARF

WEST QUAY AT ROYAL ARSENAL RIVERSIDE

With balconies or terraces for every apartment, the architectural features of each building make the most of this spectacular waterfront location.

PERFECTLY PLACED ON THE RIVER

Set beside one of the world's most iconic waterways, West Quay takes full advantage of its prominent position on the River Thames.



REMARKABLY WELL CONNECTED

West Quay at Royal Arsenal Riverside is a starting point for exploring London – close to local landmarks and easy to discover everything the Capital has to offer.

LANDMARKS

- | | |
|----------------------------|------------------------|
| 1 EXCEL CENTRE | 9 OLYMPIC STADIUM |
| 2 THE THAMES BARRIER | 10 TOWER BRIDGE |
| 3 EMIRATES AIRLINE | 11 30 ST MARY AXE |
| 4 THE O2 | 12 THE SHARD |
| 5 THE ROYAL NAVAL COLLEGE | 13 ST PAUL'S CATHEDRAL |
| 6 NATIONAL MARITIME MUSEUM | 14 THE LONDON EYE |
| 7 CUTTY SARK | 15 WESTMINSTER |
| 8 CANARY WHARF | 16 BUCKINGHAM PALACE |

THAMES CLIPPER

- | | |
|--------------------------|---------------------------|
| A WOOLWICH ARSENAL PIER | J LONDON BRIDGE CITY PIER |
| B WOOLWICH SOUTH PIER | K BANKSIDE PIER |
| C WOOLWICH NORTH PIER | L BLACKFRIARS PIER |
| D NORTH GREENWICH PIER | M EMBANKMENT PIER |
| E GREENWICH PIER | N FESTIVAL PIER |
| F MASTHOUSE TERRACE PIER | O WESTMINSTER PIER |
| G CANARY WHARF PIER | P MILLBANK PIER |
| H ST KATHARINE'S PIER | Q ST GEORGE WHARF PIER |
| I TOWER HILL PIER | |

Forthcoming on-site Crossrail station at Royal Arsenal Riverside. Source: www.crossrail.co.uk
Map is not to scale and is indicative only

ONE OF THE BEST CONNECTED DEVELOPMENTS IN LONDON

Whether the destination is across town or beyond, West Quay offers a number of simple ways to travel.

ELIZABETH LINE*

- CANARY WHARF 08 mins
- LIVERPOOL STREET 14 mins
- FARRINGDON 17 mins
- BOND STREET 21 mins
- PADDINGTON 25 mins
- HEATHROW 50 mins

FROM WOOLWICH (ON-SITE) *FORMERLY CROSSRAIL



- QE2 PIER THE O 06 mins
- GREENWICH 15-20 mins
- CANARY WHARF 20-30 mins
- LONDON BRIDGE 30-40 mins
- EMBANKMENT 45 mins
- BLACKFRIARS 49 mins

FROM WOOLWICH ARSENAL PIER (ON-SITE)



- BLACKHEATH 14 mins
- GREENWICH 14 mins
- LONDON BRIDGE 23 mins
- WATERLOO EAST 29 mins
- CANNON STREET 29 mins
- CHARING CROSS 35 mins

FROM WOOLWICH ARSENAL STATION

DLR

- LONDON CITY AIRPORT 07 mins
- CANNING TOWN 12 mins
- CANARY WHARF 20 mins
- STRATFORD 22 mins
- BANK 27 mins
- TOWER GATEWAY 29 mins

FROM WOOLWICH ARSENAL



- AMSTERDAM 1 hr
- PARIS ORLY 1 hr 15 mins
- FRANKFURT 1 hr 30 mins
- ZURICH 1 hr 35 mins
- GENEVA 1 hr 40 mins
- MILAN LINATE 2 hrs
- VENICE 2 hrs
- NEW YORK 7 hrs 30 mins

FROM LONDON CITY AIRPORT



- M25 24 mins
- LONDON CITY AIRPORT 32 mins
- EBBSFLEET INTERNATIONAL 35 mins
- BOND STREET 36 mins
- GATWICK AIRPORT 1hr 4 mins
- EUROTUNNEL 1hr 20 mins

FROM ROYAL ARSENAL RIVERSIDE

WEST QUAY AT ROYAL ARSENAL RIVERSIDE

Timings are approximate, correct at time of print and do not include walking/transfer times. Sources: www.crossrail.co.uk www.tfl.gov.uk www.thamesclippers.com www.londoncityairport.com and www.google.co.uk/maps *Forthcoming on-site Crossrail station at Royal Arsenal Riverside.



LIFE AT WEST QUAY

Leading onto the riverside walk and a new landscaped park via its own private communal gardens, West Quay combines easy transport connections with an idyllic setting – the ideal combination for urban living.



|| THE BUILDINGS ARE CONFIGURED TO OPTIMISE
THEIR RELATIONSHIPS TO BOTH ONE ANOTHER AND
TO MAXIMISE VIEWS OUTWARDS TO THE RIVER. ||

Simon Bowden
Founder and Director of Simon Bowden Architecture

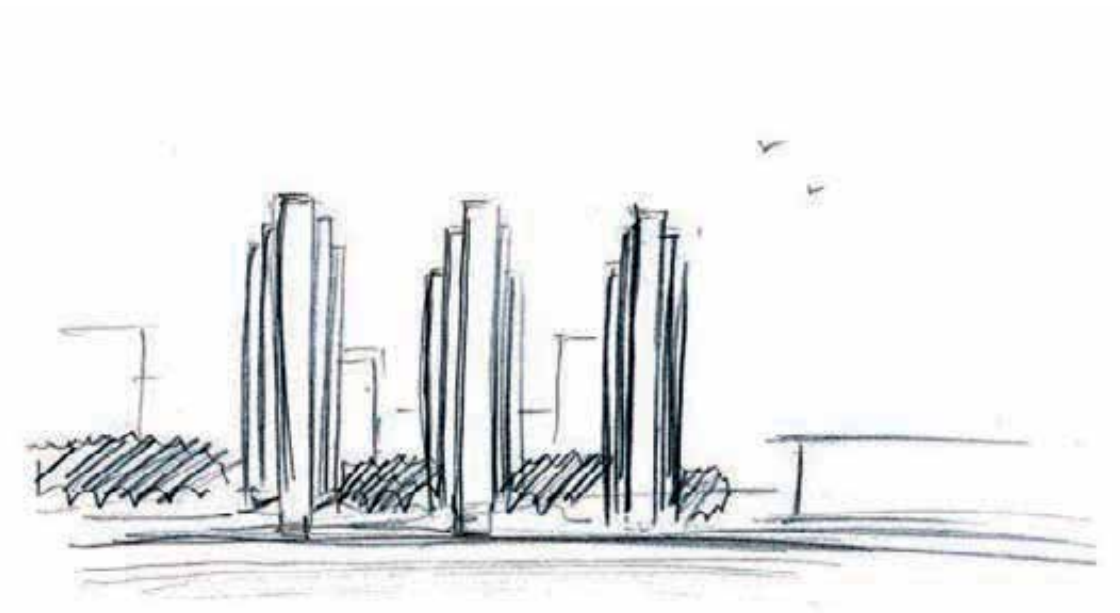


AN ARCHITECT'S VISION

Renowned architect, Simon Bowden,
has beautifully designed each building.

His portfolio includes the Modular Theatre in Hong Kong and the Blue Opal Theatre in Sydney and his artistic flair is evident in the colours and features that define both the façades and the interiors.

The sense of space is unlike anywhere else, with no more than eight homes on every floor. Wide hallways lead to most apartments, while all offer private balconies or terraces. Inside, generous open plan living areas and dual aspect rooms are filled with natural light.



Concept sketch, indicative only



|| DESIGNED IN HARMONY WITH THE WATERFRONT, THE REFINED SILVER, GOLD AND BRONZE COLOUR PALETTE ENHANCES THE DISTINCTIVE BUILDING FORMS AND ADDS VARIETY AND RICHNESS TO WEST QUAY. ||

Simon Bowden
Founder and Director of Simon Bowden Architecture

RESIDENTS' GARDENS

A dedicated play area creates a safe environment for children.



Ornamental and biodiverse planting offers a characterful space for residents.

SURROUNDED BY BEAUTIFUL GARDENS

Residents of West Quay enjoy exclusive access to private communal gardens filled with mature trees, colourful flowers and manicured lawns.

The landscapes have created a space that can be appreciated all year round by residents young and old. In these private communal gardens the attention to seasonal and sensory planting creates a splendid space in which to spend time outdoors yet close to home. Here, residents can relax in peaceful surroundings exclusively for those living at West Quay.

Children will enjoy the specially designed play area. While adults will appreciate the peace of the private courtyard, including warm timber seats for time in the sun. The wide variety of native trees, grasses and shrubs planted throughout the gardens provide food and habitat for a range of wildlife – all carefully tended by the Royal Arsenal Riverside estate team.

CLOSER TO NATURE

Private communal gardens of mature trees, colourful flowers and manicured lawns are exclusively for residents of West Quay.

STYLISH INTERIORS

With lighter colour palettes, textured timber finishing and bright surfaces, interiors at West Quay are designed to fill every apartment with natural light.

Living spaces feature floor-to-ceiling windows and doors that slide open onto a balcony or terrace to encourage a sense of indoor/outdoor living. The view from each apartment is just as easy to enjoy from inside the apartment, with luxurious, light-filled rooms that are made for relaxing.

Combining clean lines, subtle tones and hand-selected fittings, the Berkeley interior design team has elevated these spaces from the functional to the simply beautiful. In every room, they have added design flourishes that indulge the senses – from the bronze mirrored splashback in the kitchen to the polished marble effect tiles in the bathroom.



|| INSPIRED BY THE HORIZON AND THE RIVER, WE WANTED TO BRING THE OUTDOORS INSIDE AND CREATE SPACES THAT WOULD JUST TAKE YOUR BREATH AWAY. ||

Maria Matiopoulou
Berkeley Interior Design Manager



ATTENTION TO EVERY DETAIL

Created to meet the demands of modern living, apartments feature fully-fitted kitchens that stand up to the rigours of daily life. Individually designed layouts, composite quartz worktops and warm timber flooring showcase the variety, texture and sense of space. With state-of-the-art appliances, everything a contemporary home needs is right at hand.

BREATHTAKING VIEWS



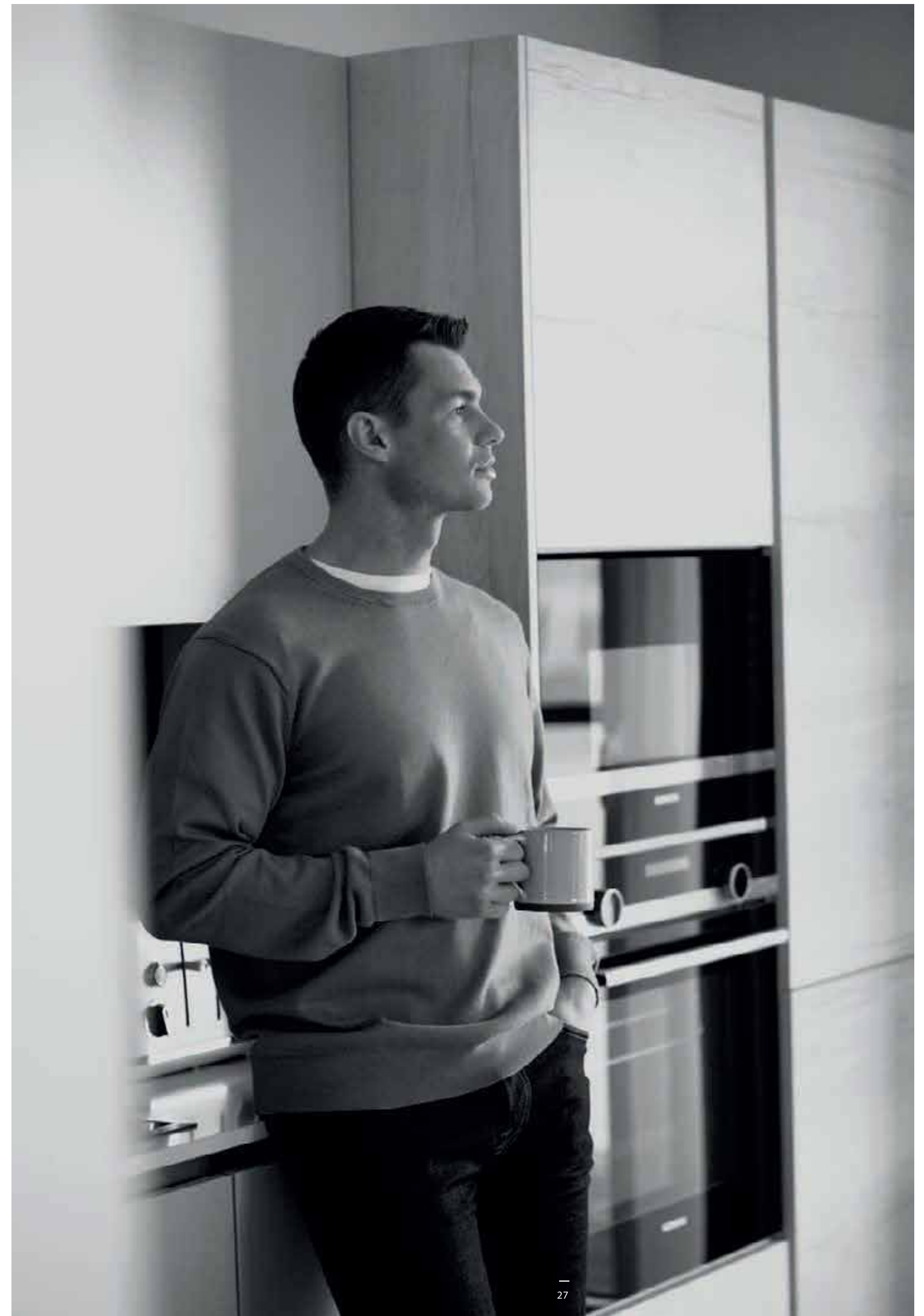
Photography of view from Royal Arsenal Riverside is indicative only

In all directions, the views from West Quay are breathtaking, with the buildings designed to make the most of the panorama that stretches across the river or the new four acre Maribor Park.

Every apartment benefits from its own generous lantern balcony or terrace – making West Quay the perfect spot for summer evenings.



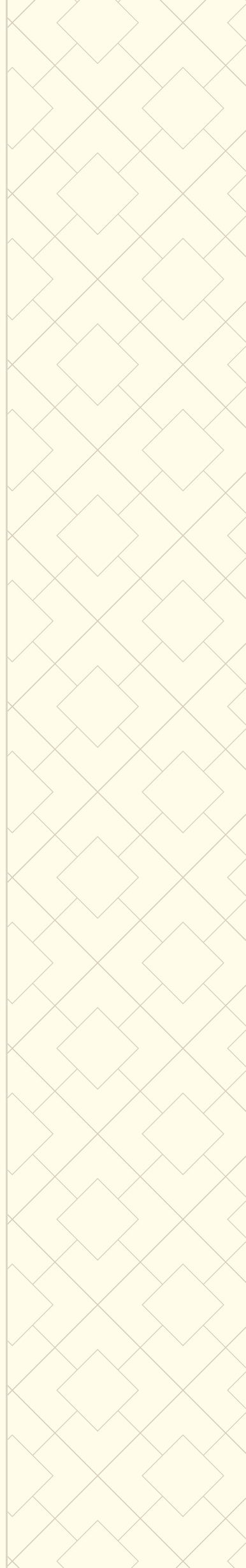
Photography of West Quay Showhome at Royal Arsenal Riverside, indicative only

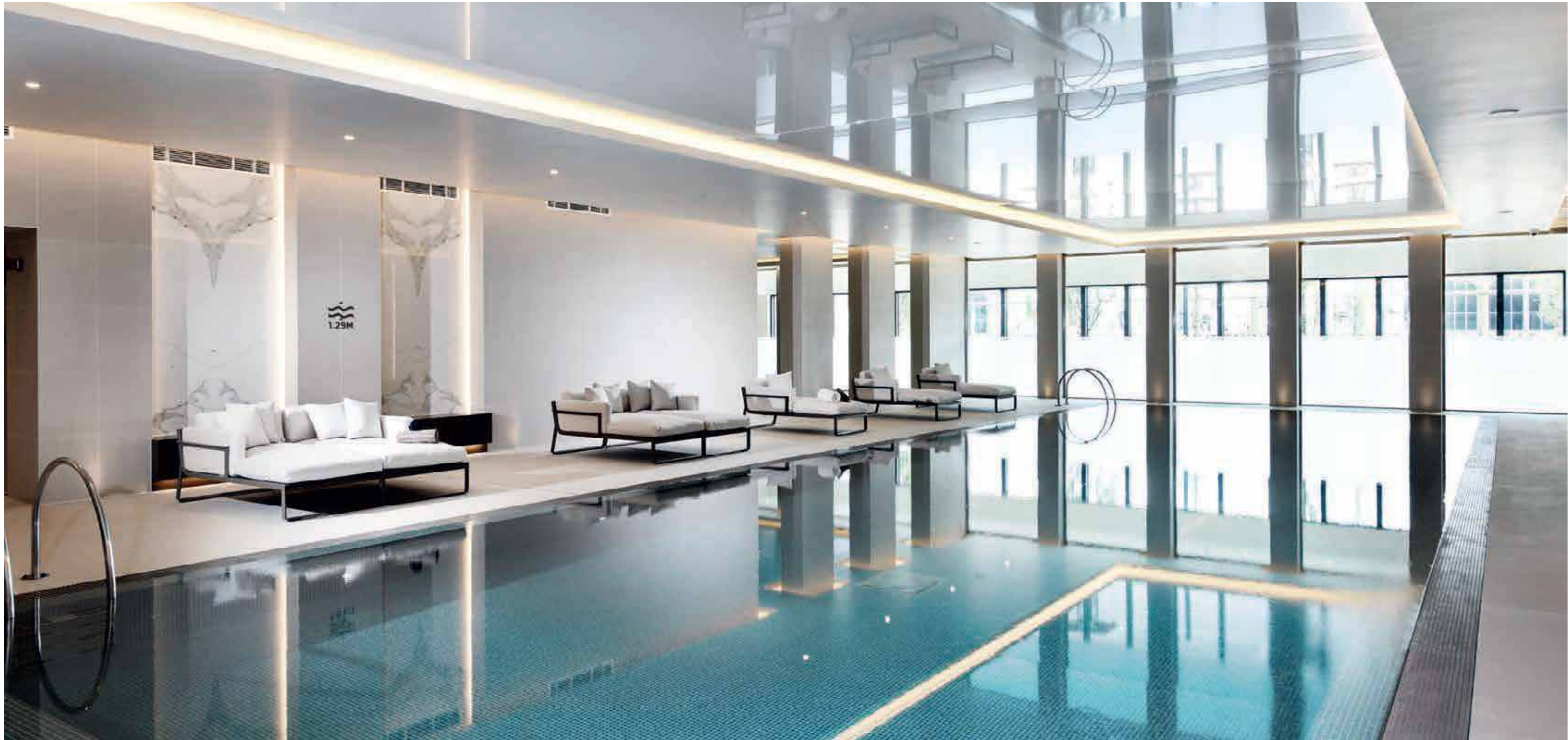




THE WATERSIDE CLUB

West Quay residents enjoy exclusive membership of *The Waterside Club* – the on-site health and wellbeing centre right at the heart of Royal Arsenal Riverside.

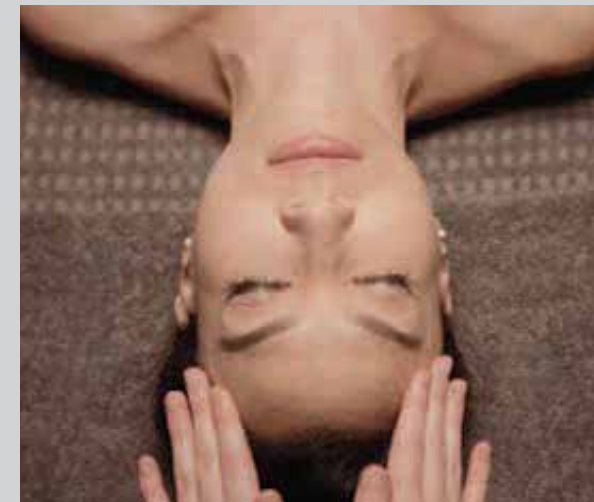
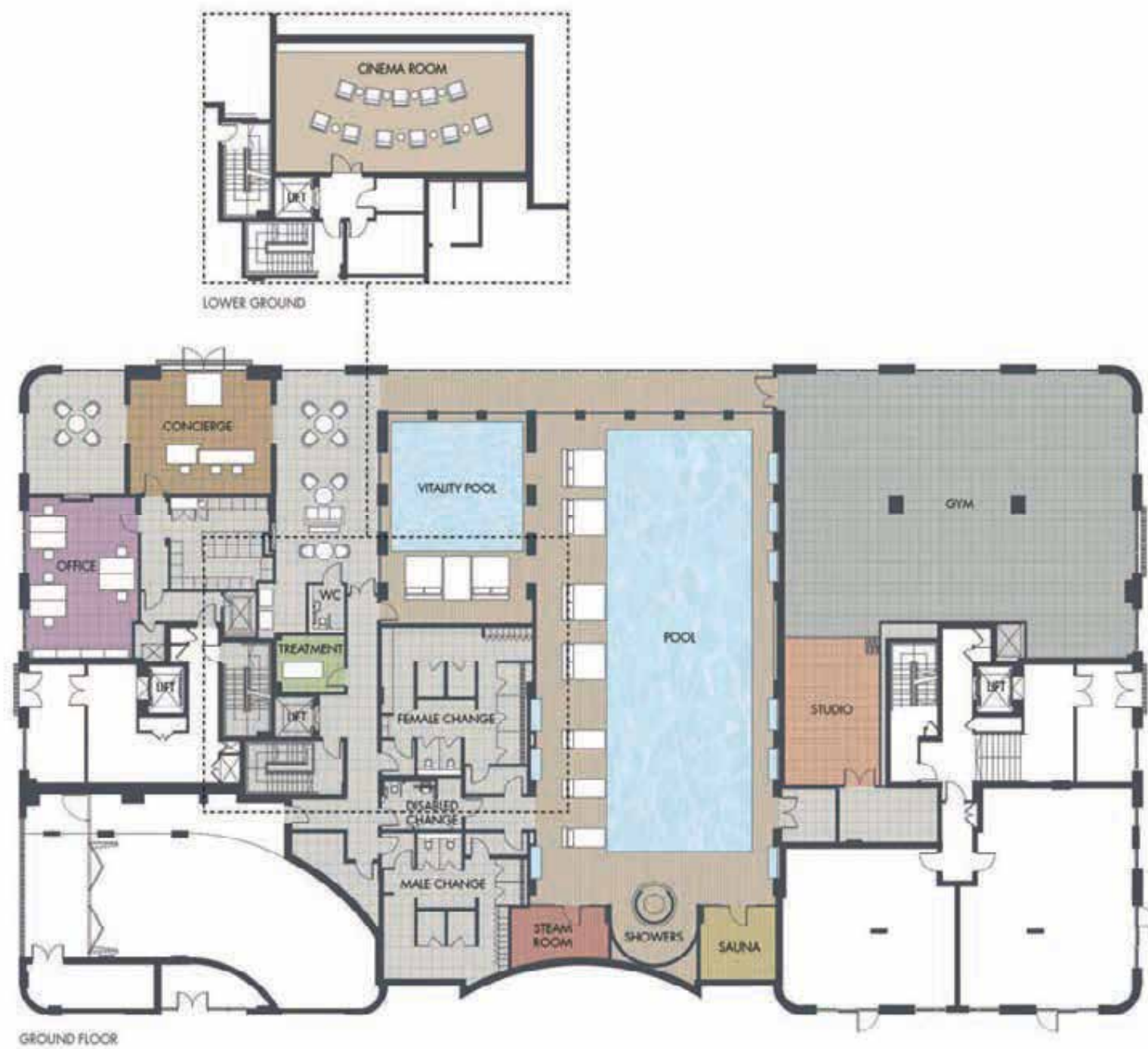




A LUXURIOUS 20-METRE POOL

OUTSTANDING RESIDENTS' FACILITIES

The Waterside Club includes exclusive use of the five-star facilities such as the 20-metre swimming pool, sauna and steam room as well as the fitness suite and treatment room.



20-METRE PRIVATE POOL · SPA POOL, SAUNA & STEAM ROOM
 STATE-OF-THE-ART GYM · POOLSIDE LOUNGERS
 TREATMENT ROOM · PRIVATE RESIDENTS' CINEMA
 CONCIERGE · RESIDENTS' LOUNGE & RECEPTION AREA



MARIBOR PARK

The vision for the new four acre Maribor Park was to seamlessly connect the river, the residences and the landscape with the area's heritage.





REFLECTING A RIVER'S JOURNEY

Award-winning landscape designers, Gillespies, drew inspiration from the sense of connectivity to create an elegant central park full of tranquil spaces.

West Quay is adjacent to the beautiful Maribor Park that has been carefully cultivated to embrace the many aspects of the English countryside.

This grand open green space leads through Royal Arsenal Riverside to the river beside West Quay. Residents and visitors alike can share the space and enjoy more time among nature.

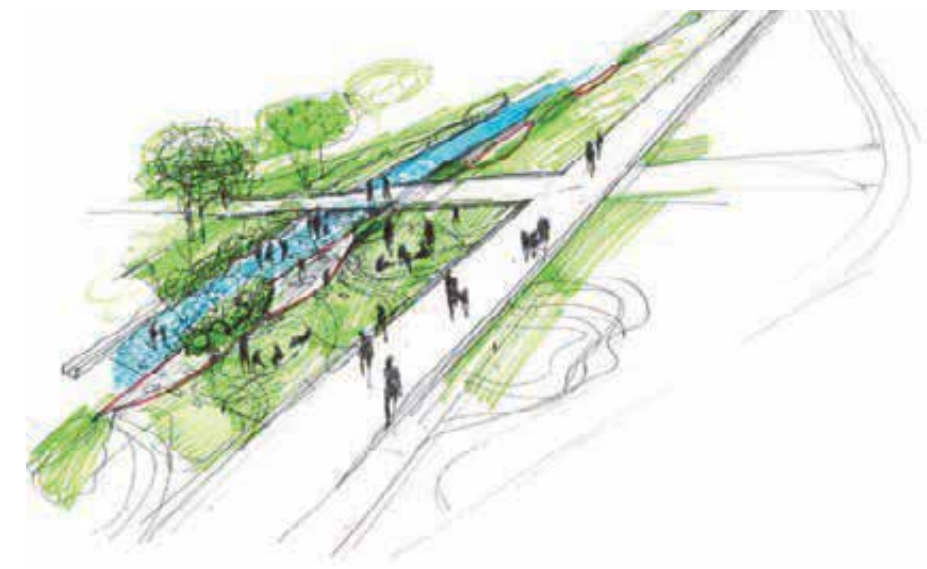


Illustration of Maribor Park, indicative only

|| THE PARK GATHERS TOGETHER A SERIES OF STRANDS THAT MEET AND MOVE TOWARDS THE WATER'S EDGE. CASCADING WATER PASSES THROUGH THE HEART OF THE PARK, WITH ITS RICH AND DIVERSE PLANTING, ACHIEVING A VARIETY OF SPACES FOR INFORMAL PLAY, TO ENGAGE WITH THE WATER OR SIMPLY TO ENJOY THE JOURNEY DOWN TO THE RIVER. ||

Steve Wardell
Managing Partner Gillespies



Lifestyle images are indicative only

A PEACEFUL PLACE FOR ALL

From sensory planting to waterways and parkland the size of 13 Olympic swimming pools, Maribor Park invites everyone to embrace the great outdoors.



OPENING OUT ONTO
1 KM OF RIVERSIDE WALK

Maribor Park extends the length of Royal Arsenal Riverside towards the kilometre-long promenade right beside West Quay.

As Maribor Park sweeps down towards the water, it meets the river walk that is part of a rejuvenated Thames Path.

From here cyclists, walkers and runners can head west towards the city centre or follow the trail further east past the widest point in the river.



A TRULY UNIQUE SETTING



ROYAL ARSENAL RIVERSIDE

Life at West Quay puts the delights of Royal Arsenal Riverside at your disposal. Discover new and historical buildings transformed into a mix of eateries, coffee shops and everything required for a convenient lifestyle.



INSPIRED BY HISTORY

The origins of the Royal Arsenal can be traced back to the creation of Woolwich Dockyard, established by Henry VIII in 1512 to build warships to protect the nation.

The Royal Arsenal's military history centres on its strategic position on the River Thames. This site at Woolwich was conveniently placed to equip navy vessels with cannon and artillery – examples of which are celebrated at the Tall Ships Festival at Royal Arsenal Riverside.

Originally it was the site of an Iron Age fort and Roman barracks. However, the first recorded building in the Arsenal dates back to the mid-16th century. From that point on, it became famous as a centre for weapons manufacturing and research.



A DISTINGUISHED HISTORY

By 1696, the Royal Laboratory was established here for the making of 'fireworks' and then gunpowder, shots and shells. The east and west pavilions of what was known as Laboratory Square have survived. Today, the original architecture informs the character of Royal Arsenal Riverside, where such iconic buildings have been restored and brought back to life for everyone to enjoy.



ALWAYS SOMETHING GOING ON

Royal Arsenal Riverside Explore (RARE) is a new retail, leisure and cultural hub for this thriving area of London.

Residents have access to coffee shops and places for dinner, groceries, a pharmacy, doctors' surgery, nursery, gym and 24-hour Concierge on-site.

With dedicated venues for the arts as well as spaces for community activities and classes, this is where the wider community comes together.



@RARE_EXPLORE



www.rare.london

RARE



YEAR ROUND EVENTS

Royal Arsenal Riverside plays host to over 60 events each year. At the Tall Ships Festival, people enjoyed fairground rides, performances and re-enactments that stretch from Dial Arch Square and down No.1 Street towards the river. There is a monthly farmers' market as well as seasonal events like the Christmas Fête or the summer party, with rides, street food and live entertainment.



R | A | R | E

SO MUCH MORE TO COME

The forthcoming Creative District will complement the growing number of creative businesses that are already based here.

Set to rival South Bank, the 16,500m² Creative District will soon provide space for a 450-seat theatre and a base for internationally acclaimed theatre companies.

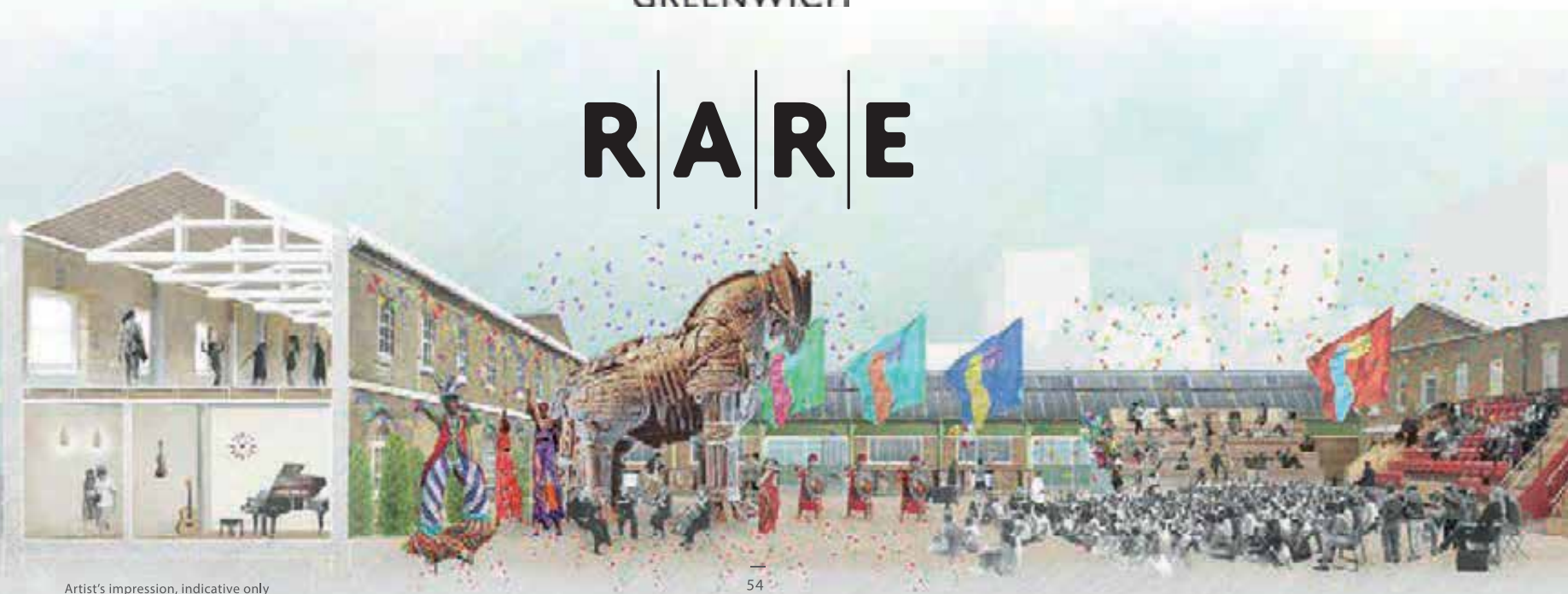
The performance courtyard will have outdoor seating for up to 600 and there will be 10 rehearsal studios.

The Chineke! Orchestra and the hugely popular immersive theatre group, Punchdrunk, are part of the Creative District alongside Woolwich-based Protein Dance.

Meanwhile, the annual Woolwich Contemporary Print Fair will continue its residence in the new gallery space in the former carriage factory.



R | A | R | E



Artist's impression, indicative only



Image indicative only



Woolwich Contemporary Print Fair



Image indicative only



Image indicative only



CONVENIENCE AND CHOICE

Life at West Quay places all the essential amenities of Royal Arsenal Riverside close to home.

For days and evenings spent locally there is a wide variety of facilities. The state-of-the-art gym, nursery, doctors' surgery and Barclays Bank are all just around the corner.

There is also a number of pubs, bars and restaurants as well as a choice of supermarkets, including Tesco, Sainsbury's Local and M&S Food Hall.







LONDON CALLING

From lazy days by the river, time in the gym or working at home, West Quay is the ideal setting. Yet with convenient links to central London, the delights of this world-class city are never far away.



ALL WITHIN EASY REACH

London life is rich and diverse, with many of the best known destinations rivalled by local hidden gems.

The neighbourhoods surrounding West Quay offer so much to see and do – from the glorious open spaces of Greenwich and the historic back streets of Blackheath to the cultural events of Woolwich.

Central London is within easy reach too, providing some of the world's best shopping and entertainment via Covent Garden, Bond Street and on to Chelsea.





WEST QUAY AT ROYAL ARSENAL RIVERSIDE

NEW PLACES TO EXPLORE

A short distance from West Quay, the Royal Borough of Greenwich is a favourite for locals and visitors alike. Greenwich Village is awash with history and its cafés, bars and eateries are the ideal spots to spend time close to home socialising and relaxing with friends or family.

WOOLWICH

Woolwich is a colourful and creative area that will surprise and delight in equal measure.

The district surrounding West Quay is an up-and-coming London hotspot, Woolwich is making its mark as a vibrant and thriving destination. From local favourites close to Woolwich Arsenal station to Con Gusto Restaurant at Royal Arsenal Riverside, this is an area noted for its culinary taste.

Residents of West Quay will also enjoy the many cultural and community events that take place in Woolwich throughout the year, including the spectacular summer 'Greenwich and Docklands International Festival'. This colourful event provides vibrant outdoor performances of theatre, music and dance for everyone to enjoy.



WOOLWICH
STATION

5
mins

Timings are approximate.
Source: www.google.co.uk/maps





GREENWICH & BLACKHEATH

Historic Greenwich has much to explore, while the picturesque village of Blackheath has an unrivalled history.

Visitors to Greenwich enjoy charming boutiques and London's only historic market set in a World Heritage Site. There is also the opportunity to explore the steeply sided park, visit the world's largest National Maritime Museum or see the stars at the world-famous Observatory.

To the south of Greenwich lies Blackheath. Renowned for its large expanse of parkland with royal links dating back to the 15th century, it also marks the start of the annual London Marathon.



BLACKHEATH

11
mins



GREENWICH

13
mins

Timings are approximate and do not include walking/transfer times.
Source: www.tfl.gov.uk



Perfect for a day out close to West Quay, the village of Blackheath is a diverse blend of Regency architecture, local boutiques and – like Greenwich – any number of interesting places to eat and drink. Greenwich Market opens seven days a week and is home to a charming mix of eccentric stalls and permanent shops.



CANARY WHARF & THE O2

The world-class entertainment on offer at the O2 and Canary Wharf is just around the corner.

Looking out from West Quay on the same side of the river is one of the country's best-loved venues. The O2 Arena welcomes some of the biggest stars in music and entertainment. This exciting space is also home to a huge cinema, bowling alleys and exhibition galleries and can accommodate as many as 20,000 people at once.

On the opposite bank of the river, Canary Wharf also boasts a thriving cultural scene. There are over 120 boutiques and big name brands plus many places to eat and drink after work. It also has a cinema, an arts programme and events running throughout the year as well as the stunning events space at the East Wintergarden.



8
mins



O2

25
mins











A GLOBAL BUSINESS HUB

The Capital's businesses are expanding eastwards from central London, finding new spaces along the river.

The City of London surrounds the iconic St Paul's Cathedral but is just one of two global financial centres only minutes from West Quay. Canary Wharf's iconic skyline is visible from riverside balconies and with the forthcoming Crossrail it will be only eight minutes away from Royal Arsenal Riverside.

With nearby London City Airport flying as far afield as New York, business travellers also benefit from direct links to Europe and the world's key business destinations. Whether travelling for business or pleasure, Heathrow will be just 50 minutes away by Crossrail.

					
LONDON CITY AIRPORT	CANARY WHARF	LIVERPOOL STREET	BOND STREET	LONDON BRIDGE	HEATHROW AIRPORT
7 mins	8 mins	14 mins	21 mins	23 mins	50 mins

Timings are approximate and do not include walking/transfer times.
Sources: www.crossrail.co.uk www.tfl.gov.uk

THRIVING BUSINESS COMMUNITY



London Docklands

West Quay is conveniently positioned close to major employment hubs like Canary Wharf and the City. There is also a thriving business scene here with new premises that play host to a range of start-up and established employers.

Investment in Woolwich High Street is attracting new retailers to the area. London City Airport is expanding, with an extended runway set to offer increased capacity for more flights to Europe. Meanwhile, London's third business district is taking off at nearby Royal Albert Dock and will become a centre for high tech overseas businesses.



CANARY WHARF

8 mins

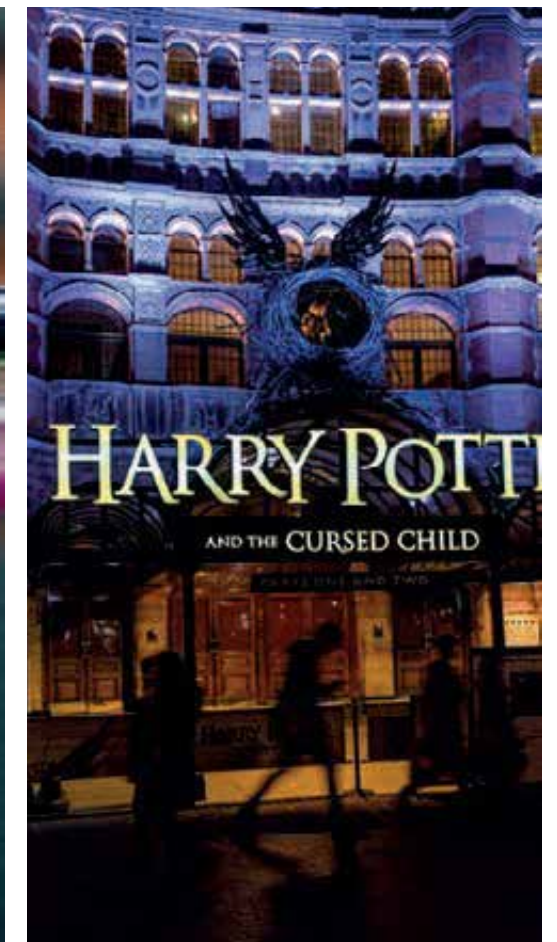
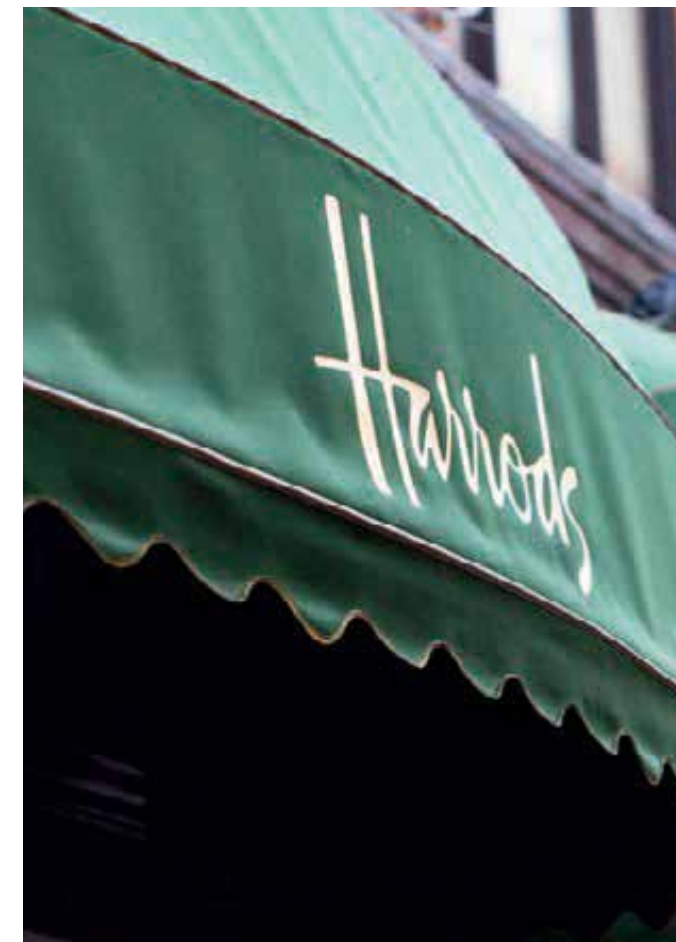


LONDON CITY AIRPORT

7 mins

Timings are approximate and do not include walking/transfer times. Sources: www.crossrail.co.uk www.tfl.gov.uk





BOND
STREET

21
mins

With so much on offer in London – from the finest Michelin starred restaurants and exclusive bars to award-winning theatre, entertainment and culture as well as the arts, fashion and shopping – the choice seems never-ending. And with the West End less than 20 minutes away* via Crossrail from Royal Arsenal Riverside, all this is right on the doorstep of West Quay.



TURYAP[®]
UK