



**HENDON**  
WATERSIDE NW9



HYDE APARTMENTS





**TURYAP**<sup>®</sup>  
UK

---

W E L C O M E T O  
H E N D O N W A T E R S I D E

---

“Architecture that integrates seamlessly with the Welsh Harp and abundant parkland will create a highly enjoyable place to live, allowing you to make use of these enviable natural assets.”

Hendrik Heynes \ Director \ Allies and Morrison Architects

## A new dawn, a new day

Something new and very exciting is happening in north London. Hendon Waterside is part of the major regeneration of West Hendon, covering over 30 acres and encompassing over 2,000 homes. The development will also provide new parks, leisure facilities and amenities within the beautiful and green surroundings of the Welsh Harp reservoir.

Hendon Waterside is revitalising this part of London by creating a vibrant new area to live, shop and work in.

The multi-million pound regeneration of neighbouring Brent Cross and Cricklewood intends to ‘create a new gateway for London and a vibrant new urban area in Barnet’\*.

Owning a home at Hendon Waterside means that you will be part of this brand new neighbourhood. Whether you enjoy it by relaxing on your balcony, taking in the glorious views of the green spaces surrounding the development, or exploring the exciting new area, this is a unique lifestyle destination.

\*Source: barnet.gov.uk

Computer generated images are indicative and for illustrative purposes only



## A visionary regeneration

The development offers residents stylish new homes, set within expansive landscaped communal gardens adjacent to the beautifully restored lakefront.

Most homes have their own private balcony or terrace and everyone will have access to an abundance of green open space and play areas.

The layout and design of Hendon Waterside have been carefully considered to ensure it delivers greatly improved pedestrian and

vehicular access into and around the development.

Leisure and community facilities, new amenities and transport links, have also been a key focus in the creation of this new and exciting neighbourhood.

Hendon Waterside has been awarded the prestigious Built for Life commendation, a Government-endorsed accolade for well-designed homes and a recognised industry seal of approval.

“The ambition that drives Hendon Waterside is to build on the already successful regeneration of the surrounding area and create a thriving, cohesive and sustainable neighbourhood where people will want to live and stay.”

Hendrik Heynes \ Director \ Allies and Morrison Architects

Computer generated images are indicative and for illustrative purposes only



Computer generated images are indicative and for illustrative purposes only



## Beautiful outside and in

Whether you choose a one, two or three-bedroom residence, you'll enjoy a home filled with light and space.

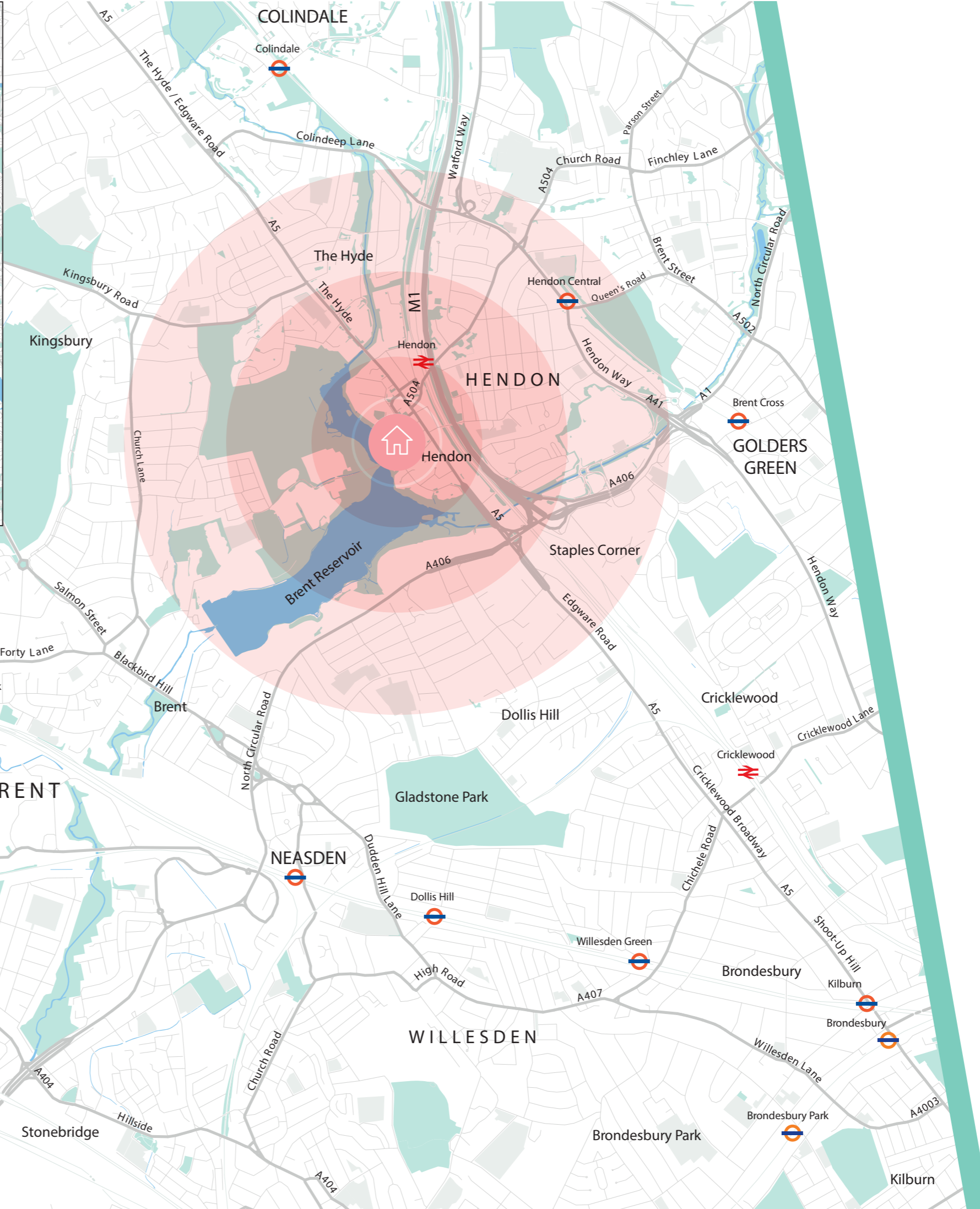
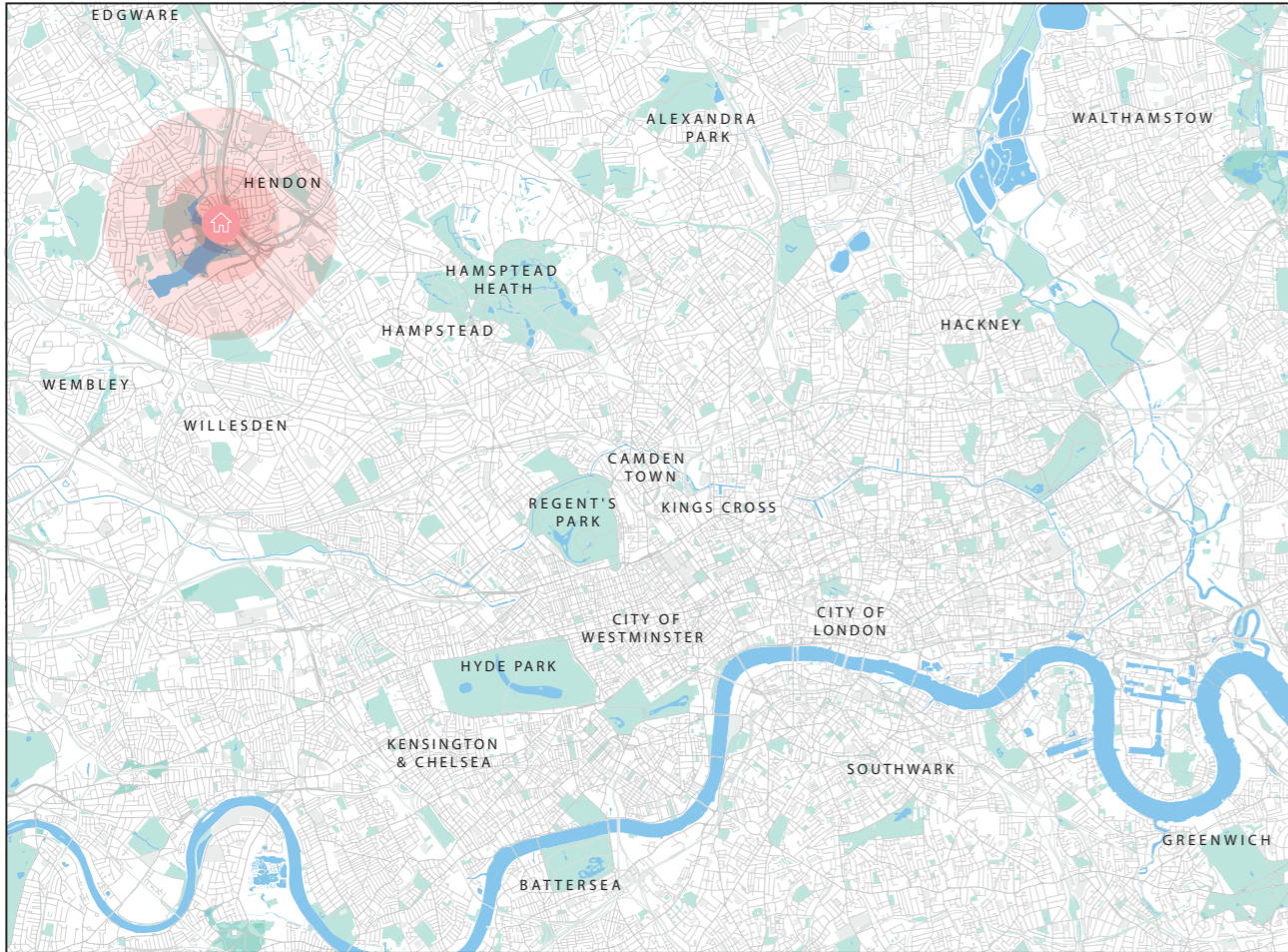
Open-plan living areas feature floor-to-ceiling glazing allowing natural light to flood in.

Kitchens are furnished with a full range of modern appliances, making cooking and entertaining a pleasure.

Contemporary bathrooms and en suites, complete with stylish fittings in white and chrome, are finished with attractive ceramic wall tiling.

For outdoor relaxation or entertaining in the comfort of your own home, every one of the apartments has its own private balcony or terrace.

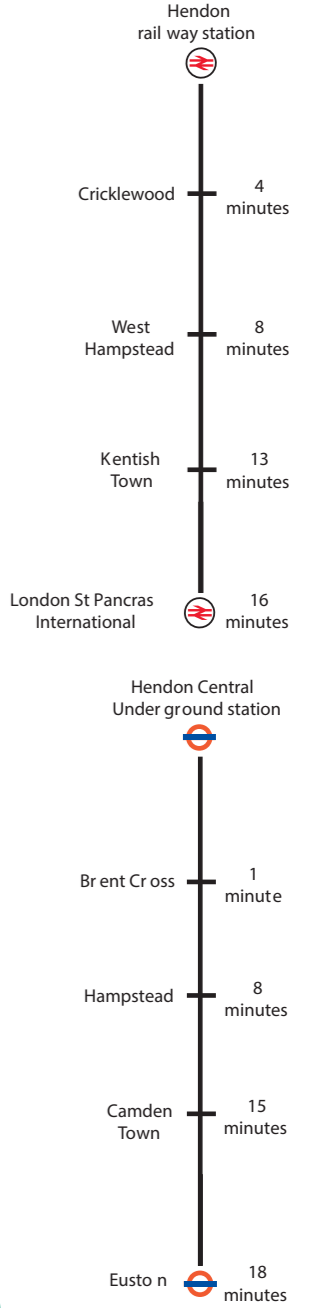
A lift will serve the apartments within the building and car parking will be available for residents.



# Surround yourself with the very best of north London

Hendon Waterside sits next to the beautiful Welsh Harp and the rejuvenated Broadway, soon to be joined by new shops and cafés.

Nearby, Brent Cross Shopping Centre is the go-to shopping and entertainment destination in north London.



Travel times based on information from Google Maps

# London within easy reach

## Walking from Hendon Waterside

7 minutes to Hendon railway station

18 minutes to Hendon Central Underground station

21 minutes to Brent Cross Shopping Centre

## Train from Hendon station Thameslink

8 minutes to West Hampstead (change for Jubilee line)

16 minutes to St Pancras International

20 minutes to Farringdon

26 minutes to Blackfriars

## Tube from Hendon Central (Northern line)

1 minute to Brent Cross

8 minutes to Hampstead

10 minutes to Belsize Park

14 minutes to Camden Town

17 minutes to Euston

28 minutes to Charing Cross

29 minutes to Oxford Circus

31 minutes to Waterloo

32 minutes to Bank

37 minutes to Euston Square

40 minutes to Liverpool Street

49 minutes to Canary Wharf

## Bus from West Hendon Broadway

20 minutes to Brent Cross Shopping Centre – 142 bus

41 minutes to Golders Green – 83 bus

## Airport by train from Hendon

29 minutes to Luton

1 hour 18 minutes to Gatwick

## Airport by car

34 minutes to Luton (27.9 miles)

40 minutes to Heathrow (22.5 miles)

54 minutes to London City (22.8 miles)

## Car from Hendon Waterside

8 minutes to the M1

32 minutes to the M25

Its proximity to rail, Underground, bus services and motorways will additionally help establish Hendon as a unique part of London.



Located in Zone 3, Hendon Waterside is just six minutes' walk to Hendon railway station. From here you can be at St. Pancras International (and on to Europe) in 16 minutes and Luton Airport in less than half an hour.

Hendon Central Underground station on the Northern line is about 18 minutes' walk away, getting you to Bank and the West End in approximately half an hour. Bus routes are well served too with regular services to Brent Cross and Golders Green.

The M1 and M25 are both within easy reach and the nearby A5 runs straight into central London. And, with the added bonus of a car club, you can rent a car to get around as and when you need to.





## Natural beauty and wildlife

Originally built to supply water to the Regent's Canal, today the Welsh Harp is a valuable leisure destination. Both a Site of Special Scientific Interest and a Local Nature Reserve, it's an important breeding site for waterbirds and a good place to spot other wildlife too.

With footpaths, trails and woods surrounding its 110 acres of open water, there's plenty of space for walkers and runners to explore and enjoy. To get out on the water, the Welsh Harp Sailing Association and Wembley Sailing Club offer tuition for beginners as well as racing programmes for experienced sailors. Or why not try your hand at canoeing, windsurfing or paddle boarding?





## Popular places to explore

When you're in need of a little retail therapy, Brent Cross is close by and is quickly becoming a world-class shopping and entertainment destination, complete with a new high street, shops, restaurants and leisure facilities.

Nearby areas such as Hampstead, Primrose Hill and Belsize Park are home to pavement cafés, characterful pubs and independent boutiques and restaurants, while Camden Lock is famous for its vibrant Stable Market and eclectic shops.

On leisurely weekends you can explore the 70 hectares of green space and open water that surround Hendon Waterside, nearby Fryent Country Park and a number of local golf courses. The popular RAF Museum is in neighbouring Colindale.





Computer generated images are indicative and for illustrative purposes only



Computer generated image - development layout is intended for illustrative purposes only and may be subject to planning

## Amenities

Landscaped communal gardens

All homes have outdoor space

Car parking for all homes

School\*

Community centre \*

Hendon railway station (7-minute walk)

\* Proposed amenities – please speak to a Sales Adviser for more information.



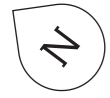


---

THE PLANS

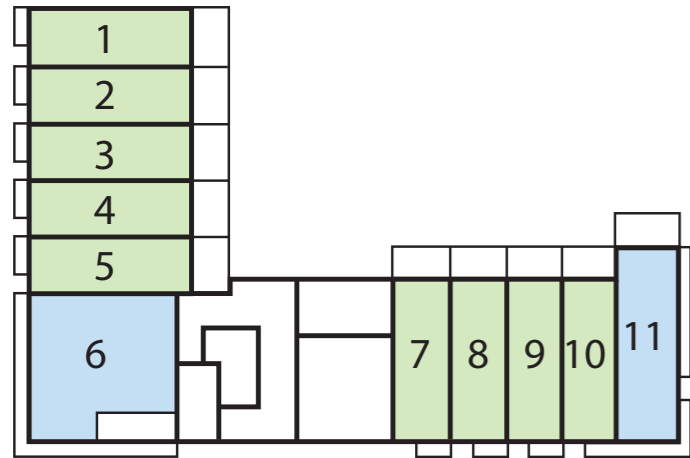
---

# The Hyde Apartments Floor plates

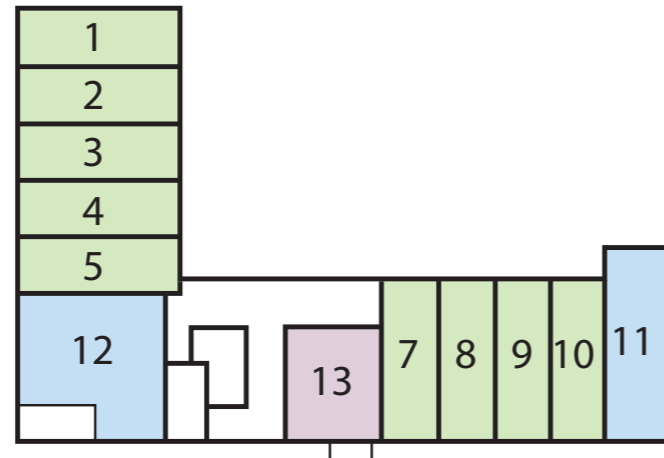


One-bedroom apartments
  Two-bedroom apartments
  Three-bedroom apartments

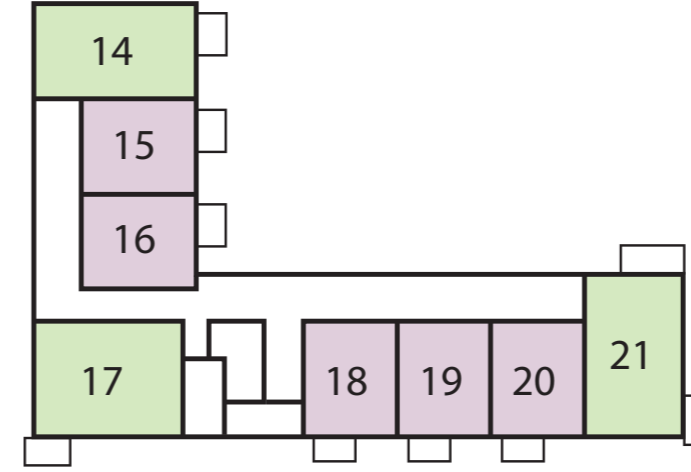
Ground Level



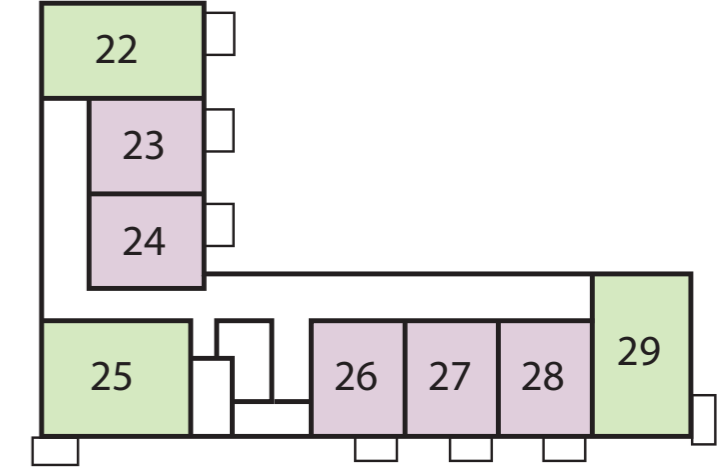
Level 1



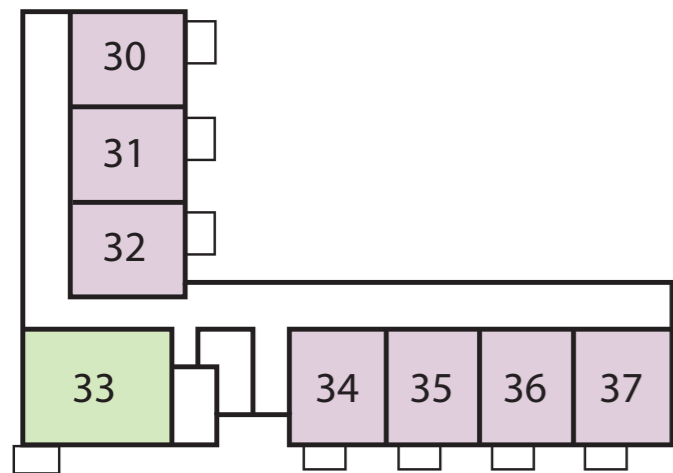
Level 2



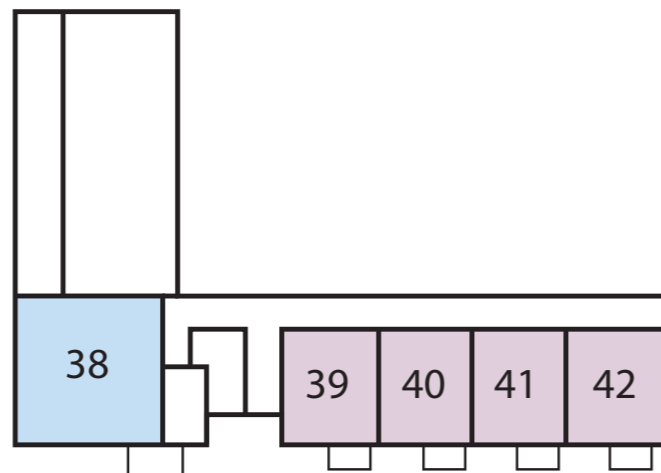
Level 3



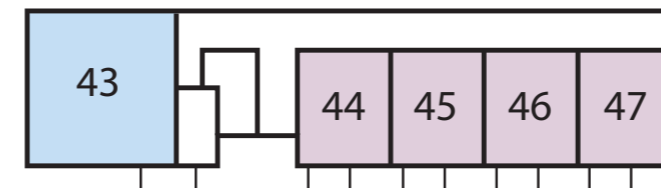
Level 4



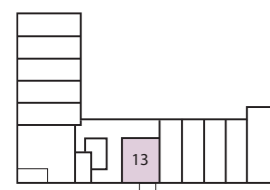
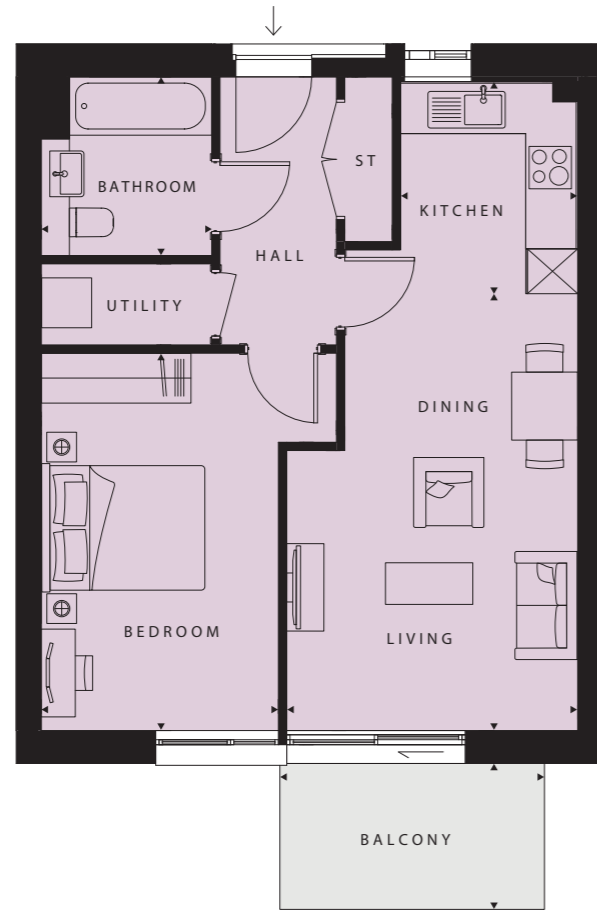
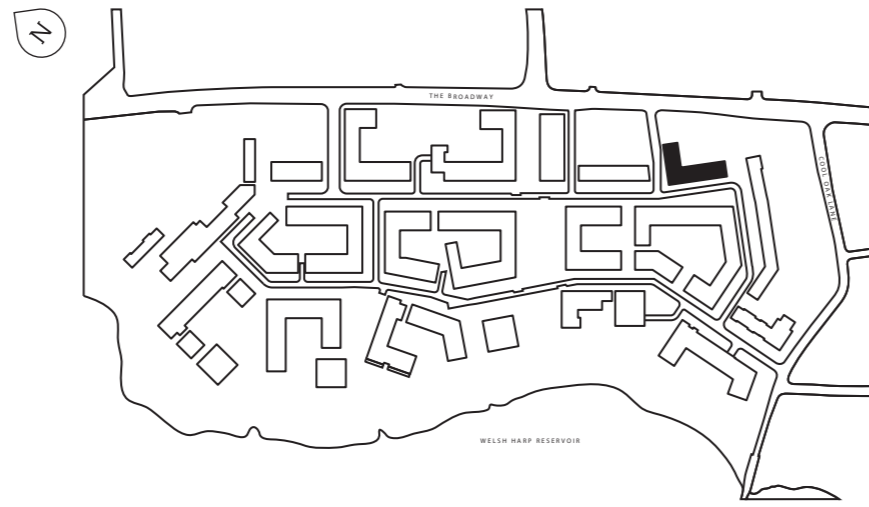
Level 5



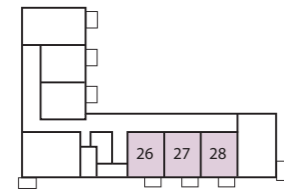
Level 6



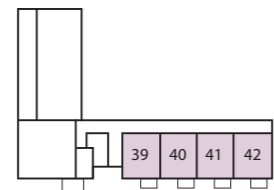
# The Hyde Apartments 1 bedroom apartment



Level 1



Level 3



Level 5

PLOT 13 (1), 26 (3), 27 (3),  
28 (3), 39 (5), 40 (5), 41 (5),  
42 (5)

Living/Dining  
17'3" x 11'5" (5255 x 3498mm)

Kitchen  
8'4" x 7'0" (2550 x 2130mm)

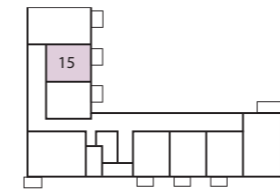
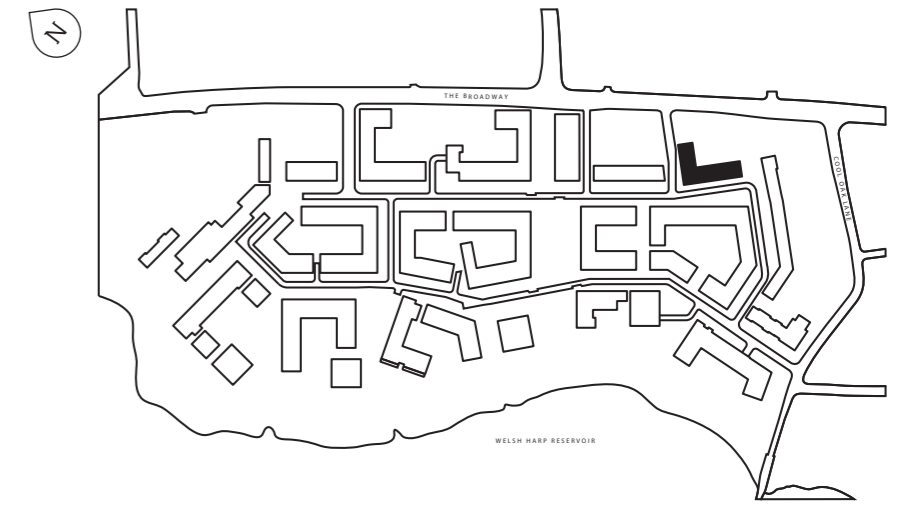
Bedroom  
14'10" x 9'4" (4538 x 2852mm)

Bath  
7'0" x 6'8" (2150 x 2050mm)

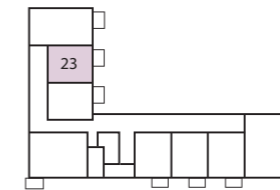
TOTAL AREA  
545 sq ft (50.6 sq m)

Balcony  
10'5" x 5'3" (3180 x 1595mm)

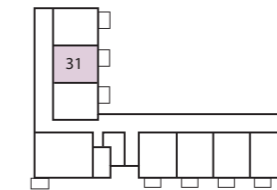
# The Hyde Apartments 1 bedroom apartment



Level 2



Level 3



Level 4

PLOT 15 (2), 23 (3), 31 (4)

Living/Dining  
17'3" x 11'5" (5255 x 3498mm)

Kitchen  
8'4" x 7'0" (2550 x 2130mm)

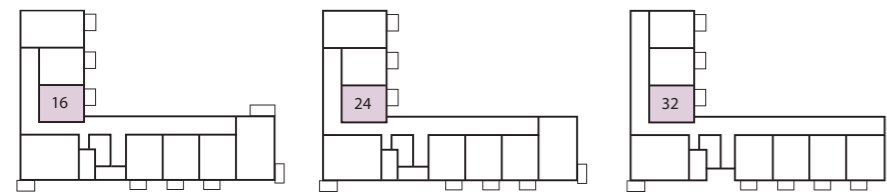
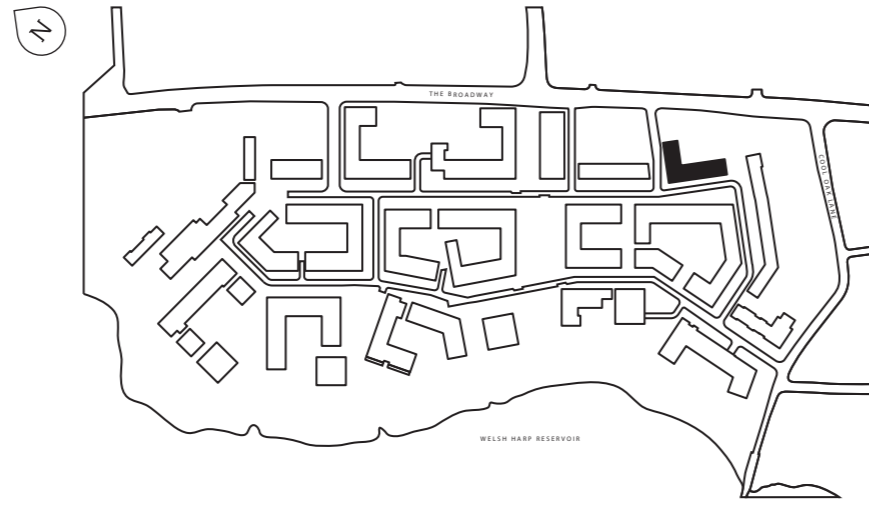
Bedroom  
14'10" x 9'4" (4538 x 2852mm)

Bath  
7'0" x 6'8" (2150 x 2050mm)

TOTAL AREA  
545 sq ft (50.6 sq m)

Balcony  
10'5" x 5'3" (3180 x 1595mm)

# The Hyde Apartments 1 bedroom apartment



Level 2

Level 3

Level 4

PLOT 16 (2), 24 (3), 32 (4)

Living/Dining  
17'3" x 11'5" (5255 x 3498mm)

Kitchen  
8'4" x 7'0" (2550 x 2130mm)

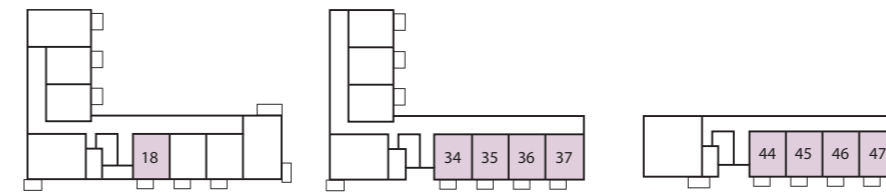
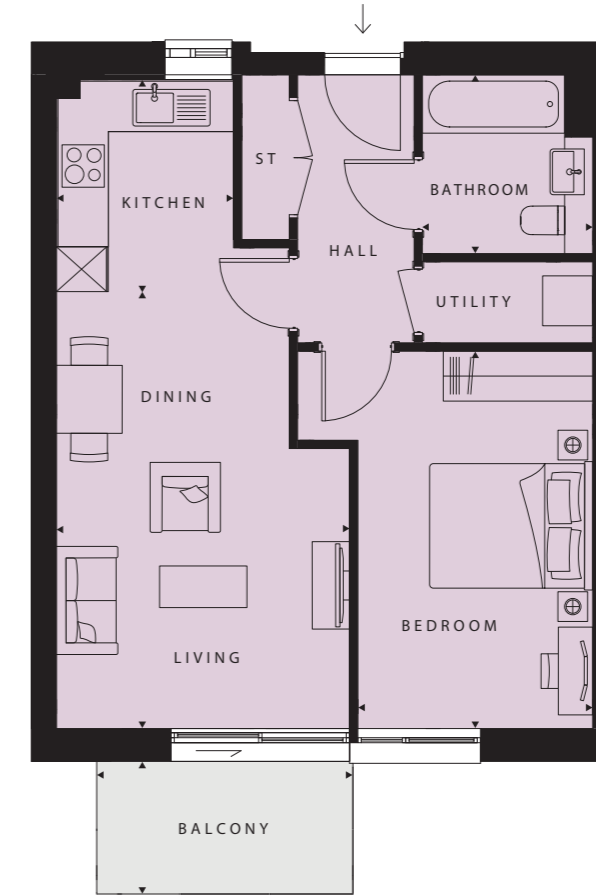
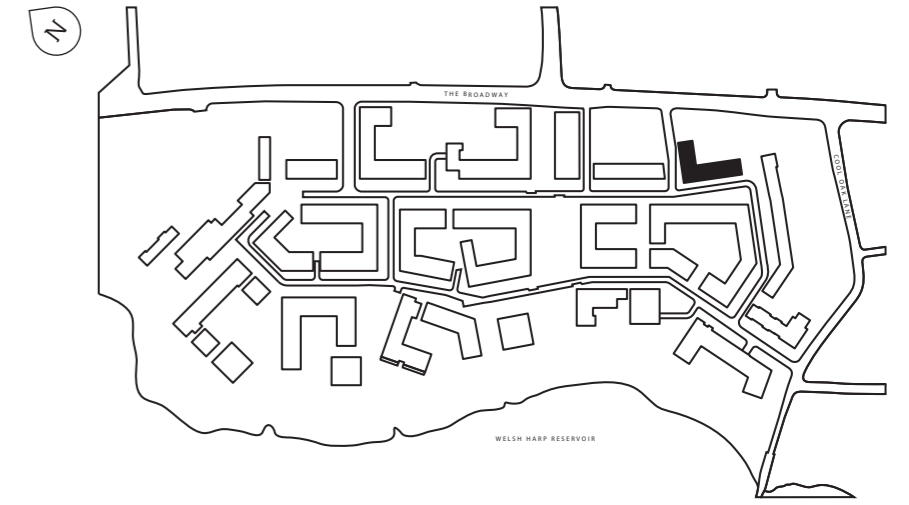
Bedroom  
14'10" x 9'4" (4538 x 2852mm)

Bath  
7'0" x 6'8" (2150 x 2050mm)

TOTAL AREA  
545 sq ft (50.6 sq m)

Balcony  
10'5" x 5'3" (3180 x 1595mm)

# The Hyde Apartments 1 bedroom apartment



Level 2

Level 4

Level 6

PLOT 18 (2), 34 (4), 35 (4),  
36 (4), 37 (4), 44 (6), 45 (6),  
46 (6), 47 (6)

Living/Dining  
17'3" x 11'7" (5255 x 3525mm)

Kitchen  
8'4" x 7'0" (2550 x 2130mm)

Bedroom  
14'10" x 9'3" (4539 x 2825mm)

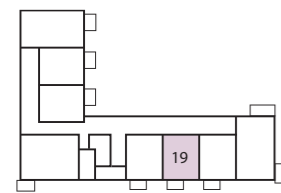
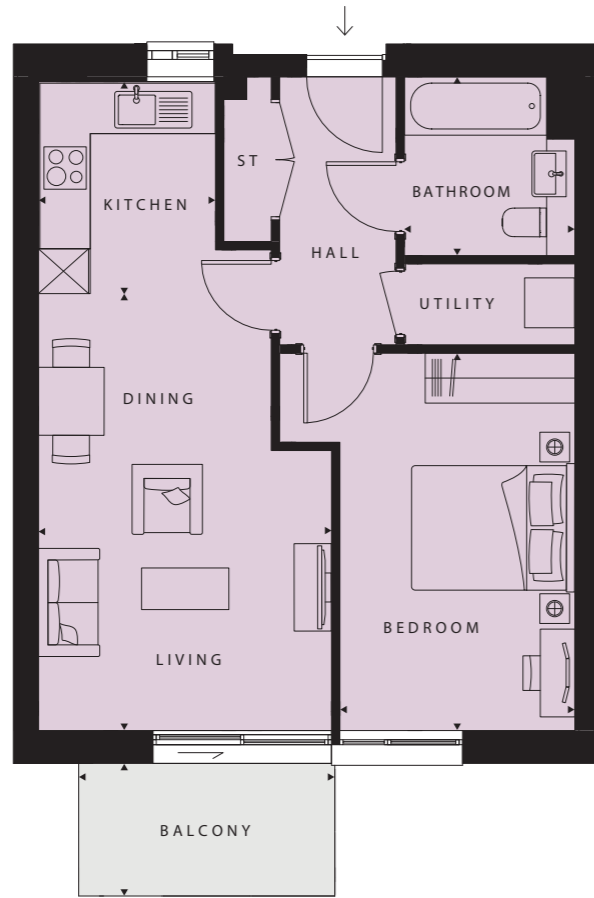
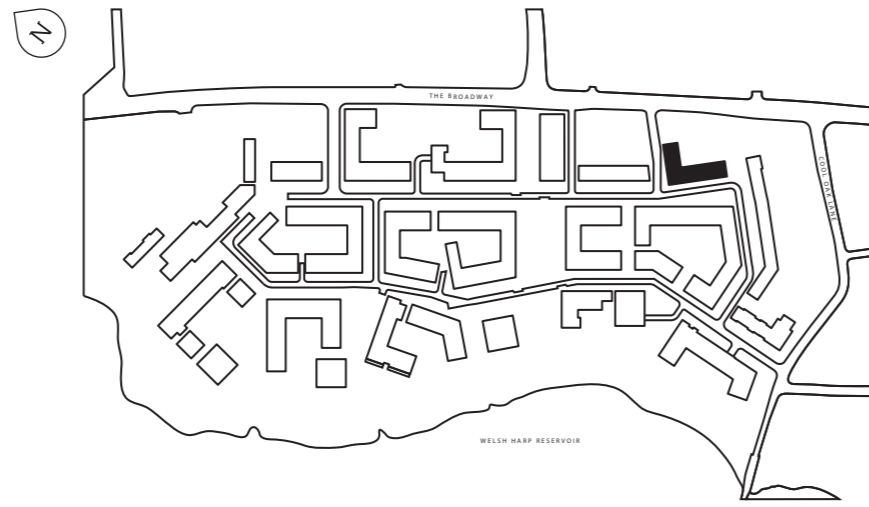
Bathroom  
7'0" x 6'8" (2150 x 2050mm)

TOTAL AREA  
545 sq ft (50.6 sq m)

Balcony  
10'5" x 5'3" (3180 x 1595mm)



# The Hyde Apartments 1 bedroom apartment



Level 2

PLOT 19 (2)

Living/Dining  
17'3" x 11'7" (5255 x 3525mm)

Kitchen  
8'4" x 7'0" (2550 x 2130mm)

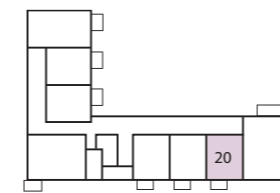
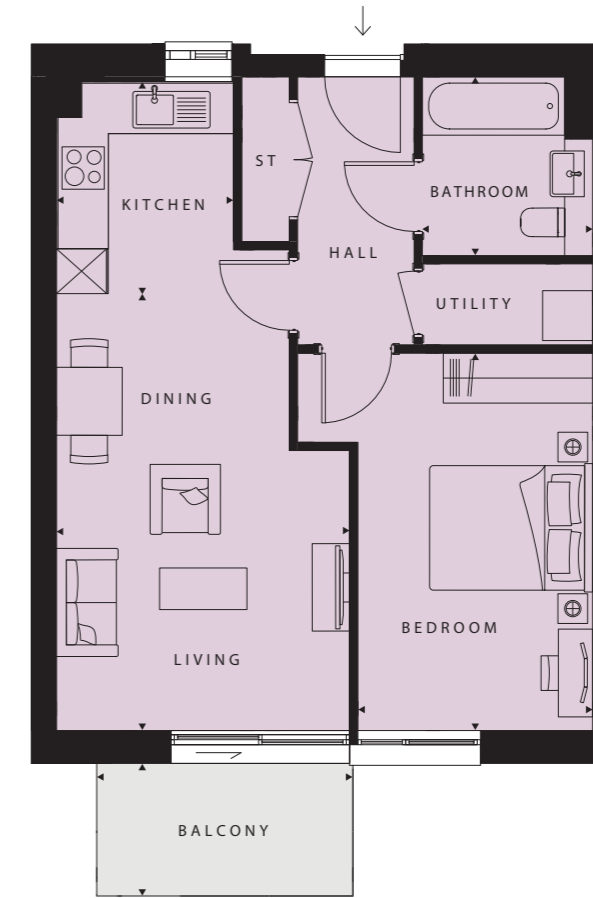
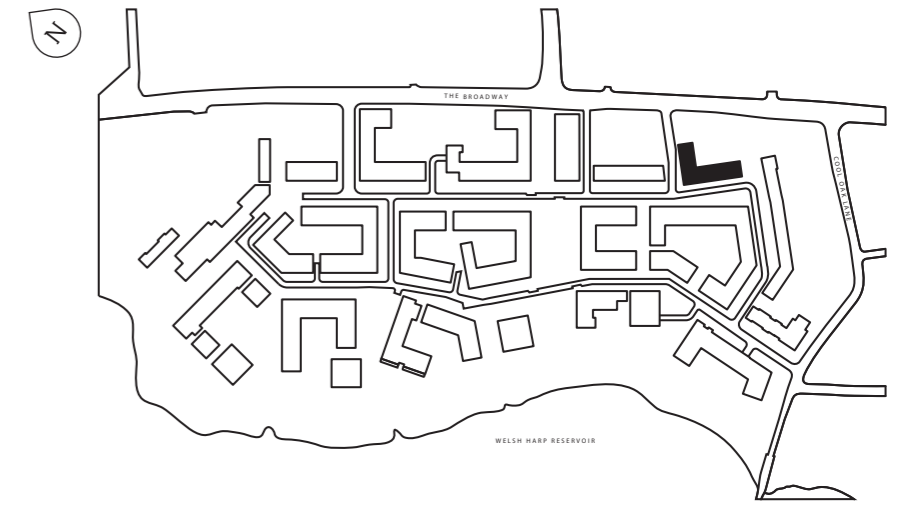
Bedroom  
14'10" x 9'3" (4539 x 2825mm)

Bathroom  
7'0" x 6'8" (2150 x 2050mm)

TOTAL AREA  
545 sq ft (50.6 sq m)

Balcony  
10'5" x 5'3" (3180 x 1595mm)

# The Hyde Apartments 1 bedroom apartment



Level 2

PLOT 20 (2)

Living/Dining  
17'3" x 11'7" (5255 x 3525mm)

Kitchen  
8'4" x 7'0" (2550 x 2130mm)

Bedroom  
14'10" x 9'3" (4539 x 2825mm)

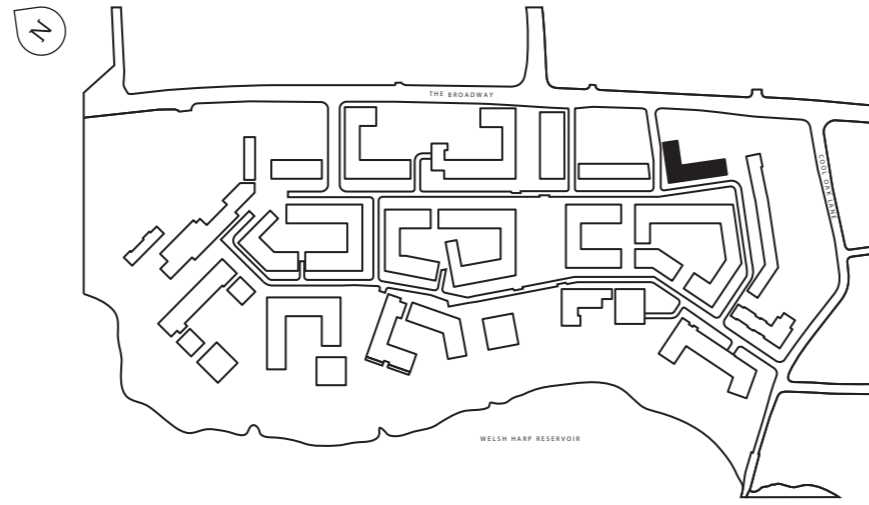
Bathroom  
7'0" x 6'8" (2150 x 2050mm)

TOTAL AREA  
545 sq ft (50.6 sq m)

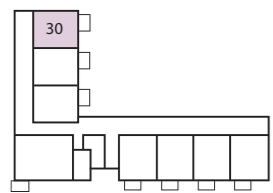
Balcony  
10'5" x 5'3" (3180 x 1595mm)

# The Hyde Apartments

## 1 bedroom apartment



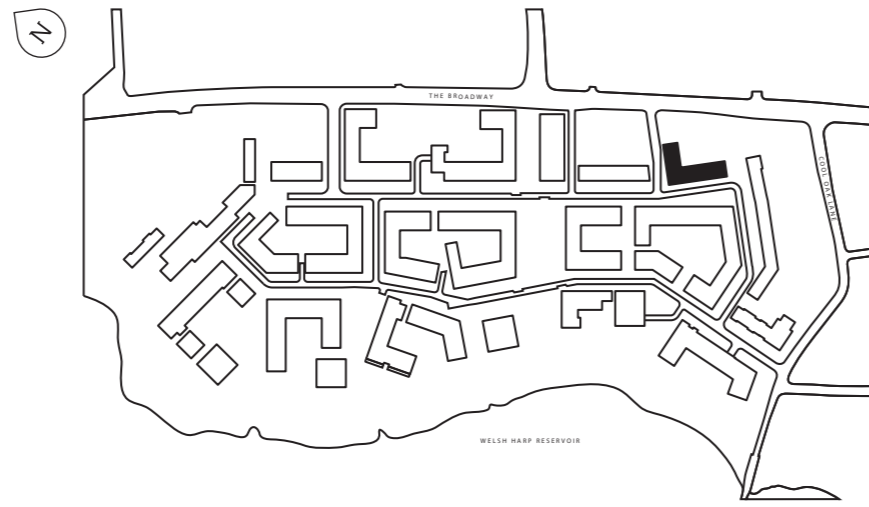
PLOT 30 (4)
Living/Dining 17'3" x 11'5" (5255 x 3498mm)
Kitchen 8'4" x 7'0" (2550 x 2130mm)
Bedroom 14'10" x 9'4" (4538 x 2852mm)
Bath 7'0" x 6'8" (2150 x 2050mm)
TOTAL AREA 545 sq ft (50.6 sq m)
Balcony 10'5" x 6'2" (3180 x 1890mm)



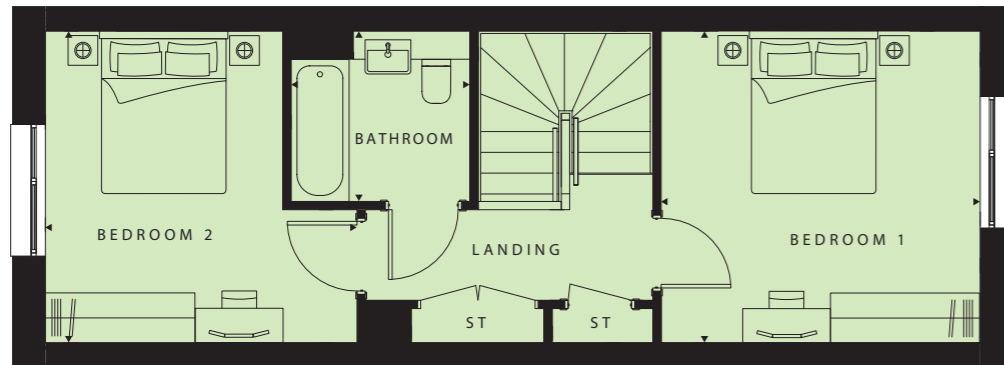
Level 4



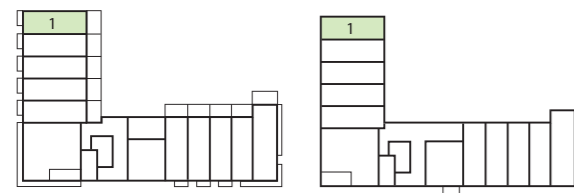
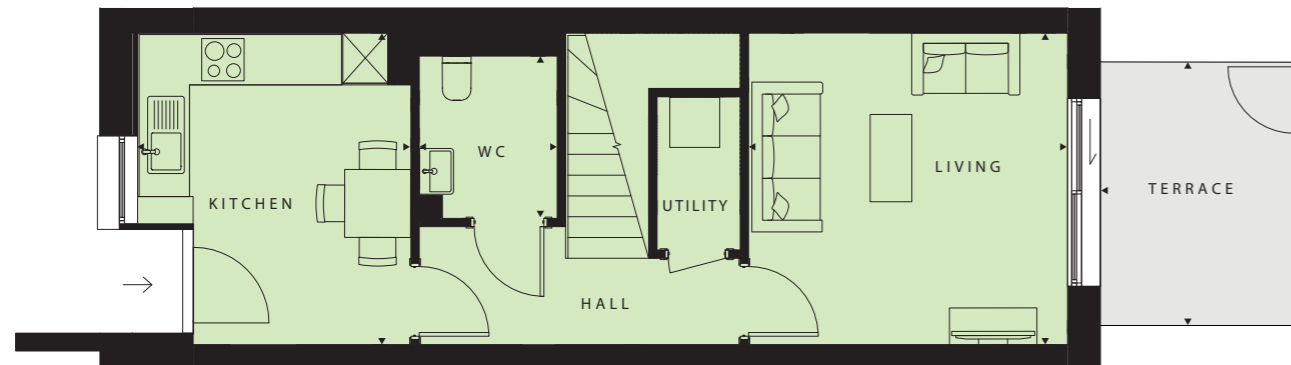
# The Hyde Apartments 2 bedroom apartment



Upper Level



Lower Level

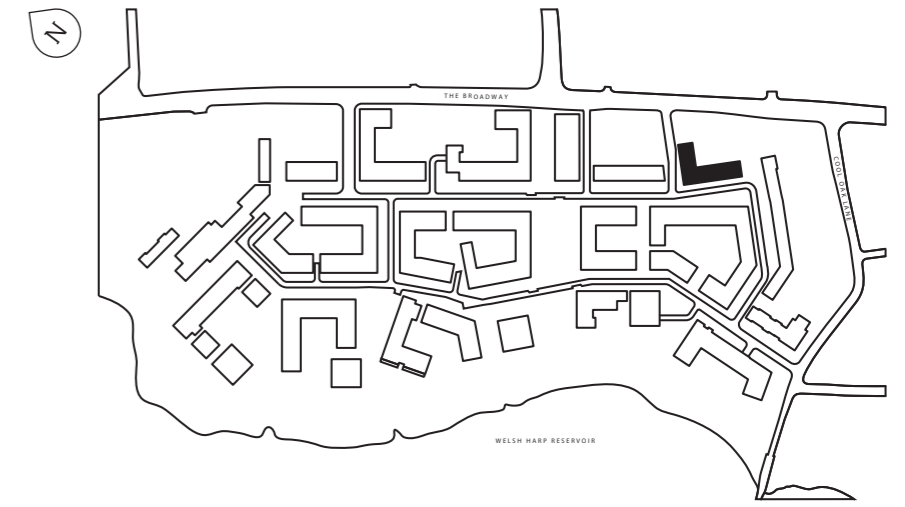


Ground Floor

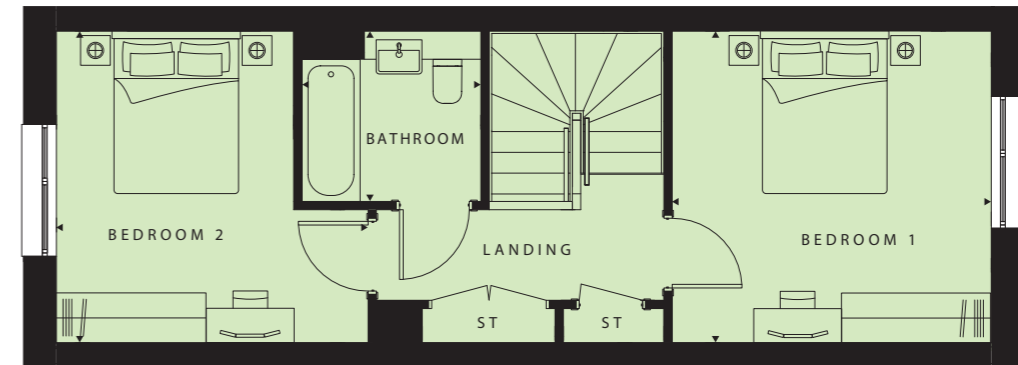
Level 1

PLOT 1 (0 & 1)	
Living	12'7" x 12'3" (3835 x 3750mm)
Kitchen	12'3" x 10'4" (3750 x 3187mm)
WC	6'5" x 5'5" (1952 x 1659mm)
Bedroom 1	12'7" x 12'3" (3835 x 3750mm)
Bedroom 2	12'3" x 12'3" (3750 x 3747mm)
Bathroom	7'0" x 6'8" (2150 x 2050mm)
TOTAL AREA	851 sq ft (79.1 sq m)
Terrace	10'4" x 7'9" (3160 x 2373mm)

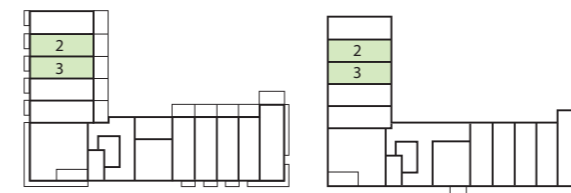
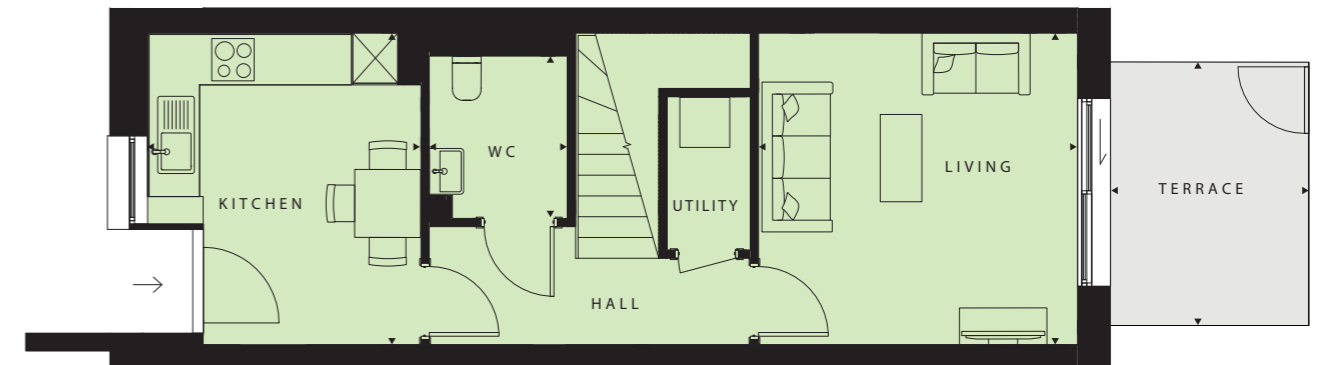
# The Hyde Apartments 2 bedroom apartment



Upper Level



Lower Level

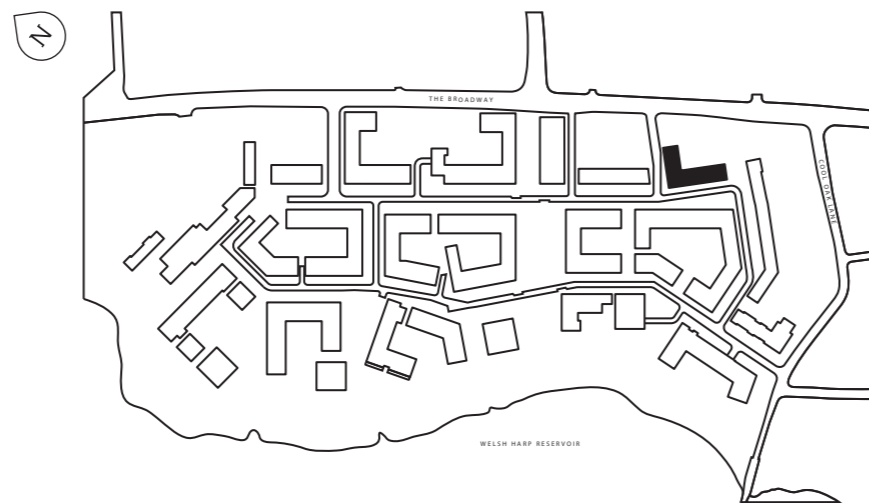


Ground Floor

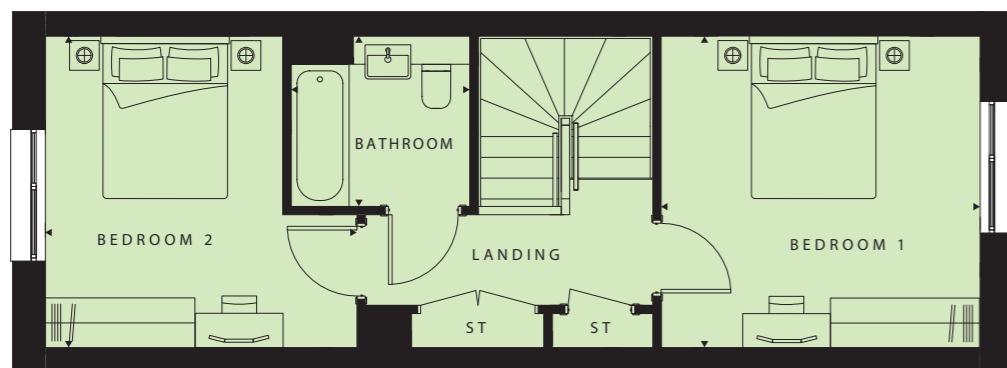
Level 1

PLOT 2 (0 & 1), 3 (0 & 1)	
Living	12'7" x 12'3" (3835 x 3750mm)
Kitchen	12'3" x 10'9" (3750 x 3286mm)
WC	6'5" x 5'5" (1952 x 1659mm)
Bedroom 1	12'7" x 12'3" (3835 x 3750mm)
Bedroom 2	12'3" x 12'3" (3750 x 3747mm)
Bathroom	7'0" x 6'8" (2150 x 2050mm)
TOTAL AREA	855 sq ft (79.4 sq m)
Terrace	10'4" x 7'9" (3160 x 2373mm)

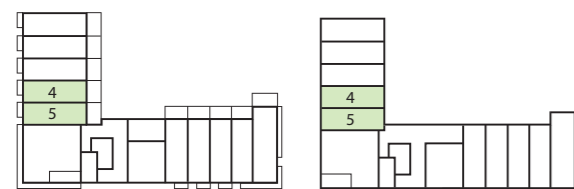
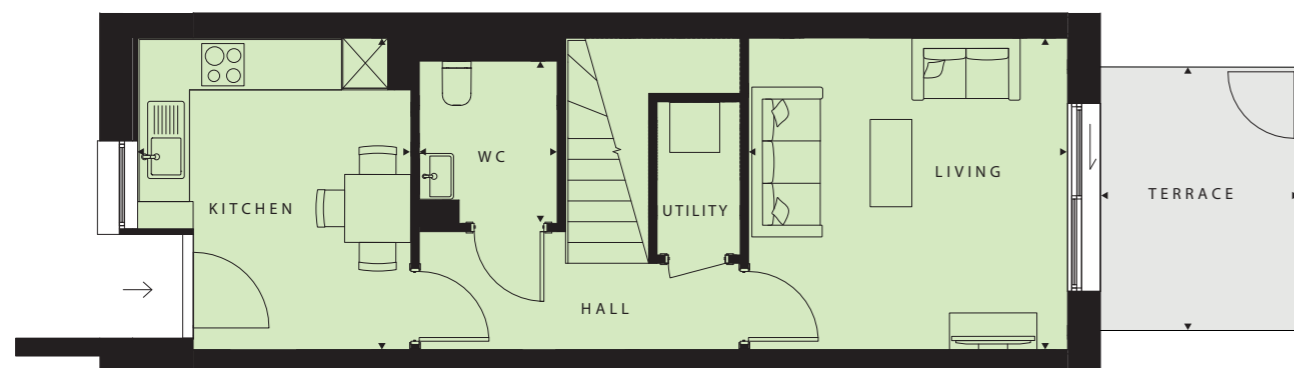
# The Hyde Apartments 2 bedroom apartment



Upper Level



Lower Level

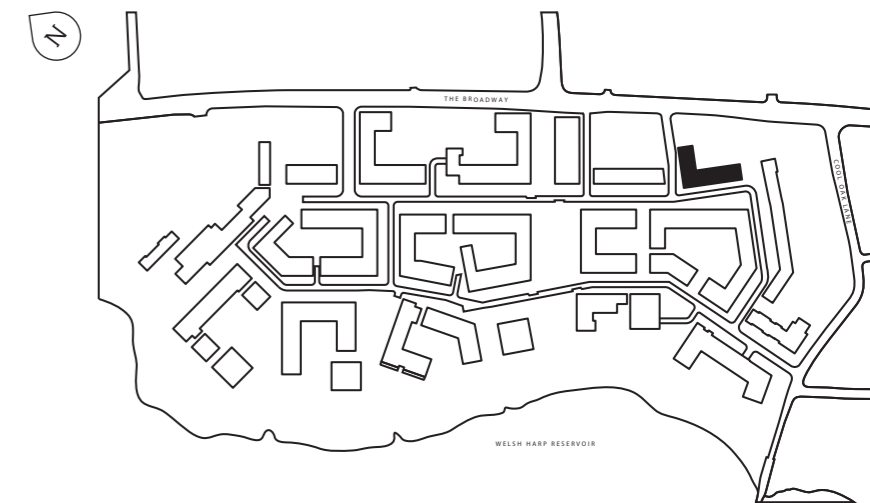


Ground Floor

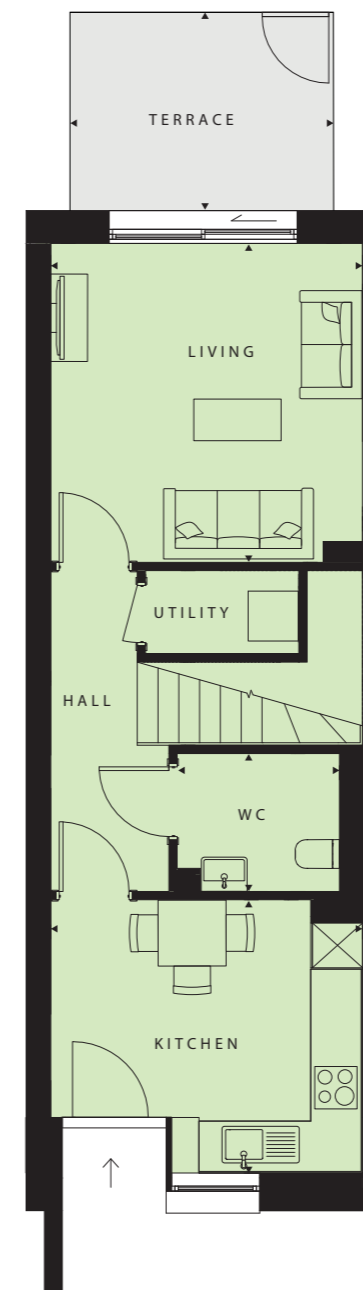
Level 1

PLOT 4 (0 & 1), 5 (0 & 1)	
Living	12'7" x 12'3" (3835 x 3750mm)
Kitchen	12'3" x 10'9" (3750 x 3286mm)
WC	6'5" x 5'5" (1952 x 1659mm)
Bedroom 1	12'7" x 12'3" (3835 x 3750mm)
Bedroom 2	12'3" x 12'3" (3750 x 3747mm)
Bathroom	7'0" x 6'8" (2150 x 2050mm)
TOTAL AREA	855 sq ft (79.4 sq m)
Terrace	10'4" x 7'9" (3160 x 2373mm)

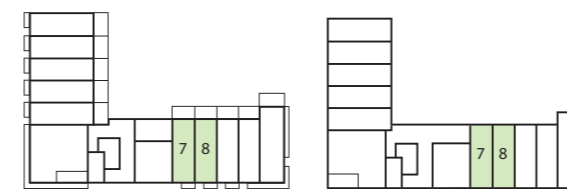
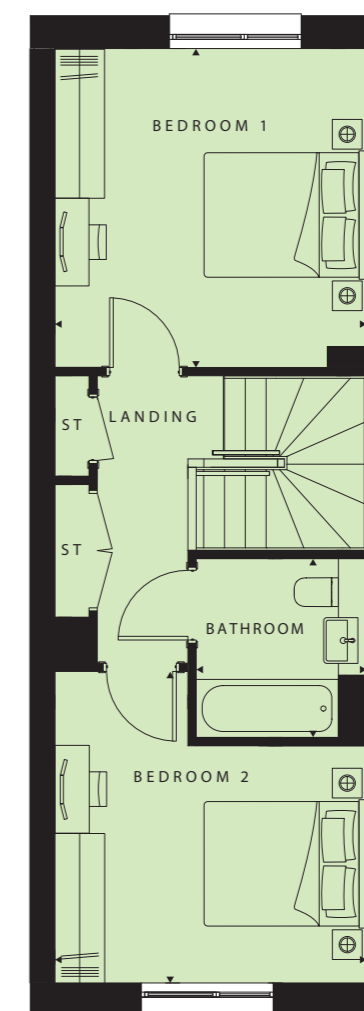
# The Hyde Apartments 2 bedroom apartment



Lower Level



Upper Level

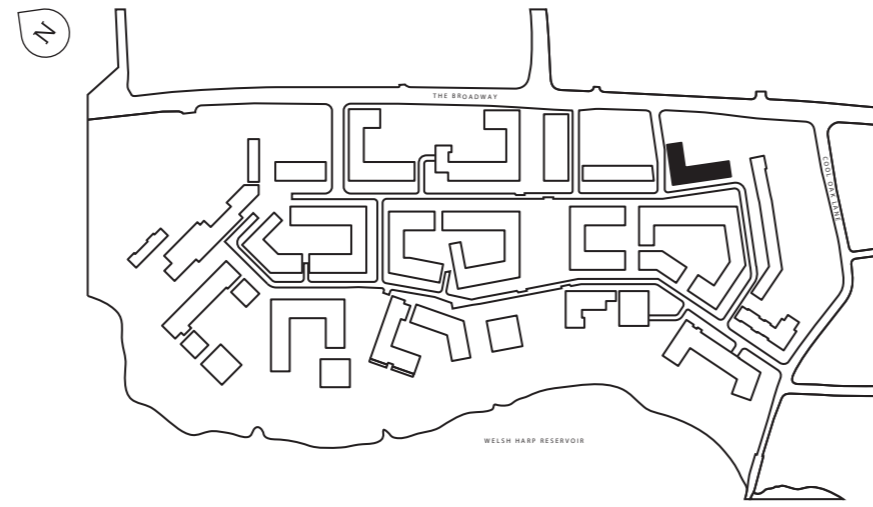


Ground Floor

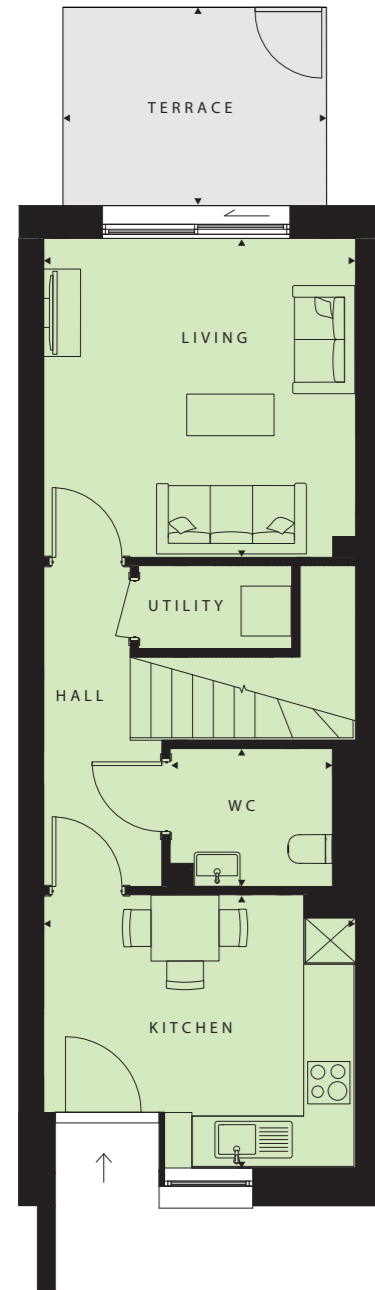
Level 1

PLOT 7 (0 & 1), 8 (0 & 1)	
Living	12'7" x 12'3" (3835 x 3750mm)
Kitchen	12'3" x 10'9" (3750 x 3286mm)
WC	6'5" x 5'5" (1952 x 1659mm)
Bedroom 1	12'7" x 12'3" (3835 x 3750mm)
Bedroom 2	12'3" x 12'3" (3750 x 3747mm)
Bathroom	7'0" x 6'8" (2150 x 2050mm)
TOTAL AREA	855 sq ft (79.4 sq m)
Terrace	10'4" x 6'8" (3160 x 2035mm)

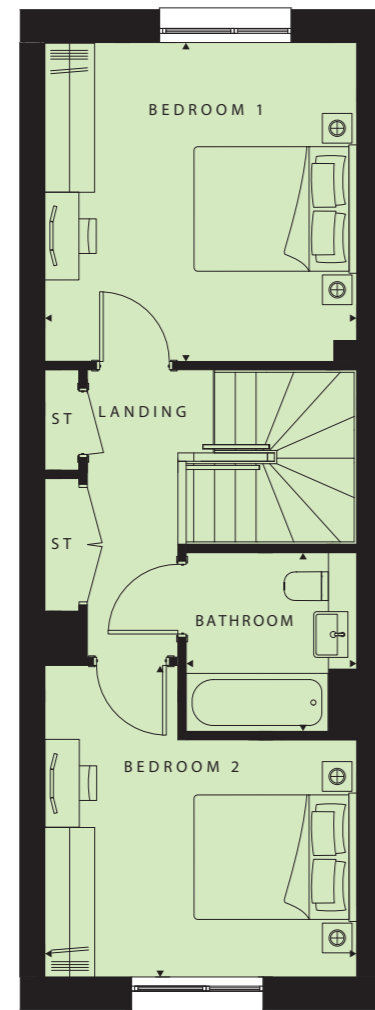
# The Hyde Apartments 2 bedroom apartment



Lower Level



Upper Level



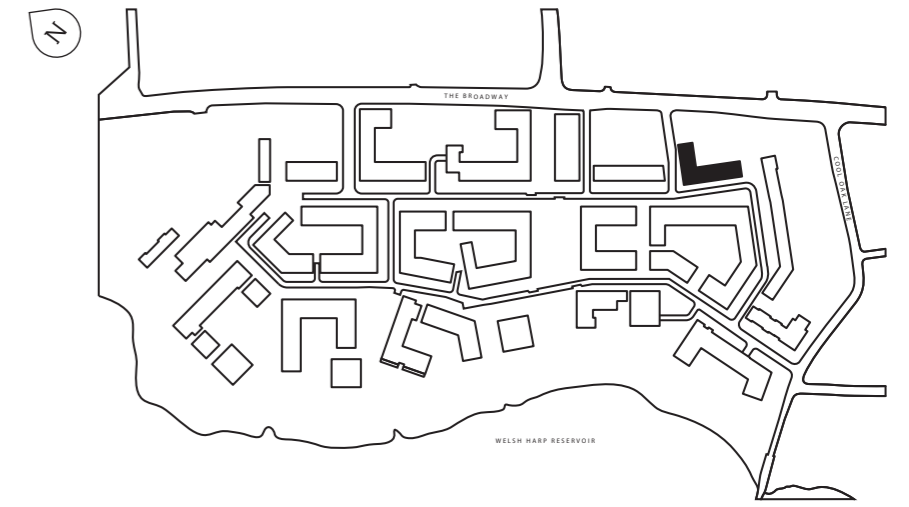
- \_\_\_\_\_
- PLOT 9 (0 & 1)
- \_\_\_\_\_
- Living  
12'7" x 12'3" (3835 x 3750mm)
- \_\_\_\_\_
- Kitchen  
12'3" x 10'9" (3750 x 3286mm)
- \_\_\_\_\_
- WC  
6'5" x 5'5" (1952 x 1659mm)
- \_\_\_\_\_
- Bedroom 1  
12'7" x 12'3" (3835 x 3750mm)
- \_\_\_\_\_
- Bedroom 2  
12'3" x 12'3" (3750 x 3747mm)
- \_\_\_\_\_
- Bathroom  
7'0" x 6'8" (2150 x 2050mm)
- \_\_\_\_\_
- TOTAL AREA  
855 sq ft (79.4 sq m)
- \_\_\_\_\_
- Terrace  
10'4" x 6'8" (3160 x 2035mm)
- \_\_\_\_\_



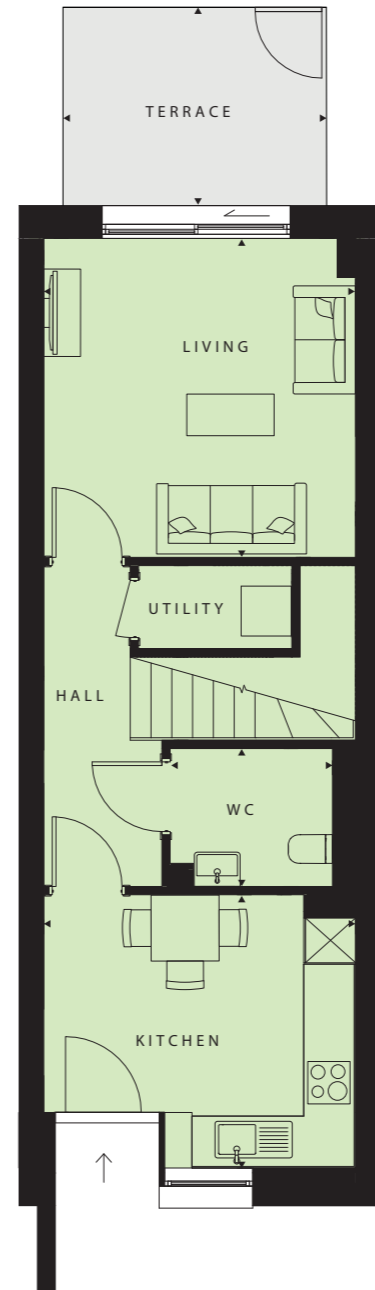
Ground Floor

Level 1

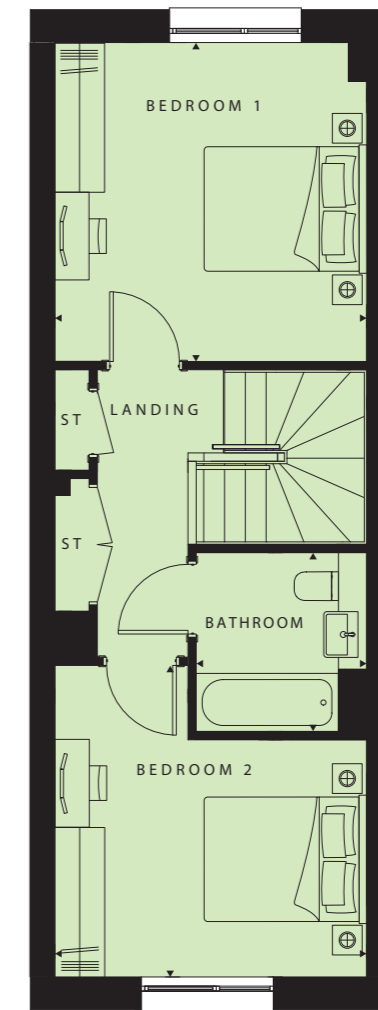
# The Hyde Apartments 2 bedroom apartment



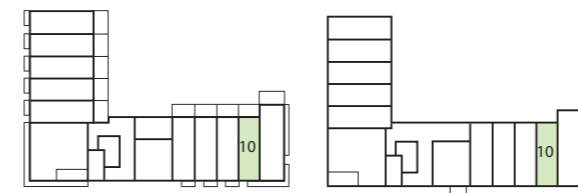
Lower Level



Upper Level



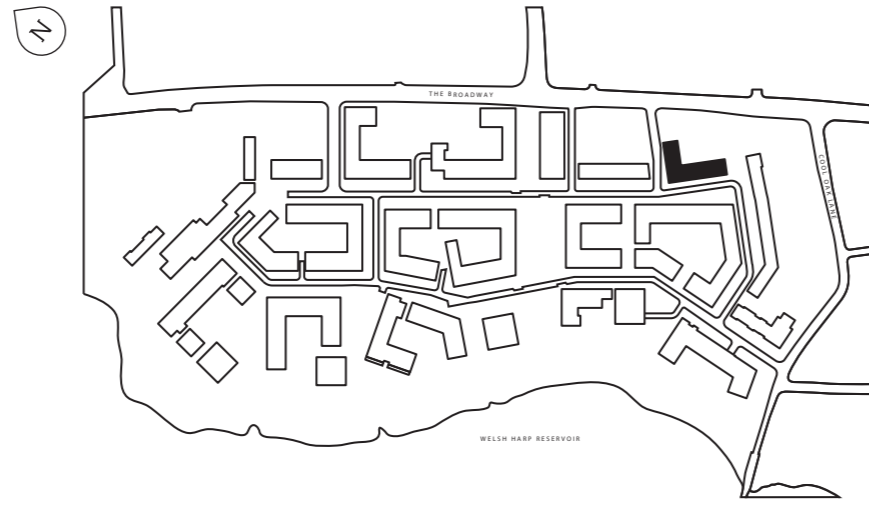
- \_\_\_\_\_
- PLOT 10 (0 & 1)
- \_\_\_\_\_
- Living  
12'7" x 12'3" (3835 x 3750mm)
- \_\_\_\_\_
- Kitchen  
12'3" x 10'9" (3750 x 3286mm)
- \_\_\_\_\_
- WC  
6'5" x 5'5" (1952 x 1659mm)
- \_\_\_\_\_
- Bedroom 1  
12'7" x 12'3" (3835 x 3750mm)
- \_\_\_\_\_
- Bedroom 2  
12'3" x 12'3" (3750 x 3747mm)
- \_\_\_\_\_
- Bathroom  
7'0" x 6'8" (2150 x 2050mm)
- \_\_\_\_\_
- TOTAL AREA  
855 sq ft (79.4 sq m)
- \_\_\_\_\_
- Terrace  
10'4" x 6'8" (3160 x 2035mm)
- \_\_\_\_\_



Ground Floor

Level 1

# The Hyde Apartments 2 bedroom apartment



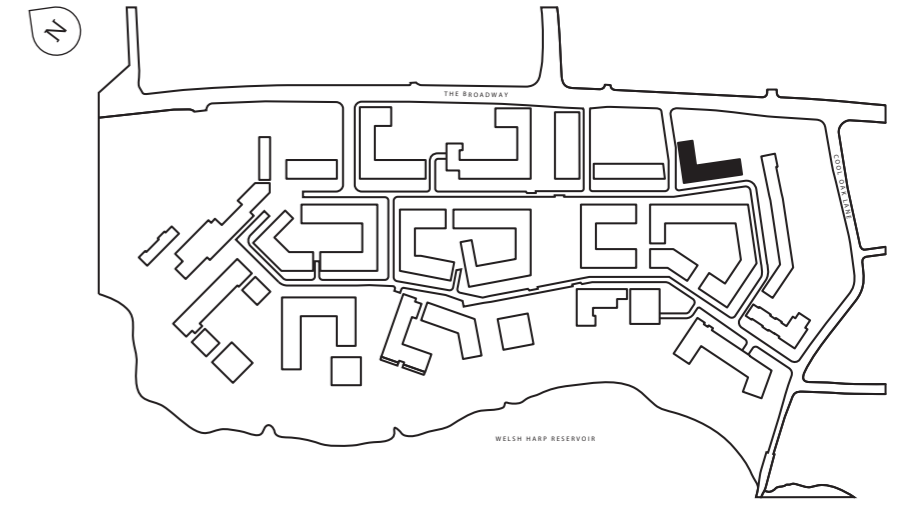
PLOT 14 (2), 22 (3)
Living/Dining 15'8" x 12'7" (4782 x 3850mm)
Kitchen 10'1" x 6'4" (3080 x 1945mm)
Bedroom 1 13'9" x 10'3" (4195 x 3118mm)
En suite 6'8" x 4'11" (2050 x 1500mm)
Bedroom 2 13'7" x 8'2" (4137 x 2500mm)
Bathroom 7'0" x 6'8" (2150 x 2050mm)
TOTAL AREA 772 sq ft (71.7 sq m)
Balcony 10'5" x 6'2" (3180 x 1890mm)



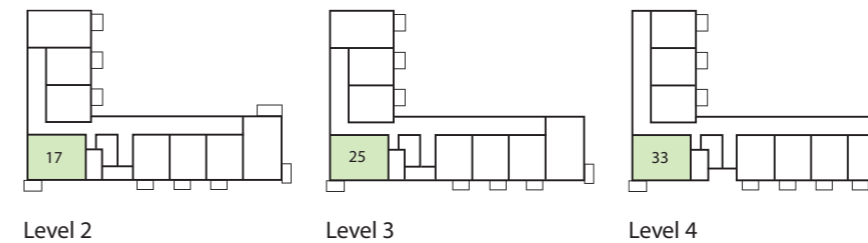
Level 2

Level 3

# The Hyde Apartments 2 bedroom apartment



PLOT 17 (2), 25 (3), 33 (4)
Living 16'9" x 13'2" (5117 x 4019mm)
Kitchen 8'3" x 8'0" (2530 x 2444mm)
Bedroom 1 16'1" x 9'10" (4905 x 3000mm)
En suite 7'11" x 5'7" (2422 x 1700mm)
Bedroom 2 11'10" x 9'3" (3605 x 2824mm)
Bathroom 8'10" x 7'2" (2700 x 2200mm)
TOTAL AREA 829 sq ft (77 sq m)
Balcony 11'7" x 6'2" (3530 x 1890mm)

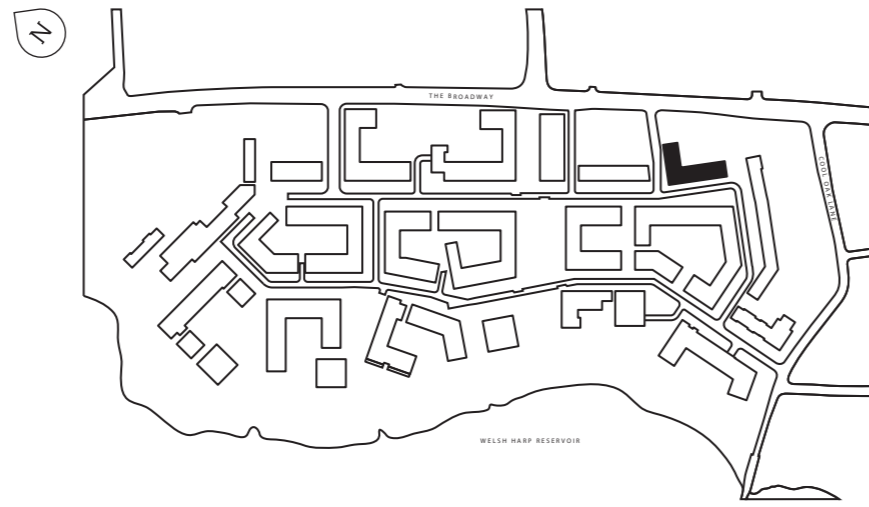


Level 2

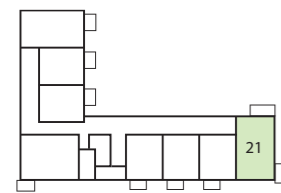
Level 3

Level 4

# The Hyde Apartments 2 bedroom apartment

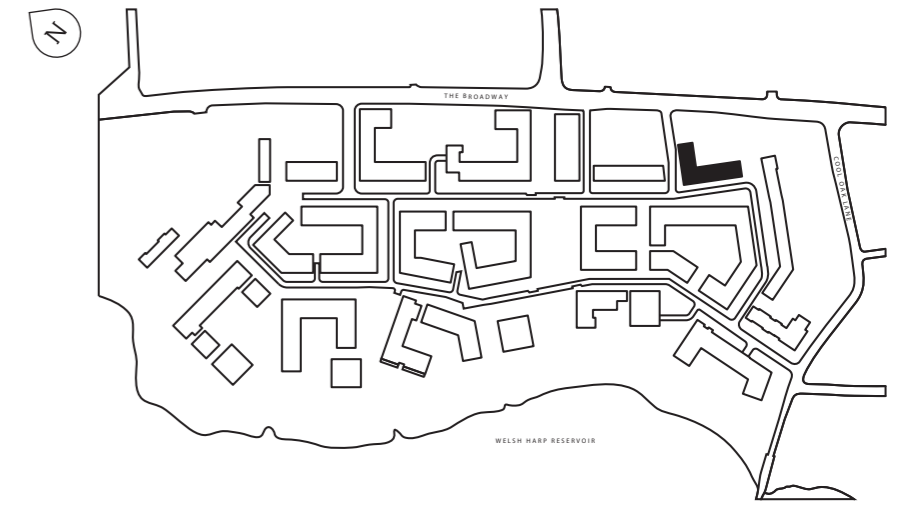


<b>PLOT 21 (2)</b>
Kitchen/Living/Dining 21'2" x 13'1" (6450 x 3992mm)
Bedroom 1 13'0" x 10'0" (3970 x 3050mm)
En suite 4'11" x 6'8" (1500 x 2050mm)
Bedroom 2 10'1" x 10'0" (3075 x 3050mm)
Bathroom 7'0" x 6'8" (2150 x 2050mm)
<b>TOTAL AREA</b> 780 sq ft (72.5 sq m)
Balcony 11'9" x 5'4" (3580 x 1640mm)
Terrace 13'2" x 6'0" (4023 x 1848mm)

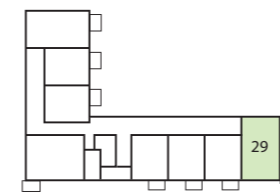


Level 2

# The Hyde Apartments 2 bedroom apartment



<b>PLOT 29 (3)</b>
Kitchen/Living/Dining 21'2" x 13'1" (6450 x 3992mm)
Bedroom 1 13'0" x 10'0" (3970 x 3050mm)
En suite 4'11" x 6'8" (1500 x 2050mm)
Bedroom 2 10'1" x 10'0" (3075 x 3050mm)
Bathroom 7'0" x 6'8" (2150 x 2050mm)
<b>TOTAL AREA</b> 780 sq ft (72.5 sq m)
Balcony 11'9" x 5'4" (3580 x 1640mm)

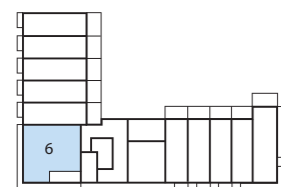
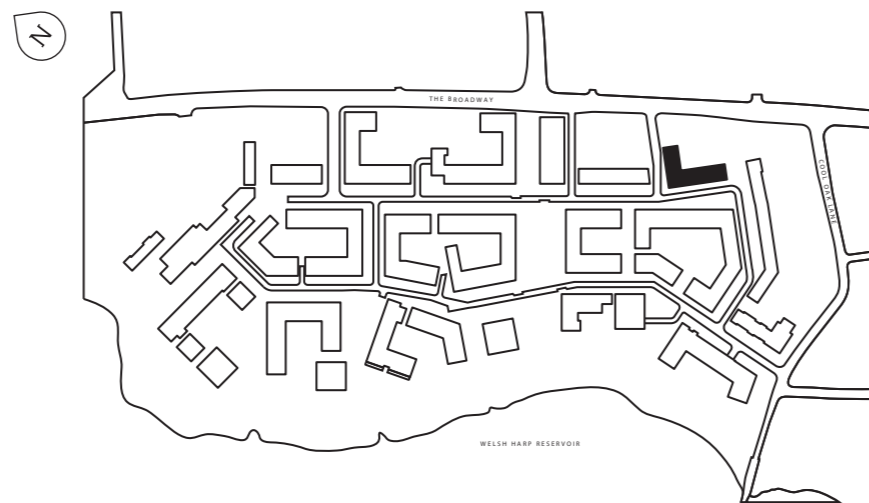


Level 3





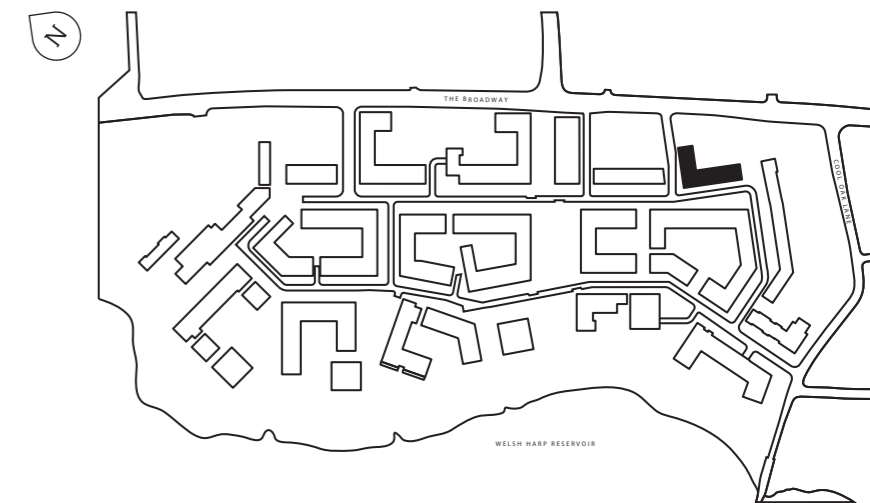
# The Hyde Apartments 3 bedroom apartment



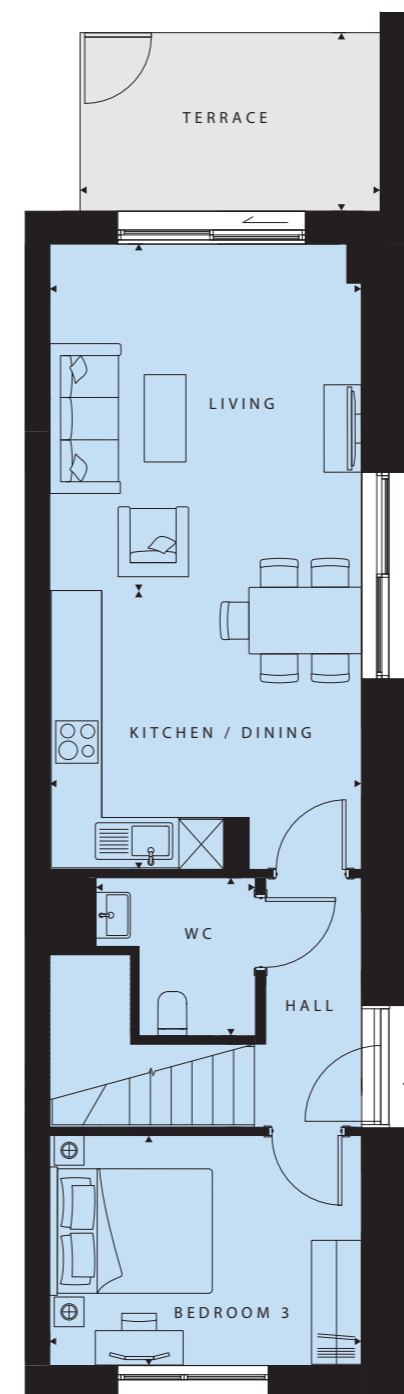
Ground Floor

<b>PLOT 6 (0)</b>	<b>Bedroom 2</b> 16'4" x 9'0" (4980 x 2750mm)
<b>Living</b> 14'2" x 11'1" (4336 x 3396mm)	<b>Bedroom 3</b> 12'5" x 9'0" (3780 x 2757mm)
<b>Kitchen/Dining</b> 14'2" x 12'2" (4336 x 3709 mm)	<b>Bathroom</b> 7'0" x 6'8" (2150 x 2050mm)
<b>Bedroom 1</b> 13'6" x 10'1" (4111 x 3088mm)	<b>TOTAL AREA</b> 988 sq ft (91.8 sq m)
<b>En suite</b> 6'8" x 4'11" (2050 x 1500mm)	<b>Terrace</b> 16'7" x 5'2" (5073 x 1585mm)

# The Hyde Apartments 3 bedroom apartment

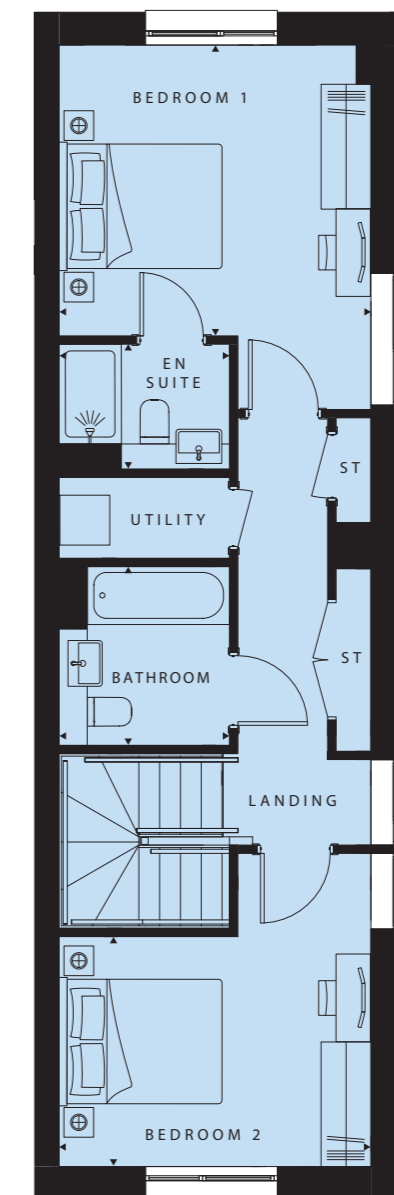


Lower Level



Ground Floor

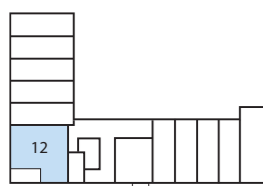
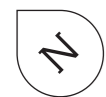
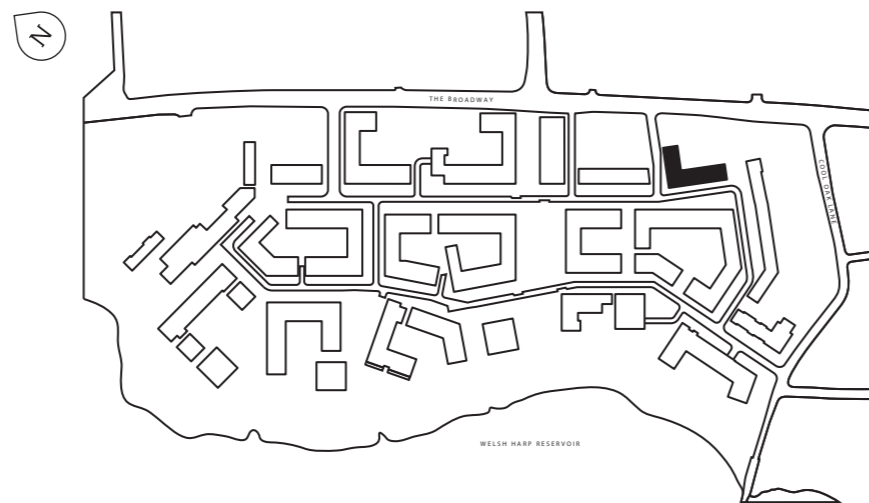
Upper Level



Level 1

<b>PLOT 11 (0 &amp; 1)</b>
<b>Living</b> 13'8" x 12'3" (4167 x 3750mm)
<b>Kitchen/Dining</b> 12'3" x 11'0" (3750 x 3354mm)
<b>WC</b> 5'8" x 5'11" (1744 x 1800mm)
<b>Bedroom 1</b> 12'3" x 11'5" (3750 x 3498mm)
<b>En suite</b> 6'8" x 4'11" (2050 x 1500mm)
<b>Bedroom 2</b> 12'3" x 9'1" (3750 x 2766mm)
<b>Bedroom 3</b> 12'3" x 9'1" (3750 x 2766mm)
<b>Bathroom</b> 7'0" x 6'8" (2150 x 2050mm)
<b>TOTAL AREA</b> 1050 sq ft (97.6 sq m)
<b>Terrace</b> 11'10" x 7'0" (3610 x 2148mm)

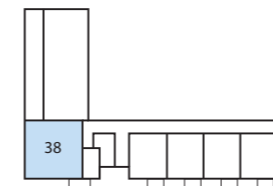
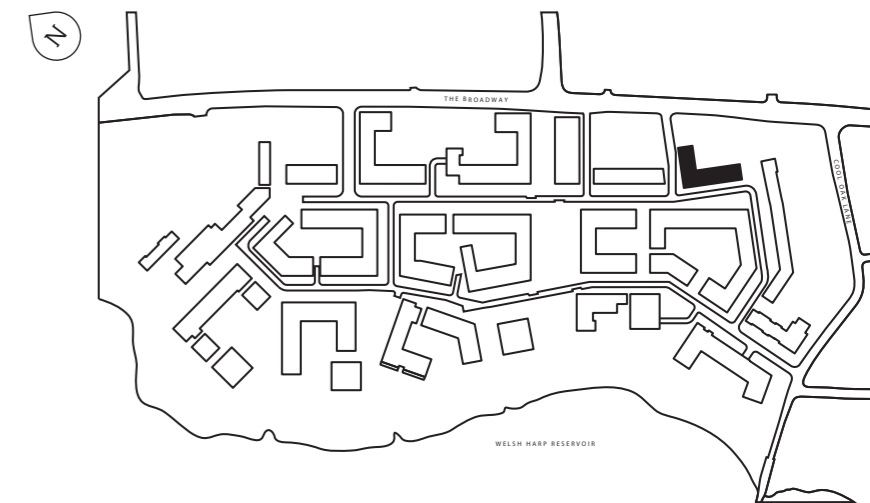
# The Hyde Apartments 3 bedroom apartment



Level 1

PLOT 12 (1)	Bedroom 2 14'11" x 9'0" (4555 x 2750mm)
Living 15'4" x 9'6" (4689 x 2900mm)	Bedroom 3 10'8" x 10'3" (3255 x 3143mm)
Kitchen/Dining 12'11" x 10'3" (3950 x 3134mm)	Bathroom 7'0" x 6'8" (2150 x 2050mm)
Bedroom 1 13'6" x 10'0" (4111 x 3050mm)	TOTAL AREA 960 sq ft (89.2 sq m)
En suite 6'8" x 4'11" (2050 x 1500mm)	Terrace 16'7" x 7'0" (5060 x 2135mm)

# The Hyde Apartments 3 bedroom apartment

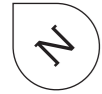
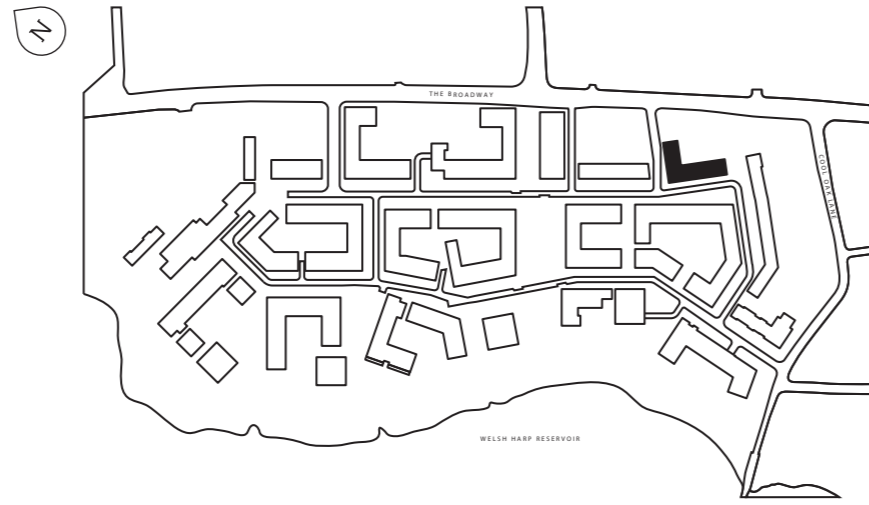


Level 5

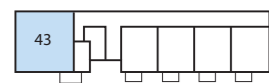
PLOT 38 (5)	Bedroom 2 15'10" x 10'2" (4838 x 3113mm)
Living 17'3" x 9'9" (5263 x 2976mm)	Bedroom 3 11'7" x 8'5" (3539 x 2580mm)
Kitchen/Dining 14'9" x 9'6" (4513 x 2904mm)	Bathroom 8'6" x 7'2" (2600 x 2200mm)
Bedroom 1 14'1" x 11'3" (4288 x 3426mm)	TOTAL AREA 1106 sq ft (102.8 sq m)
En suite 7'2" x 5'7" (2200 x 1700mm)	Balcony 13'2" x 6'6" (4030 x 1980mm)

# The Hyde Apartments

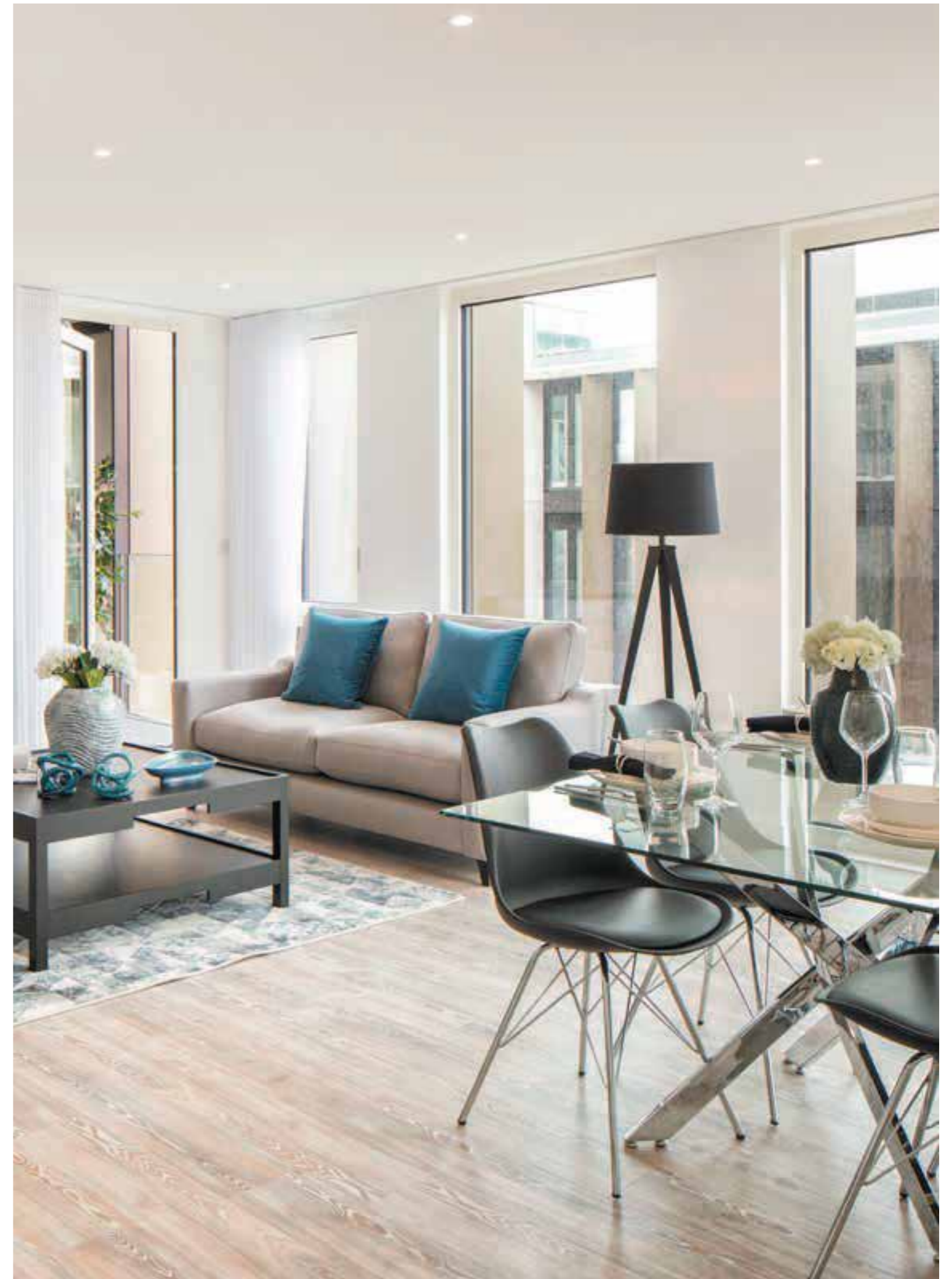
## 3 bedroom apartment



PLOT 43 (6)	Bedroom 2 15'10" x 10'2" (4838 x 3113mm)
Living 17'3" x 9'9" (5263 x 2976mm)	Bedroom 3 11'7" x 8'5" (3539 x 2580mm)
Kitchen/Dining 14'9" x 9'6" (4513 x 2904mm)	Bathroom 8'6" x 7'2" (2600 x 2200mm)
Bedroom 1 14'1" x 11'3" (4288 x 3426mm)	TOTAL AREA 1106 sq ft (102.8 sq m)
En suite 7'2" x 5'7" (2200 x 1700mm)	Balcony 13'2" x 6'6" (4030 x 1980mm)



Level 6



# Specification

## Kitchen

Individually designed handleless-style kitchens with soft close doors and drawers

Colour choice of wall and base units\*

Matching worktops and full-height upstands

Under-cabinet lighting

Stainless steel single bowl sink and chrome tap to all apartments

Fully integrated appliances including single oven, ceramic hob, extractor, dishwasher and fridge freezer

## Bathroom

White semi-recessed wash hand basin

Back to wall WC pan with soft close WC seat

Concealed cistern and dual flushplate

White steel bath

Chrome hinged bathscreen

White heated towel rail

Shaver socket

Ceramic wall tiles

Ceramic floor tiles

## En Suite

White semi-recessed wash hand basin

Back to wall WC pan with softclose WC seat

Concealed cistern and dual flushplate

White shower tray

Chrome shower doors

White heated towel rail

Shaver socket

Ceramic wall tiles

Ceramic floor tiles

## Bedrooms

TV and data point in master bedroom

Pendant lighting in bedrooms

## General

Video door entry\*\*

Fibre broadband connectivity

BT TV/Sky+/FM/data connectivity in Living Area

Spotlights in hallway, kitchen, living area and bathroom(s)

Flooring finishes available at an additional cost – please speak to a Sales Adviser for more information

## Communal areas and facilities

CCTV security system coverage across all residential building and entrances

Car parking for all homes

Supermarket within development

On-site community centre



\*Subject to stage of construction

\*\*Duplex apartments on ground level accessed directly from street will have door bells only

Images may include upgrades available at an additional cost. Please speak to a Sales Adviser for more information.

# Why Barratt London?

**Barratt London's vision**  
 Since the construction of our first London development in 1982, our goal has been to provide high-quality homes for all Londoners by focusing on excellence in design, construction and customer service. The supply of new housing is essential to the continued growth of London as a major global city and Barratt London is proud to be contributing to this with the delivery of 1,500 new homes each year.

**Five-star customer service**  
 As part of Barratt Developments Plc, the UK's largest house builder by volume, we are fully committed to delivering a superior service for our customers and have been awarded the maximum five-star rating for customer satisfaction by the Home Builders Federation every year since 2010. For our customers, this means that when you buy a Barratt London home, you can be confident you are buying a home of quality and receiving the very best in customer service.

\* "we" are the only major national house builder to be awarded this key industry award. "we" refers to the Barratt Developments PLC group brands.

**Real peace of mind**  
 Not only does every Barratt London home come with a ten-year structural guarantee from the NHBC, it also comes with a two-year fixtures and fittings warranty \*\*, giving you added peace of mind from the moment you move in.

\*\*First two years covered by Builder Warranty & NHBC Guarantee or similar. Years three-ten covered by NHBC insurance or similar. Full exclusions and limitations can be found on the NHBC website.

**Joint Venture with Metropolitan**

The West Hendon Estate regeneration is being delivered by Barratt Metropolitan Limited Liability Partnership (LLP) – a joint venture in which Barratt London is the construction partner and Metropolitan is the affordable housing provider. Barratt Metropolitan LLP supports

and funds the delivery of a range of community projects at West Hendon and in the local area. This includes the new Community Hub, where various initiatives and services are available – such as employment and training workshops, health and wellbeing classes, and activities for young people.



Lombard Wharf SW11



Aldgate Place E1



Camden Courtyards NW1



Greenland Place SE8



Enderby Wharf SE10