



# LANDMARK PLACE

AT TOWER BRIDGE EC3



**TUR YAP**<sup>®</sup>  
UK

LANDMARK PLACE

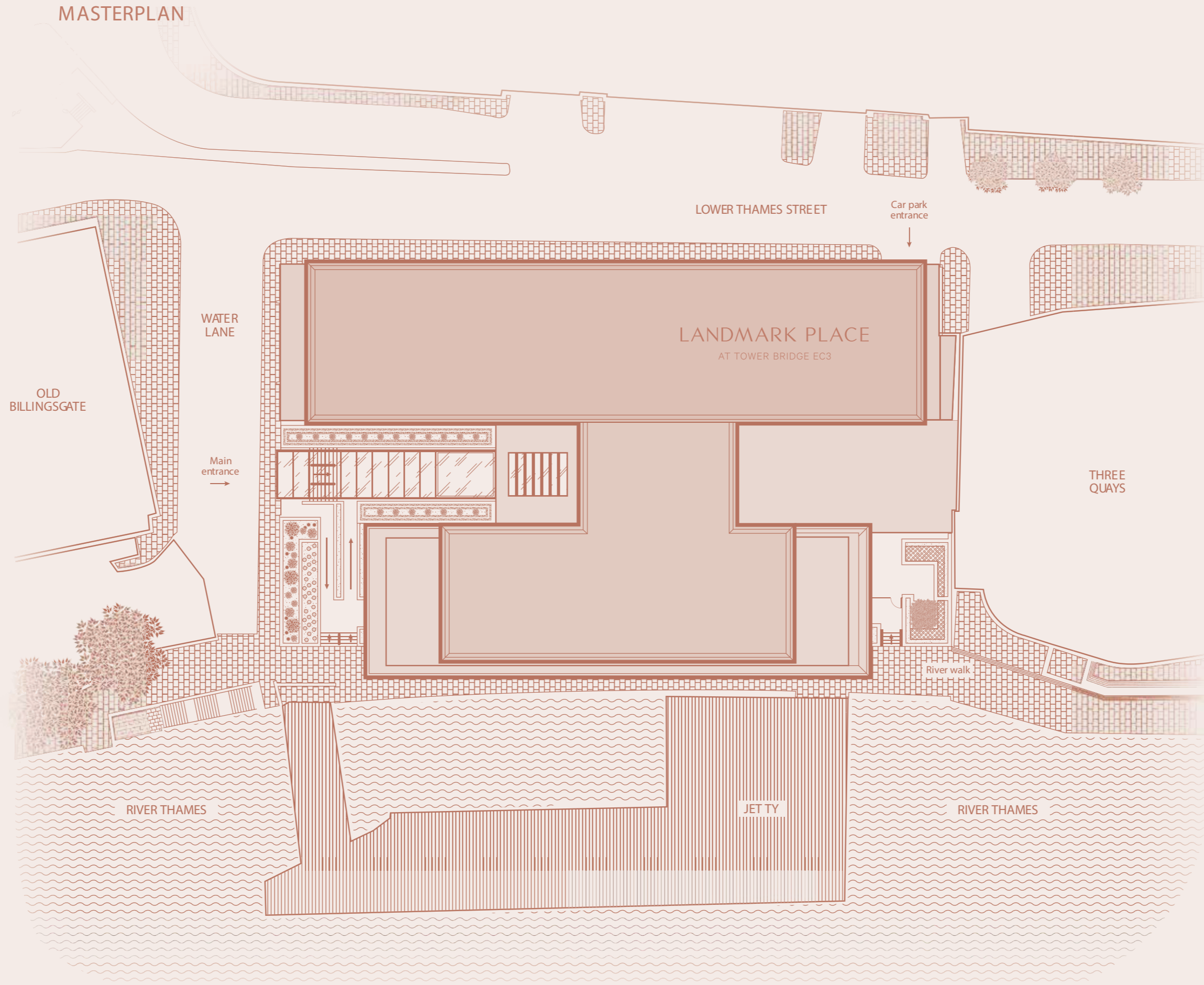
LANDMARK PLACE IS A BUILDING OF SUBSTANCE: ELEGANT, REFINED, AND ENTIRELY SUITED TO ITS ICONIC POSITION. A LANDMARK IN DESIGN, IN LOCATION, AND IN LONDON'S CONTINUING STORY.

LOCATION

LANDMARK PLACE

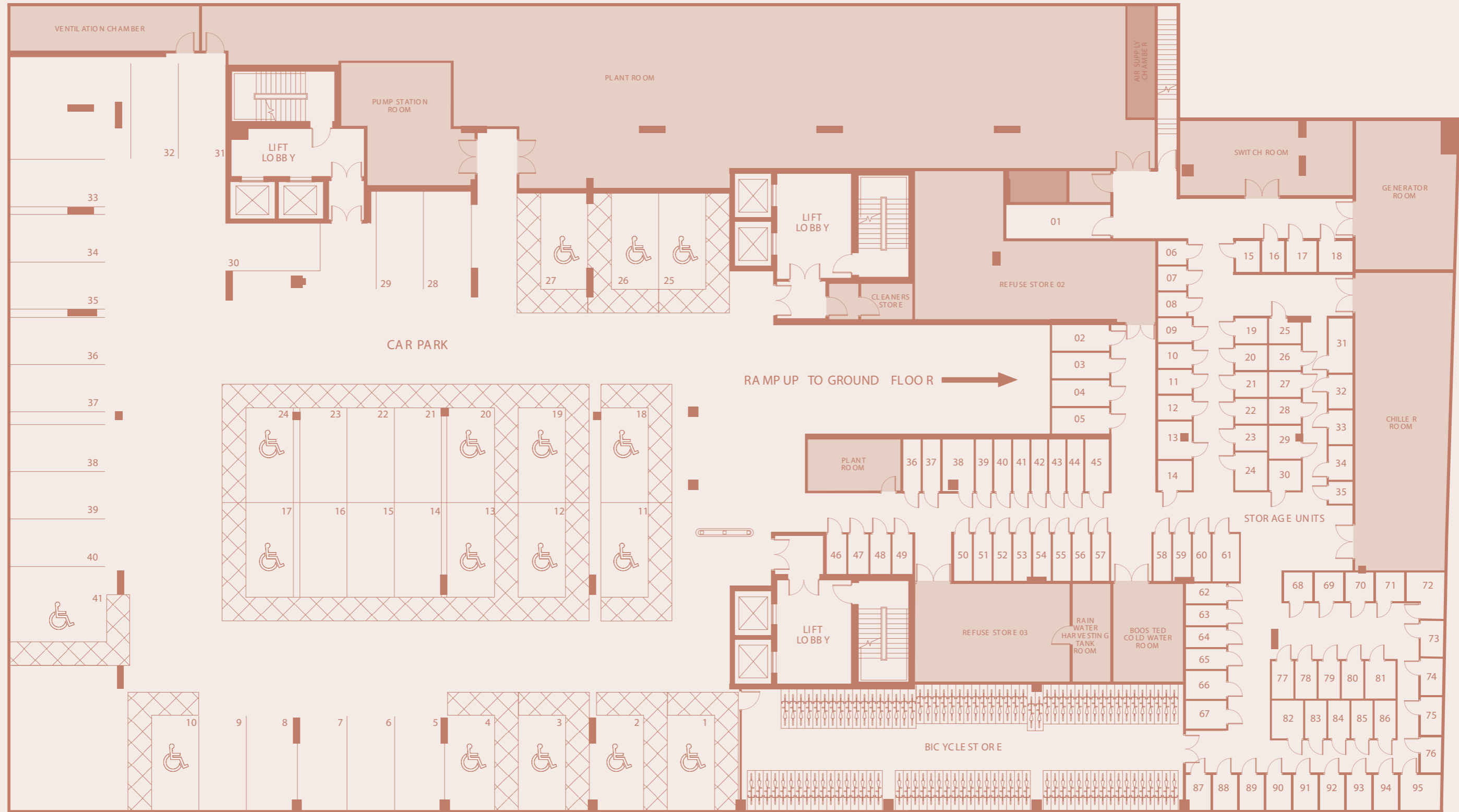
MASTERPLAN

4  
|  
5



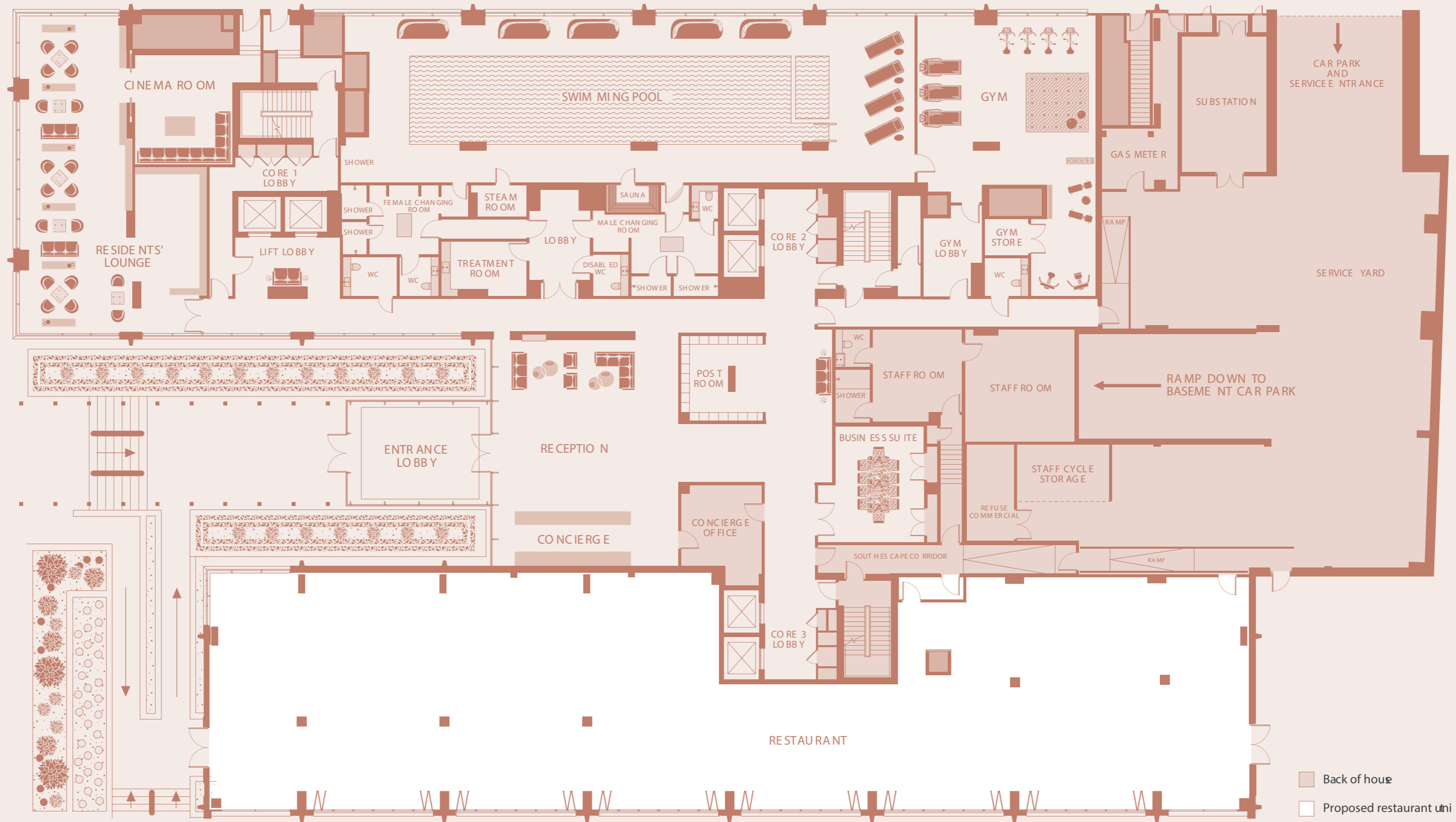
# BASEMENT PLAN

6  
|  
7



GROUND-LEVEL AMENITIES

8  
|  
9



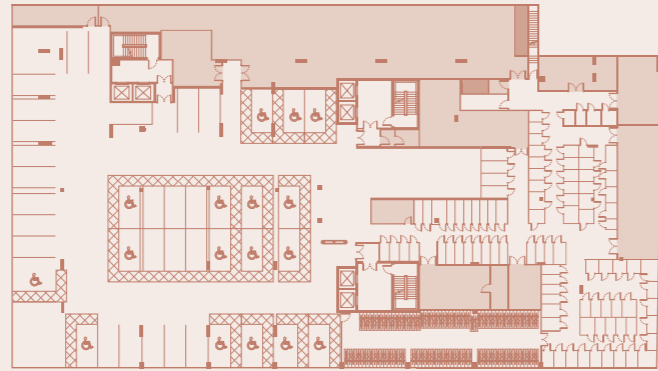
■ Back of house  
□ Proposed restaurant unit





FLOORPLATES

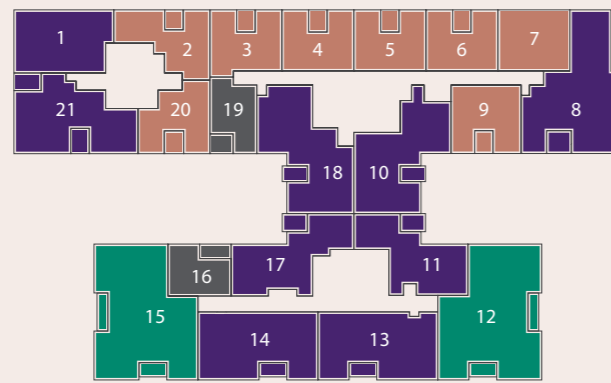
Basement



Ground floor

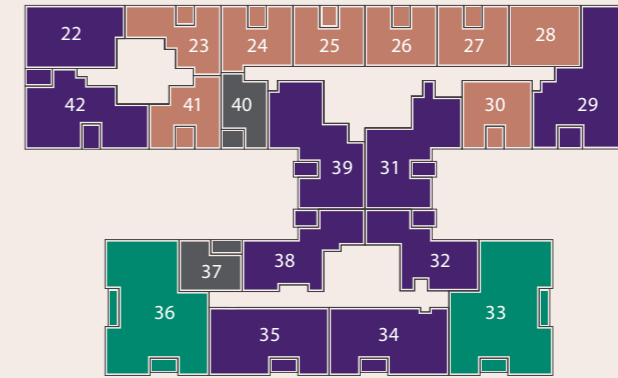


Floor 1

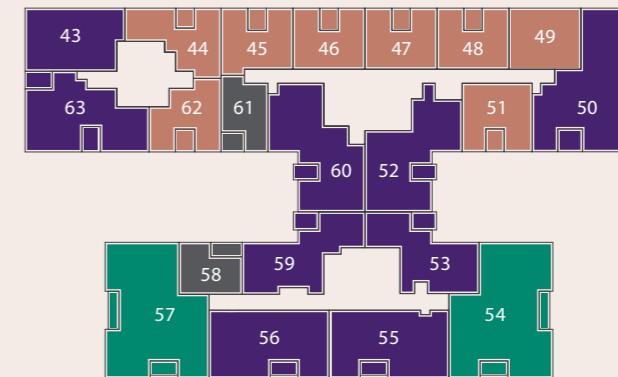


River Thames

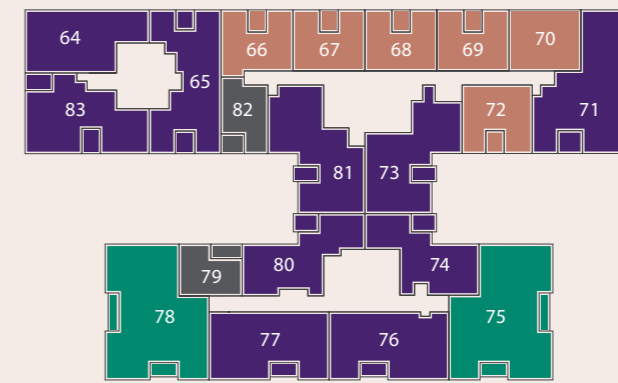
Floor 2



Floor 3



Floor 4



River Thames

12  
|  
13



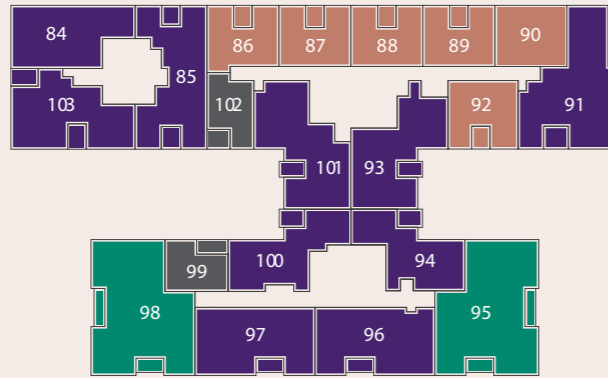
- One Bedroom Suite
- One Bedroom Apartment
- Two Bedroom Apartment
- Three Bedroom Apartment



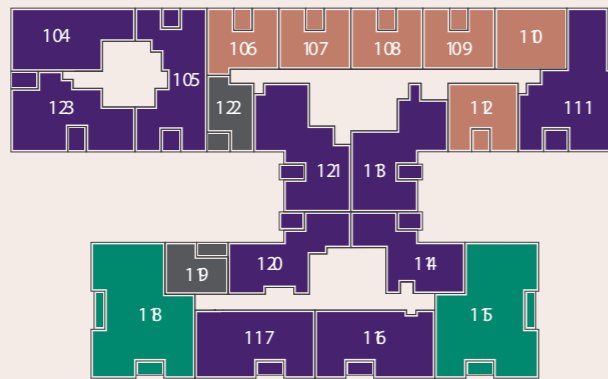


FLOORPLATES

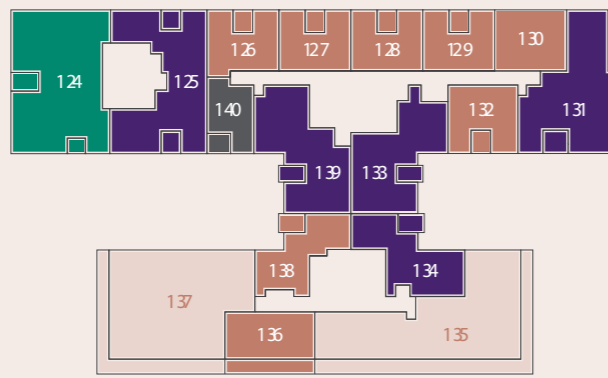
Floor5



Floor6

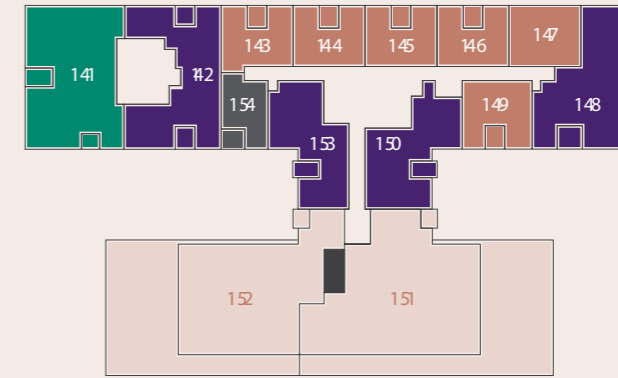


Floor7

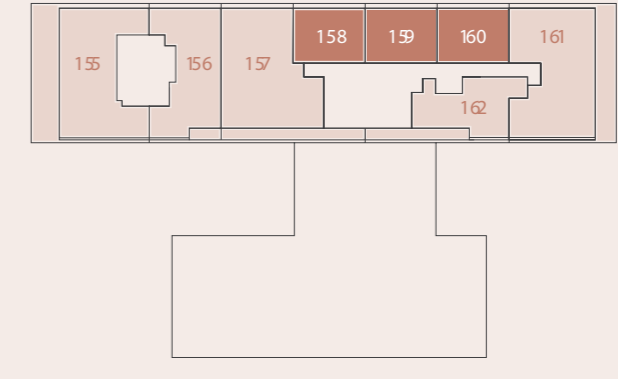


River Thames

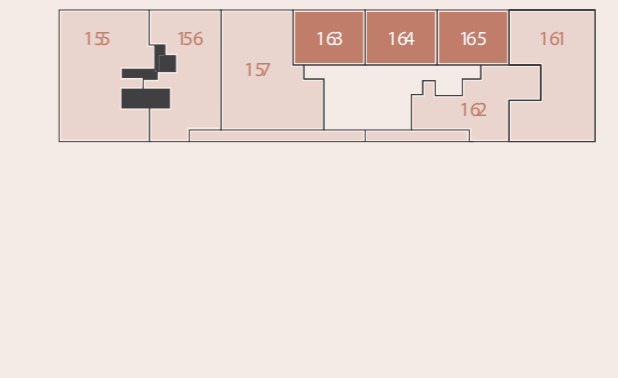
Floor8



Floor9



Floor 10



River Thames

14  
|  
15



- One Bedroom Suite
- One Bedroom Apartment
- Two Bedroom Apartment
- Three Bedroom Apartment
- Penthouse

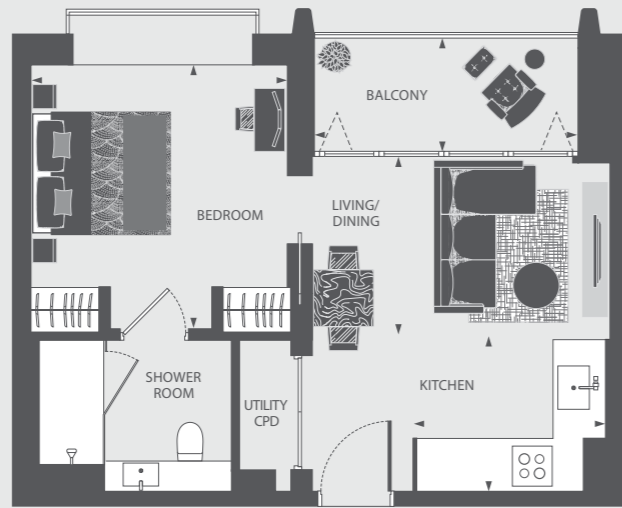




ONE BEDROOM  
SUITES

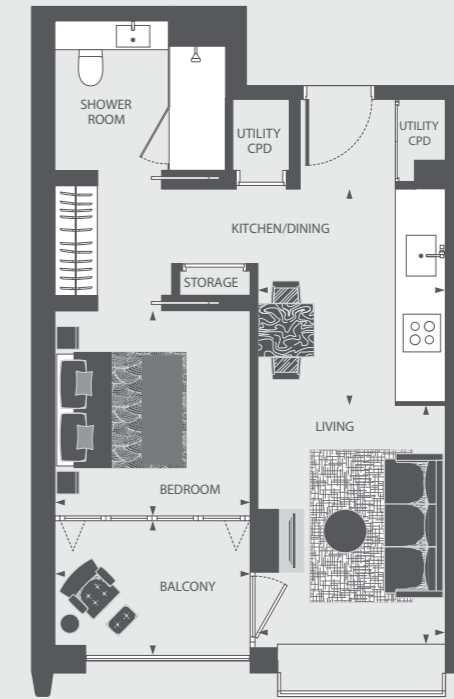
# ONE BEDROOM SUITE

APARTMENTS 16, 37, 58, 79, 99, 119



# ONE BEDROOM SUITE

APARTMENTS 19, 40, 61, 82, 102, 122, 140, 154



18  
|  
19



## DIMENSIONS

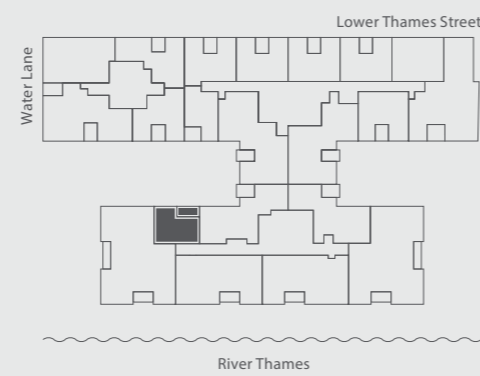
Living/Dining	3980 x 2693mm 13' 1" x 8' 10"
Kitchen	2404 x 1952mm 7' 11" x 6' 5"
Bedroom	3469 x 3340mm 11' 5" x 10' 11"
Shower Room	2492 x 2082mm 8' 2" x 6' 10"
Total	38.44 sq m 414 sq ft
Balcony	3467 x 1413mm 11' 4" x 4' 8"

## FLOOR

## APARTMENT

10	_____
9	_____
8	_____
7	_____
6	_____ 119
5	_____ 99
4	_____ 79
3	_____ 58
2	_____ 37
1	_____ 16
G	_____

## APARTMENT LOCATION



## DIMENSIONS

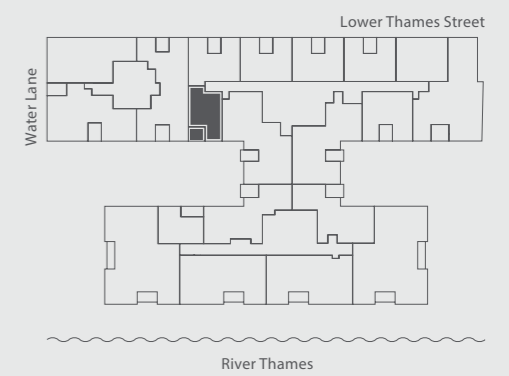
Living/Dining	3403 x 2644mm 11' 2" x 8' 8"
Kitchen	2964 x 2664mm 9' 9" x 8' 9"
Bedroom	2940 x 2715mm 9' 8" x 8' 11"
Shower Room	2485 x 2069mm 8' 2" x 6' 9"
Total	39.55 sq m 426 sq ft
Balcony Apt. 19, 61, 102, 140	2678 x 1922mm 8' 9" x 6' 4"
Balcony Apt. 40, 82, 122, 154	2678 x 2059mm 8' 9" x 6' 9"

## FLOOR

## APARTMENT

10	_____
9	_____
8	_____ 154
7	_____ 140
6	_____ 122
5	_____ 102
4	_____ 82
3	_____ 61
2	_____ 40
1	_____ 19
G	_____

## APARTMENT LOCATION

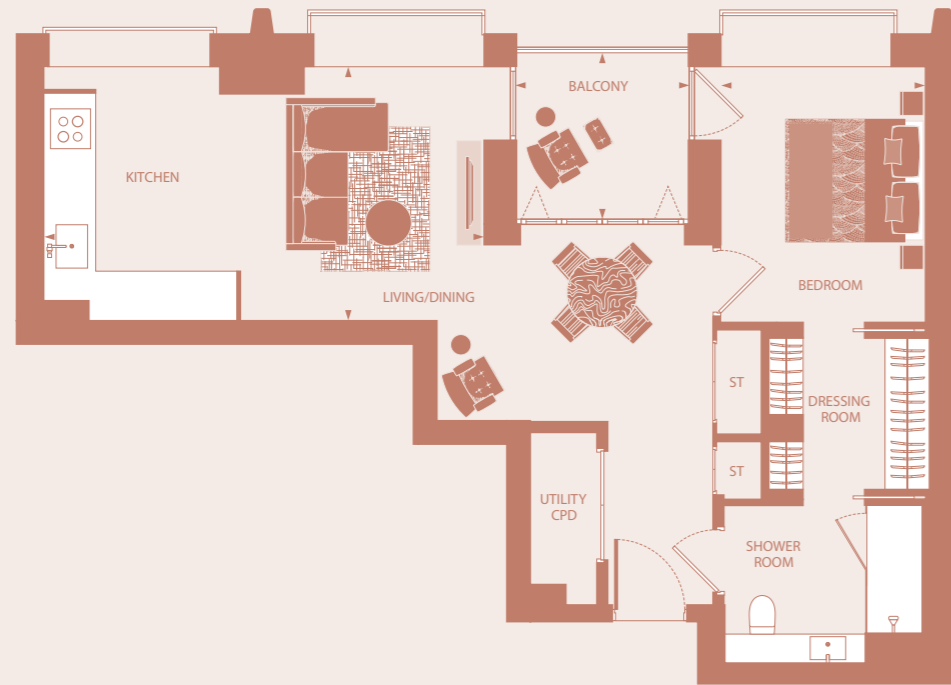




ONE BEDROOM  
APARTMENTS

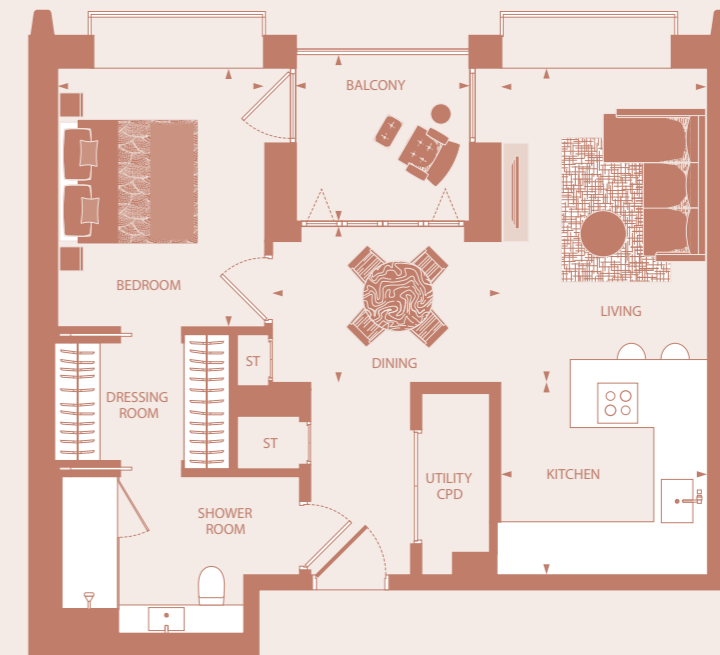
# ONE BEDROOM APARTMENT

APARTMENTS 2, 23, 44



# ONE BEDROOM APARTMENT

APARTMENTS 3, 24, 45, 66, 86, 106, 126, 143



22  
|  
23



## DIMENSIONS

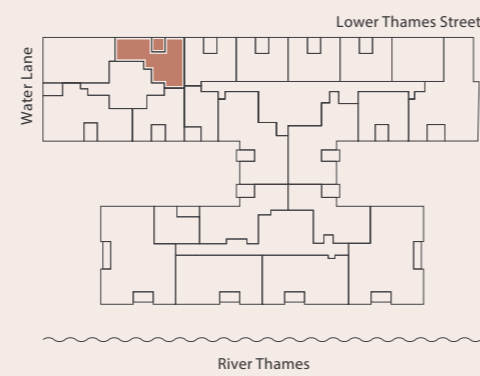
Living/Dining	3366 x 3228mm 11' 2" x 10' 7"
Kitchen	3406 x 2604mm 11' 2" x 8' 7"
Bedroom	3458 x 2732mm 11' 4" x 9' 0"
Dressing Room	2207 x 1910mm 7' 3" x 6' 3"
Shower Room	2767 x 2239mm 9' 1" x 7' 4"
Total	57.75 sq m    622 sq ft
BalconyApt. 2, 44	2400 x 2172mm 7' 10" x 7' 2"
BalconyApt. 23	2400 x 2309mm 7' 10" x 7' 7"

## FLOOR

10	_____
9	_____
8	_____
7	_____
6	_____
5	_____
4	_____
3	===== 44
2	===== 23
1	===== 2
G	_____

## APARTMENT

## APARTMENT LOCATION



## DIMENSIONS

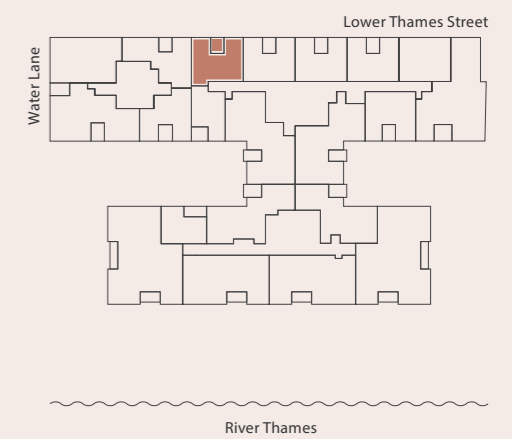
Living	4231 x 2702mm 13' 11" x 8' 10"
Dining	2892 x 2170mm 9' 6" x 7' 1"
Kitchen	2800 x 2645mm 9' 2" x 8' 8"
Bedroom	3475 x 2732mm 11' 5" x 9' 0"
Dressing Room	2488 x 1488mm 8' 2" x 4' 11"
Shower Room	3225 x 2252mm 10' 7" x 7' 5"
Total	54.97 sq m    592 sq ft
BalconyApt. 3, 45, 86, 126	2400 x 2172mm 7' 10" x 7' 2"
BalconyApt. 24, 66, 106, 143	2400 x 2309mm 7' 10" x 7' 7"

## FLOOR

10	_____
9	_____
8	_____
7	===== 143
6	===== 126
5	===== 106
4	===== 86
3	===== 66
2	===== 45
1	===== 24
G	===== 3

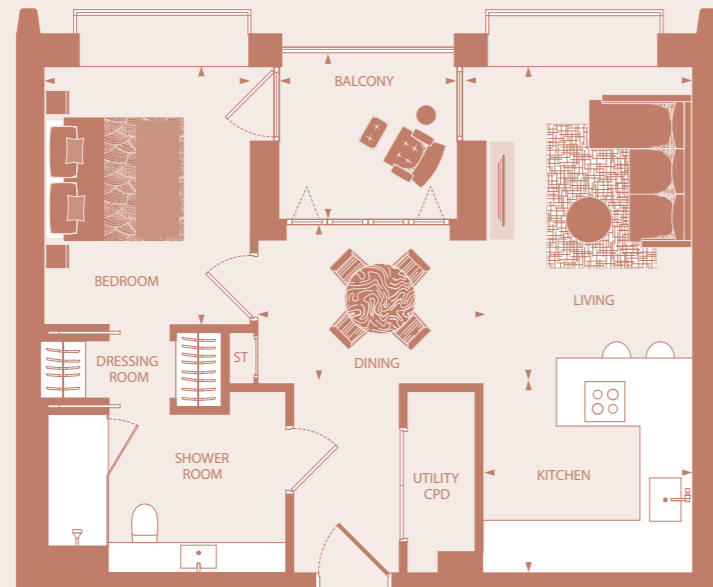
## APARTMENT

## APARTMENT LOCATION



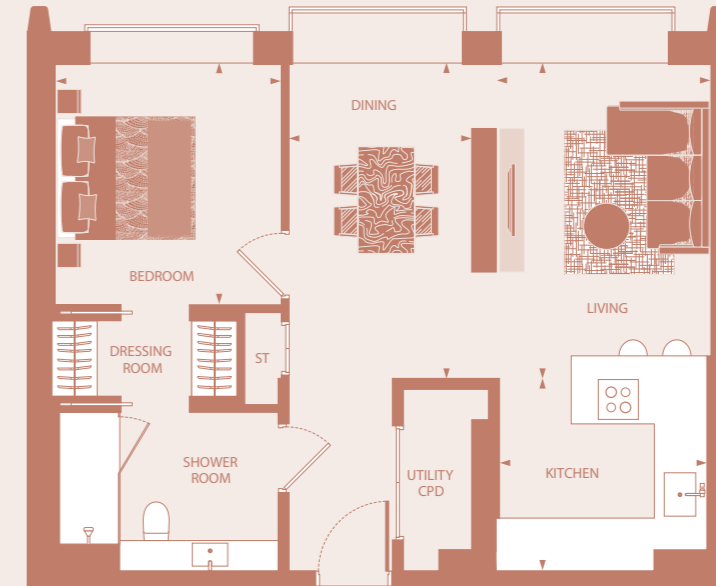
## ONE BEDROOM APARTMENT

APARTMENTS 4, 5, 6, 25, 26, 27, 46, 47, 48, 67, 68, 69  
87, 88, 89, 107, 108, 109, 127, 128, 129, 144, 145, 146



## ONE BEDROOM APARTMENT

APARTMENTS 7, 28, 49, 70, 90, 110, 130, 147



24  
|  
25



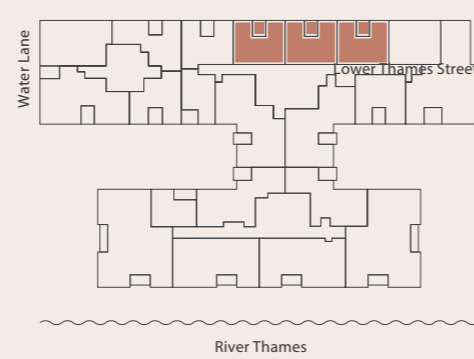
### DIMENSIONS

Living	4211 x 2712mm 13' 10" x 8' 11"
Dining	2883 x 2180mm 9' 5" x 7' 2"
Kitchen	2802 x 2645mm 8' 11" x 8' 8"
Bedroom	3405 x 2732mm 11' 2" x 9' 0"
Dressing Room	2435 x 888mm 8' 0" x 2' 11"
Shower Room	3255 x 2550mm 10' 8" x 8' 4"
Total	53.28 sq m 573 sq ft
Balcony	Apt. 4, 5, 6, 46, 47, 48, 2400 x 2172mm 7' 10" x 7' 2" 87, 88, 89, 127, 128, 129
Balcony	Apt. 25, 26, 27, 67, 68, 2400 x 2309mm 7' 10" x 7' 7" 69, 107, 108, 109, 144, 145, 146

### FLOOR

FLOOR	APARTMENT
10	
9	
8	144, 145, 146
7	127, 128, 129
6	107, 108, 109
5	87, 88, 89
4	67, 68, 69
3	46, 47, 48
2	25, 26, 27
1	4, 5, 6
G	

### APARTMENT LOCATION



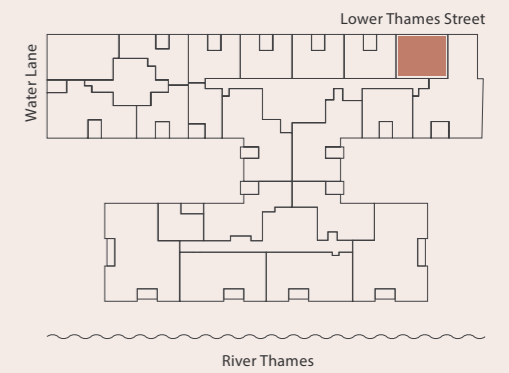
### DIMENSIONS

Living	4186 x 2762mm 13' 9" x 9' 1"
Dining	4186 x 2407mm 13' 9" x 7' 11"
Kitchen	2778 x 2520mm 9' 1" x 8' 3"
Bedroom	3216 x 2962mm 10' 7" x 9' 9"
Dressing Room	2495 x 1078mm 8' 2" x 3' 6"
Shower Room	2987 x 2238mm 9' 10" x 7' 4"
Total	59.07 sq m 636 sq ft

### FLOOR

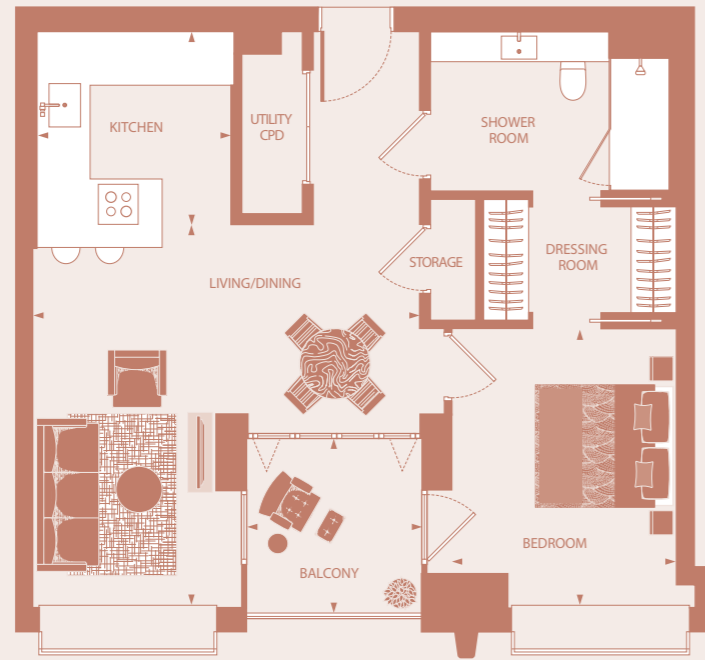
FLOOR	APARTMENT
10	
9	
8	147
7	130
6	110
5	90
4	70
3	49
2	28
1	7
G	

### APARTMENT LOCATION



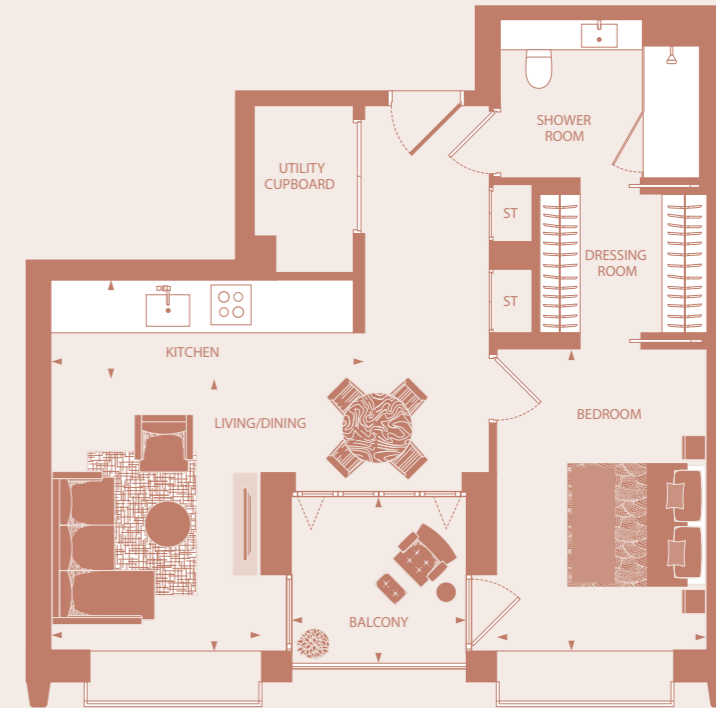
# ONE BEDROOM APARTMENT

APARTMENTS 9, 30, 51, 72, 92, 112, 132, 149



# ONE BEDROOM APARTMENT

APARTMENTS 20, 41, 62



## DIMENSIONS

Living/Dining	5094 x 5068mm 16' 9" x 16' 8"
Kitchen	2567 x 2555mm 8' 5" x 8' 5"
Bedroom	3637 x 2940mm 11' 11" x 9' 8"
Dressing Room	2544 x 1377mm 8' 4" x 4' 6"
Shower Room	3270 x 2274mm 10' 9" x 7' 6"
Total	58.17 sq m 626 sq ft
BalconyApt. 9, 51, 92, 132	2407 x 2274mm 7' 11" x 7' 6"
BalconyApt. 30, 72, 112, 149	2407 x 2411mm 7' 11" x 7' 11"

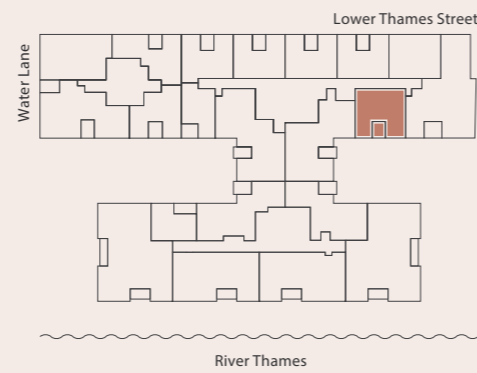
## FLOOR

10	_____
9	_____
8	_____
7	_____
6	_____
5	_____
4	_____
3	_____
2	_____
1	_____
G	_____

## APARTMENT

149  
132  
112  
92  
72  
51  
30  
9

## APARTMENT LOCATION



## DIMENSIONS

Living/Dining	3619 x 2732mm 11' 10" x 9' 0"
Kitchen	4174 x 1300mm 13' 8" x 4' 3"
Bedroom	4110 x 2732mm 13' 6" x 9' 0"
Dressing Room	2397 x 1688mm 7' 10" x 5' 6"
Shower Room	2996 x 2252mm 9' 10" x 7' 5"
Total	53.98 sq m 581 sq ft
BalconyApt. 20, 62	2400 x 2172mm 7' 10" x 7' 2"
BalconyApt. 41	2400 x 2309mm 7' 10" x 7' 7"

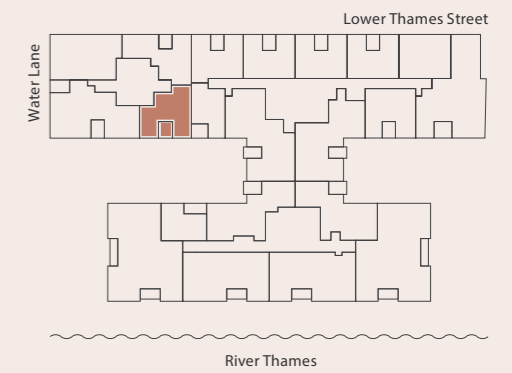
## FLOOR

10	_____
9	_____
8	_____
7	_____
6	_____
5	_____
4	_____
3	_____
2	_____
1	_____
G	_____

## APARTMENT

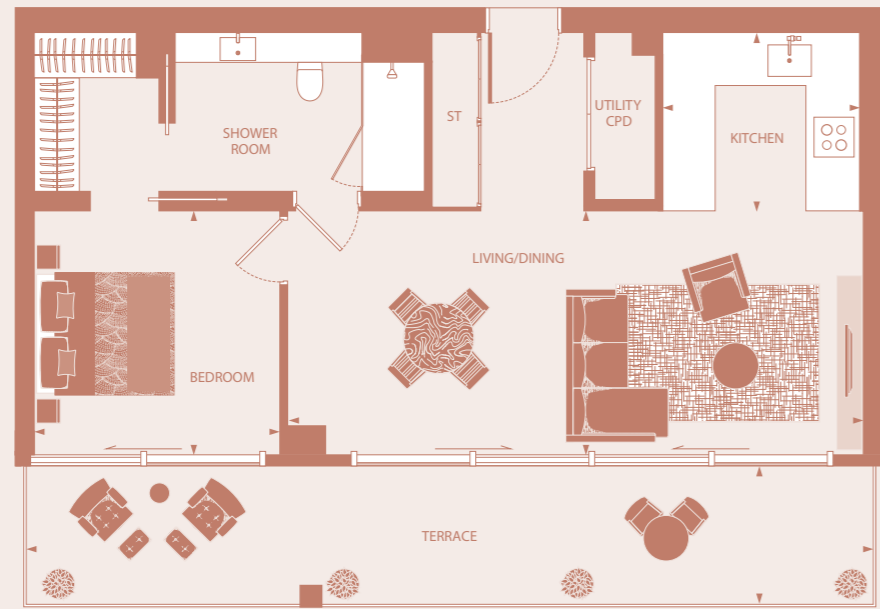
62  
41  
20

## APARTMENT LOCATION



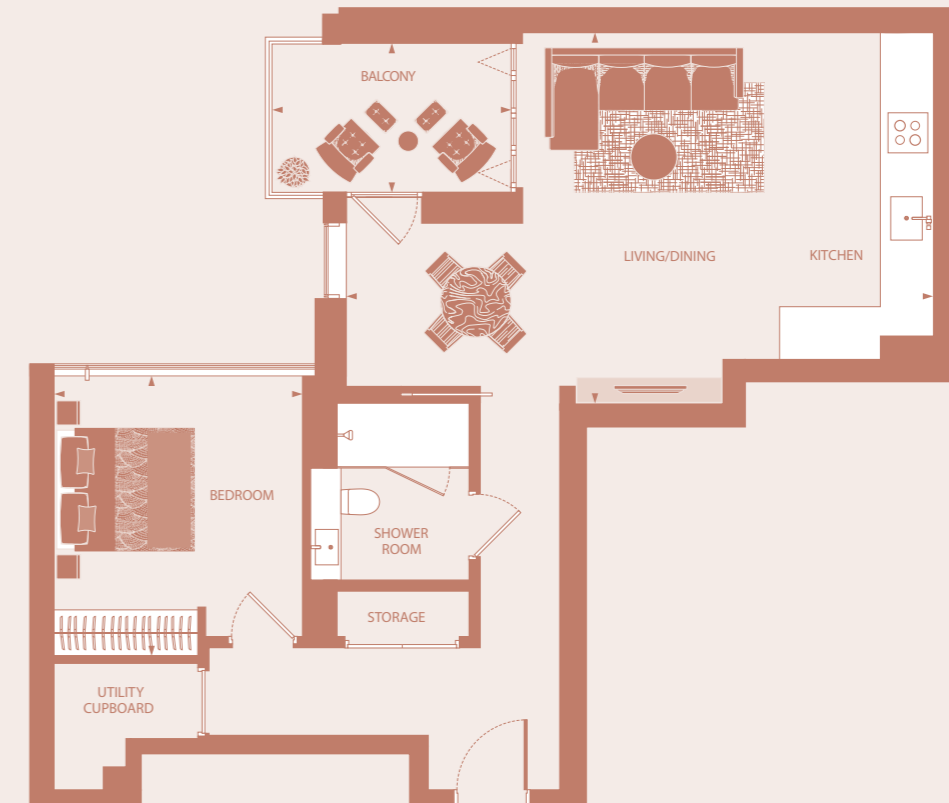
# ONE BEDROOM APARTMENT

APARTMENT 136



# ONE BEDROOM APARTMENT

APARTMENT 138



28  
|  
29



## DIMENSIONS

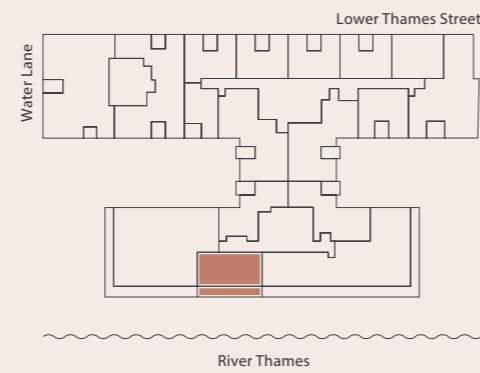
Living/Dining	7582 x 3254mm	24' 11" x 10' 8"
Kitchen	2674 x 2497mm	8' 9" x 8' 2"
Bedroom	3254 x 3220mm	10' 8" x 10' 7"
Dressing Room	2340 x 1783mm	7' 8" x 5' 10"
Shower Room	3186 x 2185mm	10' 5" x 7' 2"
Total	62.12 sq m	669 sq ft
Balcony	11250 x 2208mm	36' 11" x 7' 3"

## FLOOR

## APARTMENT



## APARTMENT LOCATION



## DIMENSIONS

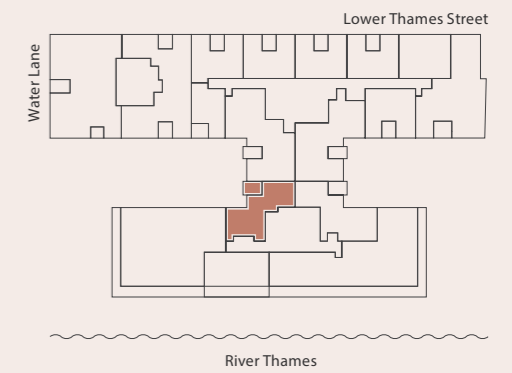
Living/Dining	5722 x 4941mm	18' 9" x 16' 3"
Kitchen	4357 x 1954mm	14' 4" x 6' 5"
Bedroom	3596 x 3202mm	11' 10" x 10' 6"
Shower Room	2513 x 2179mm	8' 3" x 7' 2"
Total	64.52 sq m	694 sq ft
Balcony	3224 x 1787mm	10' 7" x 5' 10"

## FLOOR

## APARTMENT



## APARTMENT LOCATION

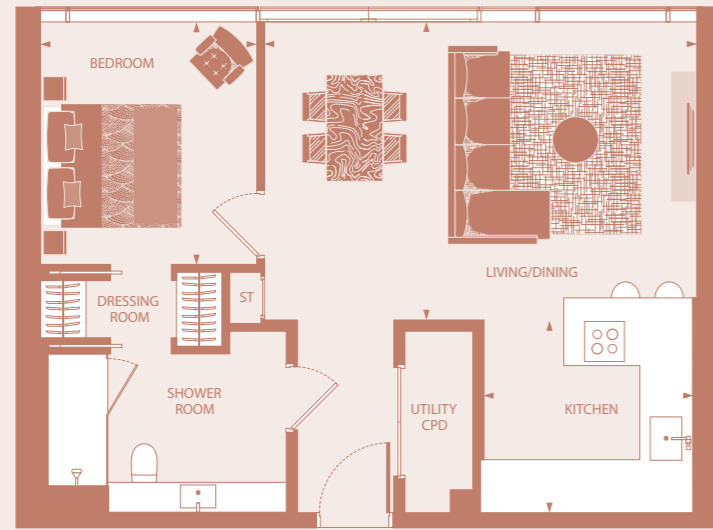




# ONE BEDROOM APARTMENT

APARTMENTS 158, 159, 160, 163, 164, 165

30  
|  
31



## DIMENSIONS

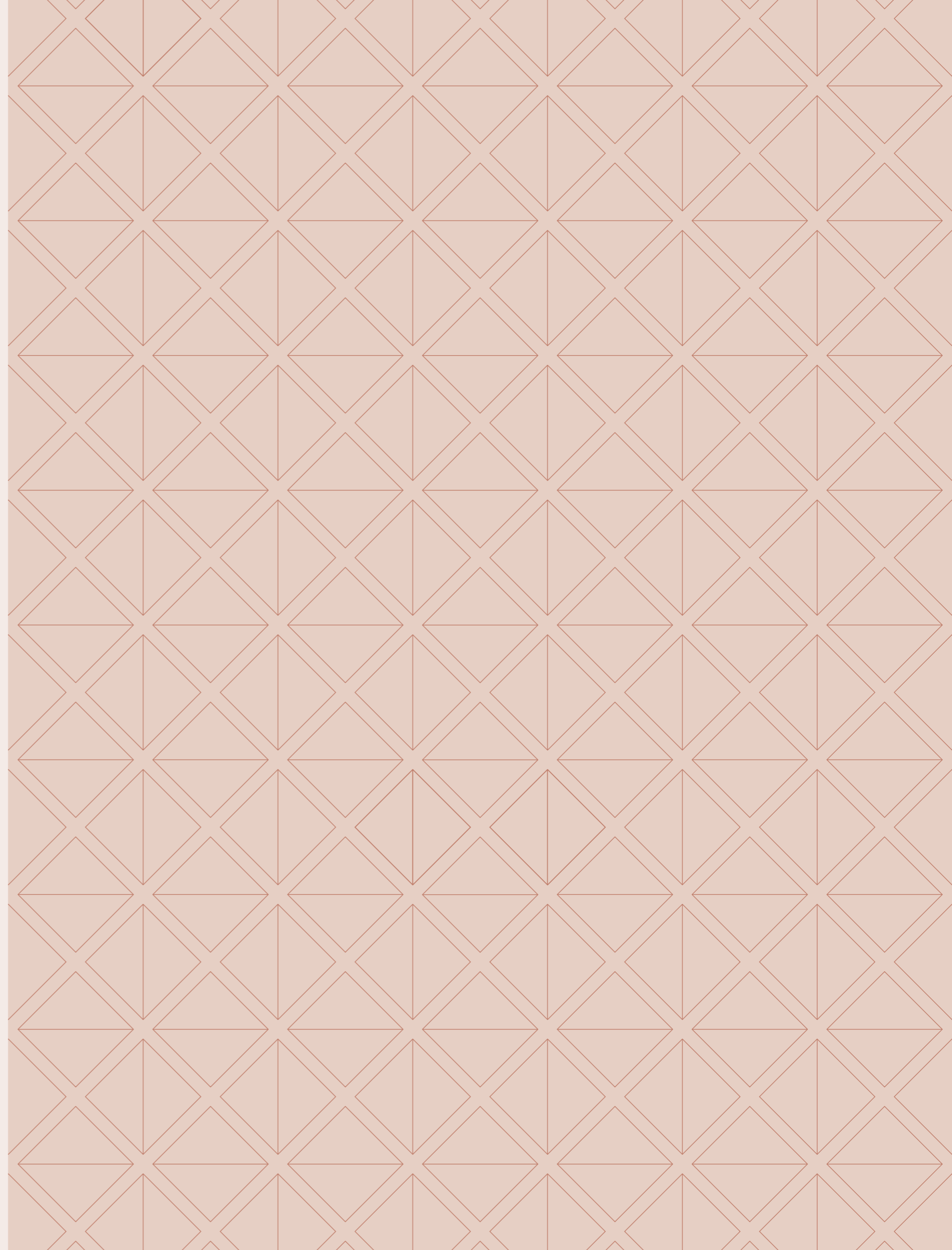
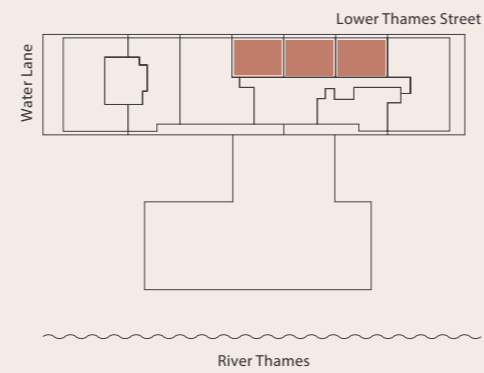
Living/Dining	5594 x 4056mm	18' 4" x 13' 4"
Kitchen	2800 x 2646mm	9' 2" x 8' 8"
Bedroom	3250 x 2879mm	10' 8" x 9' 5"
Dressing Room	2435 x 888mm	8' 0" x 2' 11"
Shower Room	3165 x 2252mm	10' 5" x 7' 5"
<b>Total</b>	<b>56.88 sq m</b>	<b>612 sq ft</b>

## FLOOR

## APARTMENT

10	163, 164, 165
9	158, 159, 160
8	
7	
6	
5	
4	
3	
2	
1	
G	

## APARTMENT LOCATION

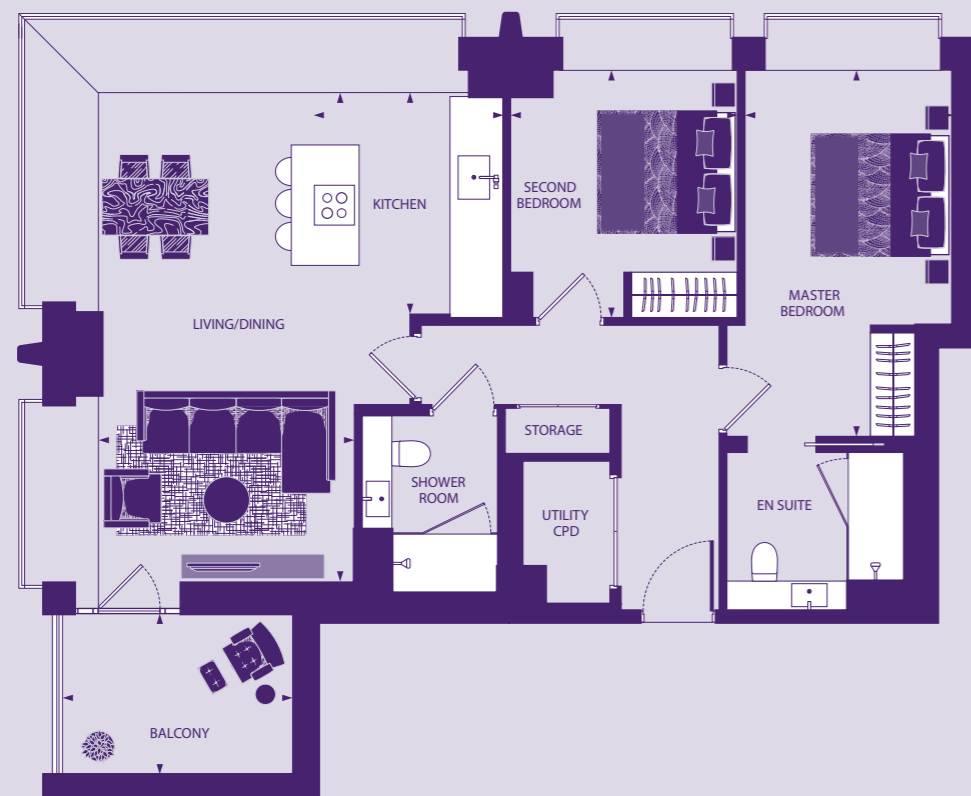




TWO BEDROOM  
APARTMENTS

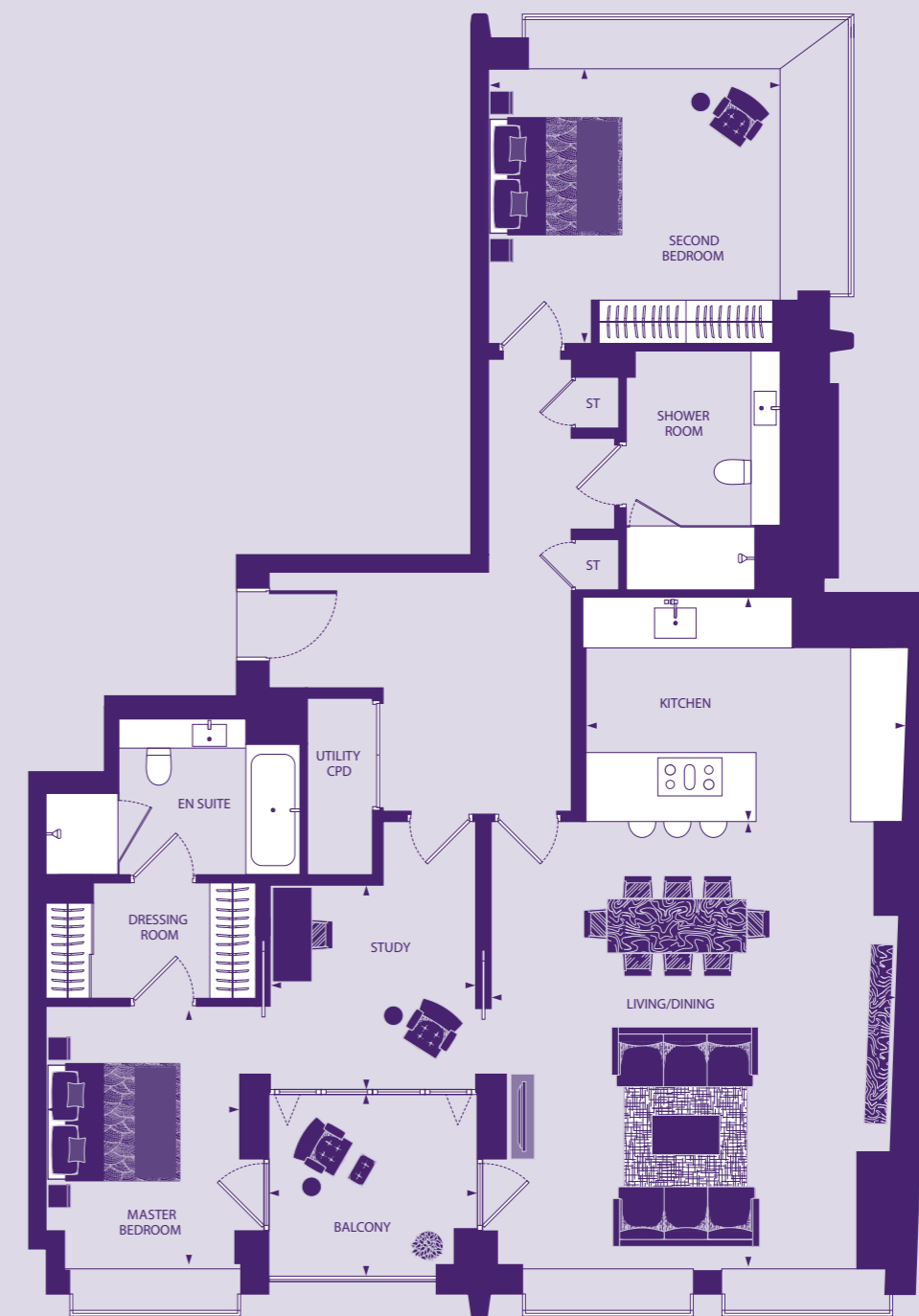
## TWO BEDROOM APARTMENT

APARTMENTS 1, 22, 43



## TWO BEDROOM APARTMENT

APARTMENTS 8, 29, 50, 71, 91, 111, 131, 148



### DIMENSIONS

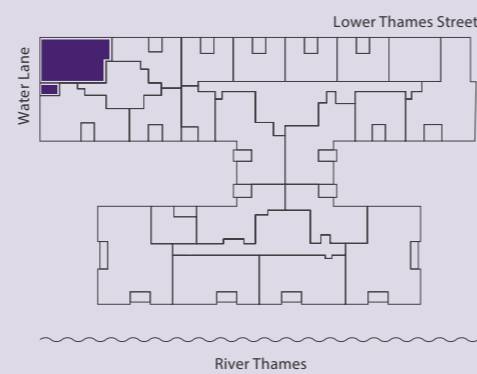
Living/Dining	6707 x 3335mm 22' 0" x 10' 11"
Kitchen	3252 x 2582mm 10' 8" x 8' 6"
Master Bedroom	4762 x 2751mm 15' 7" x 9' 0"
En suite	2484 x 2252mm 8' 2" x 7' 5"
Bedroom 2	3272 x 2970mm 10' 9" x 9' 9"
Shower Room	2510 x 1829mm 8' 3" x 6' 0"
Total	78.02 sq m 840 sq ft
Balcony Apt. 1, 43	2997 x 2180mm 9' 10" x 7' 2"
Balcony Apt. 22	3134 x 2180mm 10' 3" x 7' 2"

### FLOOR

10	_____
9	_____
8	_____
7	_____
6	_____
5	_____
4	_____
3	===== 43
2	===== 22
1	===== 1
G	_____

### APARTMENT

### APARTMENT LOCATION



### DIMENSIONS

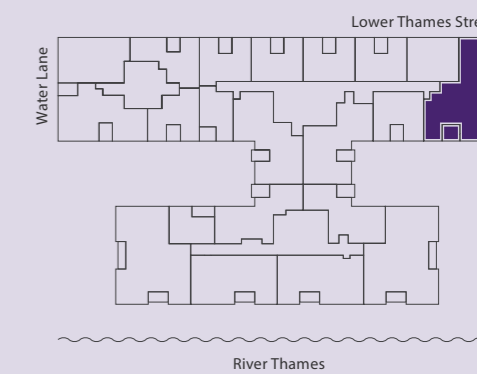
Living/Dining	6046 x 5574mm 19' 10" x 18' 3"
Kitchen	4401 x 3100mm 18' 3" x 10' 2"
Master Bedroom	3498 x 2921mm 11' 6" x 9' 7"
Dressing Room	2936 x 1554mm 9' 8" x 5' 1"
En suite	3485 x 2425mm 11' 5" x 7' 11"
Bedroom 2	3975 x 3950mm 13' 0" x 12' 11"
Study	2833 x 2798mm 9' 4" x 9' 2"
Shower Room	3203 x 2254mm 10' 6" x 7' 5"
Total	124 sq m 1338 sq ft
Balcony Apt. 8, 50, 91, 131	2742 x 2484mm 9' 0" x 8' 2"
Balcony Apt. 29, 71, 111, 148	2742 x 2621mm 9' 0" x 8' 7"

### FLOOR

10	_____
9	_____
8	===== 148
7	===== 131
6	===== 111
5	===== 91
4	===== 71
3	===== 50
2	===== 29
1	===== 8
G	_____

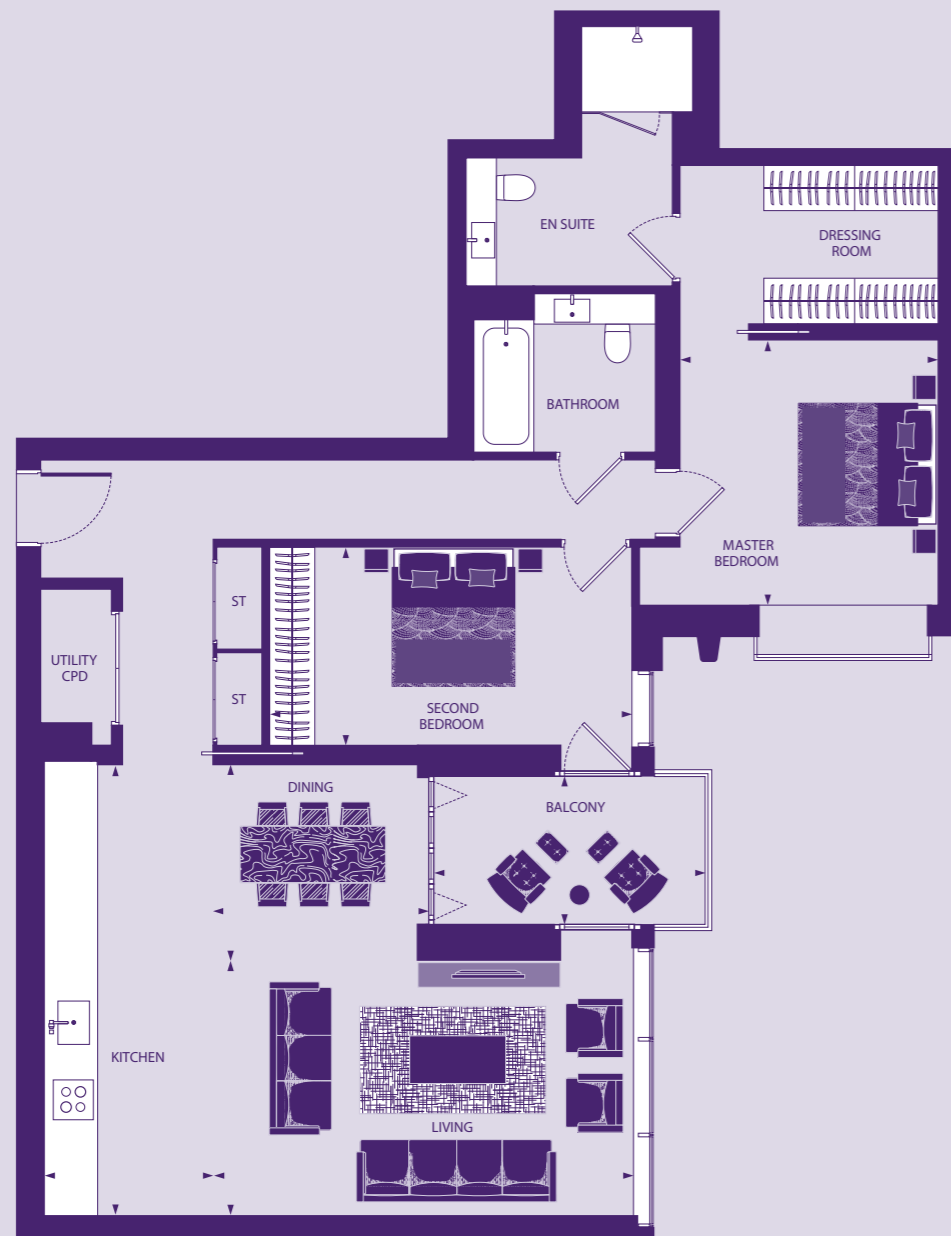
### APARTMENT

### APARTMENT LOCATION



## TWO BEDROOM APARTMENT

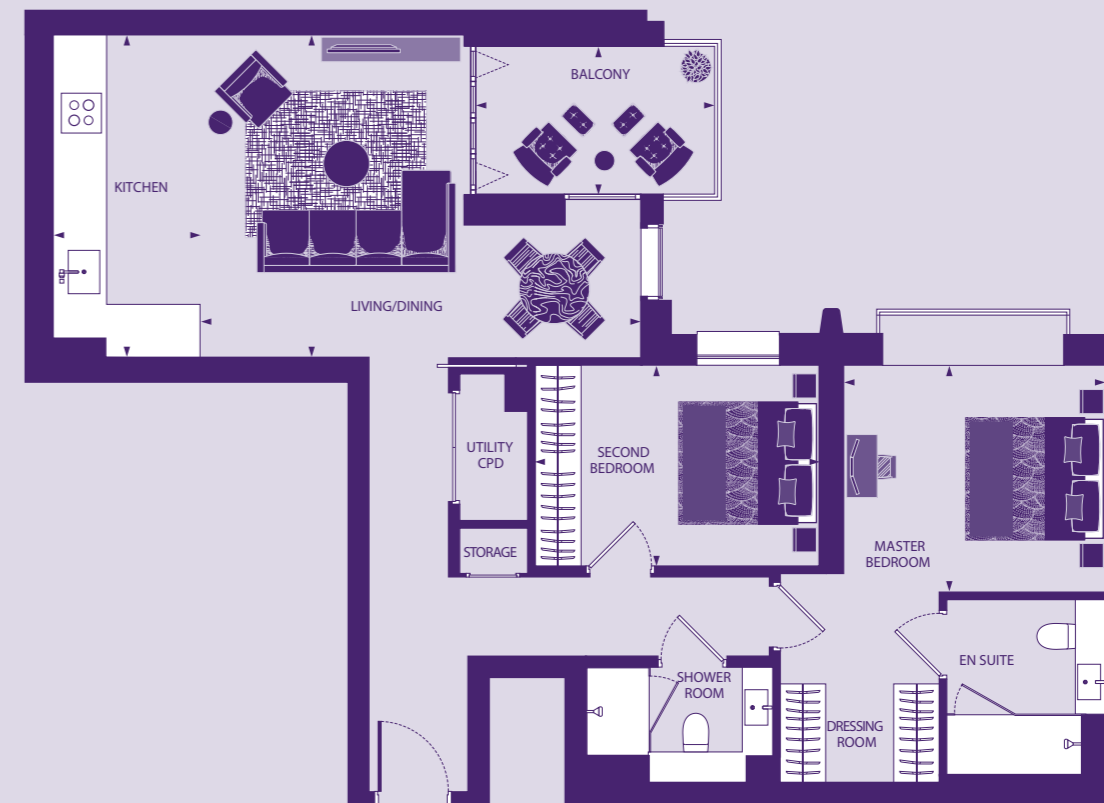
APARTMENT 10



36  
|  
37

## TWO BEDROOM APARTMENT

APARTMENT 11



### DIMENSIONS

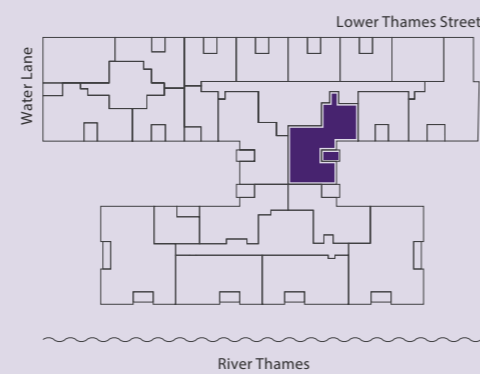
Living	5922 x 3304mm 19' 5" x 10' 10"
Dining	2941 x 2694mm 9' 8" x 8' 10"
Kitchen	5998 x 2089mm 19' 8" x 6' 10"
Master Bedroom	3446 x 3381mm 11' 4" x 11' 1"
Dressing Room	3396 x 2229mm 11' 2" x 7' 4"
En suite	3347 x 2766mm 11' 0" x 9' 1"
Bedroom 2	4754 x 2643mm 15' 7" x 8' 8"
Bathroom	2485 x 2235mm 8' 2" x 7' 4"
Total	105.84 sq m 1139 sq ft
Balcony	3656 x 1837mm 12' 0" x 6' 0"

### FLOOR



### APARTMENT

### APARTMENT LOCATION



### DIMENSIONS

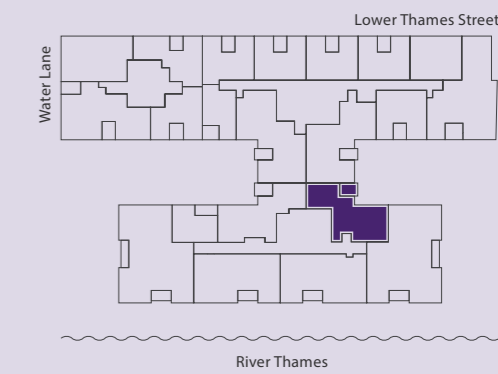
Living/Dining	5819 x 4342mm 19' 1" x 14' 3"
Kitchen	4357 x 1954mm 14' 4" x 6' 5"
Master Bedroom	3413 x 2958mm 11' 2" x 9' 8"
Dressing Room	2000 x 1308mm 6' 7" x 4' 3"
En suite	2563 x 2179mm 8' 5" x 7' 2"
Bedroom 2	3717 x 2645mm 12' 2" x 8' 8"
Shower Room	2398 x 1812mm 7' 10" x 5' 11"
Total	81.29 sq m 875 sq ft
Balcony	3221 x 1787mm 10' 7" x 5' 10"

### FLOOR



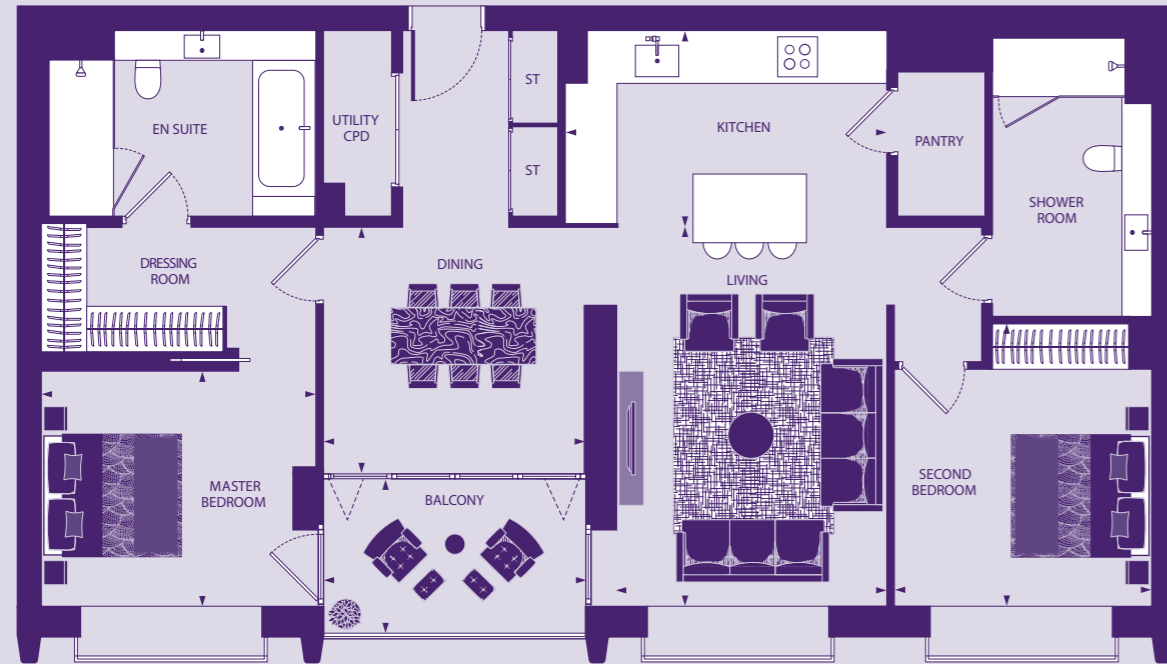
### APARTMENT

### APARTMENT LOCATION



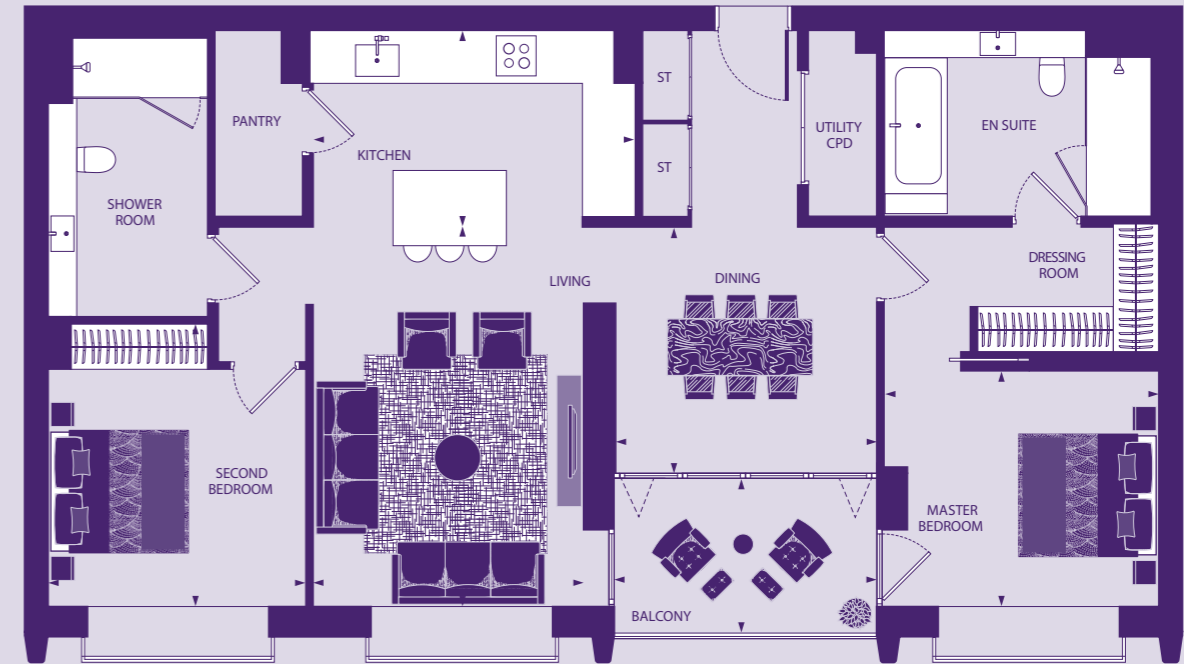
## TWO BEDROOM APARTMENT

APARTMENT 13



## TWO BEDROOM APARTMENT

APARTMENT 14



38  
|  
39



### DIMENSIONS

Living	5049 x 3493mm 16' 7" x 11' 6"
Dining	3402 x 3348mm 11' 2" x 11' 0"
Kitchen	4270 x 2712mm 14' 0" x 8' 11"
Master Bedroom	3592 x 3159mm 11' 9" x 10' 4"
Dressing Room	3613 x 1750mm 11' 10" x 5' 9"
En suite	3647 x 2603mm 12' 0" x 8' 6"
Bedroom 2	3798 x 3365mm 12' 6" x 11' 0"
Shower Room	3883 x 2085mm 12' 9" x 6' 10"
Total	105.82 sq m 1139 sq ft
Balcony	3568 x 1963mm 11' 8" x 6' 5"

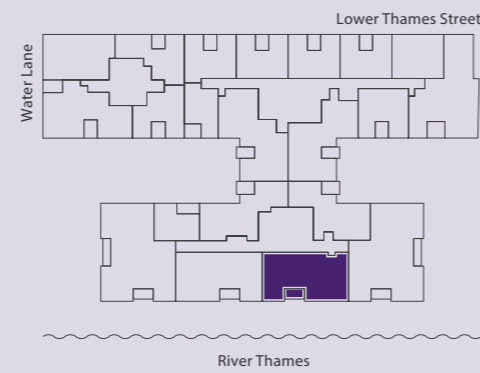
### FLOOR



### APARTMENT

13

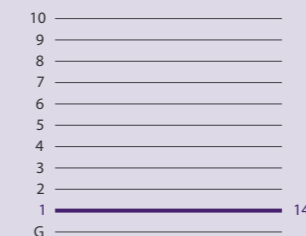
### APARTMENT LOCATION



### DIMENSIONS

Living	4954 x 3492mm 16' 3" x 11' 5"
Dining	3407 x 3253mm 11' 2" x 10' 8"
Kitchen	4270 x 2652mm 14' 0" x 8' 8"
Master Bedroom	3588 x 3159mm 11' 9" x 10' 4"
Dressing Room	3608 x 1750mm 11' 10" x 5' 9"
En suite	3647 x 2603mm 12' 0" x 8' 6"
Bedroom 2	3733 x 3364mm 12' 3" x 11' 0"
Shower Room	3948 x 2085mm 12' 11" x 6' 10"
Total	105.99 sq m 1141 sq ft
Balcony	3568 x 1963mm 11' 8" x 6' 5"

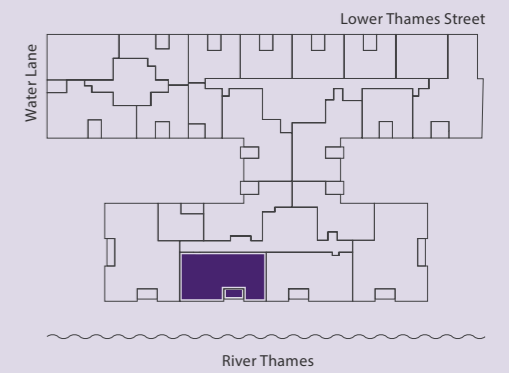
### FLOOR



### APARTMENT

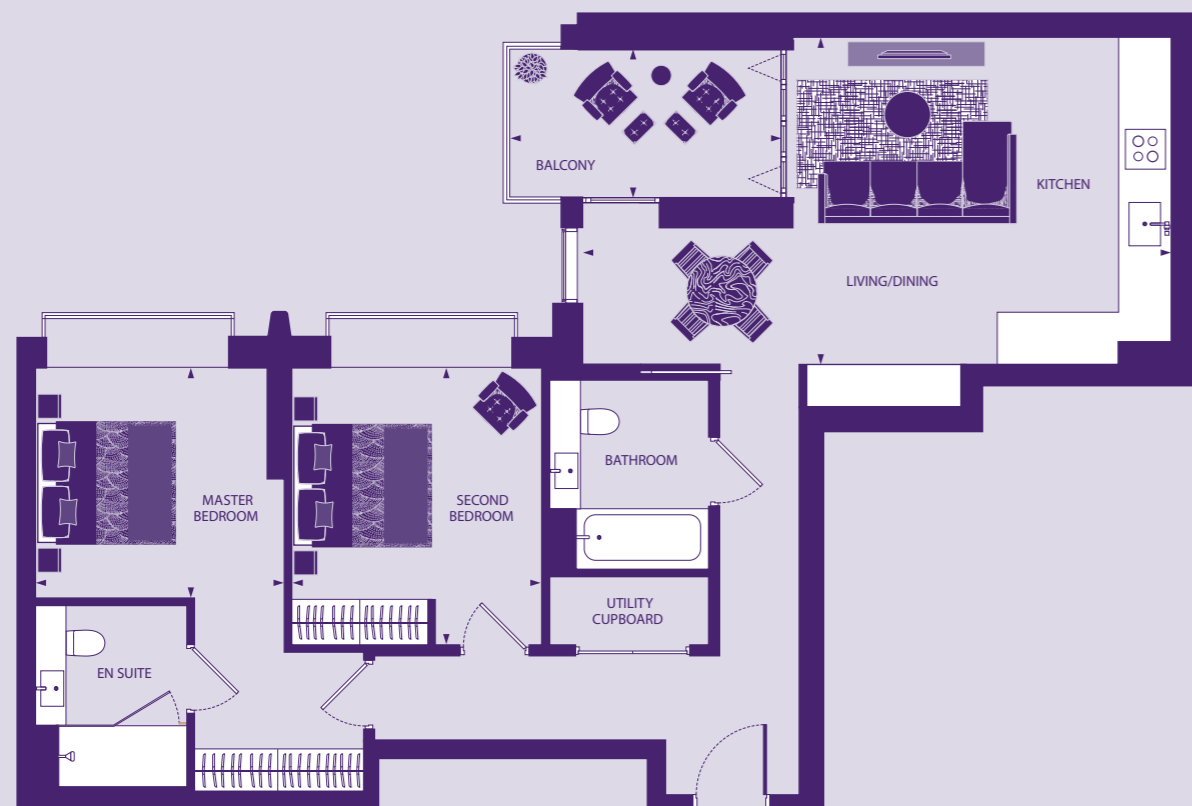
14

### APARTMENT LOCATION



## TWO BEDROOM APARTMENT

APARTMENT 17



### DIMENSIONS

Living/Dining	4941 x 3076mm 16' 3" x 10' 1"
Kitchen	4357 x 1954mm 14' 4" x 6' 5"
Master Bedroom	3257 x 3111mm 11' 10" x 10' 8"
En suite	2590 x 2035mm 8' 6" x 6' 8"
Bedroom 2	3601 x 3195mm 11' 10" x 10' 6"
Bathroom	2361 x 2130mm 7' 9" x 7' 0"
Total	84.07 sq m 905 sq ft
Balcony	3659 x 1787mm 12' 0" x 5' 10"

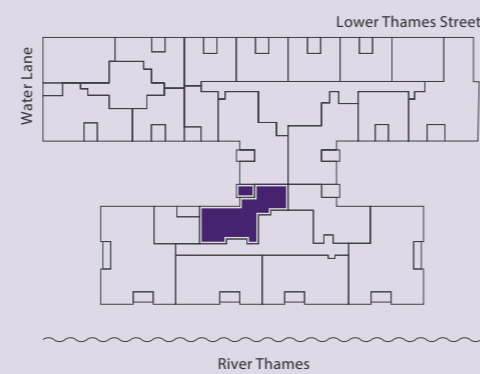
### FLOOR



### APARTMENT

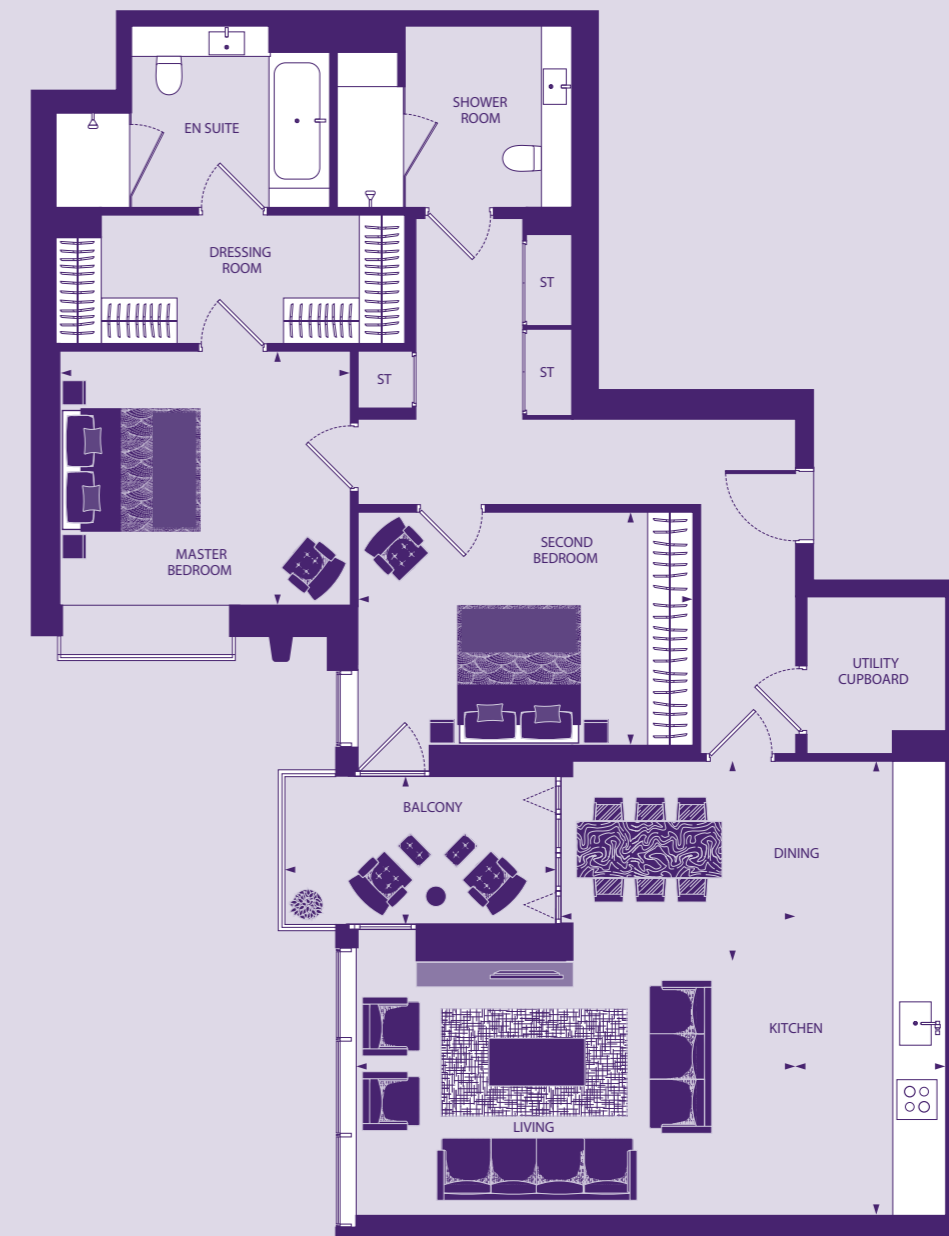
17

### APARTMENT LOCATION



## TWO BEDROOM APARTMENT

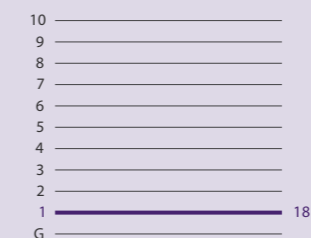
APARTMENT 18



### DIMENSIONS

Living	6066 x 3310mm 19' 11" x 10' 10"
Dining	3197 x 2691mm 10' 6" x 8' 10"
Kitchen	6001 x 1945mm 19' 8" x 6' 5"
Master Bedroom	3847 x 3366mm 12' 7" x 11' 1"
Dressing Room	4603 x 1685mm 15' 1" x 5' 6"
En suite	3395 x 2425mm 11' 2" x 7' 11"
Bedroom 2	4428 x 3124mm 14' 6" x 10' 3"
Shower Room	3212 x 2425mm 10' 6" x 7' 11"
Total	114.46 sq m 1232 sq ft
Balcony	3659 x 1787mm 12' 0" x 5' 10"

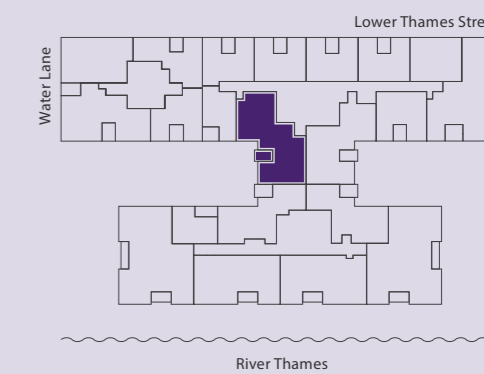
### FLOOR



### APARTMENT

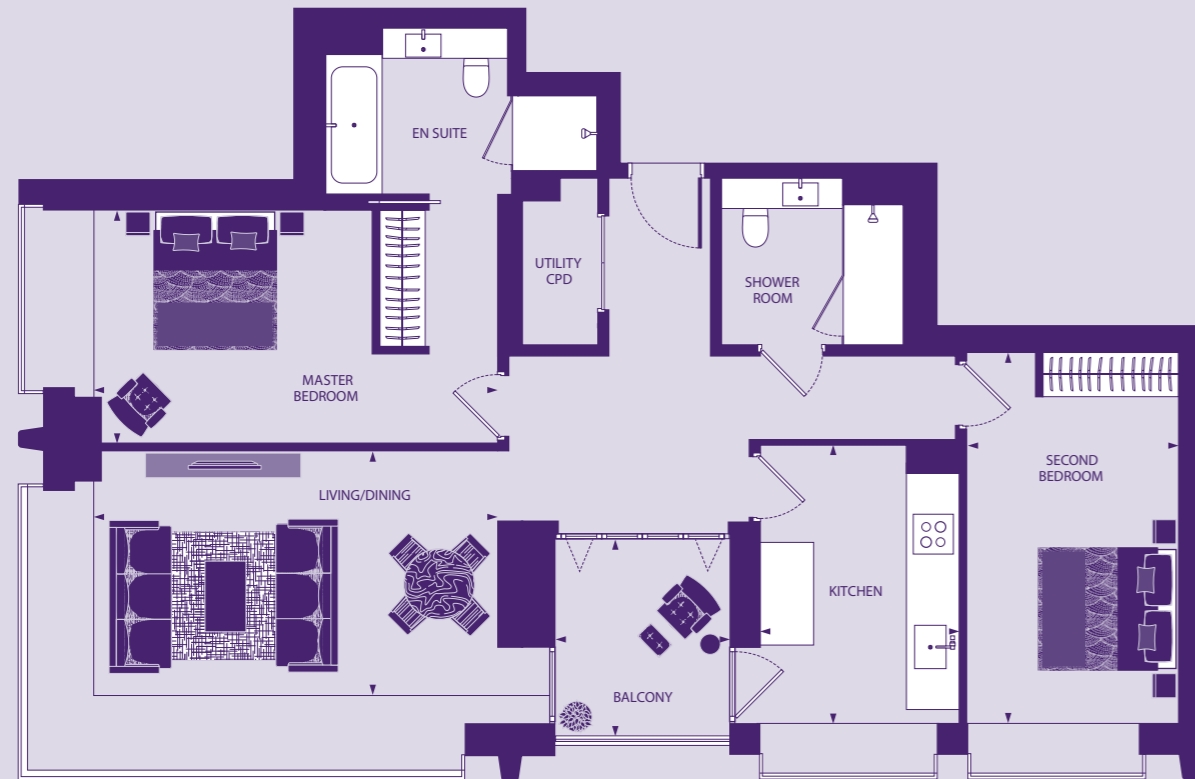
18

### APARTMENT LOCATION



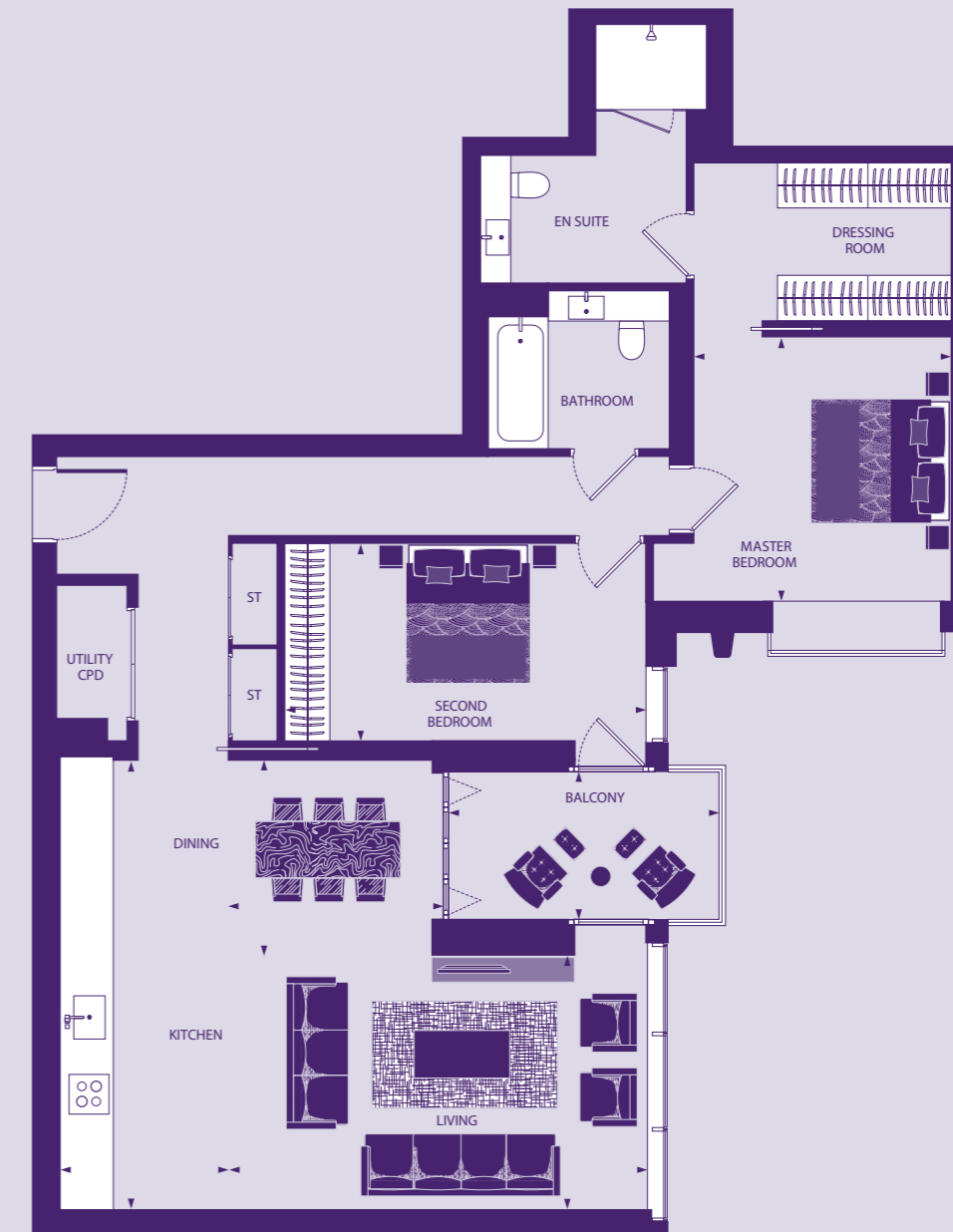
## TWO BEDROOM APARTMENT

APARTMENTS 21, 42, 63, 83, 103, 123



## TWO BEDROOM APARTMENT

APARTMENTS 31, 52, 73, 93, 113, 133, 150



42  
|  
43



### DIMENSIONS

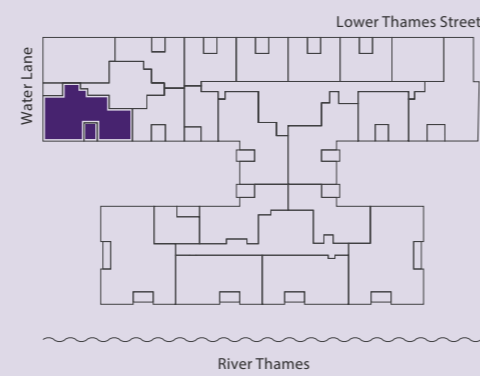
Living/Dining	5530 x 3601mm 18' 2" x 11' 10"
Kitchen	3705 x 2632mm 12' 2" x 8' 8"
Master Bedroom	5529 x 3172mm 18' 2" x 10' 5"
En suite	3798 x 2166mm 12' 6" x 7' 1"
Bedroom 2	4919 x 2764mm 16' 2" x 9' 1"
Shower Room	2484 x 2252mm 8' 2" x 7' 5"
Total	93.68 sq m 1008 sq ft
Balcony Apt. 21, 63, 103	2572 x 2408mm 8' 5" x 7' 11"
Balcony Apt. 42, 83, 123	2709 x 2408mm 8' 11" x 7' 11"

### FLOOR

10	_____
9	_____
8	_____
7	_____
6	_____ 123
5	_____ 103
4	_____ 83
3	_____ 63
2	_____ 42
1	_____ 21
G	_____

### APARTMENT

### APARTMENT LOCATION



### DIMENSIONS

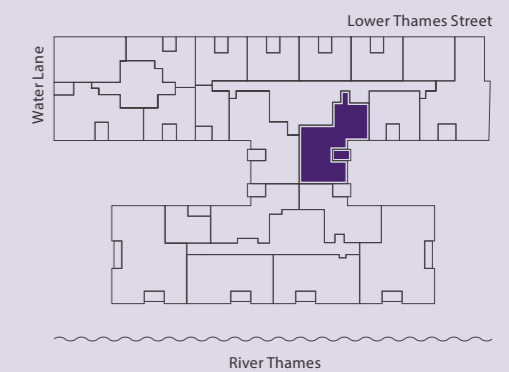
Living	5813 x 3304mm 19' 1" x 10' 10"
Dining	2947 x 2694mm 9' 8" x 8' 10"
Kitchen	5998 x 2232mm 19' 8" x 7' 4"
Master Bedroom	3446 x 3381mm 11' 4" x 11' 1"
En suite	3347 x 2766mm 11' 0" x 9' 1"
Dressing Room	3396 x 2229mm 11' 2" x 7' 4"
Bedroom 2	4754 x 2643mm 15' 7" x 8' 8"
Bathroom	2485 x 2278mm 8' 2" x 7' 6"
Total	106.08 sq m 1142 sq ft
Balcony	3656 x 1837mm 12' 0" x 6' 0"

### FLOOR

10	_____
9	_____
8	_____ 150
7	_____ 133
6	_____ 113
5	_____ 93
4	_____ 73
3	_____ 52
2	_____ 31
1	_____
G	_____

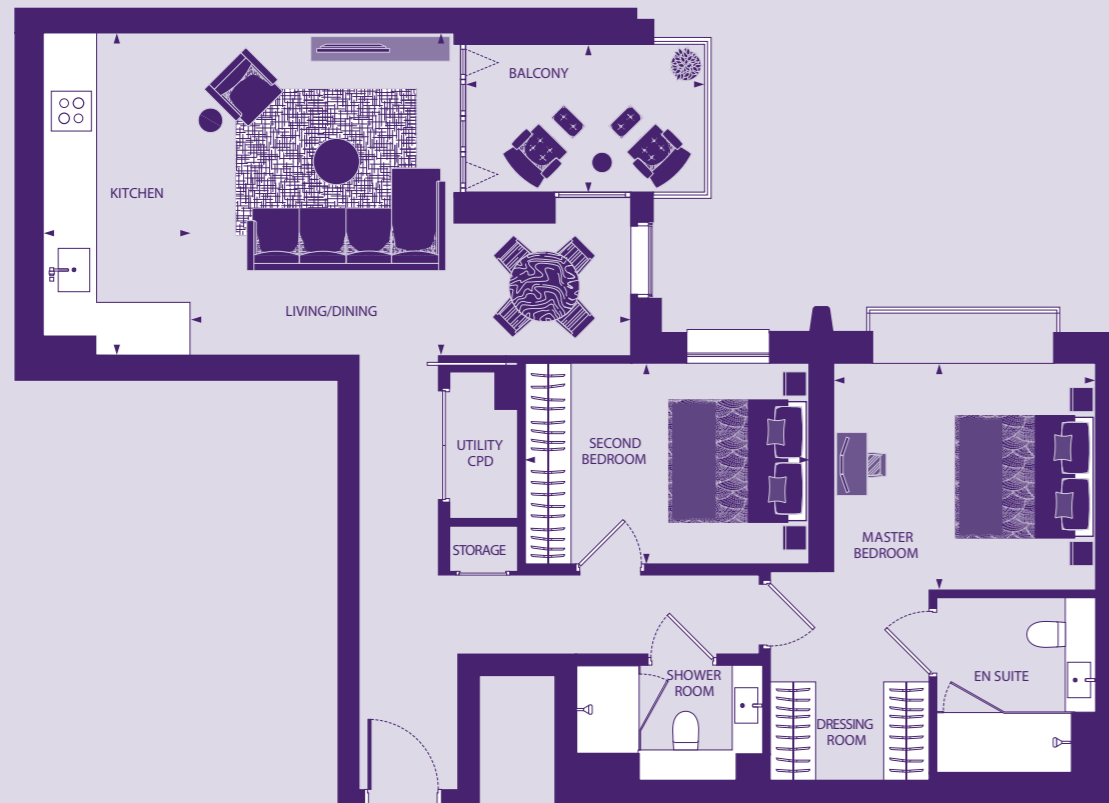
### APARTMENT

### APARTMENT LOCATION



## TWO BEDROOM APARTMENT

APARTMENTS 32, 53, 74, 94, 114



### DIMENSIONS

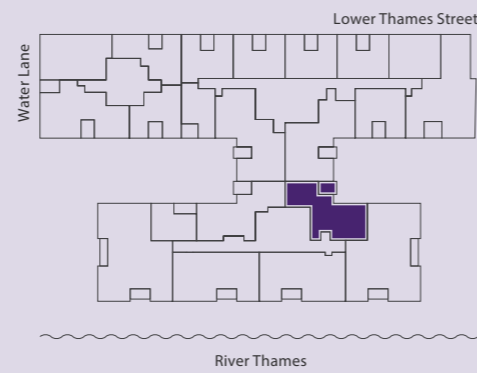
Living/Dining	5857 x 4343mm 19' 3" x 14' 3"
Kitchen	4343 x 1916mm 14' 3" x 6' 3"
Master Bedroom	3413 x 2958mm 11' 2" x 9' 8"
Dressing Room	2000 x 1288mm 6' 7" x 4' 3"
En suite	2563 x 2252mm 8' 5" x 7' 5"
Bedroom 2	3717 x 2645mm 12' 2" x 8' 8"
Shower Room	2398 x 1518mm 7' 10" x 5' 0"
Total	81.15 sq m 873 sq ft
Balcony	3221 x 1787mm 10' 7" x 5' 10"

### FLOOR

10	_____
9	_____
8	_____
7	_____
6	_____ 114
5	_____ 94
4	_____ 74
3	_____ 53
2	_____ 32
1	_____
G	_____

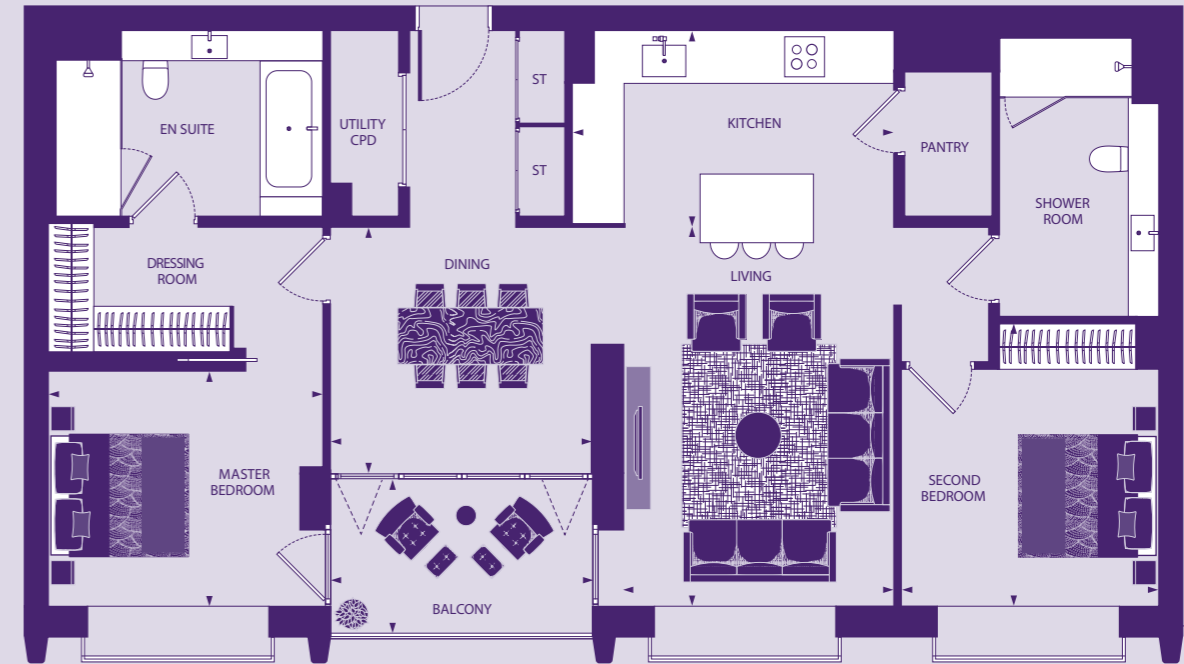
### APARTMENT

### APARTMENT LOCATION



## TWO BEDROOM APARTMENT

APARTMENTS 34, 55, 76, 96, 116



### DIMENSIONS

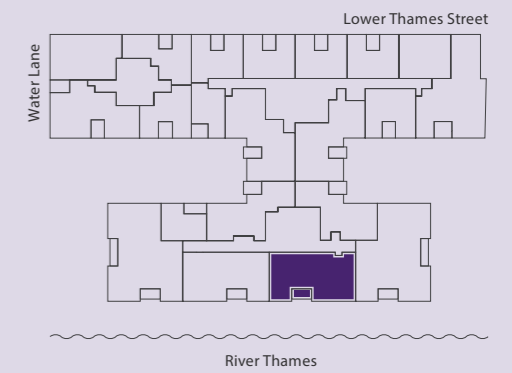
Living	5049 x 3522mm 16' 7" x 11' 7"
Dining	3402 x 3348mm 11' 2" x 11' 0"
Kitchen	4270 x 2712mm 14' 0" x 8' 11"
Master Bedroom	3592 x 3159mm 11' 9" x 10' 4"
Dressing Room	3665 x 1750mm 12' 0" x 5' 9"
En suite	3555 x 2603mm 11' 8" x 8' 6"
Bedroom 2	3798 x 3365mm 12' 6" x 11' 0"
Shower Room	3883 x 2085mm 12' 9" x 6' 10"
Total	105.93 sq m 1140 sq ft
Balcony	3568 x 1963mm 11' 8" x 6' 5"

### FLOOR

10	_____
9	_____
8	_____
7	_____
6	_____ 116
5	_____ 96
4	_____ 76
3	_____ 55
2	_____ 34
1	_____
G	_____

### APARTMENT

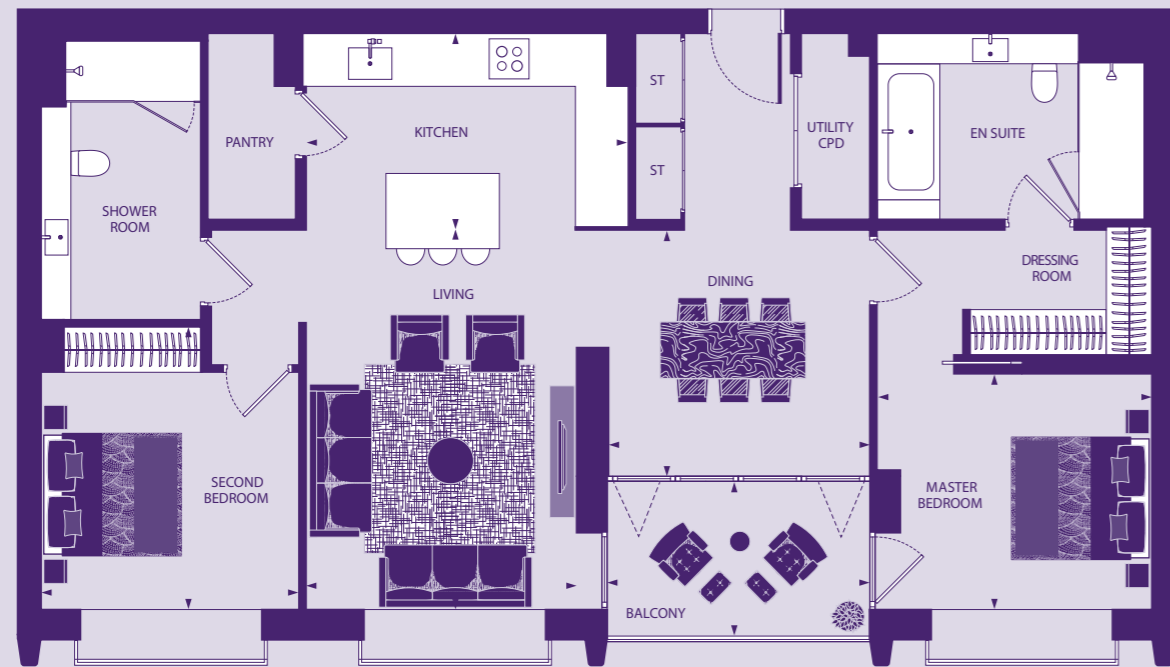
### APARTMENT LOCATION





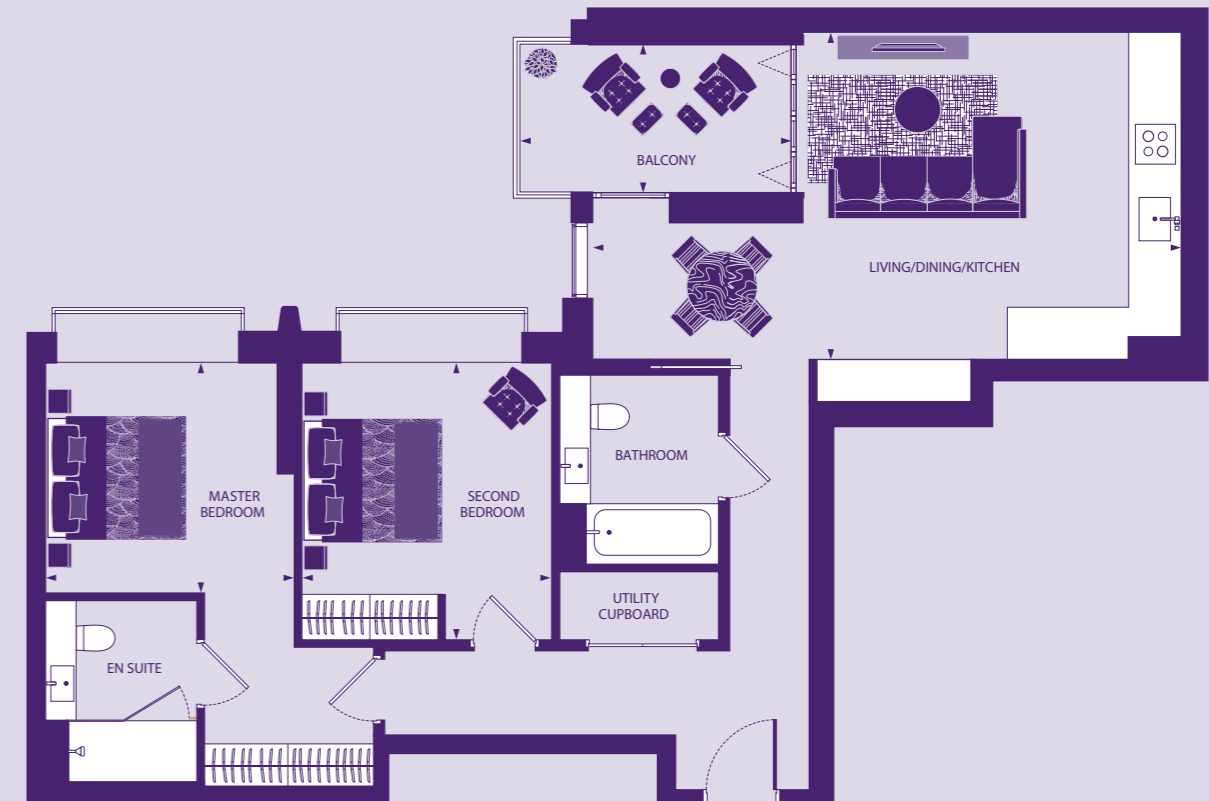
## TWO BEDROOM APARTMENT

APARTMENTS 35, 56, 77, 97, 117



## TWO BEDROOM APARTMENT

APARTMENTS 38, 59, 80, 100, 120



46  
|  
47

### DIMENSIONS

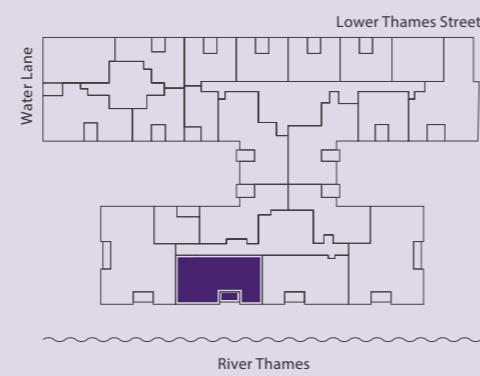
Living	4954 x 3523mm 16' 3" x 11' 7"
Dining	3407 x 3253mm 11' 2" x 10' 8"
Kitchen	4270 x 2652mm 14' 0" x 8' 8"
Master Bedroom	3588 x 3159mm 11' 9" x 10' 4"
Dressing Room	3661 x 1750mm 12' 0" x 5' 9"
En suite	3647 x 2603mm 12' 0" x 8' 6"
Bedroom 2	3733 x 3364mm 12' 3" x 11' 0"
Shower Room	3948 x 2085mm 12' 11" x 6' 10"
Total	106.09 sq m 1142 sq ft
Balcony	3568 x 1963mm 11' 8" x 6' 5"

### FLOOR

10	_____
9	_____
8	_____
7	_____
6	_____ 117
5	_____ 97
4	_____ 77
3	_____ 56
2	_____ 35
1	_____
G	_____

### APARTMENT

### APARTMENT LOCATION



### DIMENSIONS

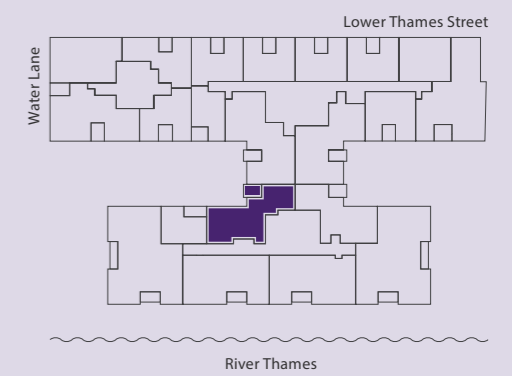
Living/Dining	5789 x 4357mm 19' 0" x 14' 4"
Kitchen	4357 x 2022mm 14' 4" x 6' 8"
Master Bedroom	3300 x 3111mm 10' 10" x 10' 2"
En suite	2590 x 2040mm 8' 6" x 6' 8"
Bedroom 2	3626 x 3193mm 11' 11" x 10' 6"
Bathroom	2361 x 2215mm 7' 9" x 7' 3"
Total	84.23 sq m 907 sq ft
Balcony	3659 x 1787mm 12' 0" x 5' 10"

### FLOOR

10	_____
9	_____
8	_____
7	_____
6	_____ 120
5	_____ 100
4	_____ 80
3	_____ 59
2	_____ 38
1	_____
G	_____

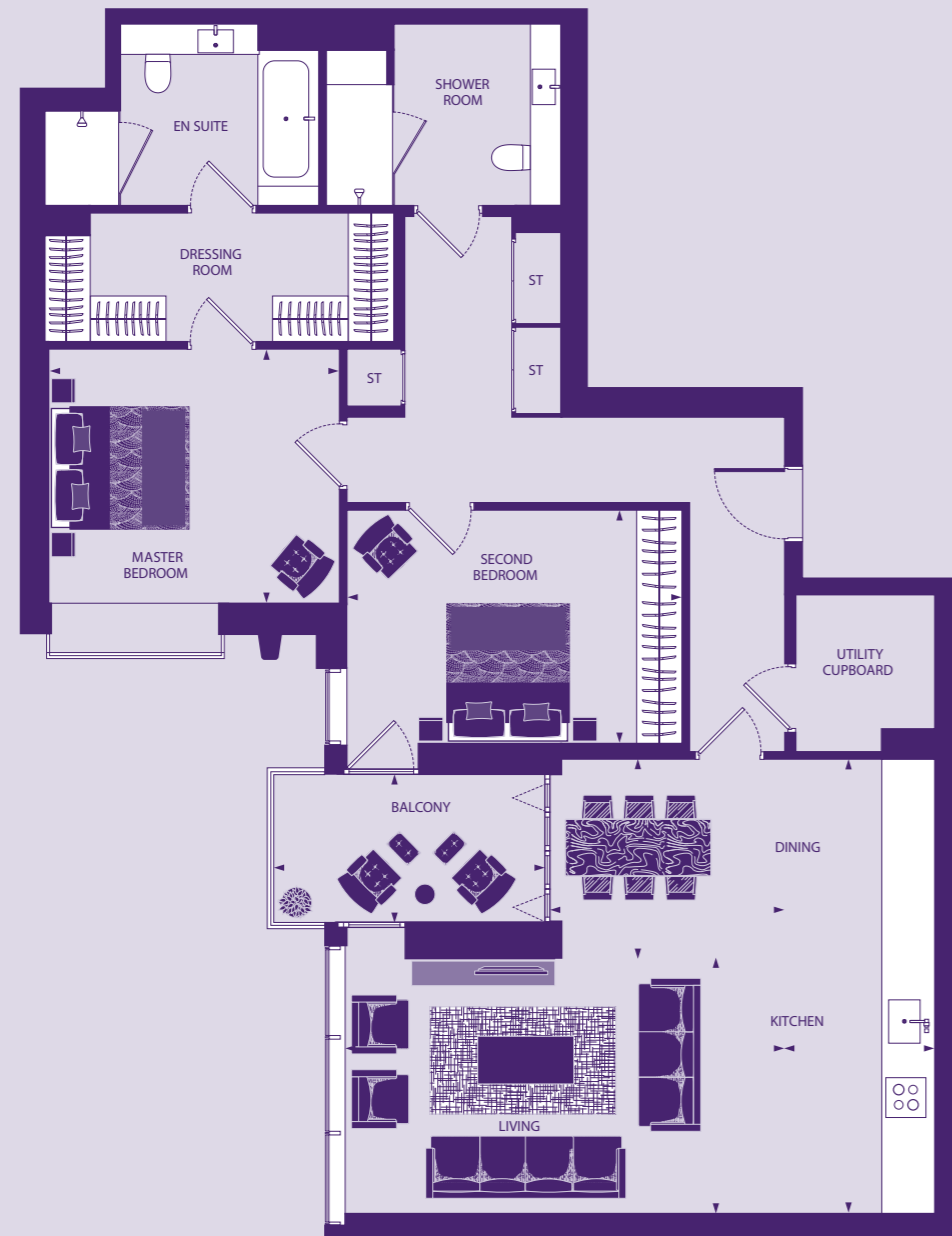
### APARTMENT

### APARTMENT LOCATION



## TWO BEDROOM APARTMENT

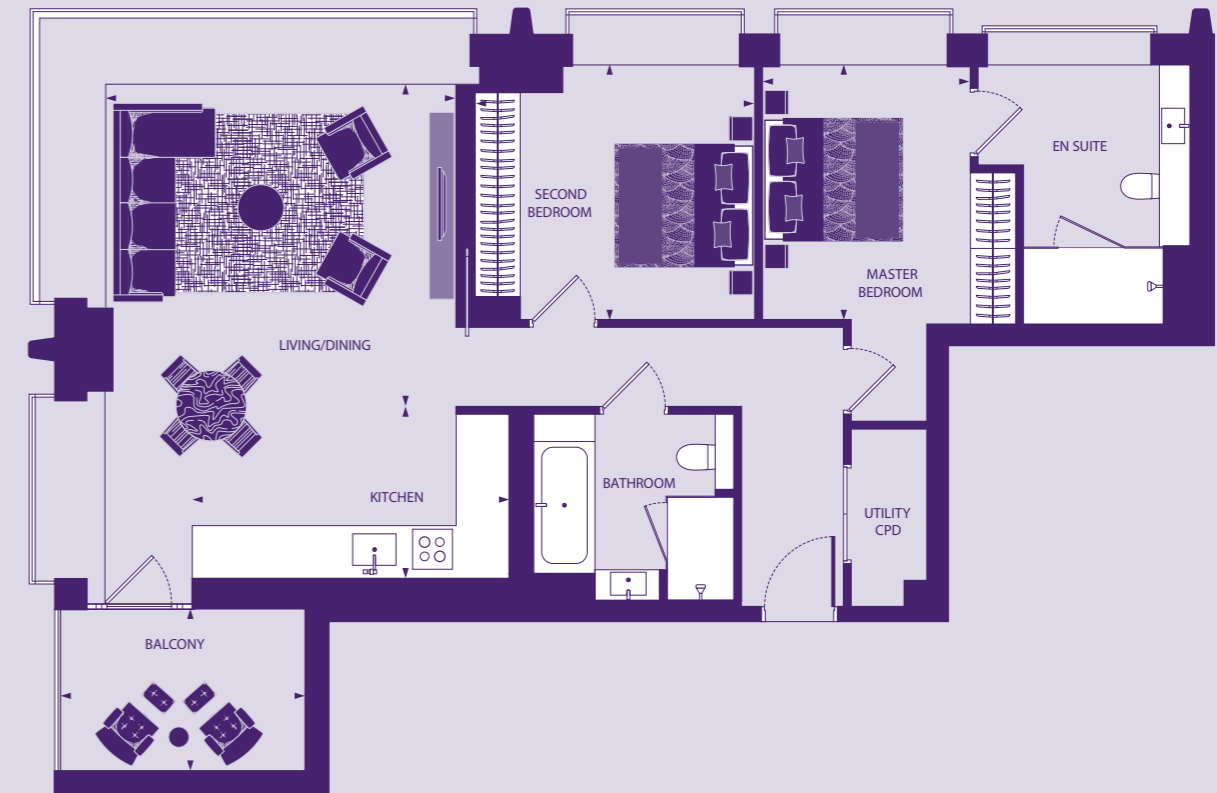
APARTMENTS 39, 60, 81, 101, 121, 139



48  
|  
49

## TWO BEDROOM APARTMENT

APARTMENTS 64, 84, 104



### DIMENSIONS

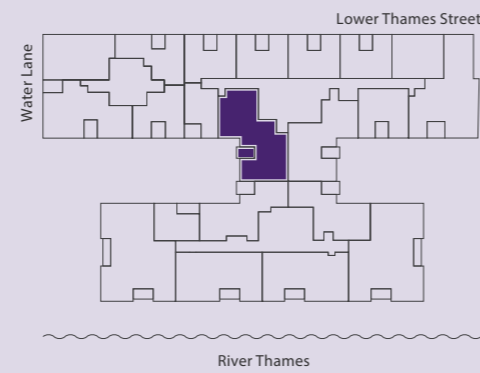
Living	6066 x 3295mm 19' 11" x 10' 10"
Dining	3086 x 2704mm 10' 1" x 8' 10"
Kitchen	6082 x 1982mm 19' 11" x 6' 6"
Master Bedroom	3847 x 3366mm 12' 7" x 11' 1"
Dressing Room	4618 x 1685mm 15' 2" x 5' 6"
En suite	3395 x 2425mm 11' 2" x 7' 11"
Bedroom 2	4420 x 3179mm 14' 6" x 10' 5"
Shower Room	3212 x 2425mm 10' 6" x 7' 11"
Total	114.79 sq m 1236 sq ft
Balcony	3659 x 1837mm 12' 0" x 6' 0"

### FLOOR

10	_____
9	_____
8	_____
7	_____
6	_____ 139
5	_____ 121
4	_____ 101
3	_____ 81
2	_____ 60
1	_____ 39
G	_____

### APARTMENT

### APARTMENT LOCATION



### DIMENSIONS

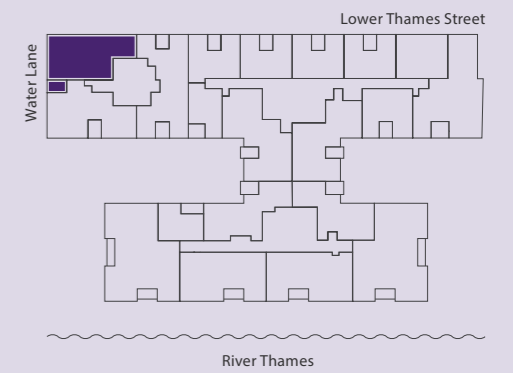
Living/Dining	4795 x 4609mm 15' 9" x 15' 1"
Kitchen	4222 x 1954mm 13' 10" x 6' 5"
Master Bedroom	3430 x 3386mm 11' 3" x 11' 1"
En suite	3406 x 2110mm 11' 2" x 6' 11"
Bedroom 2	3745 x 3386mm 12' 3" x 11' 1"
Bathroom	2626 x 2473mm 8' 7" x 8' 1"
Total	87.97 sq m 947 sq ft
Balcony Apt. 64, 84	3134 x 2180mm 10' 3" x 7' 2"
Balcony Apt. 104	3162 x 2210mm 10' 4" x 7' 3"

### FLOOR

10	_____
9	_____
8	_____
7	_____
6	_____ 104
5	_____ 84
4	_____ 64
3	_____
2	_____
1	_____
G	_____

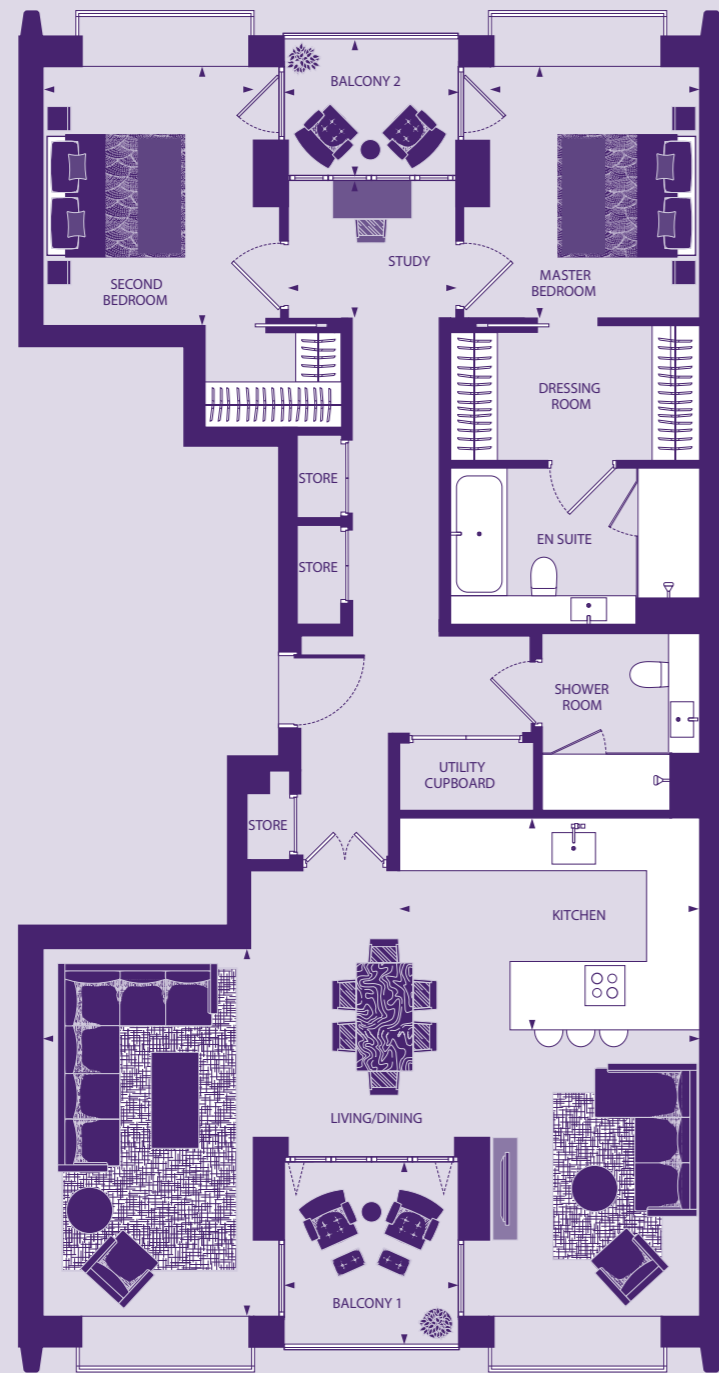
### APARTMENT

### APARTMENT LOCATION



## TWO BEDROOM APARTMENT

APARTMENTS 65, 85, 105



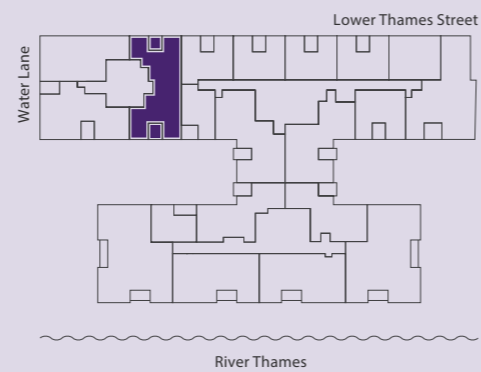
FLOOR

APARTMENT

APARTMENT LOCATION

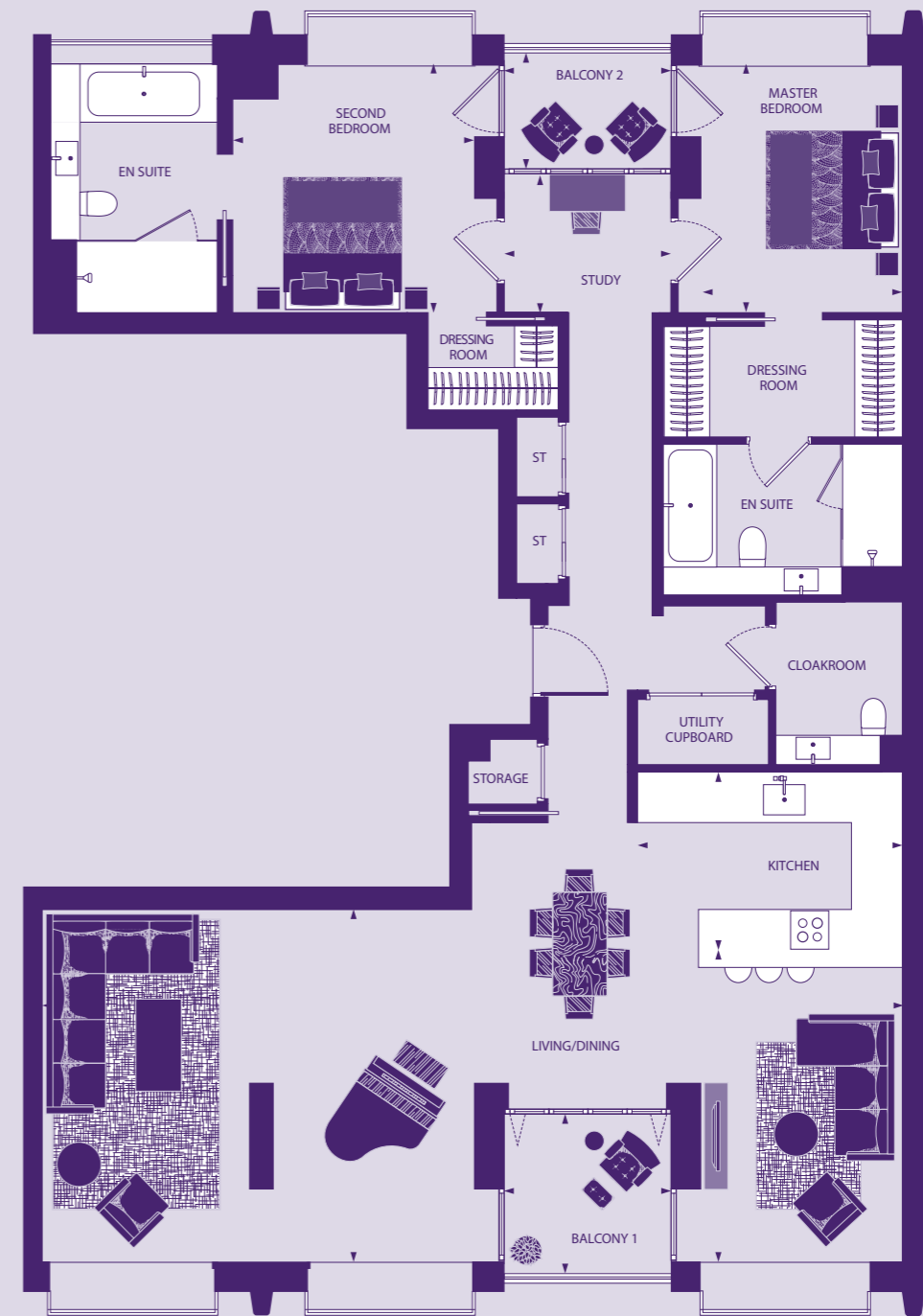
DIMENSIONS

Living/Dining	8585 x 4871mm 28' 2" x 16' 0"
Kitchen	3675 x 2830mm 12' 1" x 9' 3"
Master Bedroom	3365 x 2707mm 11' 0" x 8' 11"
Dressing Room	3337 x 1788mm 10' 11" x 5' 10"
En suite	3226 x 1972mm 10' 7" x 6' 6"
Bedroom 2	3385 x 2707mm 11' 1" x 8' 11"
Study	2215 x 1664mm 7' 3" x 5' 6"
Shower Room	2473 x 2252mm 8' 1" x 7' 5"
Total	108.04 sq m 1163 sq ft
Balcony 1 Apt. 65, 105	2400 x 2309mm 7' 10" x 7' 7"
Balcony 2 Apt. 65, 105	2400 x 1869mm 7' 10" x 6' 2"
Balcony 1 Apt. 85	2400 x 2172mm 7' 10" x 7' 2"
Balcony 2 Apt. 85	2400 x 1732mm 7' 10" x 5' 8"



## TWO BEDROOM APARTMENT

APARTMENTS 125, 142



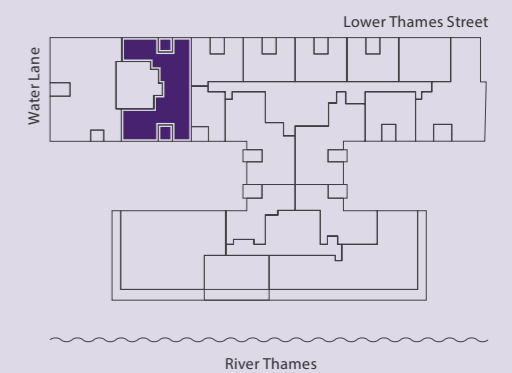
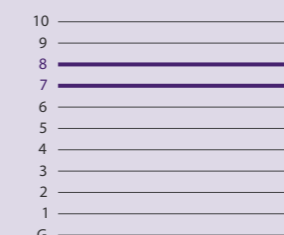
FLOOR

APARTMENT

APARTMENT LOCATION

DIMENSIONS

Living	9077 x 4874mm 29' 9" x 16' 0"
Dining	4292 x 2716mm 14' 1" x 8' 11"
Kitchen	3682 x 2504mm 12' 1" x 8' 3"
Master Bedroom	3365 x 2707mm 11' 0" x 8' 11"
Dressing Room 1	3337 x 1788mm 10' 11" x 5' 10"
En suite 1	3139 x 1848mm 10' 4" x 6' 1"
Bedroom 2	3405 x 3385mm 11' 2" x 11' 1"
Dressing Room 2	1952 x 1393mm 6' 5" x 4' 7"
En suite 2	3364 x 2228mm 11' 0" x 7' 4"
Study	2215 x 1664mm 7' 3" x 5' 6"
Total	134.30 sq m 1446 sq ft
Balcony 1 Apt. 125	2400 x 2172mm 7' 10" x 7' 2"
Balcony 2 Apt. 125	2400 x 1732mm 7' 10" x 5' 8"
Balcony 1 Apt. 142	2400 x 2309mm 7' 10" x 7' 7"
Balcony 2 Apt. 142	2400 x 1869mm 7' 10" x 6' 2"

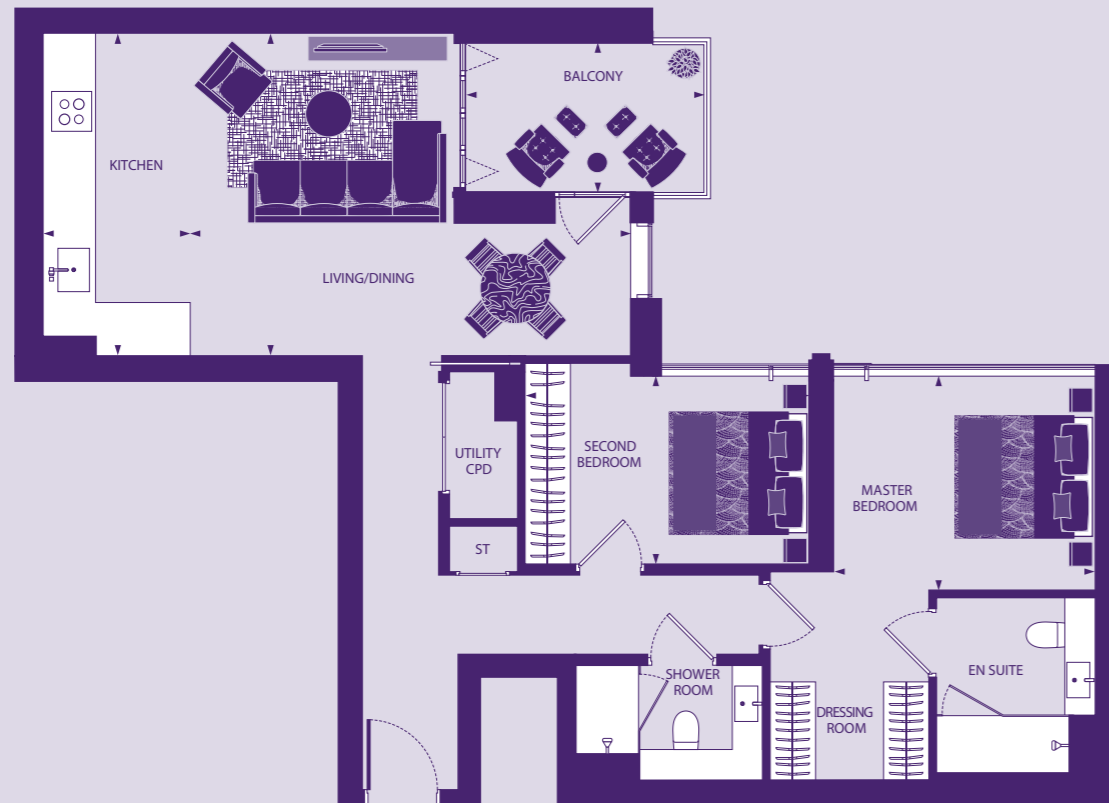


50  
|  
51



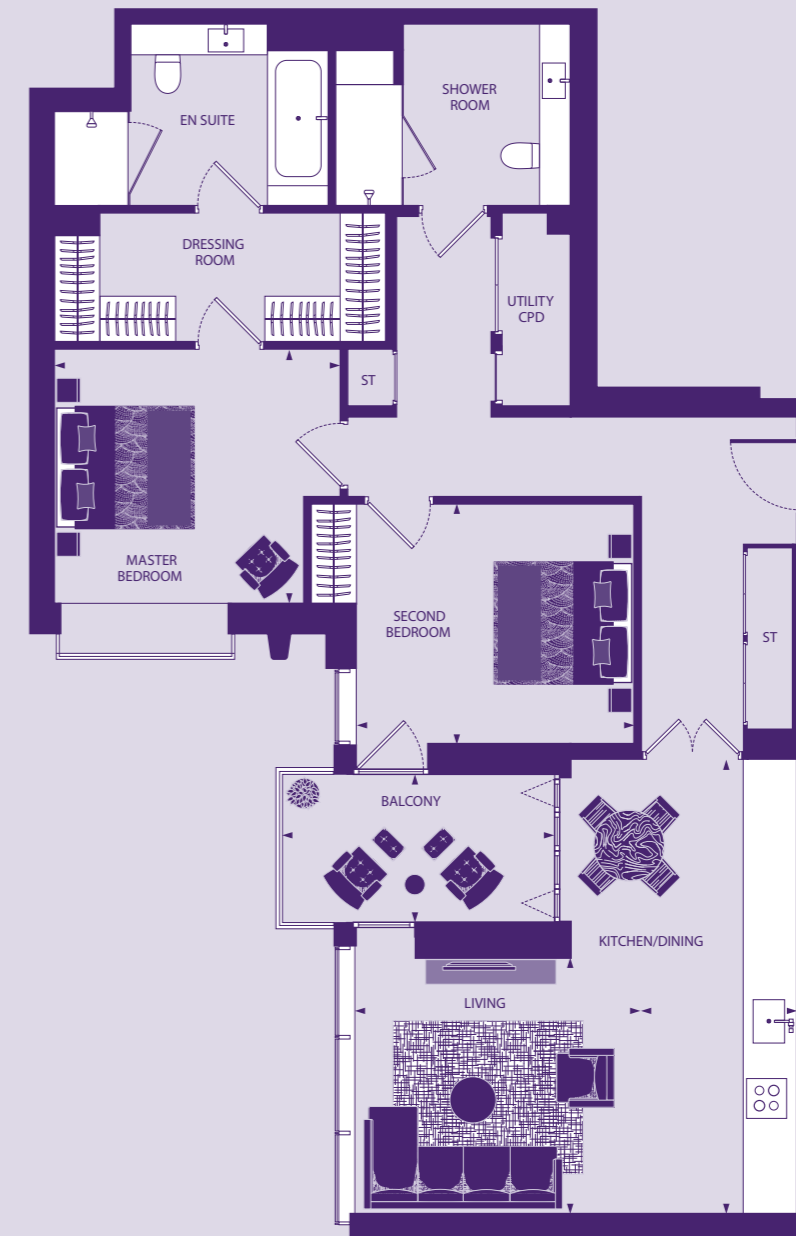
## TWO BEDROOM APARTMENT

APARTMENT 134



## TWO BEDROOM APARTMENT

APARTMENT 153



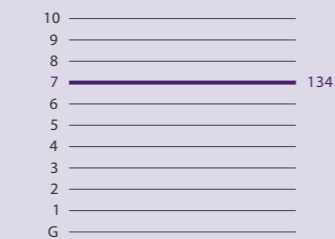
52  
|  
53



### DIMENSIONS

Living/Dining	5866 x 4342mm 19' 3" x 14' 3"
Kitchen	4342 x 1945mm 14' 3" x 6' 5"
Master Bedroom	3413 x 2782mm 11' 2" x 9' 2"
Dressing Room	2000 x 1308mm 6' 7" x 4' 3"
En suite	2397 x 2251mm 7' 10" x 7' 5"
Bedroom 2	3717 x 2338mm 12' 2" x 7' 8"
Shower Room	2398 x 1812mm 7' 10" x 5' 11"
Total	79.32 sq m 854 sq ft
Balcony	3221 x 1787mm 10' 7" x 5' 10"

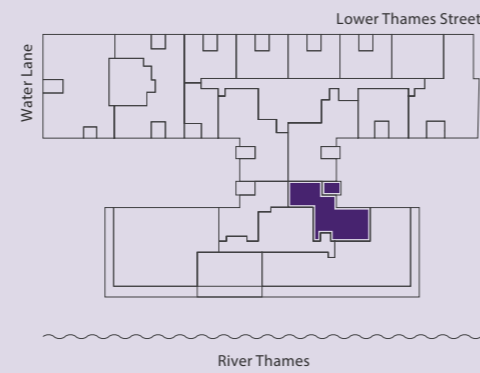
### FLOOR



### APARTMENT

134

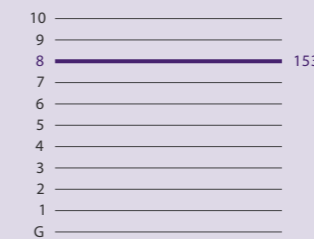
### APARTMENT LOCATION



### DIMENSIONS

Living/Dining	4078 x 3304mm 13' 5" x 10' 10"
Kitchen	5998 x 2050mm 19' 8" x 6' 9"
Master Bedroom	3743 x 3366mm 12' 3" x 11' 1"
En suite	3470 x 2424mm 11' 5" x 7' 11"
Bedroom 2	3913 x 3214mm 12' 10" x 10' 7"
Shower Room	3212 x 2425mm 10' 6" x 7' 11"
MEP	2571 x 725mm 8' 5" x 2' 5"
Total	100.15 sq m 1078 sq ft
Balcony	3659 x 1837mm 12' 0" x 6' 0"

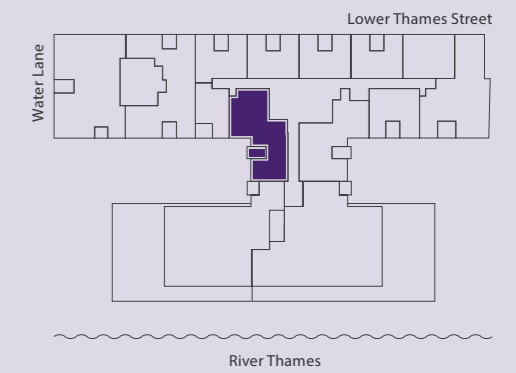
### FLOOR



### APARTMENT

153

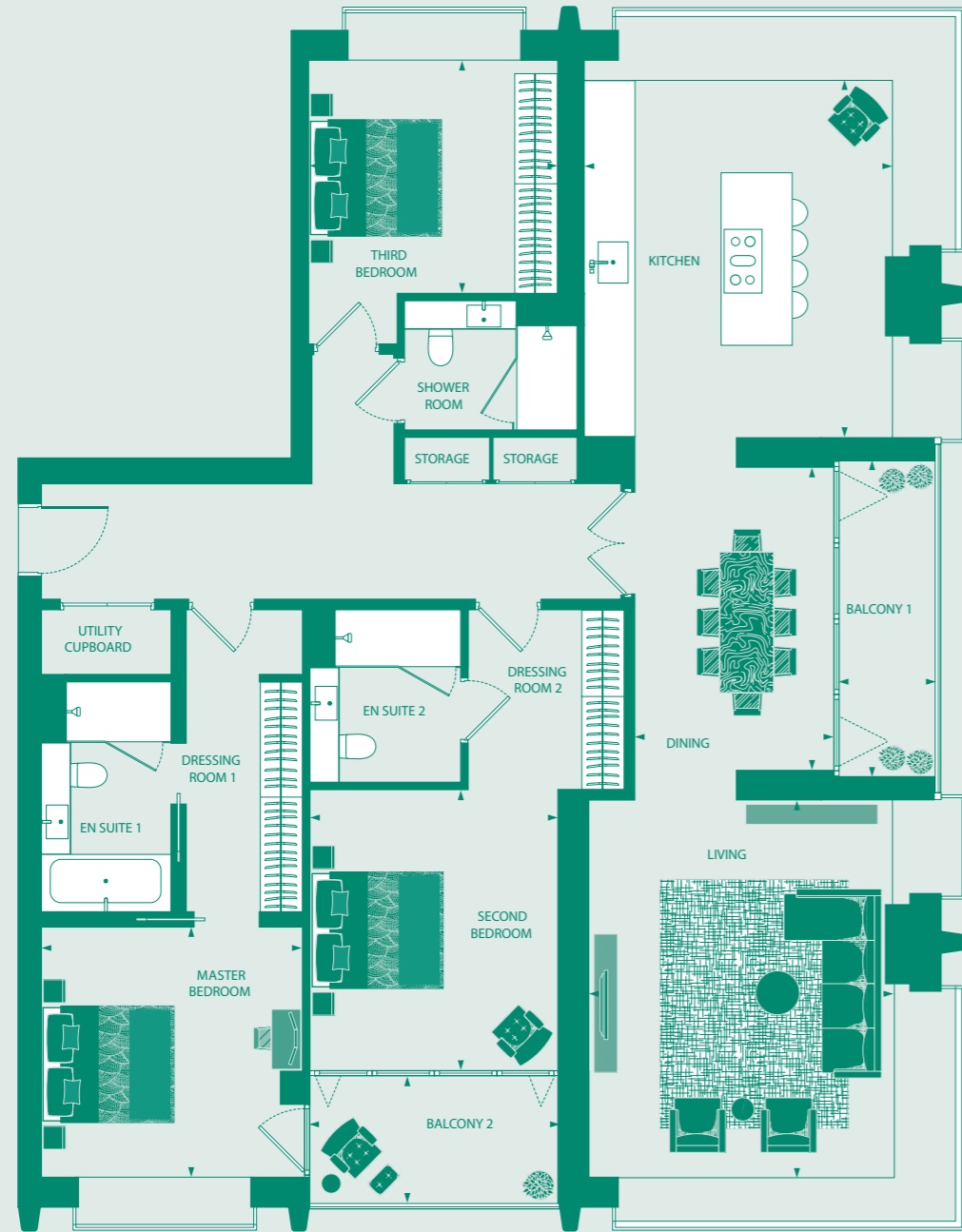
### APARTMENT LOCATION



THREE BEDROOM  
APARTMENTS

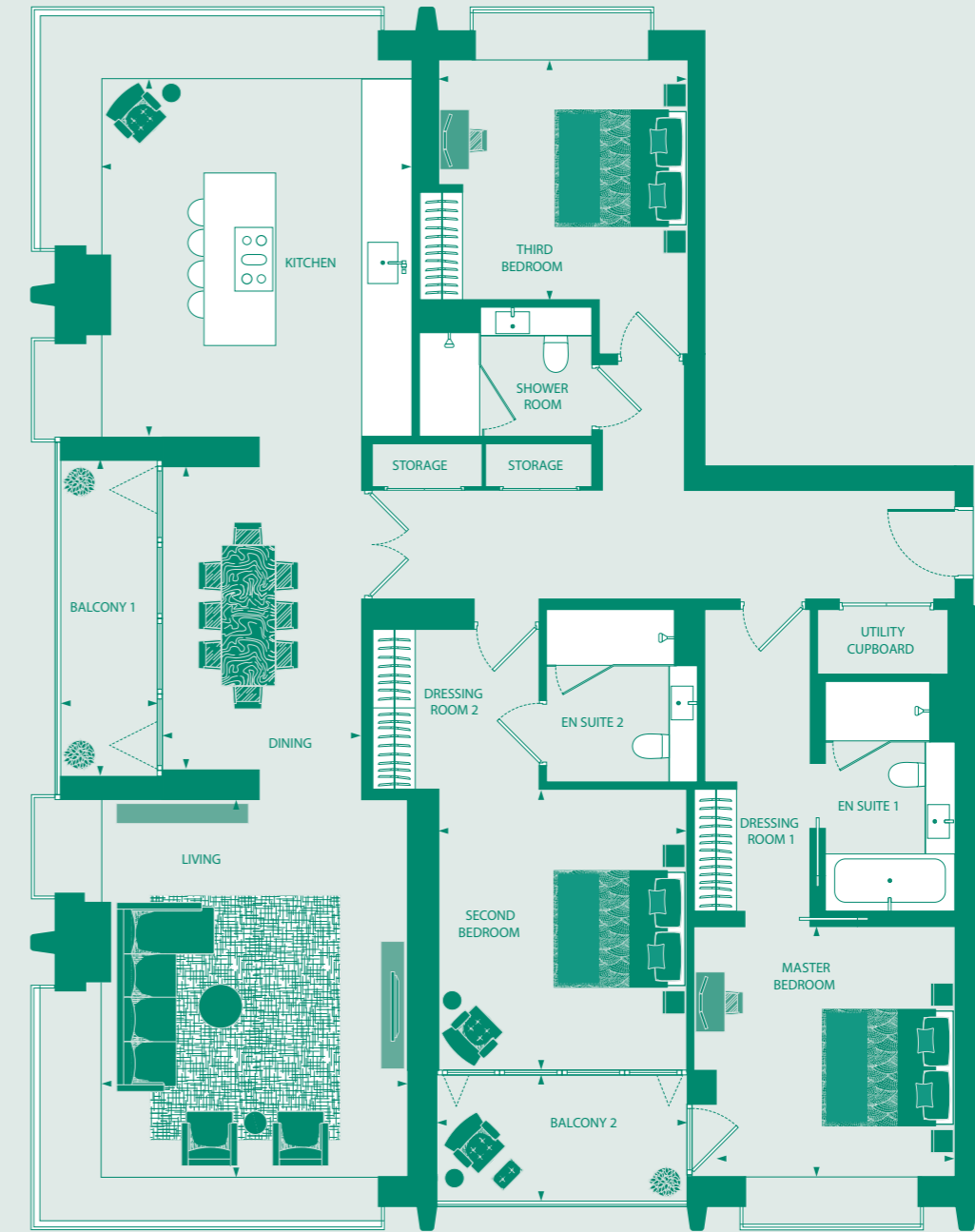
## THREE BEDROOM APARTMENT

APARTMENTS 12, 33, 54, 75, 95, 115



## THREE BEDROOM APARTMENT

APARTMENTS 15, 36, 57, 78, 98, 118



56  
|  
57



### DIMENSIONS

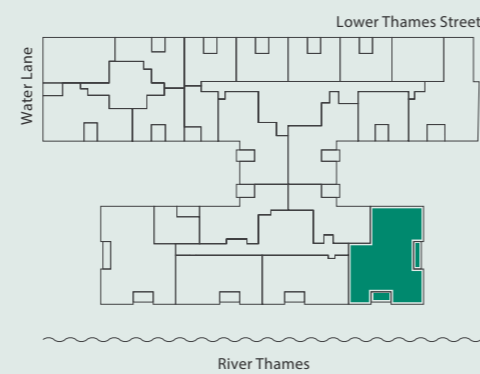
Living	5222 x 4105mm	17' 2" x 13' 6"
Dining	4215 x 2740mm	13' 10" x 9' 0"
Kitchen	5158 x 4278mm	16' 11" x 14' 0"
Master Bedroom	3456 x 3390mm	11' 4" x 11' 1"
Bedroom 2	3861 x 3407mm	12' 8" x 11' 2"
Bedroom 3	3407 x 3170mm	11' 2" x 10' 5"
<b>Total</b>		
Apartment 12	151.92sq m	1,635 sq ft
Apartments 33, 54, 75, 95, 115	152.09sq m	1,637 sq ft
Balcony 1	4230 x 1145mm	13' 11" x 3' 9"
Balcony 2	3518 x 1688mm	11' 6" x 5' 6"

### FLOOR



### APARTMENT

### APARTMENT LOCATION



### DIMENSIONS

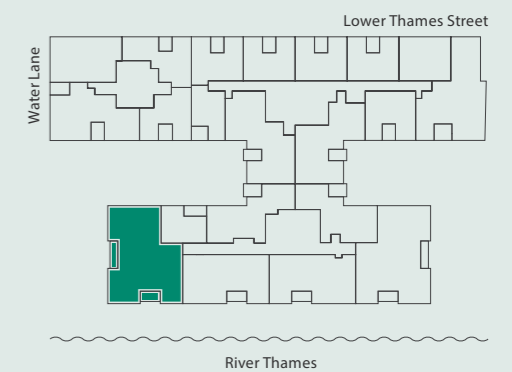
Living	5191 x 4150mm	17' 0" x 13' 7"
Dining	4284 x 2787mm	14' 1" x 9' 2"
Kitchen	5219 x 4149mm	17' 1" x 13' 7"
Master Bedroom	3637 x 3440mm	11' 11" x 11' 3"
Bedroom 2	3950 x 3352mm	13' 0" x 11' 0"
Bedroom 3	3412 x 3216mm	11' 2" x 10' 7"
<b>Total</b>		
Apartment 15	151.95sq m	1,636 sq ft
Apartments 36, 57, 78, 98, 118	152.11 sq m	1,637 sq ft
Balcony 1	4230 x 1145mm	13' 11" x 3' 9"
Balcony 2	3517 x 1688mm	11' 6" x 5' 6"

### FLOOR



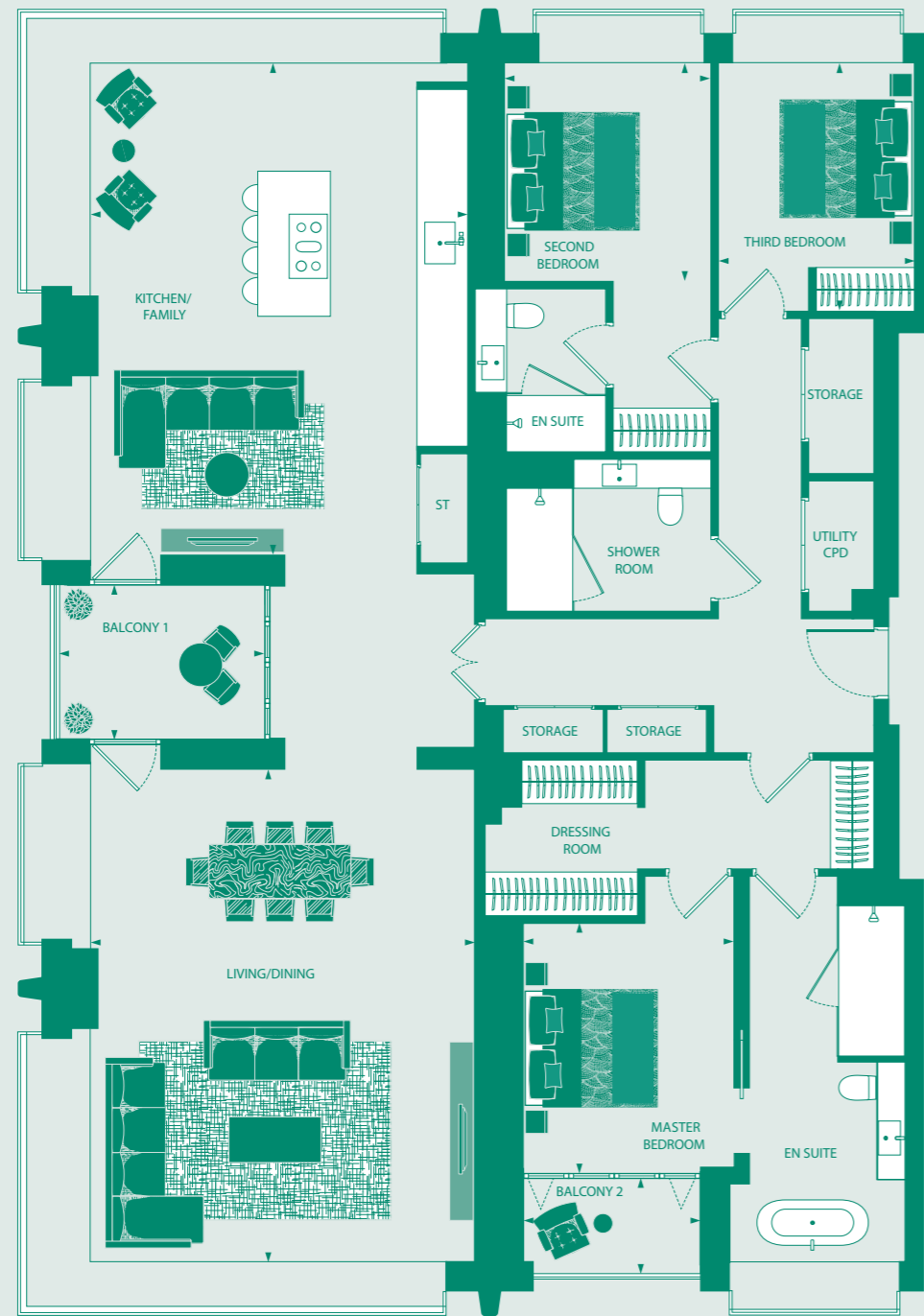
### APARTMENT

### APARTMENT LOCATION



# THREE BEDROOM APARTMENT

APARTMENTS 124, 141



58  
|  
59

## DIMENSIONS

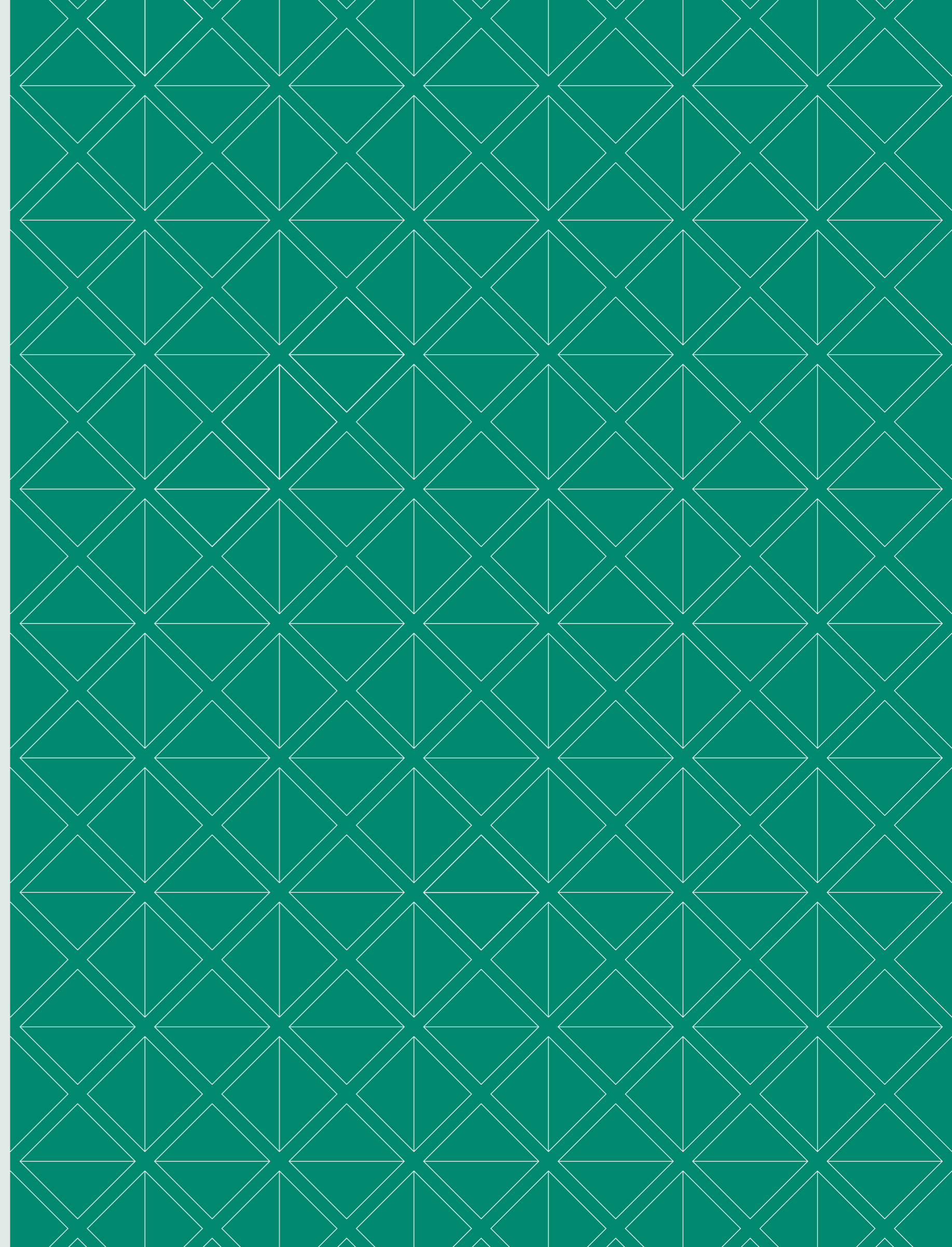
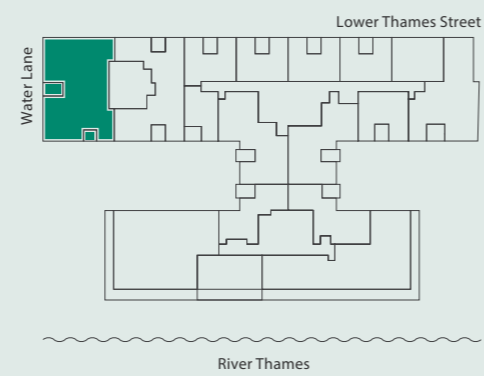
Living/Dining	6708 x 5242mm 22' 0" x 17' 2"
Kitchen/Family	6728 x 5126mm 22' 1" x 16' 10"
Master Bedroom	5699 x 3389mm 18' 8" x 11' 1"
Bedroom 2	2906 x 2762mm 9' 6" x 9' 1"
Bedroom 3	3397 x 2743mm 11' 2" x 9' 0"
Total	171.61 sq m 1,847 sq ft
Balcony 1	2813 x 2230mm 9' 3" x 7' 4"
Balcony 2	2307 x 1278mm 7' 7" x 4' 2"
Apartment 124	
Balcony 1	2954 x 2230mm 9' 8" x 7' 4"
Balcony 2	2307 x 1415mm 7' 7" x 4' 8"
Apartment 141	

## FLOOR



## APARTMENT

## APARTMENT LOCATION





MATERIALS &  
SPECIFICATION



All residences at Landmark Place come with a choice of two colour palettes.\* If you want to further enhance the light and space of your home then the selection of a lighter palette may be your preference. If you prefer richer and more contrasting colours then the carefully selected dark palette will beautifully complement the interior architecture.

**KITCHEN SPECIFICATION,  
ONE BEDROOM SUITES**

- ◆ Individually designed handleless furniture
- ◆ Composite stone worktops
- ◆ Mirrored glass wall panelling
- ◆ Stainless steel undermounted sink with mixer tap and sprayer
- ◆ LED diffused lighting to underside of high wall units
- ◆ Combination microwave oven
- ◆ Warming drawer
- ◆ Flush-mounted touch-control induction hob
- ◆ Fully integrated extractor hood
- ◆ Fully integrated fridge with freezer compartment
- ◆ Fully integrated dishwasher
- ◆ Slimline wine cabinet
- ◆ Porcelain tiled flooring

\*Subject to stage of construction

**KITCHEN SPECIFICATION,  
ONE, TWO AND THREE  
BEDROOM APARTMENTS**

- ◆ Individually designed handleless furniture
- ◆ Composite stone worktops
- ◆ Marble worktop to feature island or peninsula (subject to layout)
- ◆ Mirrored glass wall panelling
- ◆ Stainless steel undermounted sink with mixer tap and sprayer
- ◆ LED diffused lighting to underside of high wall units
- ◆ Single oven
- ◆ Combination microwave oven
- ◆ Warming drawer
- ◆ Flush-mounted touch- control induction hob
- ◆ Fully integrated extractor hood or flush ceiling extractor (subject to layout)
- ◆ Fully integrated fridge/freezer
- ◆ Fully integrated dishwasher
- ◆ Wine cabinet
- ◆ Porcelain tiled flooring



COMPUTER GENERATED IMAGE FOR INDICATIVE PURPOSES ONLY

KITCHEN IN DARK COLOUR PALETTE



COMPUTER GENERATED IMAGE FOR INDICATIVE PURPOSES ONLY

KITCHEN IN LIGHT COLOUR PALETTE



**BATHROOM SPECIFICATION**

- ◆ Contemporary white sanitary ware
- ◆ Wall-hung WC pan with concealed cistern and soft-close seat and cover
- ◆ White steel enamelled bath where applicable
- ◆ Individually designed marble vanity bench with illuminated, demisted mirror above incorporating concealed cupboard to side and shaver socket (subject to layout)
- ◆ Feature pendant light (subject to layout)
- ◆ Rainshower ceiling-mounted shower with separate hand-shower and wall-mounted recessed controls
- ◆ Walk-in style shower with contemporary glass enclosure where applicable
- ◆ Polished chrome, thermostatically controlled heated towel rail
- ◆ Polished marble to bath surround where applicable
- ◆ Porcelain tiling to floor and main walls
- ◆ Glass mosaic feature tiling to feature wall
- ◆ Recessed LED downlighters and LED strip lighting



COMPUTER GENERATED IMAGE FOR INDICATIVE PURPOSES ONLY

BATHROOM IN LIGHT COLOUR PALETTE



COMPUTER GENERATED IMAGE FOR INDICATIVE PURPOSES ONLY

BATHROOM IN DARK COLOUR PALETTE



**HEATING AND COOLING**

- ◆ Independent thermostatically controlled underfloor heating to all rooms
- ◆ Independent comfort-cooling to all reception rooms and bedrooms

**GENERAL SPECIFICATION**

- ◆ Porcelain floor tiling to hallways and reception rooms
- ◆ Soft sheen carpet to bedrooms
- ◆ Full-height white lacquer doors
- ◆ Full-height feature doors in a real wood veneer (subject to layout, to selected units only)
- ◆ Full-height panelling to feature walls in a real wood veneer (subject to layout, to selected units only)
- ◆ Individually designed fully fitted wardrobes to all bedrooms in a real wood veneer

**ELECTRICAL SPECIFICATION**

- ◆ Freestanding washer dryer to utility cupboard
- ◆ Whole-house ventilation system
- ◆ Remote control electric roller blinds to bay windows
- ◆ Recessed LED downlighters to all rooms
- ◆ LED strip lighting to feature areas
- ◆ LED lighting to all balconies and terraces
- ◆ Slimline sockets and switchplates throughout
- ◆ Sky+ connectivity (subject to subscription)
- ◆ Virgin Media connectivity (subject to subscription)
- ◆ Provision for connection to Arabsat and Hot Bird
- ◆ Telephone and data points to reception rooms and bedrooms
- ◆ Home automation system including lighting, heating, cooling, blind control and video entry system
- ◆ Mains supply smoke/heat detectors and sprinkler system

**COMMUNAL AREAS**

- ◆ 24-hour concierge service
- ◆ CCTV security system coverage
- ◆ Lifts to all floors
- ◆ Grand entrance foyer with seating area and fireplace
- ◆ Private residents' health suite including 20-metre swimming pool, sauna, steam room, treatment room and gymnasium
- ◆ Private residents' cinema room and lounge area
- ◆ Private residents' business suite
- ◆ Underground parking available to selected units†
- ◆ Electric car charging points available
- ◆ Underground cycle storage facilities
- ◆ Underground storage units available to selected units†

† Limited availability, at additional cost



COMPUTER GENERATED IMAGE FOR INDICATIVE PURPOSES ONLY



68

69

The Consumer Code for Home Builders (“the Code”), which came into effect in April 2010, applies to all Home Builders registered with the UK’s main new Home Warranty Bodies; NHBC, Premier Guarantee and LABC Warranty.

The Code gives protection and rights to purchasers of new Homes. It requires all new Home Buyers to be treated fairly and ensure they are fully informed about their purchase before and after they sign the contract.

The aim of the Code is for all new Home Buyers to:

- be treated fairly,
- know what levels of service to expect,
- be given reliable information about their purchase and their consumer rights before and after they move in, and
- know how to access speedy, low-cost dispute resolution arrangements to deal with complaints about breaches of the Code

The Code reinforces best practice among Home Builders to encourage a consistently high level of information and customer service. It builds on successful efforts already made by the industry to improve consumer satisfaction in recent years.

The Code covers every stage of the home-buying purchase – pre-contract, exchange of contract and during occupation.

As a 5 star housebuilder we are committed to the Consumer Code for Home Builders. For more information on the Consumer Code for Home Builders please visit <http://www.consumercode.co.uk/>

**CONSUMER  
CODE FOR  
HOME BUILDERS**

[www.consumercode.co.uk](http://www.consumercode.co.uk)





**TURYAP**<sup>®</sup>  
UK